

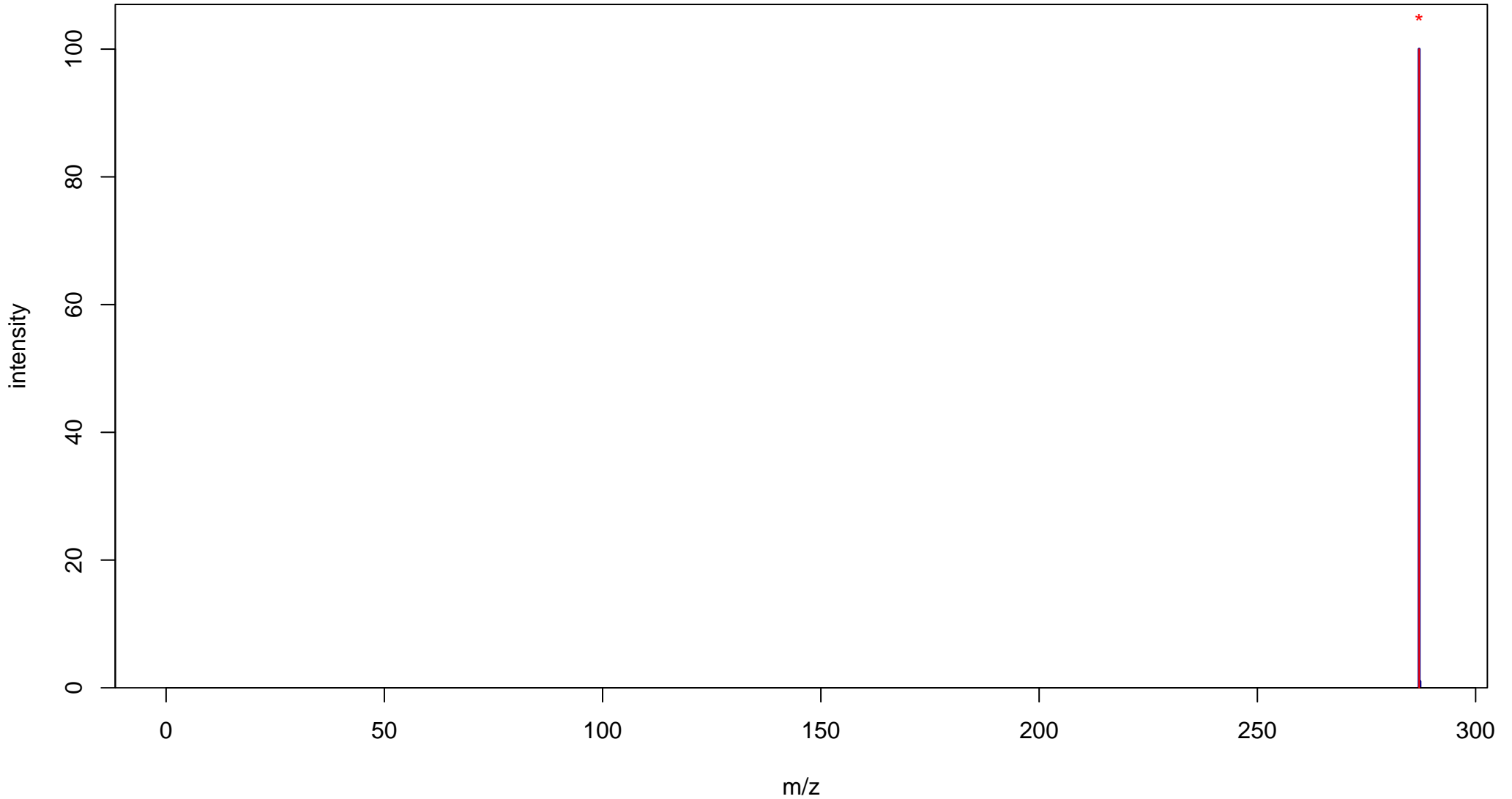
Kaempferol

Mass: 286.0477 Formula: C₁₅H₁₀O₆

mode: + collisionE: 0V

METLIN ID: 3410 SIGMA Prod: K0133

http://metlin.scripps.edu/metabo_info.php?molid=3410



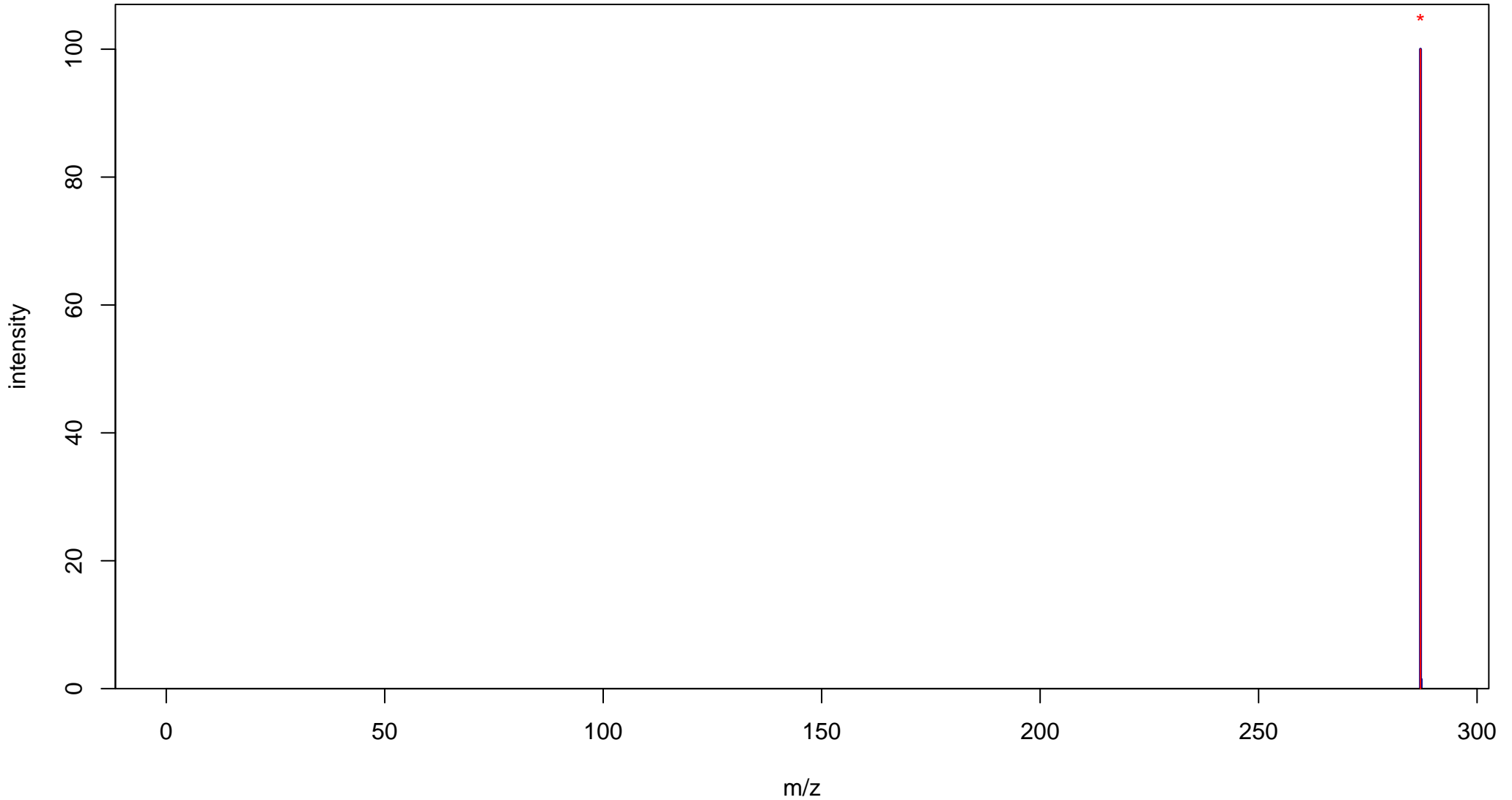
Kaempferol

Mass: 286.0477 Formula: C₁₅H₁₀O₆

mode: + collisionE: 10V

METLIN ID: 3410 SIGMA Prod: K0133

http://metlin.scripps.edu/metabo_info.php?molid=3410



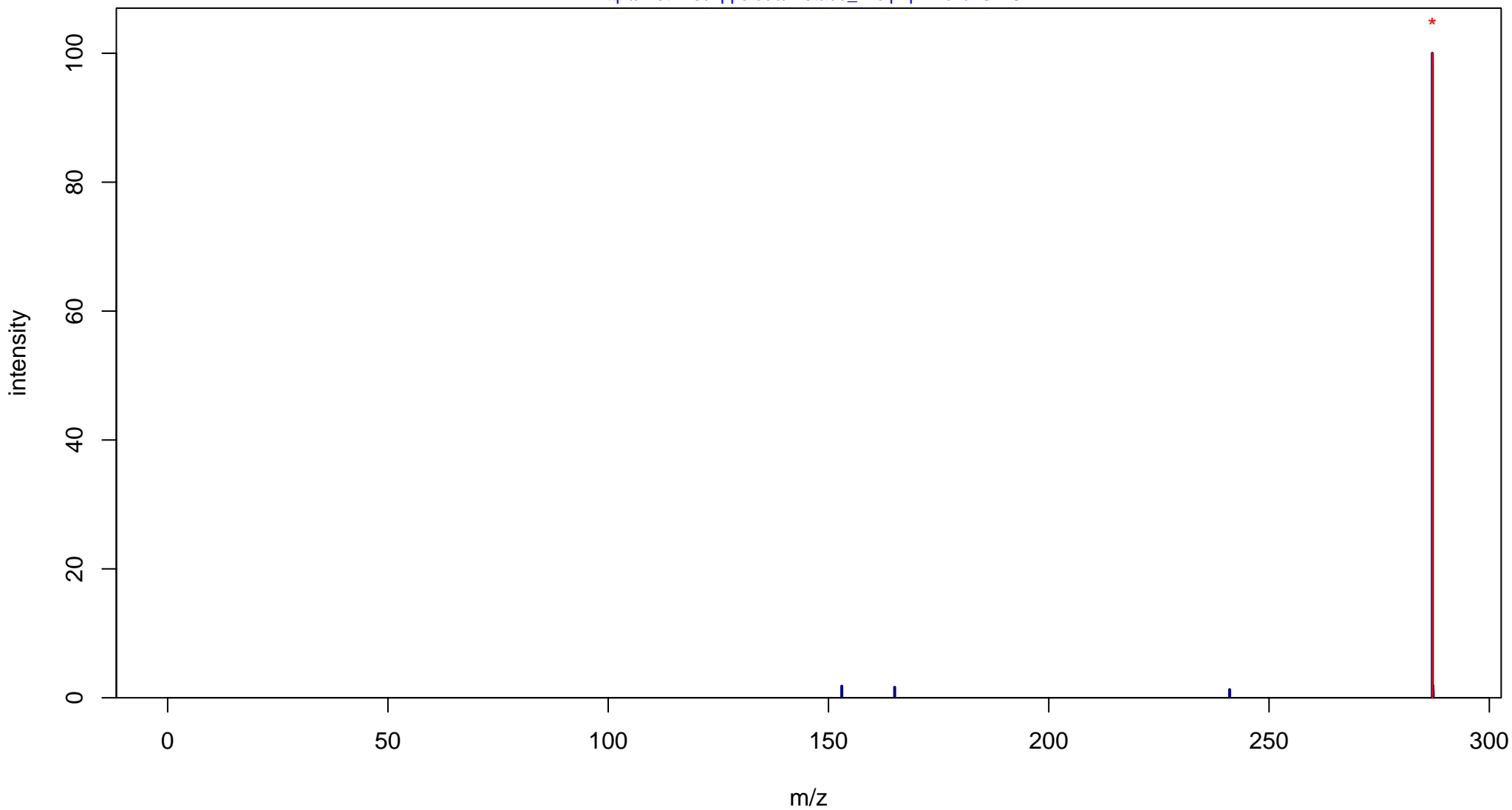
Kaempferol

Mass: 286.0477 Formula: C₁₅H₁₀O₆

mode: + collisionE: 20V

METLIN ID: 3410 SIGMA Prod: K0133

http://metlin.scripps.edu/metabo_info.php?molid=3410



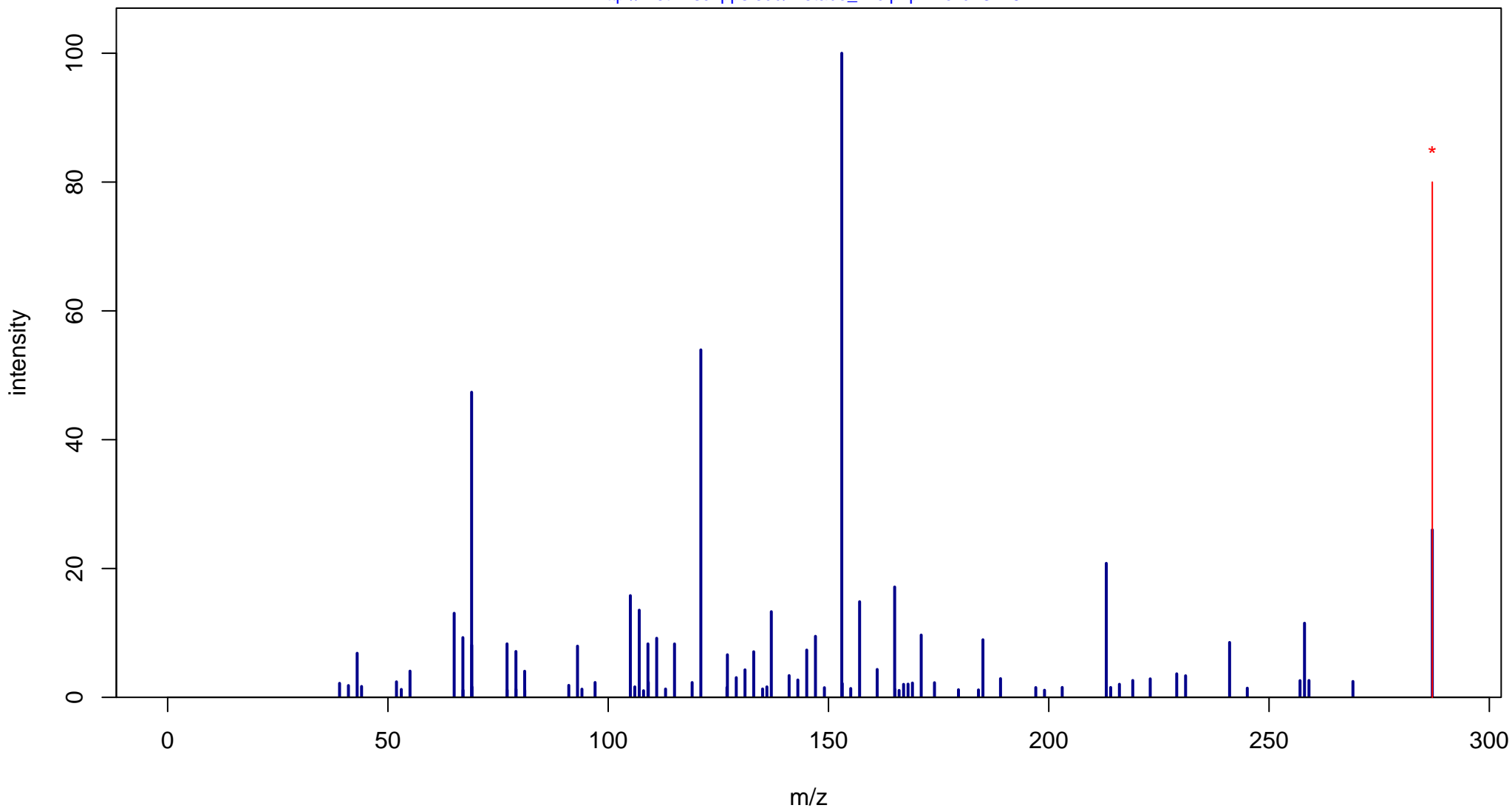
Kaempferol

Mass: 286.0477 Formula: C₁₅H₁₀O₆

mode: + collisionE: 40V

METLIN ID: 3410 SIGMA Prod: K0133

http://metlin.scripps.edu/metabo_info.php?molid=3410



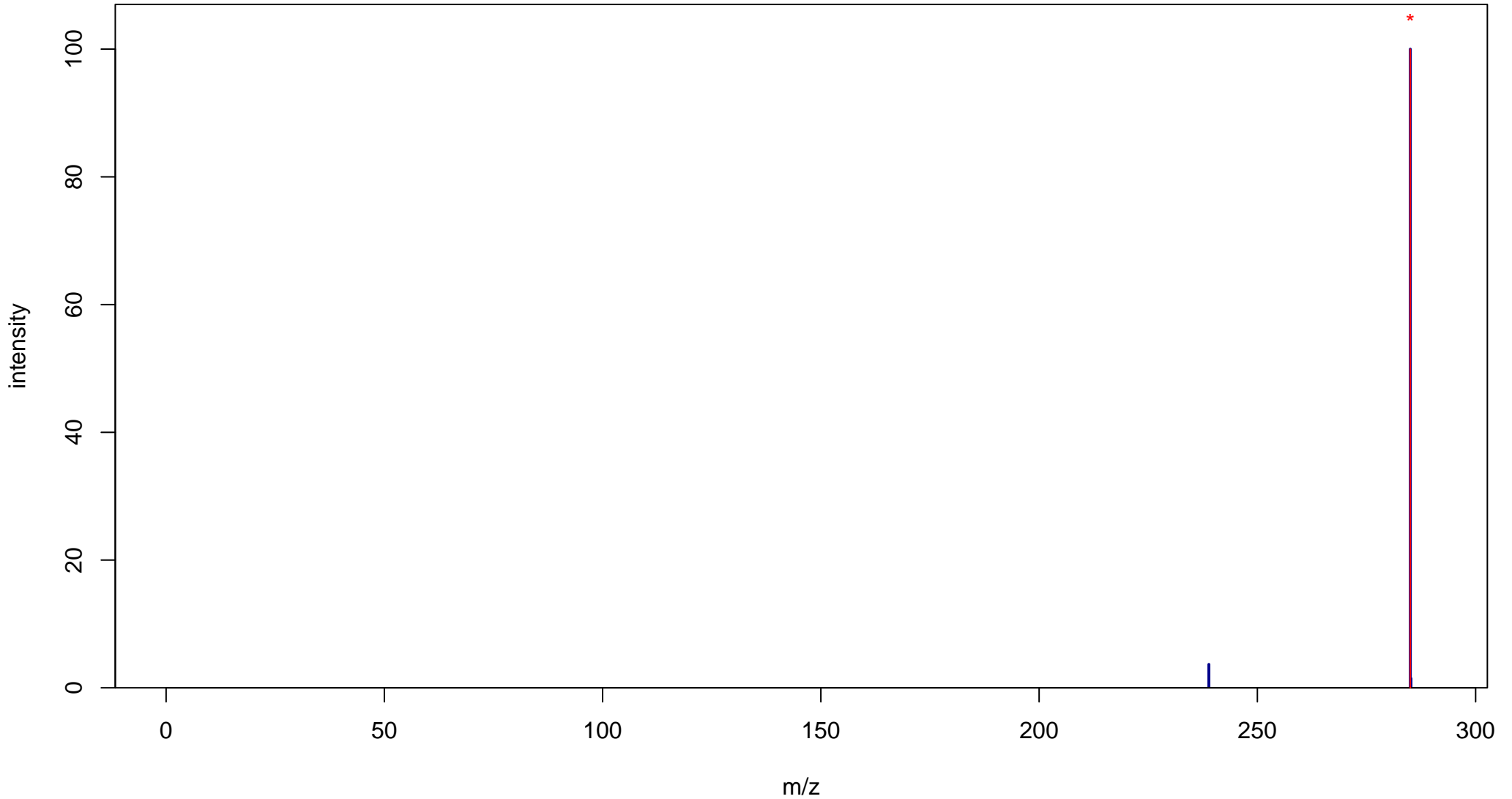
Kaempferol

Mass: 286.0477 Formula: C₁₅H₁₀O₆

mode: - collisionE: 0V

METLIN ID: 3410 SIGMA Prod: K0133

http://metlin.scripps.edu/metabo_info.php?molid=3410



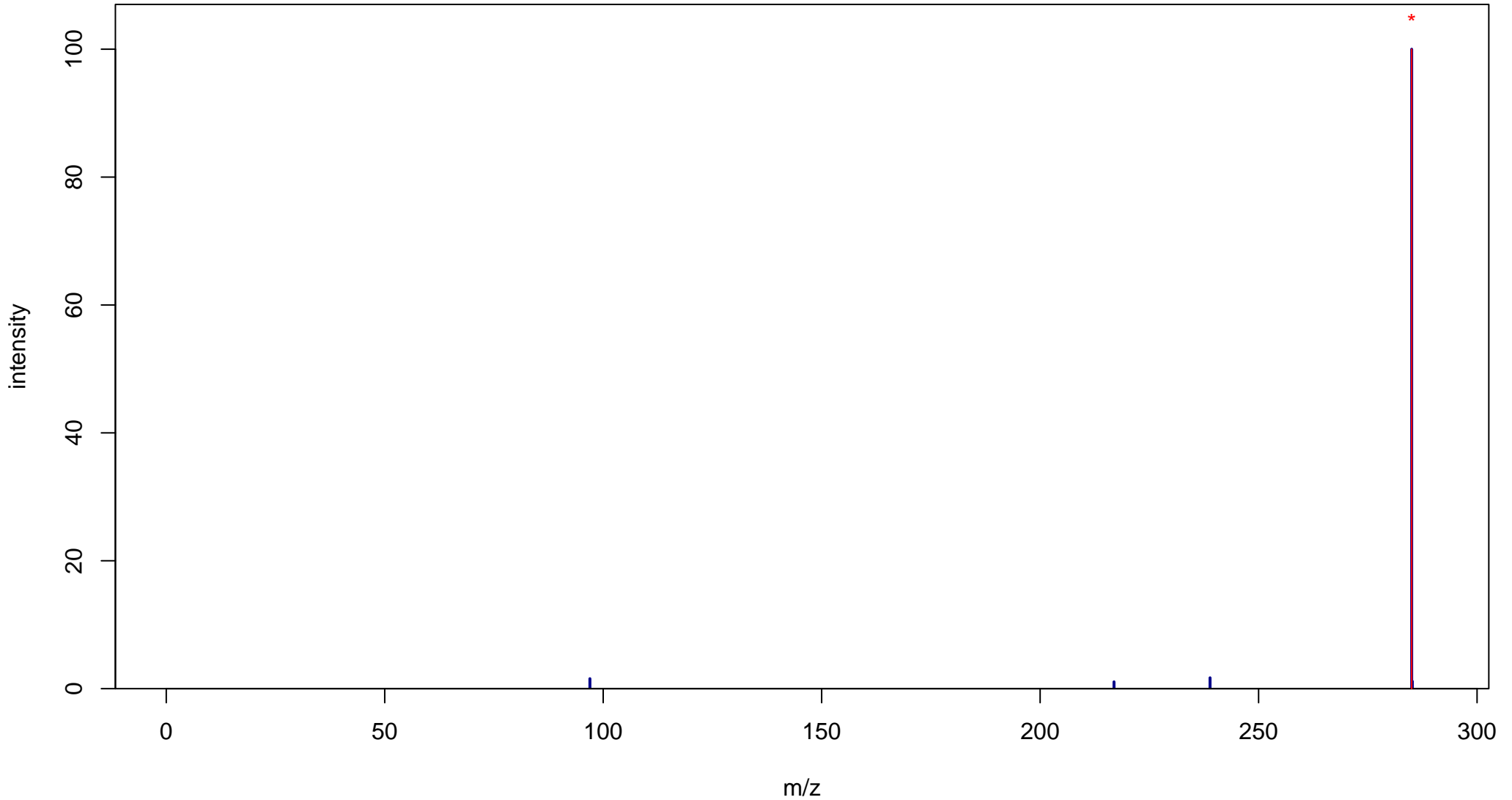
Kaempferol

Mass: 286.0477 Formula: C₁₅H₁₀O₆

mode: - collisionE: 10V

METLIN ID: 3410 SIGMA Prod: K0133

http://metlin.scripps.edu/metabo_info.php?molid=3410



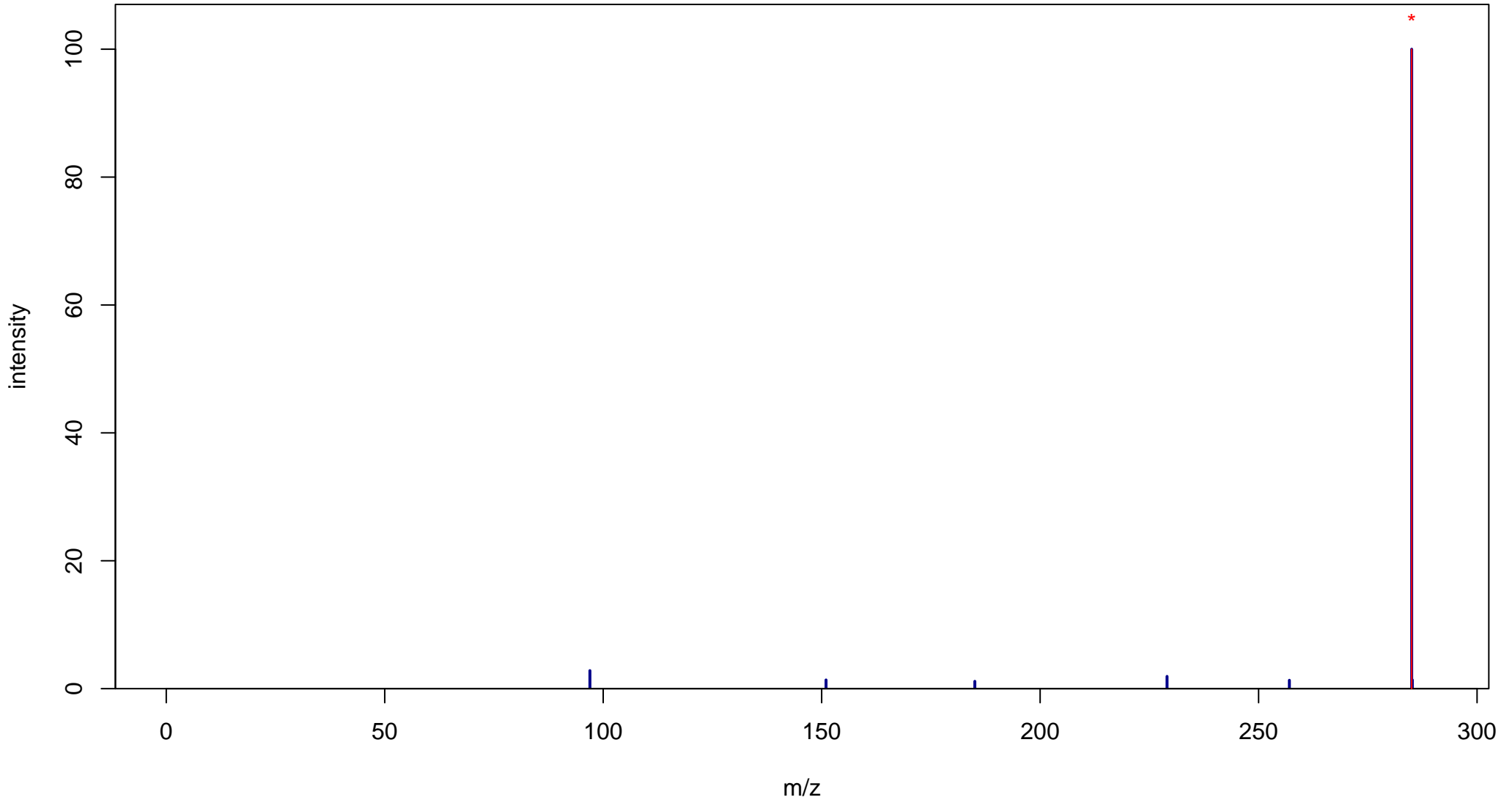
Kaempferol

Mass: 286.0477 Formula: C₁₅H₁₀O₆

mode: - collisionE: 20V

METLIN ID: 3410 SIGMA Prod: K0133

http://metlin.scripps.edu/metabo_info.php?molid=3410



Kaempferol

Mass: 286.0477 Formula: C₁₅H₁₀O₆

mode: - collisionE: 40V

METLIN ID: 3410 SIGMA Prod: K0133

http://metlin.scripps.edu/metabo_info.php?molid=3410

