

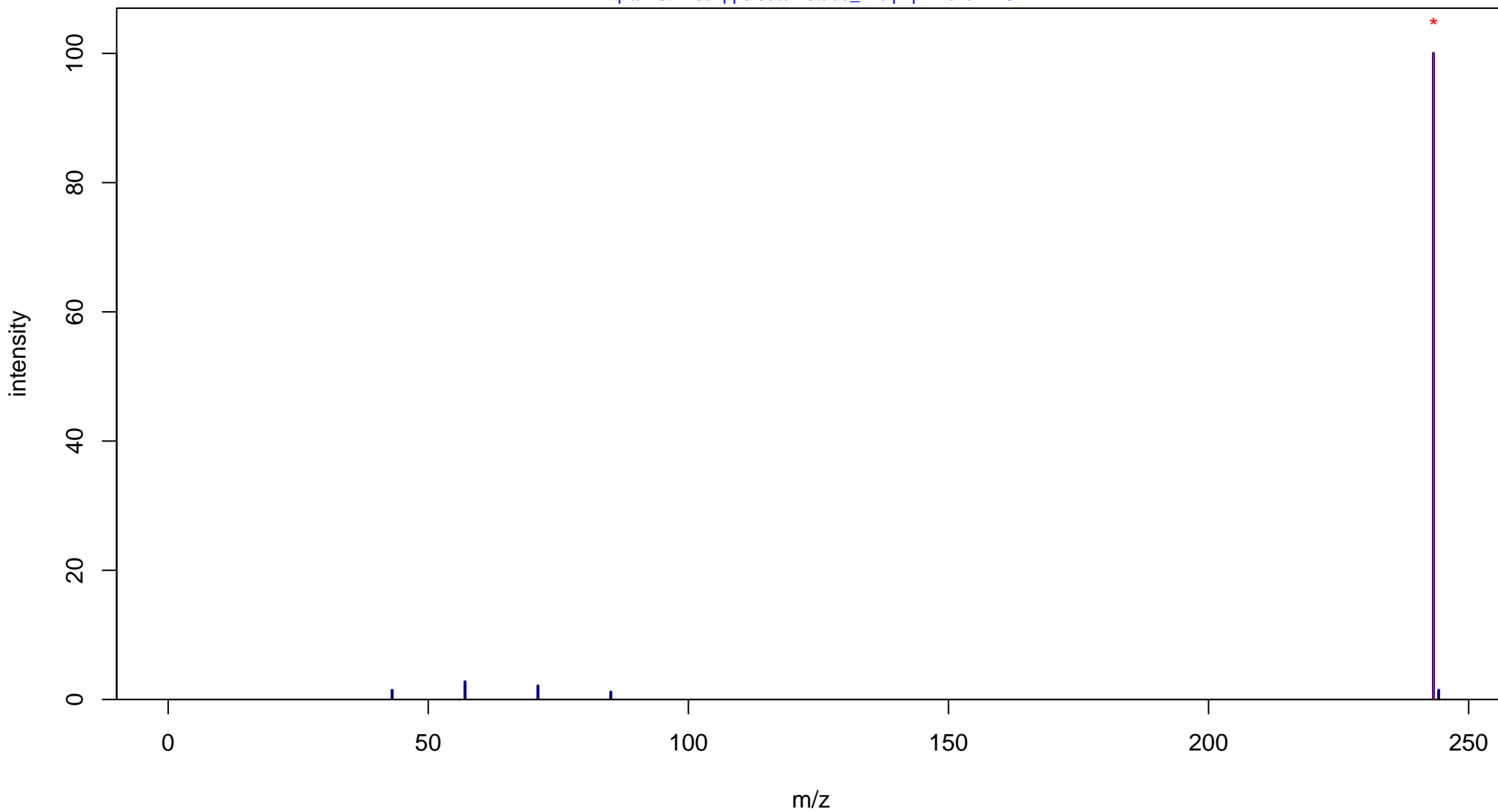
12-Methyltetradecanoic acid

Mass: 242.2246 Formula: C₁₅H₃₀O₂

mode: + collisionE: 0V

METLIN ID: 4287 SIGMA Prod: M3664

http://metlin.scripps.edu/metabo_info.php?molid=4287



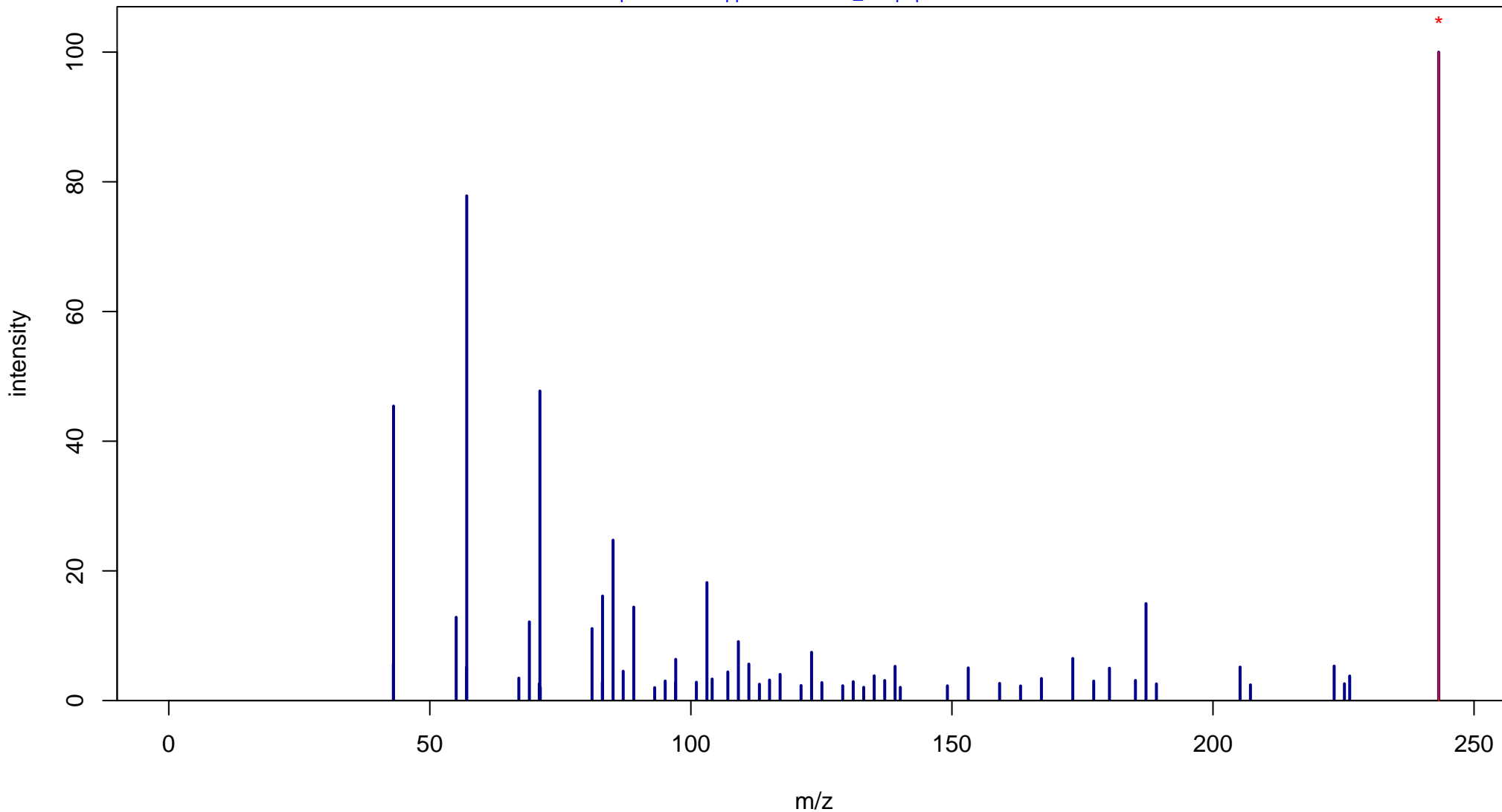
12-Methyltetradecanoic acid

Mass: 242.2246 Formula: C₁₅H₃₀O₂

mode: + collisionE: 10V

METLIN ID: 4287 SIGMA Prod: M3664

http://metlin.scripps.edu/metabo_info.php?molid=4287



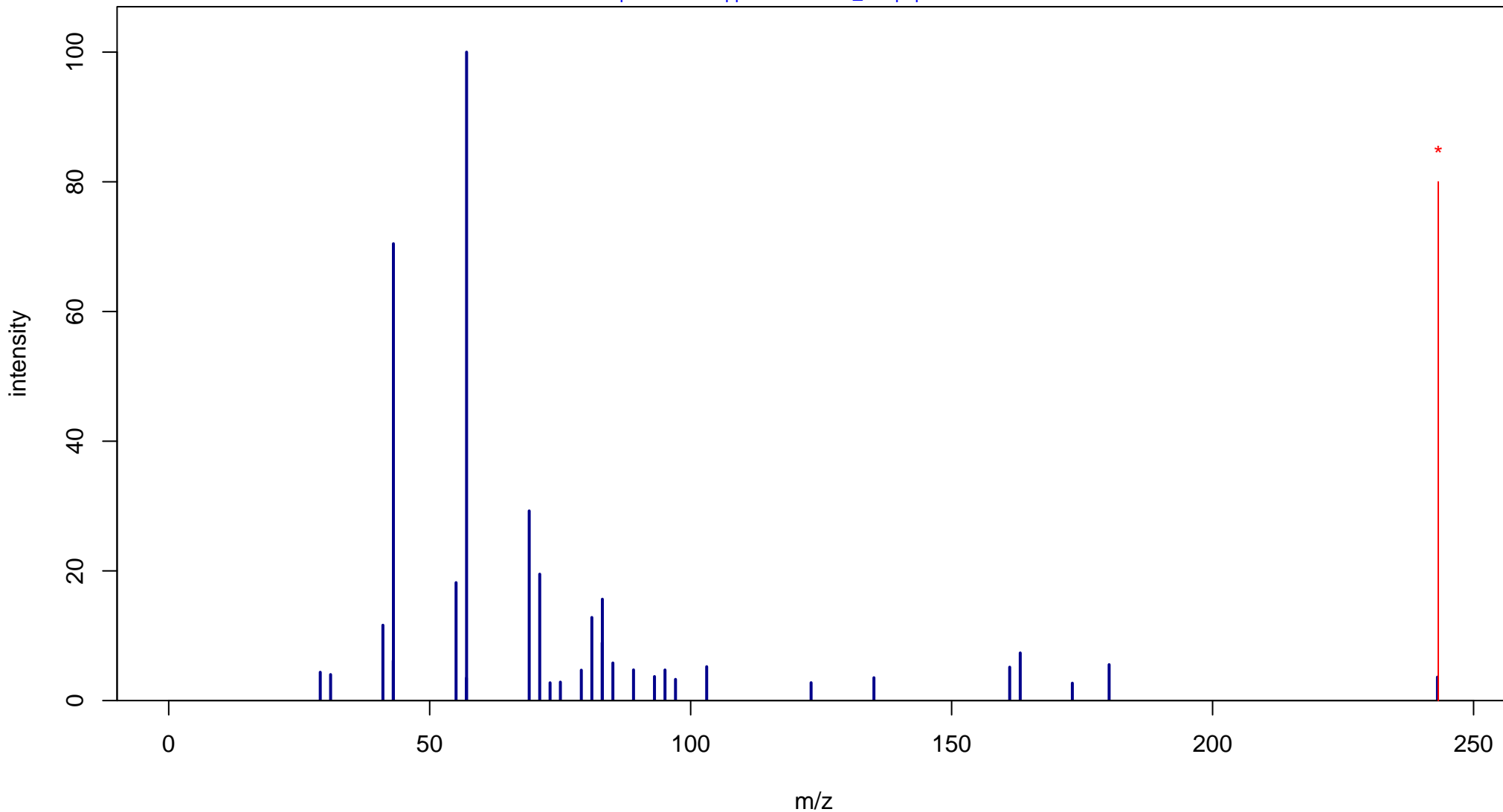
12-Methyltetradecanoic acid

Mass: 242.2246 Formula: C₁₅H₃₀O₂

mode: + collisionE: 20V

METLIN ID: 4287 SIGMA Prod: M3664

http://metlin.scripps.edu/metabo_info.php?molid=4287



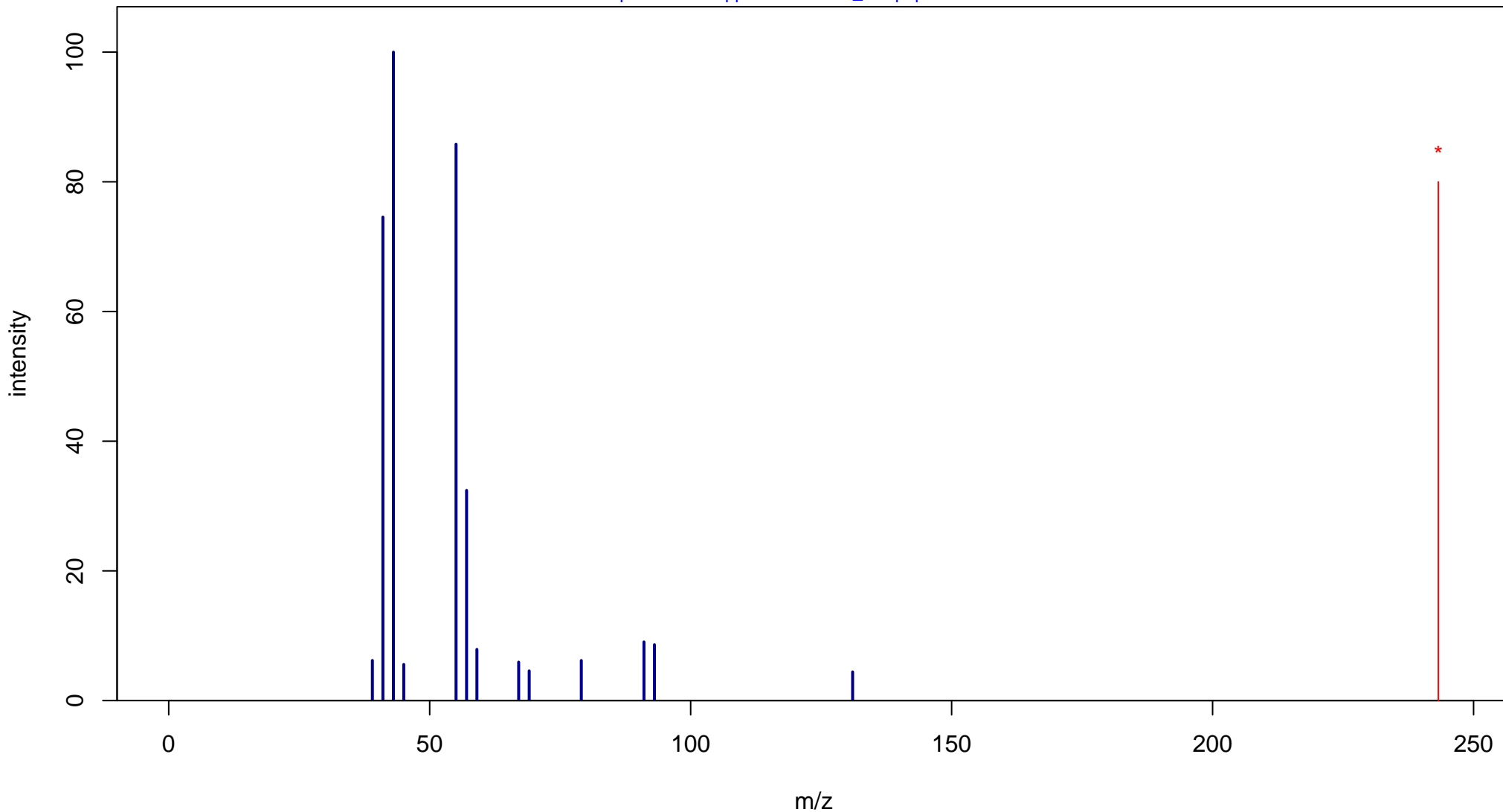
12-Methyltetradecanoic acid

Mass: 242.2246 Formula: C₁₅H₃₀O₂

mode: + collisionE: 40V

METLIN ID: 4287 SIGMA Prod: M3664

http://metlin.scripps.edu/metabo_info.php?molid=4287



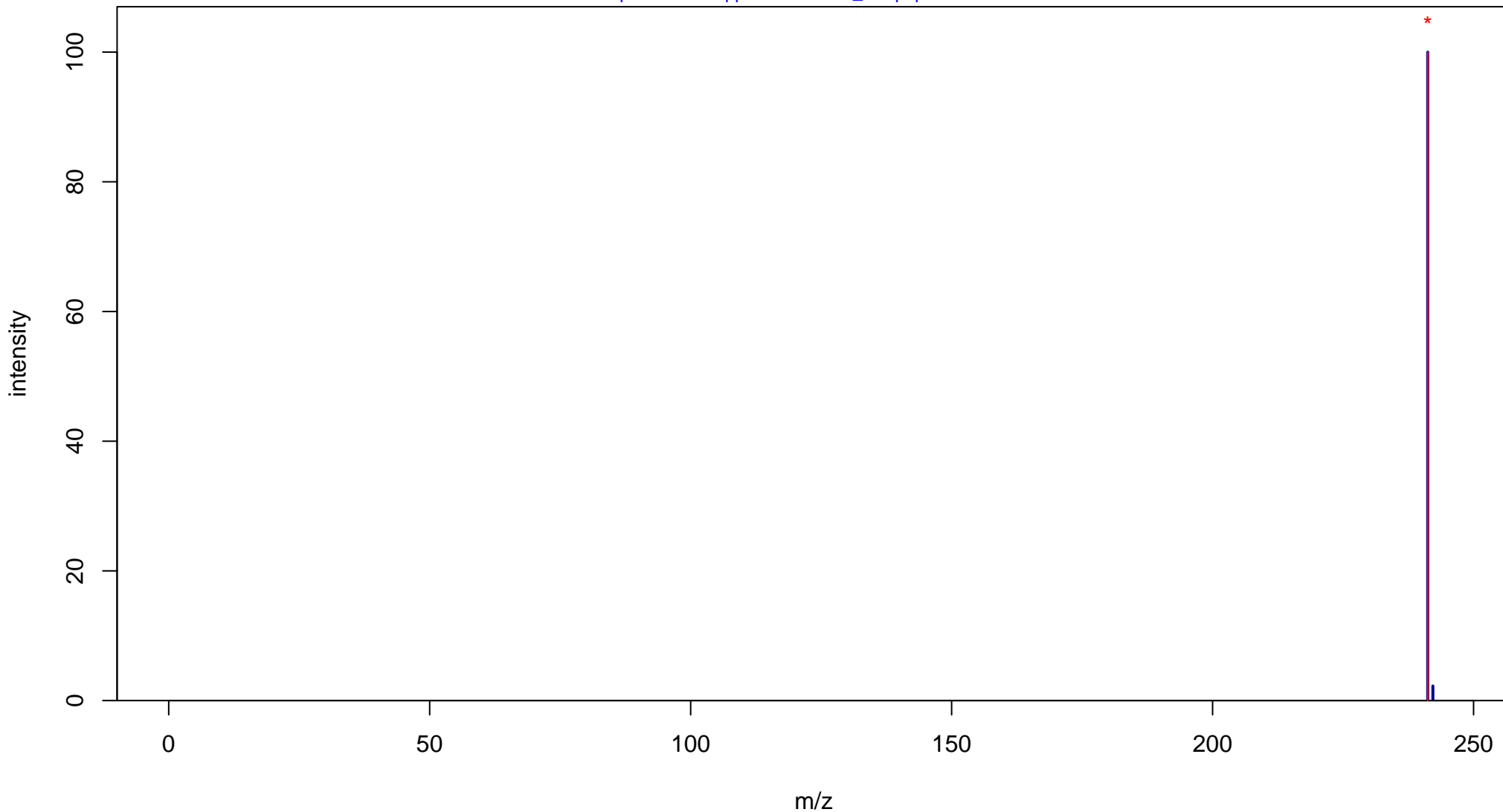
12-Methyltetradecanoic acid

Mass: 242.2246 Formula: C₁₅H₃₀O₂

mode: - collisionE: 0V

METLIN ID: 4287 SIGMA Prod: M3664

http://metlin.scripps.edu/metabo_info.php?molid=4287



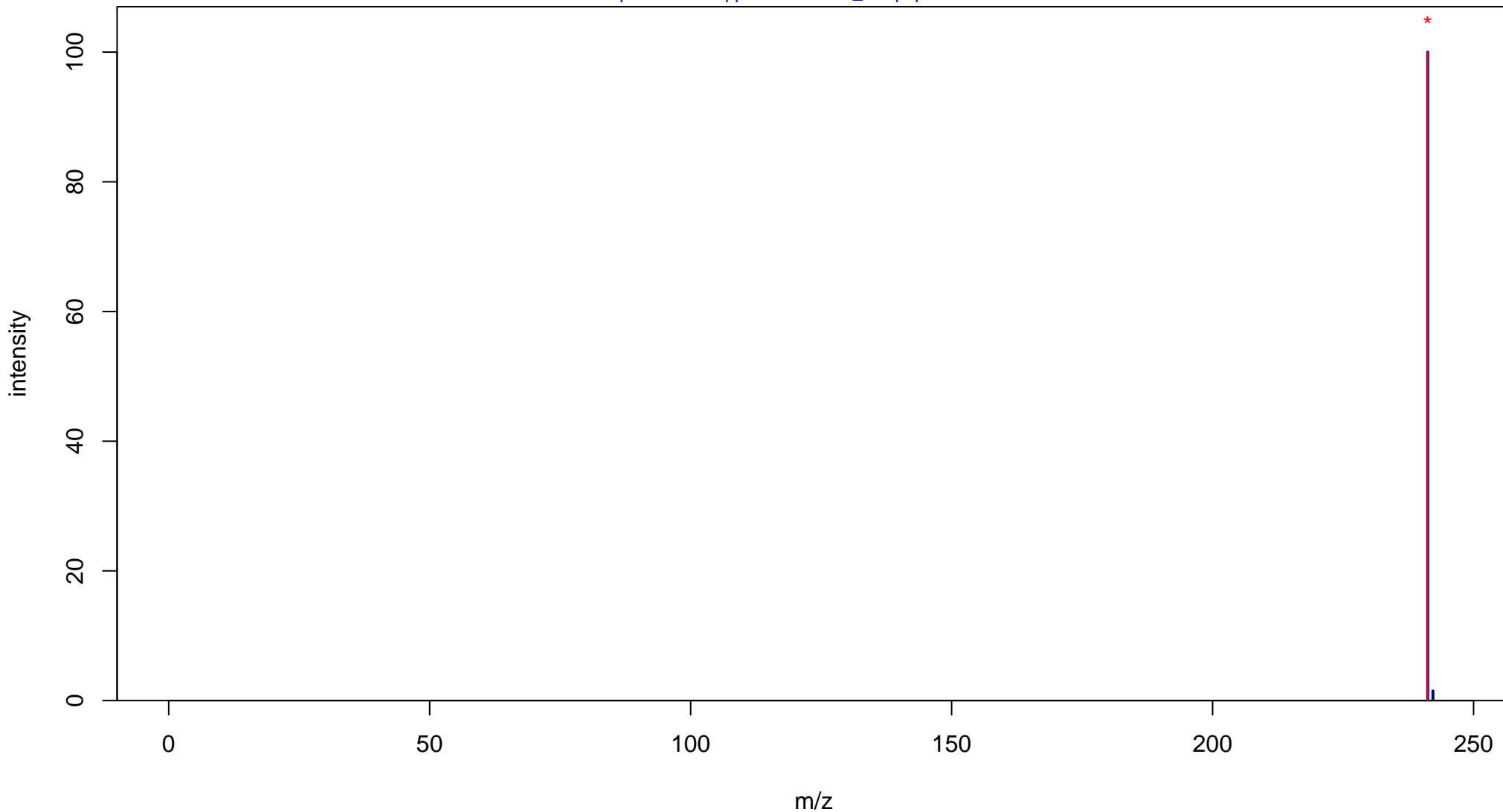
12-Methyltetradecanoic acid

Mass: 242.2246 Formula: C₁₅H₃₀O₂

mode: - collisionE: 10V

METLIN ID: 4287 SIGMA Prod: M3664

http://metlin.scripps.edu/metabo_info.php?molid=4287



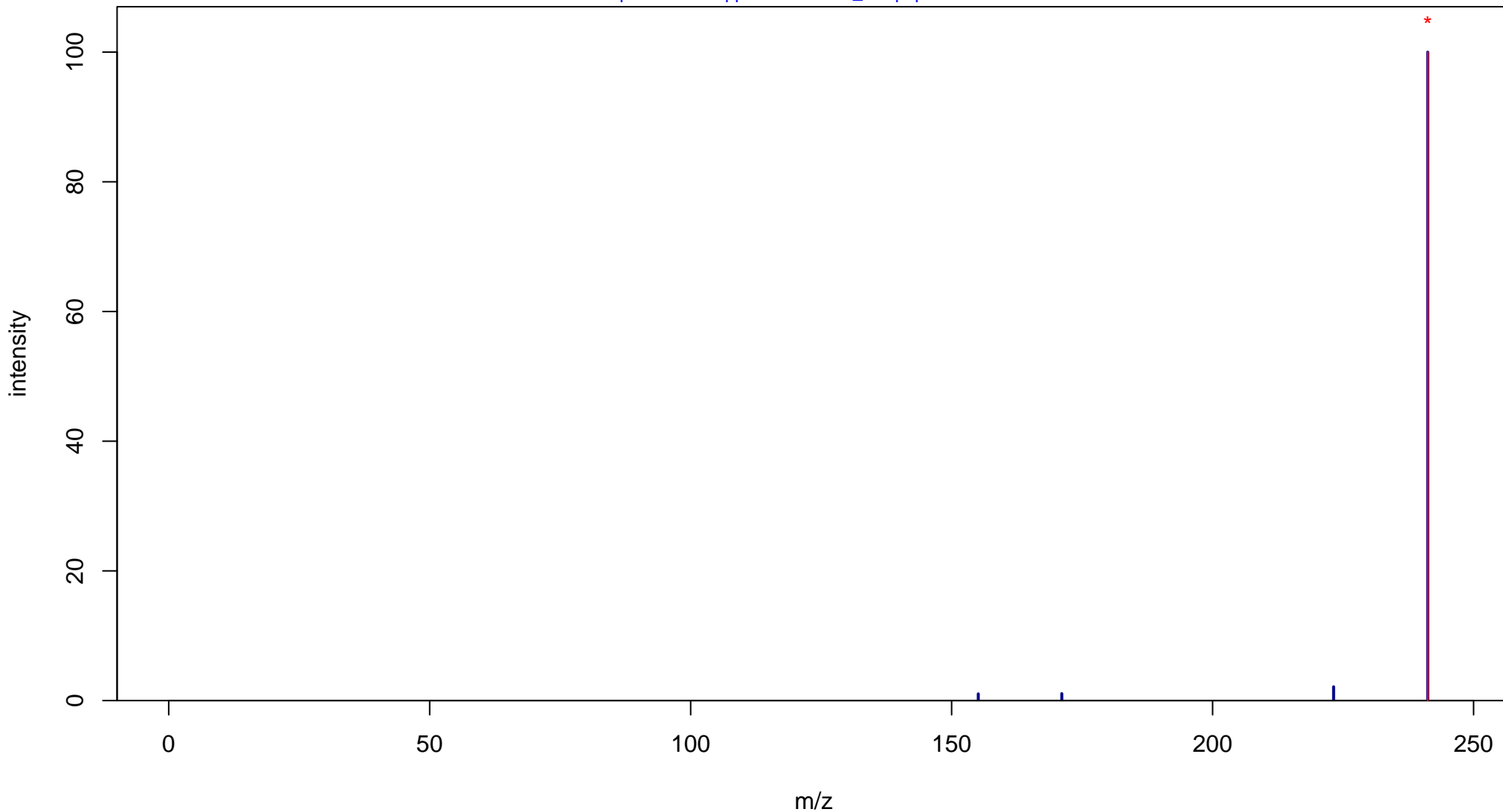
12-Methyltetradecanoic acid

Mass: 242.2246 Formula: C₁₅H₃₀O₂

mode: - collisionE: 20V

METLIN ID: 4287 SIGMA Prod: M3664

http://metlin.scripps.edu/metabo_info.php?molid=4287



12-Methyltetradecanoic acid

Mass: 242.2246 Formula: C₁₅H₃₀O₂

mode: - collisionE: 40V

METLIN ID: 4287 SIGMA Prod: M3664

http://metlin.scripps.edu/metabo_info.php?molid=4287

