

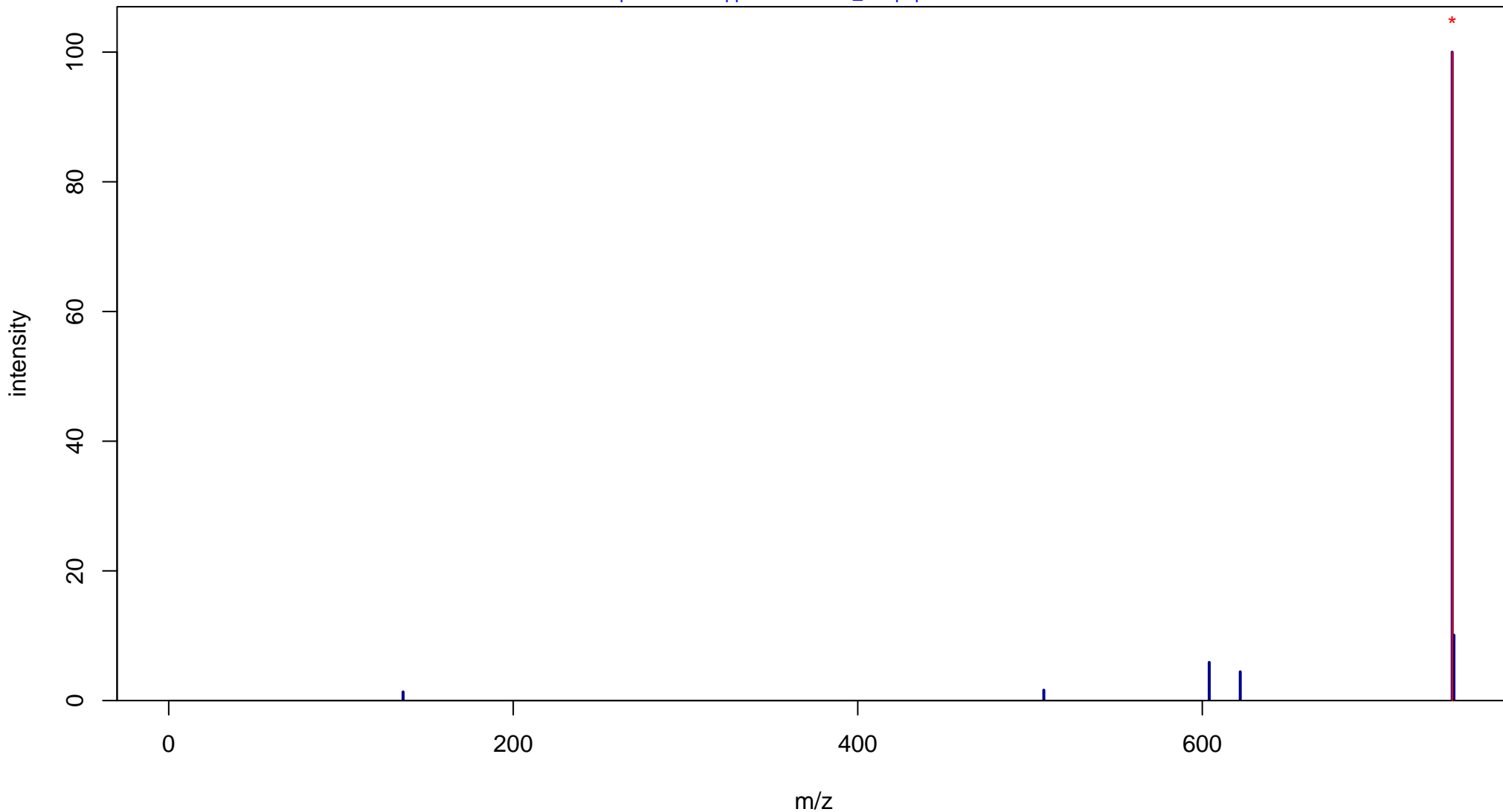
Nicotinic acid adenine dinucleotide phosphate sodium salt

Mass: 744.0595 Formula: C₂₁H₂₇N₆O₁₈P₃

mode: + collisionE: 0V

METLIN ID: 4235 SIGMA Prod: N5655

http://metlin.scripps.edu/metabo_info.php?molid=4235



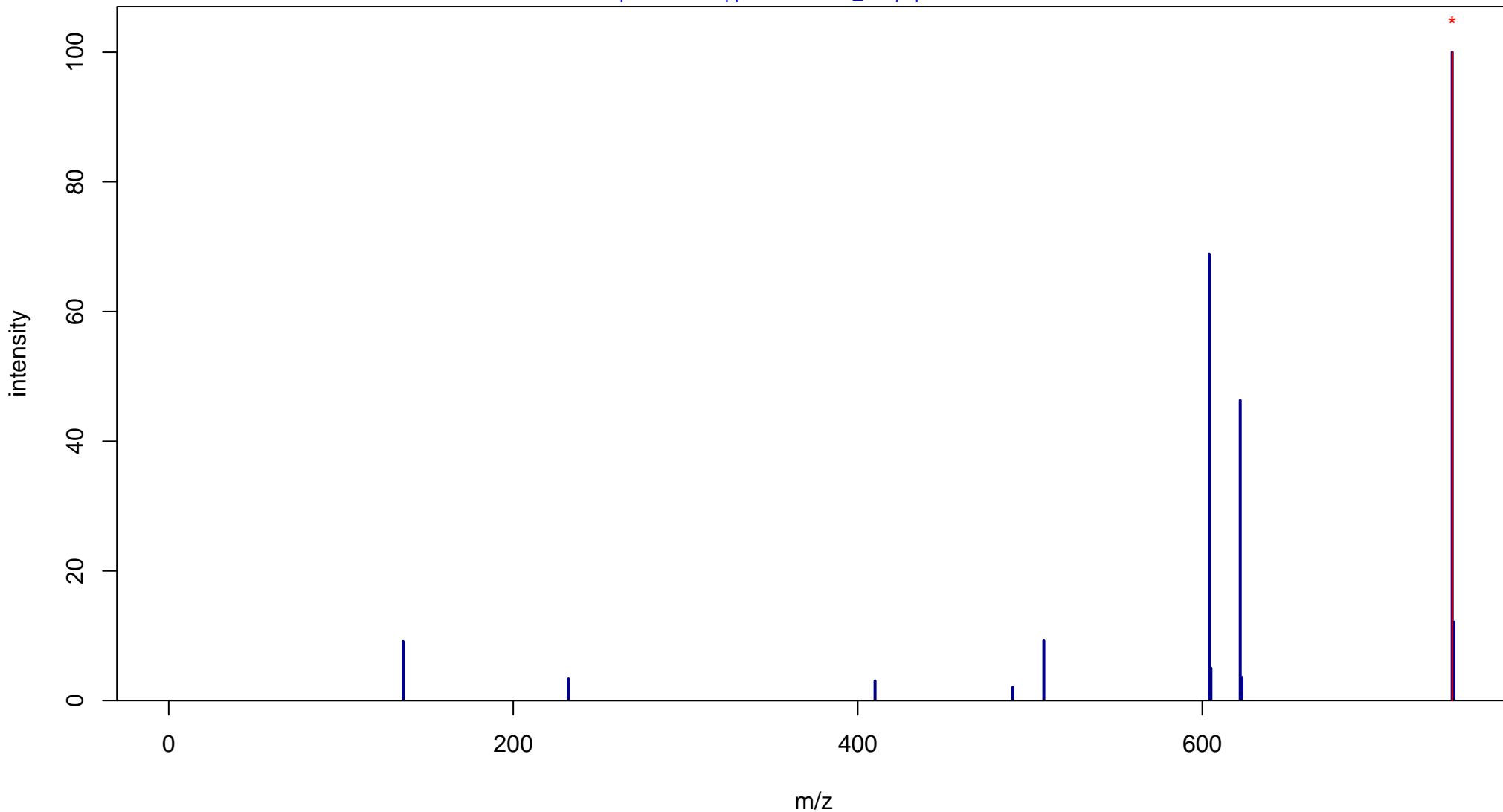
Nicotinic acid adenine dinucleotide phosphate sodium salt

Mass: 744.0595 Formula: C₂₁H₂₇N₆O₁₈P₃

mode: + collisionE: 10V

METLIN ID: 4235 SIGMA Prod: N5655

http://metlin.scripps.edu/metabo_info.php?molid=4235



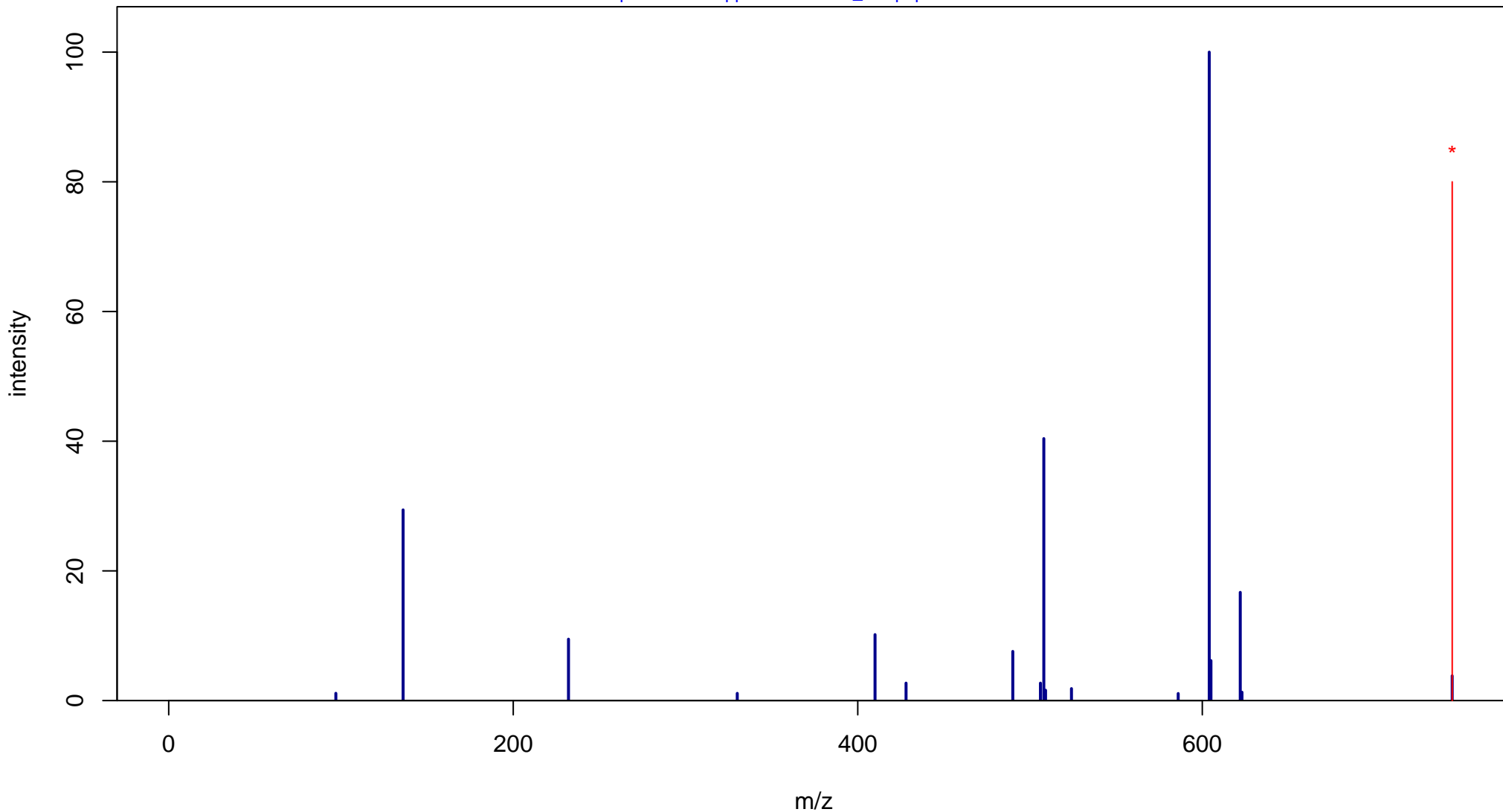
Nicotinic acid adenine dinucleotide phosphate sodium salt

Mass: 744.0595 Formula: C₂₁H₂₇N₆O₁₈P₃

mode: + collisionE: 20V

METLIN ID: 4235 SIGMA Prod: N5655

http://metlin.scripps.edu/metabo_info.php?molid=4235



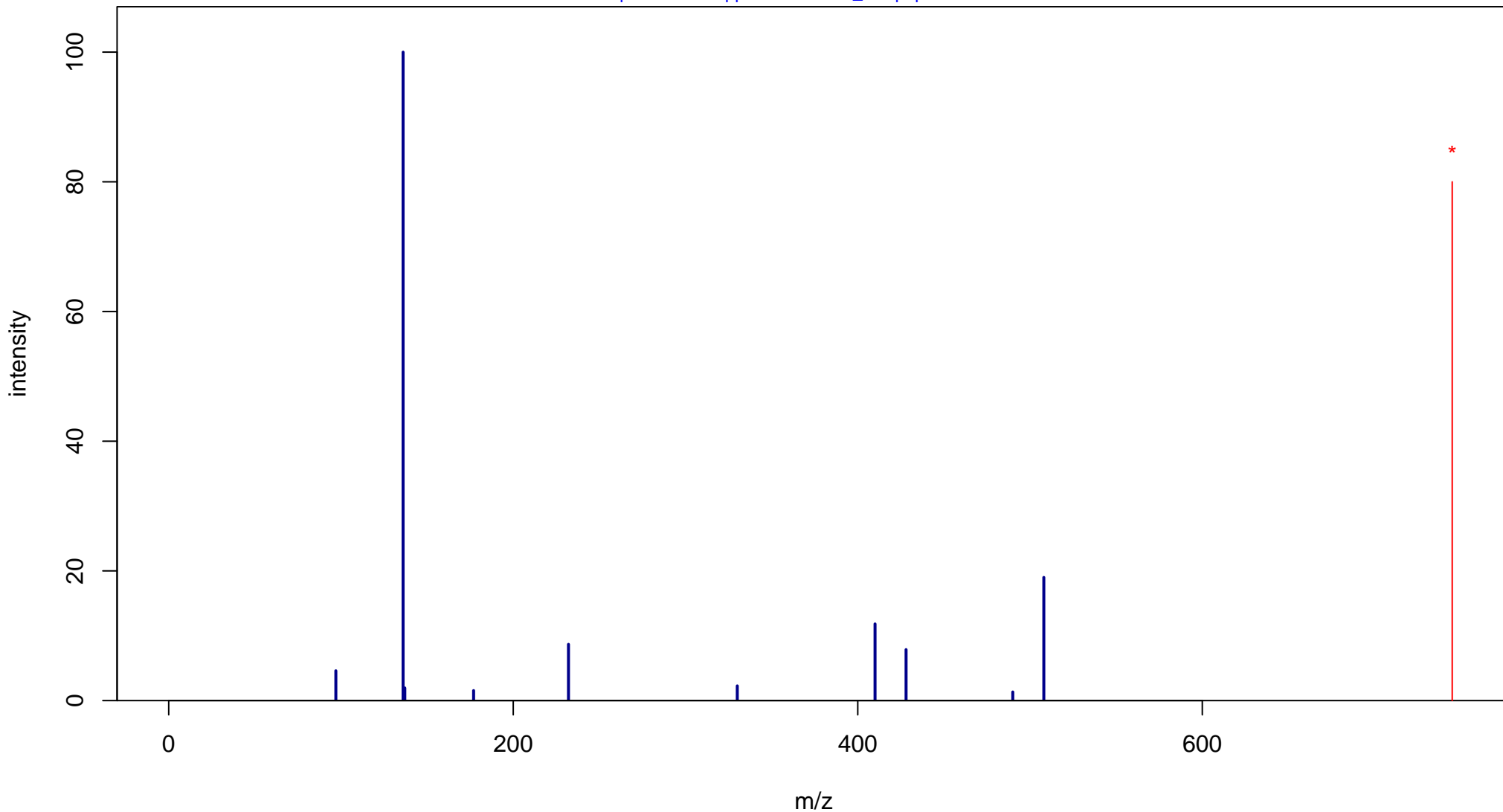
Nicotinic acid adenine dinucleotide phosphate sodium salt

Mass: 744.0595 Formula: C₂₁H₂₇N₆O₁₈P₃

mode: + collisionE: 40V

METLIN ID: 4235 SIGMA Prod: N5655

http://metlin.scripps.edu/metabo_info.php?molid=4235



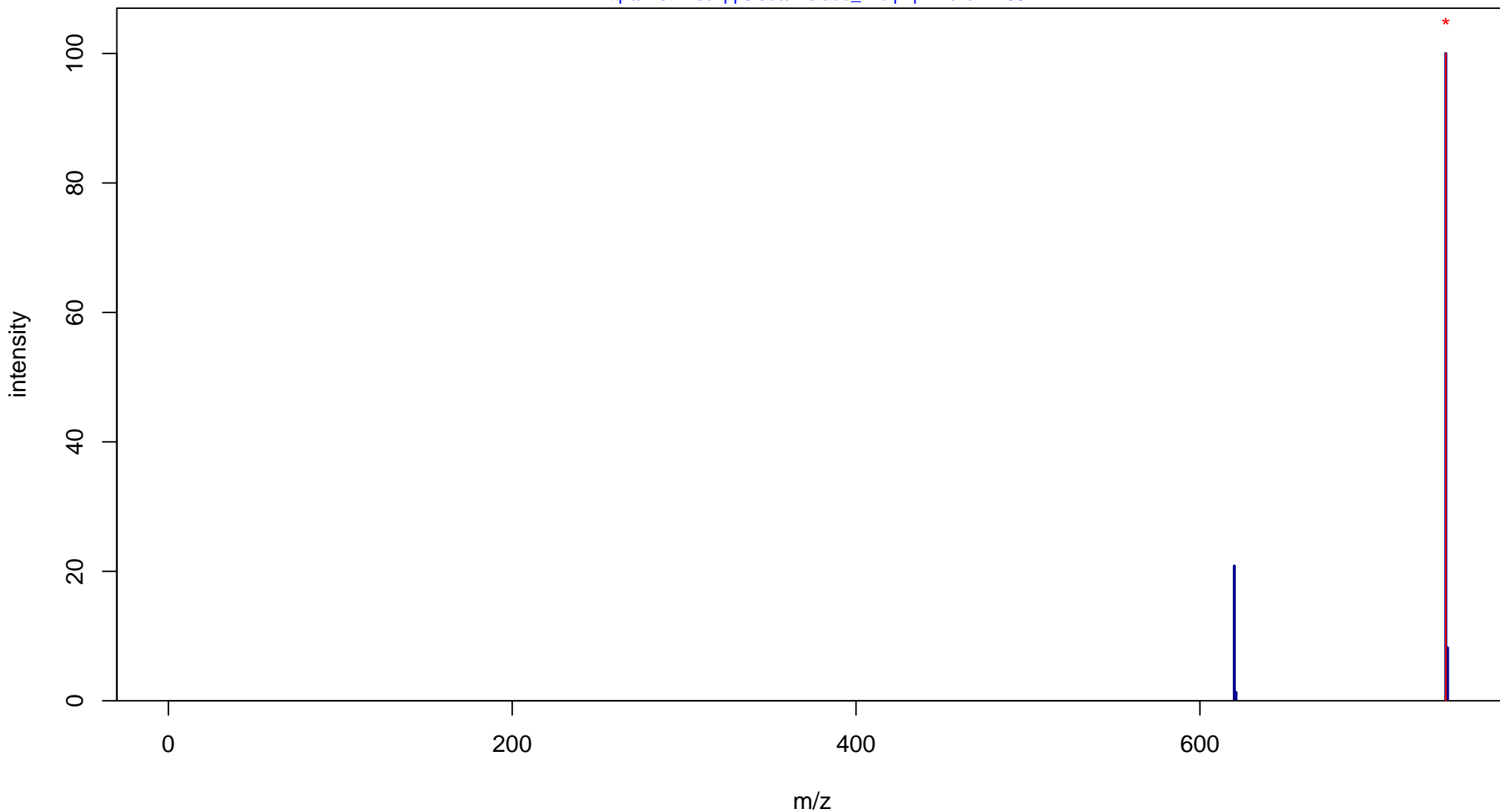
Nicotinic acid adenine dinucleotide phosphate sodium salt

Mass: 744.0595 Formula: C₂₁H₂₇N₆O₁₈P₃

mode: - collisionE: 0V

METLIN ID: 4235 SIGMA Prod: N5655

http://metlin.scripps.edu/metabo_info.php?molid=4235



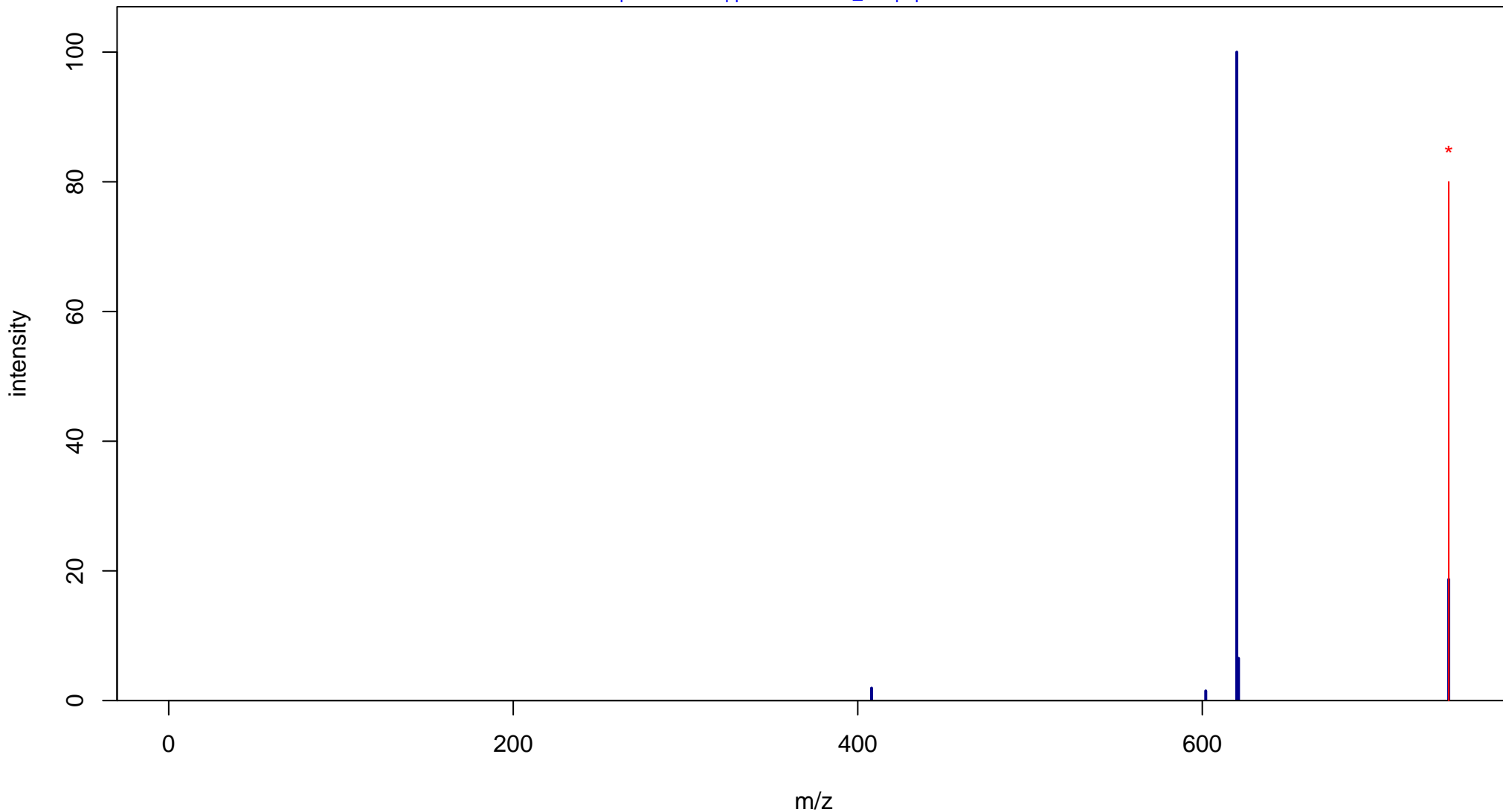
Nicotinic acid adenine dinucleotide phosphate sodium salt

Mass: 744.0595 Formula: C₂₁H₂₇N₆O₁₈P₃

mode: - collisionE: 10V

METLIN ID: 4235 SIGMA Prod: N5655

http://metlin.scripps.edu/metabo_info.php?molid=4235



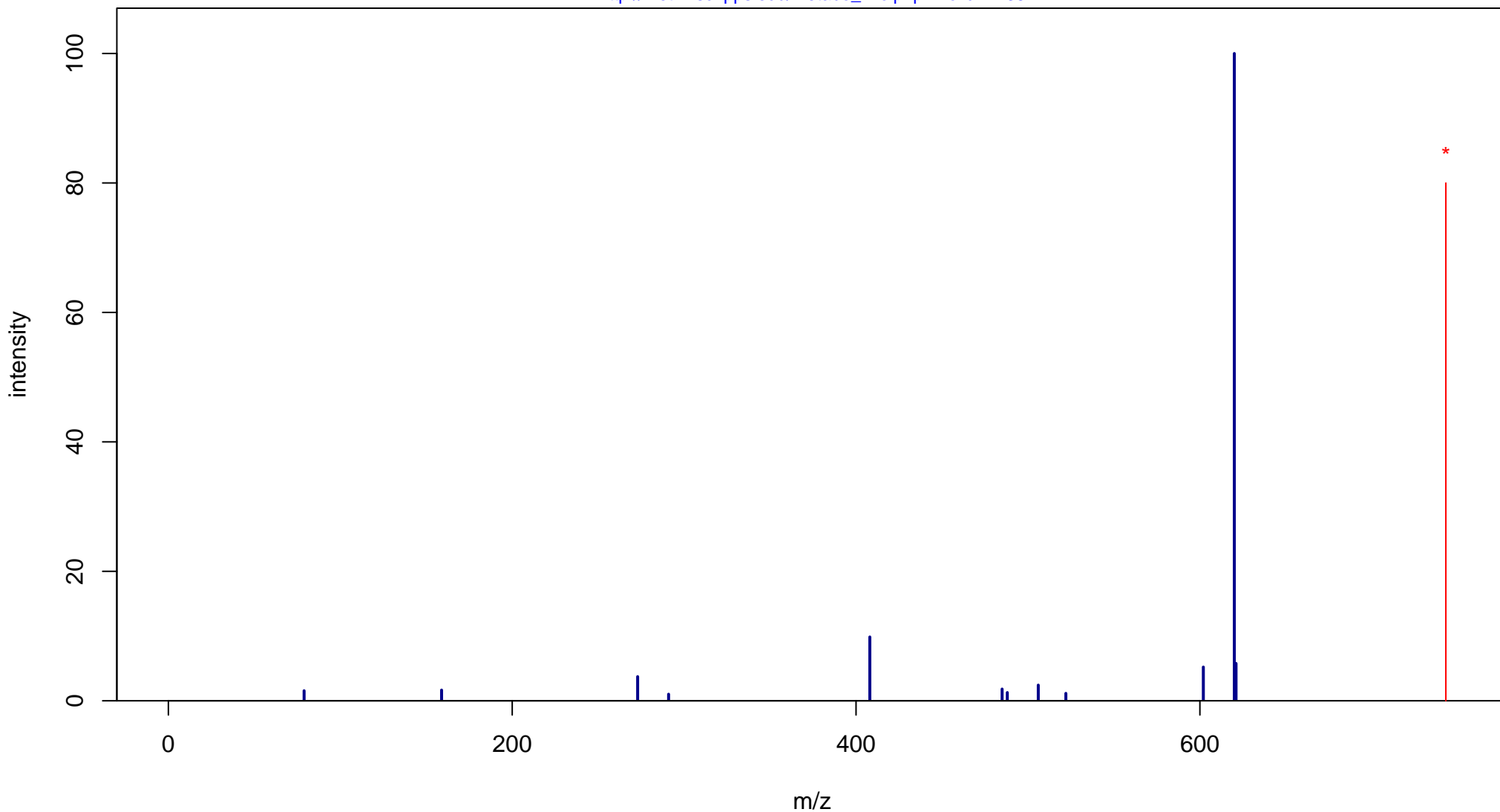
Nicotinic acid adenine dinucleotide phosphate sodium salt

Mass: 744.0595 Formula: C₂₁H₂₇N₆O₁₈P₃

mode: - collisionE: 20V

METLIN ID: 4235 SIGMA Prod: N5655

http://metlin.scripps.edu/metabo_info.php?molid=4235



Nicotinic acid adenine dinucleotide phosphate sodium salt

Mass: 744.0595 Formula: C₂₁H₂₇N₆O₁₈P₃

mode: - collisionE: 40V

METLIN ID: 4235 SIGMA Prod: N5655

http://metlin.scripps.edu/metabo_info.php?molid=4235

