

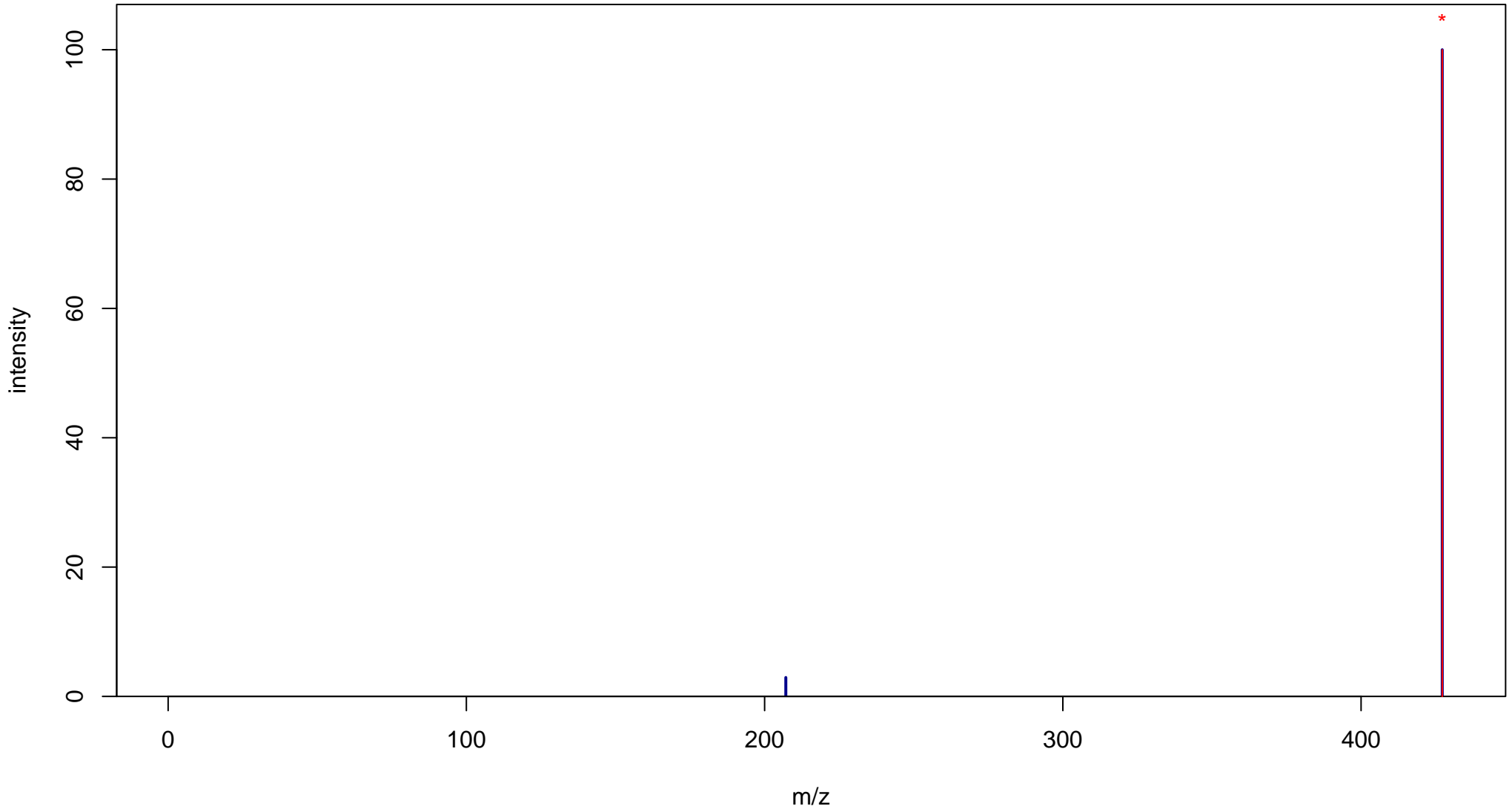
Paliperidone

Mass: 426.2067 Formula: C₂₃H₂₇FN₄O₃

mode: + collisionE: 0V

METLIN ID: 2349 SIGMA Prod: P0099

http://metlin.scripps.edu/metabo_info.php?molid=2349



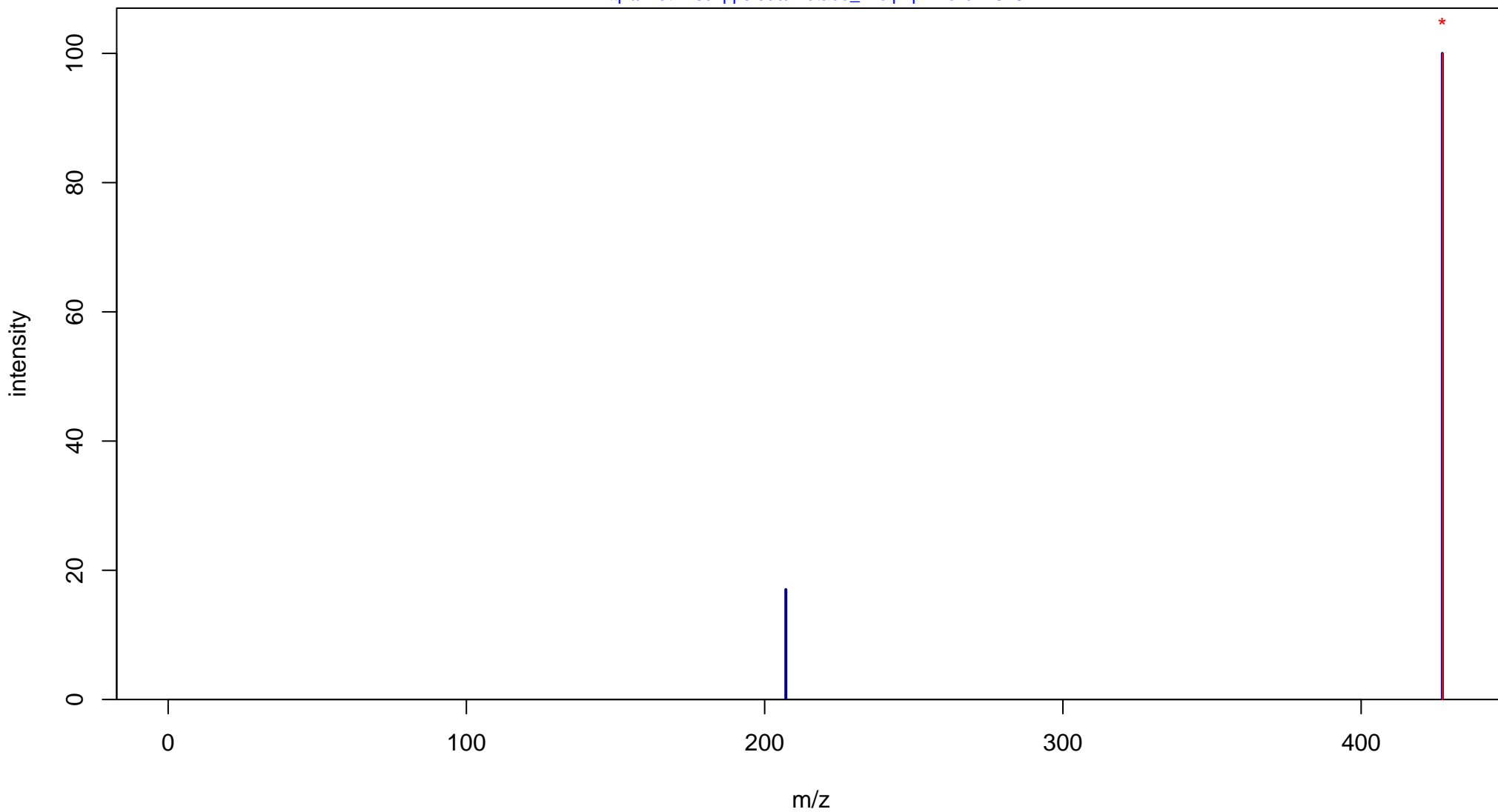
Paliperidone

Mass: 426.2067 Formula: C₂₃H₂₇FN₄O₃

mode: + collisionE: 10V

METLIN ID: 2349 SIGMA Prod: P0099

http://metlin.scripps.edu/metabo_info.php?molid=2349



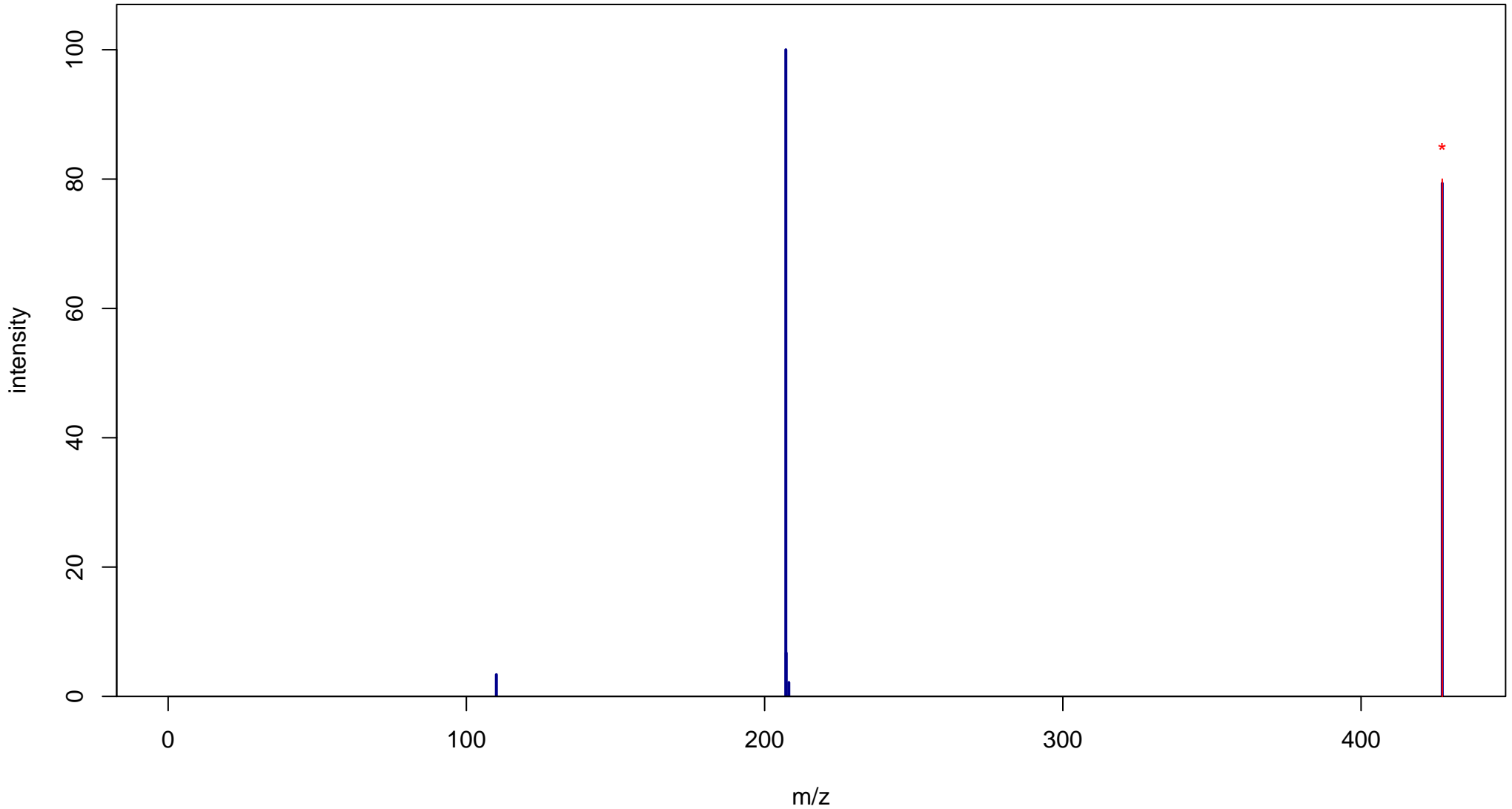
Paliperidone

Mass: 426.2067 Formula: C₂₃H₂₇FN₄O₃

mode: + collisionE: 20V

METLIN ID: 2349 SIGMA Prod: P0099

http://metlin.scripps.edu/metabo_info.php?molid=2349



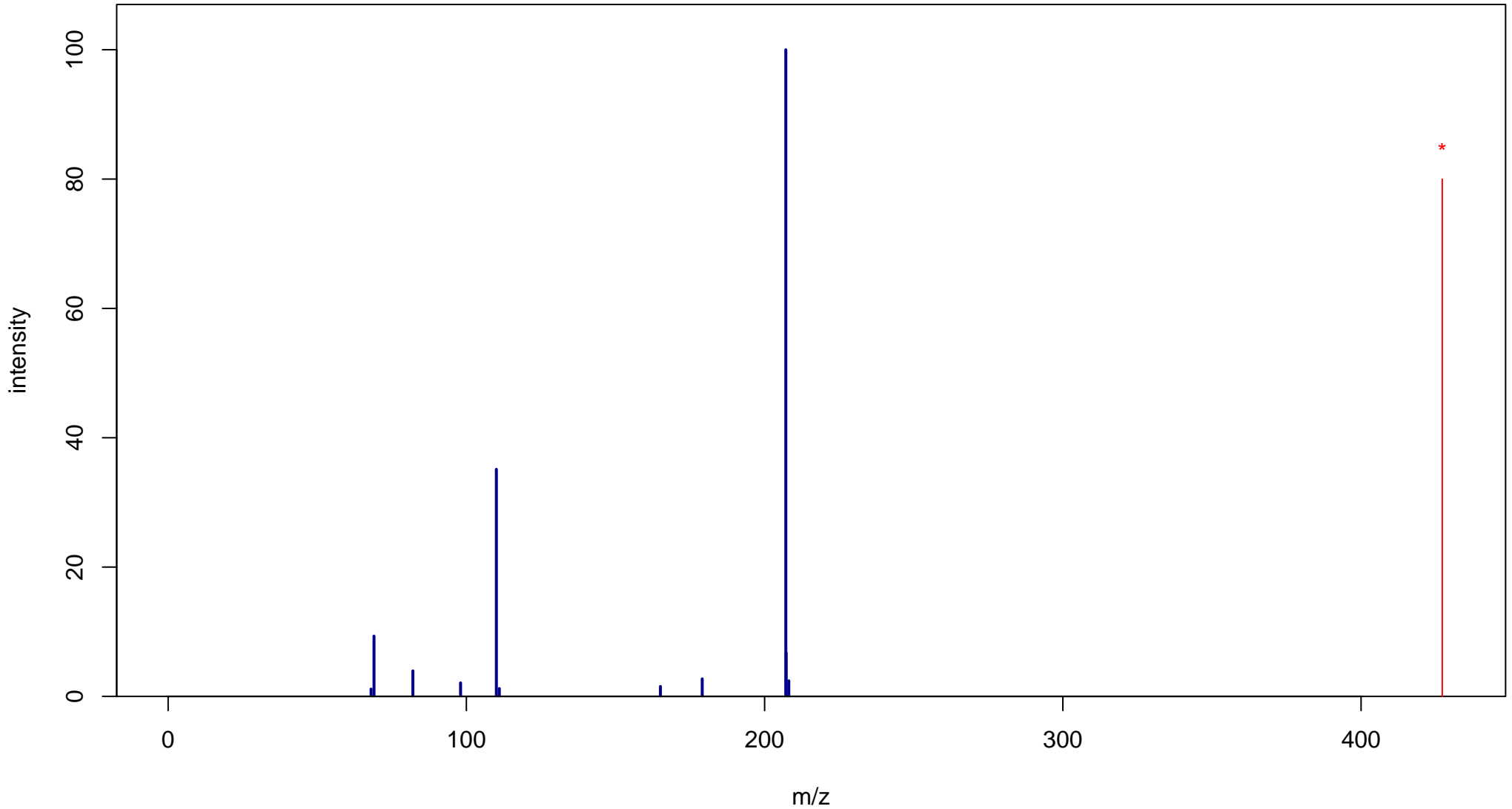
Paliperidone

Mass: 426.2067 Formula: C₂₃H₂₇FN₄O₃

mode: + collisionE: 40V

METLIN ID: 2349 SIGMA Prod: P0099

http://metlin.scripps.edu/metabo_info.php?molid=2349



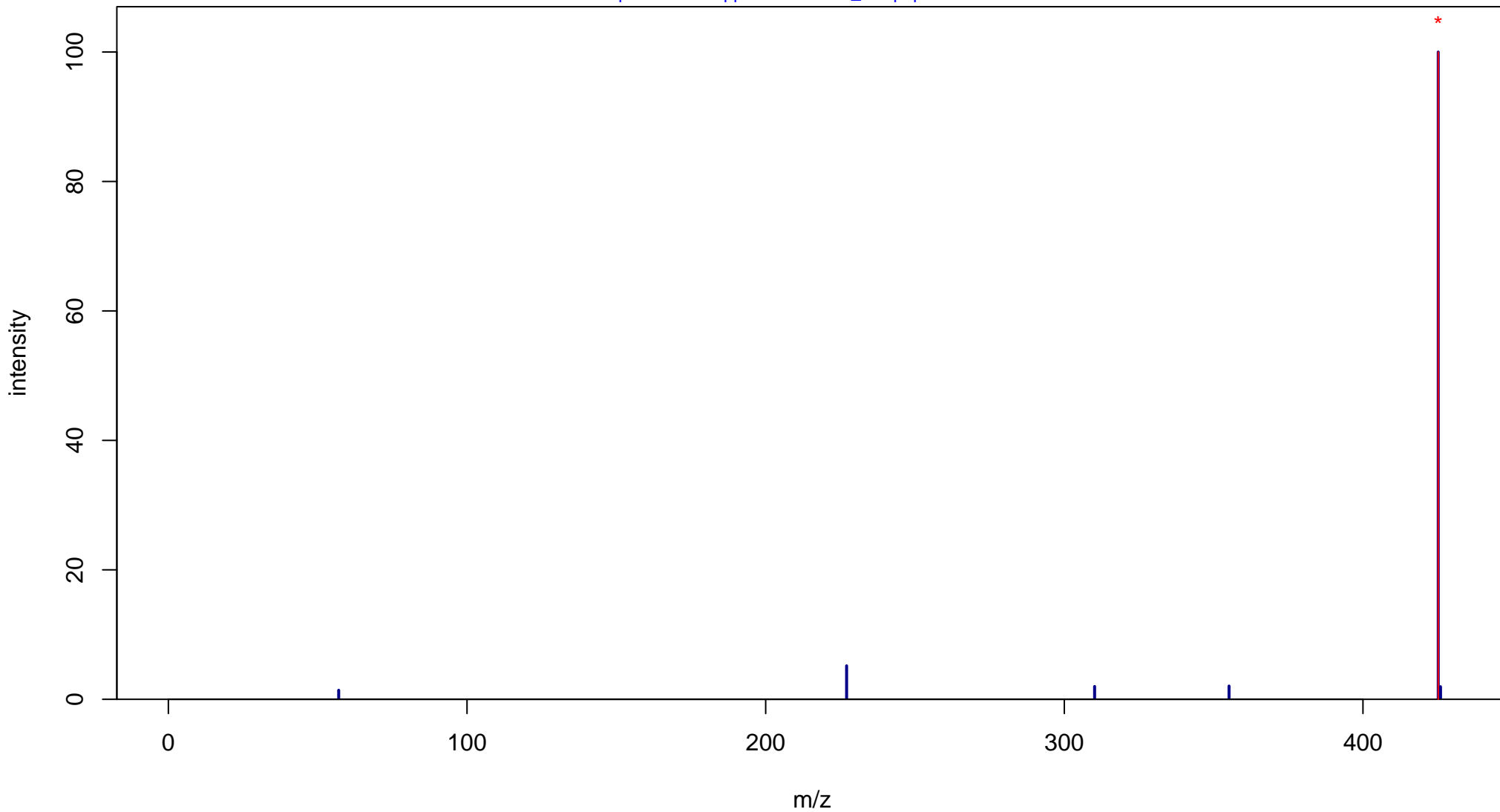
Paliperidone

Mass: 426.2067 Formula: C₂₃H₂₇FN₄O₃

mode: - collisionE: 0V

METLIN ID: 2349 SIGMA Prod: P0099

http://metlin.scripps.edu/metabo_info.php?molid=2349



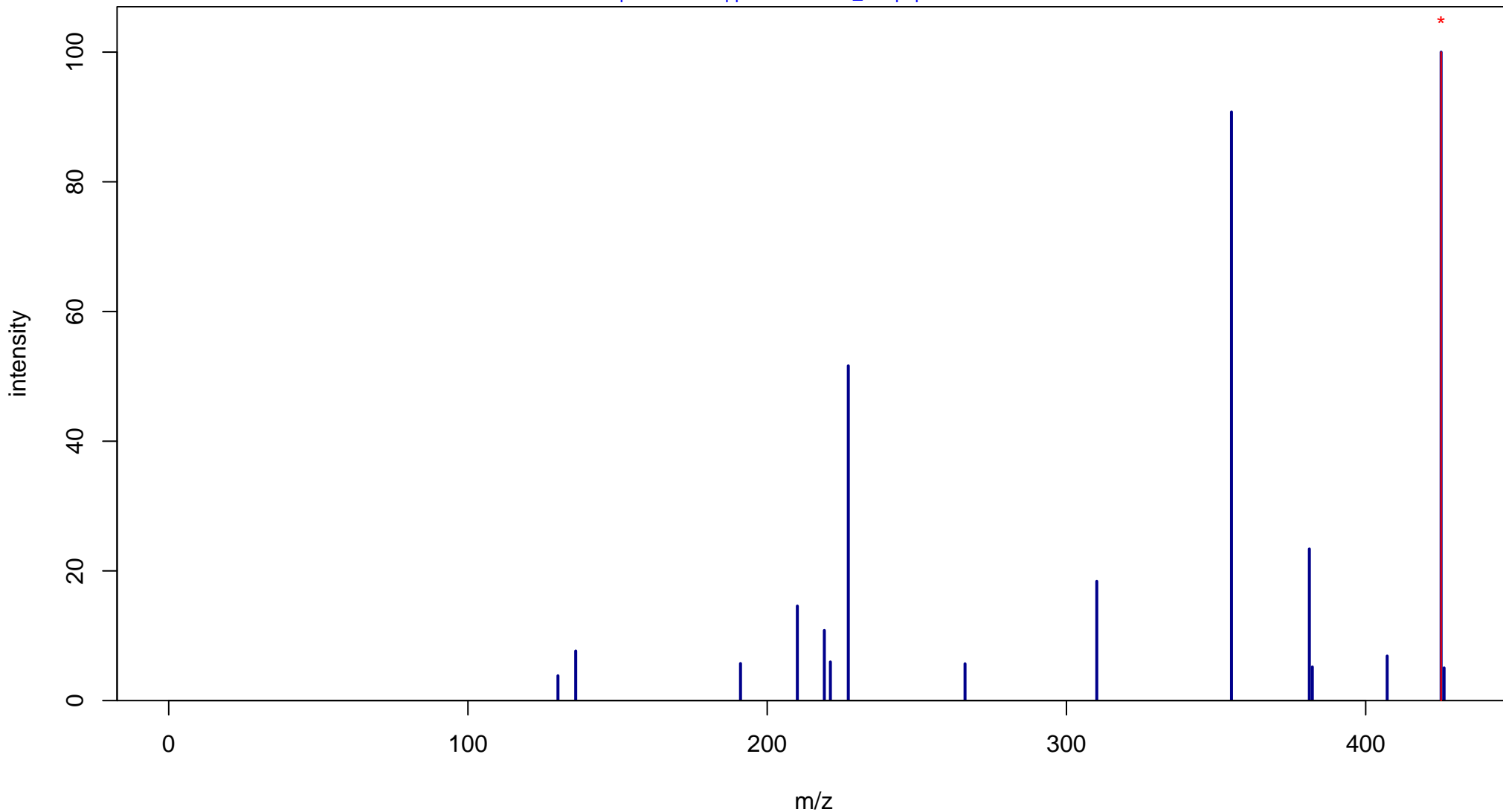
Paliperidone

Mass: 426.2067 Formula: C₂₃H₂₇N₄O₃

mode: - collisionE: 10V

METLIN ID: 2349 SIGMA Prod: P0099

http://metlin.scripps.edu/metabo_info.php?molid=2349



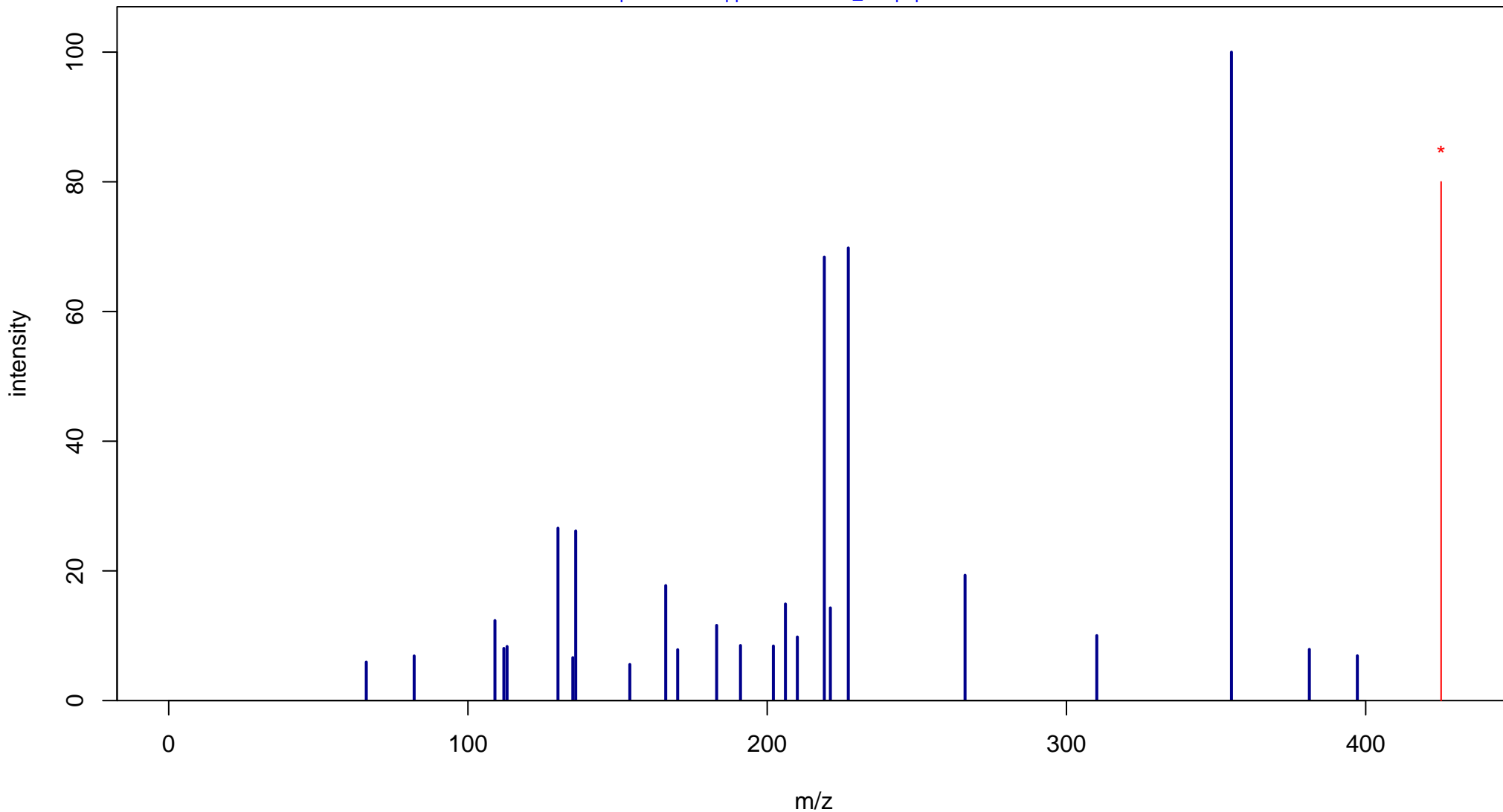
Paliperidone

Mass: 426.2067 Formula: C₂₃H₂₇FN₄O₃

mode: - collisionE: 20V

METLIN ID: 2349 SIGMA Prod: P0099

http://metlin.scripps.edu/metabo_info.php?molid=2349



Paliperidone

Mass: 426.2067 Formula: C₂₃H₂₇N₄O₃

mode: - collisionE: 40V

METLIN ID: 2349 SIGMA Prod: P0099

http://metlin.scripps.edu/metabo_info.php?molid=2349

