



# Caliper LifeSciences

## **Importing the HIS-Select™ iLAP™ (Sigma-Aldrich) Application for use on the Sciclone ALH 3000 Liquid Handling Workstation (Caliper Life Sciences)**

---

### **Table of Contents:**

- I. Description
- II. Hardware Requirements for the Sciclone ALH 3000
- III. Software Requirements for the Sciclone ALH 3000
- IV. Importing the iLAP Application
- V. If you don't have the correct Hardware Components
- VI. Contact Information

## I. Description

The Sciclone ALH 3000 Liquid Handling Workstation delivers highly accurate and precise liquid handling in a versatile, scalable, open-design format. With the flexibility to adapt as your needs change, it is ideal for automating a wide range of genomic, proteomic and drug screening protocols. The Sciclone application provided along with this document is designed to run Sigma's HIS-Select iLAP HC Nickel Coated plates for the integrated lysis and purification of recombinant histidine-tagged proteins from bacteria. The following describes the hardware and software requirements necessary to utilize this application file, along with instructions on how to import the file.

If you are working with a Sciclone that does not have the specified configuration or is operating with a different version of software, there are alternative ways to make use of this application file and/or to use the hardware components available to you. Given the many possible hardware configurations, we recommend that you contact Caliper Life Sciences for technical support on how best to proceed.

## II. Hardware Requirements for the Sciclone ALH 3000

The following Hardware is required to run the iLAP Sciclone Application:

Part Description	Quantity
Sciclone ALH 3000 with High Volume Pipetting Head, Z8 pipettor, Bulk Reagent Dispense Module with syringe pump, and Right Gripper.	1
I/O Box	1
Microplate Shaker Accessory	1
Tip Box Locators	7
200uL Disposable Tips	7

For ordering information please contact Caliper Life Sciences at 508-435-9761

## III. Software Requirements for the Sciclone ALH 3000

The iLAP applications and methods were created using Sciclone software version 3.2. This application can be transferred to other Sciclones that are running Sciclone software version 3.2. If you do not have Sciclone version 3.2, contact Caliper Life Sciences for assistance.

#### IV. Importing the iLAP Application

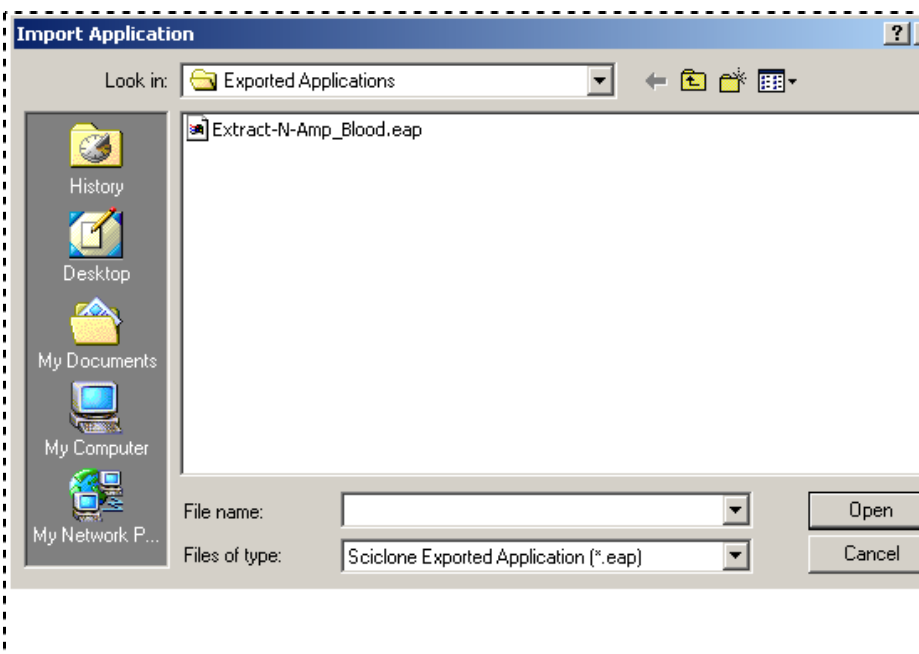
The iLAP application contains two methods:

iLAP\_SDS-PAGE  
iLAP\_BCA

Importing a Sciclone application copies the information stored in the application file (\*.eap) into the Sciclone database so you can run the application in the Sciclone software. Methods, along with required liquid classes and custom consumables that are used in the application are transferred. **Before importing the iLAP Sciclone application, make sure the destination computer has Version 3.2 Sciclone software.**

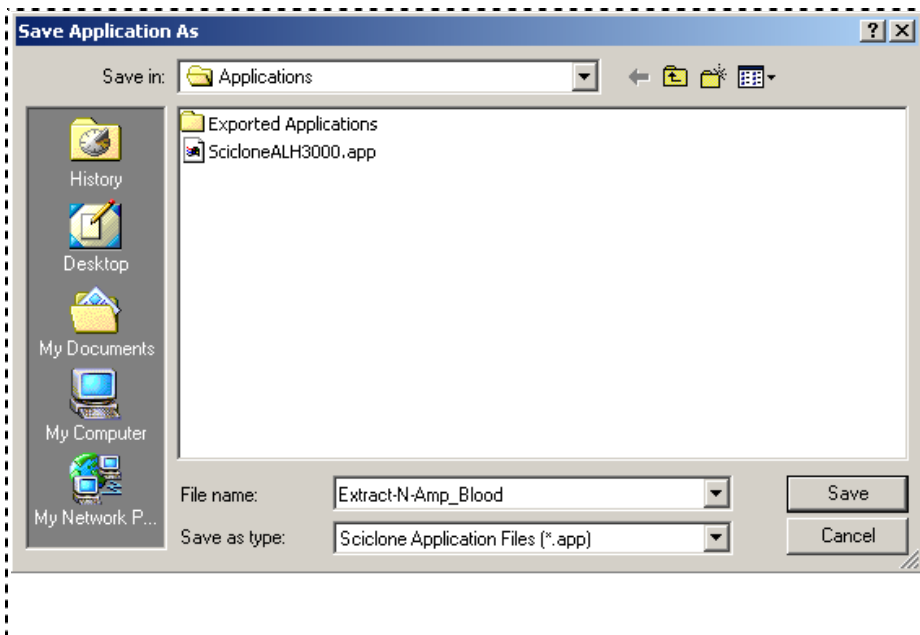
To import a Sciclone application:

- 1 Place the iLAP\_SDS-PAGE.eap file into the Exported Applications folder of the Sciclone software. The path to this folder is as follows:  
**C:/Programs/Zymark/Instruments/Sciclone/ICP/Applications/Exported Applications**
- 2 Open the Sciclone software
- 3 From the main menu in Method Editor window, choose **File→Import Application**. The “Import Application window” opens (see [Figure 1](#)), displaying a list of all the applications that have been exported and can be imported into the Sciclone software.



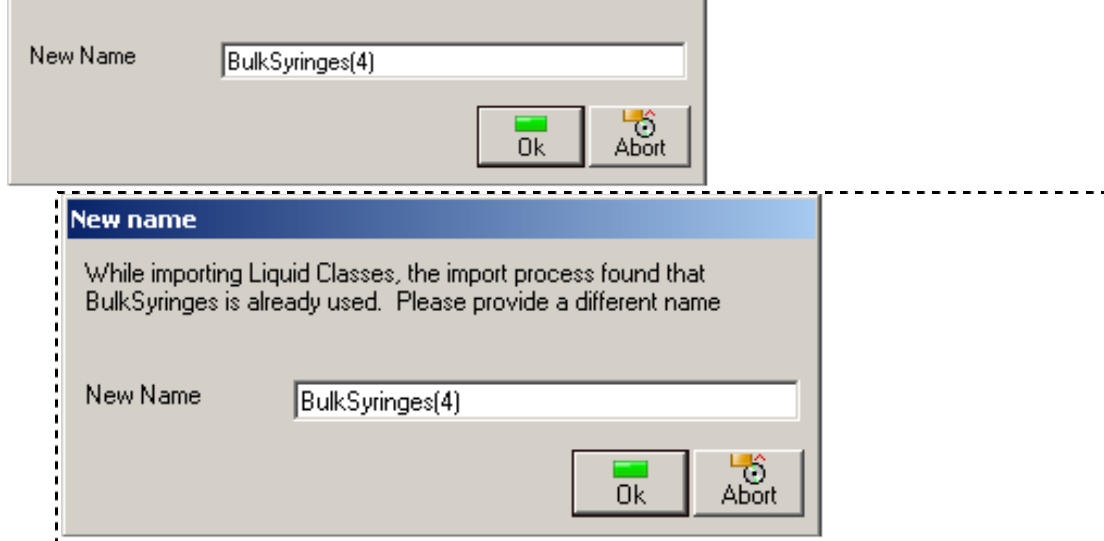
**Figure 1. Import Application Window**

- 4 Select the name of the application that you want to import.
- 5 Click the **Open** button. The “Save Application As” window opens, as shown in [Figure 2](#).



**Figure 2. Save Application As Window**

- 6 Type the file name you want to use to save the imported application, and click the **Save** button.
  - If an application with the same name doesn't exist, the application is imported into the Sciclone database along with the methods required for the application.
  - If an application with the same name already exists, a window opens asking if you want to overwrite it. Click the:
    - **Yes** button to overwrite the existing file. The application is imported into the Sciclone database along with the methods required for the application.
    - **No** button to change the name of the application. The Save an Application window reopens. Edit the name of the application file and then click the **OK** button. The application is imported into the Sciclone database along with the methods required for the application.
    - **Cancel** button to stop the import operation.
- 7 If the names of the Liquid Classes used in the imported application already exist in the Sciclone Controller, you will get a New Name Window (Figure 3).



- 8 When you select a name for the liquid class you are importing, it will change the application to use the new liquid class name in the methods.

#### V. If you don't have the correct Hardware Components

If you don't have the correct hardware components, in most cases modifications can be made to the application that enable it to be run. Contact Caliper Life Sciences to determine the best option for your situation.

#### VI. Contact Information

Caliper Life Sciences Technical Support Center:

Phone: 508-435-9761

e-mail: [techsupport@caliperls.com](mailto:techsupport@caliperls.com)