



Titan™ UHPLC Columns (1.9 μm)

Outperforms other UHPLC columns with the narrowest particle size distribution of any sub-2 μm totally porous particles



Supelco® introduces Titan™ C18 UHPLC columns, based on 1.9 μm totally porous, monodisperse silica particles. These particles are the result of a newly developed, patent-pending, Ecoporous™ silica manufacturing process.

Titan delivers:

- Efficiency > 250,000 N/m, comparable to leading UHPLC columns
- Narrow particle size distribution translates to rugged, reliable performance
- A great value, available at half the cost of other UHPLC columns

Figure 1. Particle Size Distribution Comparison for Different Silicas

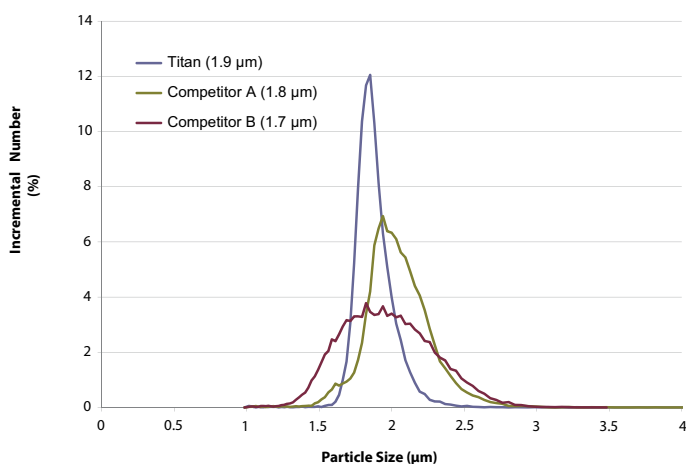


Figure 2. Titan C18 Performance Comparison in Acetonitrile

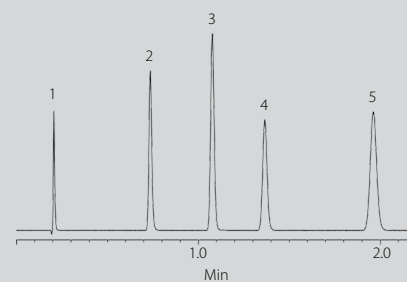
Comparison of the Titan performance to commercially available sub-2 μm columns

Dionex® 3000 (Low D tubing)

column: 5 cm x 3.0 mm I.D.	1. Uracil
mobile phase: 60% acetonitrile	2. Diazepam
temp: 35 °C	3. Toluene
flow rate: 0.9 mL/min (4 mm/s)	4. Naphthalene
detection: 254 nm	5. Biphenyl

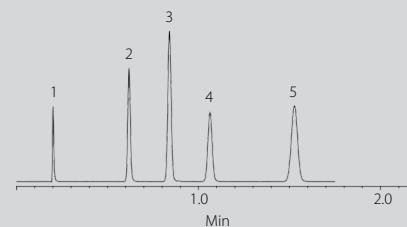
Titan C18, 1.9 μm

N= 14,710
N/m= 294,200
h= 1.75
σ= 1.05
Pressure*= 4,100psi



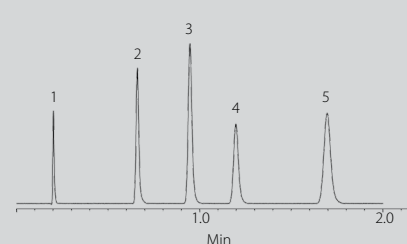
Competitor A C18, 1.8 μm

N= 9,260
N/m= 185,200
h= 3.18
σ= 1.02
Pressure*= 4,650psi



Competitor B C18, 1.7 μm

N= 9,783
N/m= 195,700
h= 2.84
σ= 1.16
Pressure*= 4,900psi



* Total System Pressure

Table 1. Titan Porous Silica Characteristics

Particle Size* μm	Pore Diameter \AA	Surface Area m^2/g	Pore Volume cc/g	Pressure psi (bar)
1.9	80	410	0.76	18000 (1241)

*Very narrow distribution: D (90/10) < 1.15

Ordering Information

Description	Qty.	Cat. No.
Titan C18 Columns, 1.9 μm		
2 cm x 2.1 mm	1	577120-U
3 cm x 2.1 mm	1	577121-U
5 cm x 2.1 mm	1	577122-U
7.5 cm x 2.1 mm	1	577123-U
10 cm x 2.1 mm	1	577124-U
3 cm x 3.0 mm	1	577125-U
5 cm x 3.0 mm	1	577126-U
10 cm x 3.0 mm	1	577132-U
Titan C18 Guard Cartridges, 1.9 μm		
2.1 mm	3	577127-U
3.0 mm	3	577128-U

For more information, visit

sigma-aldrich.com/titan

*Enabling Science to
Improve the Quality of Life*

Order/Customer Service (800) 325-3010 • Fax (800) 325-5052
Technical Service (800) 325-5832 • sigma-aldrich.com/techservice
Development/Custom Manufacturing Inquiries **SAFC® (800) 244-1173**
Safety-related Information sigma-aldrich.com/safetycenter

World Headquarters
 3050 Spruce St.
 St. Louis, MO 63103
 (314) 771-5765
sigma-aldrich.com