

TheReporter

Reprinted from Volume 14, No. 3, 1995

T295033

© 1999 Sigma-Aldrich Co.

For more information, or current prices, contact your nearest Supelco subsidiary listed below. To obtain further contact information, visit our website (www.sigma-aldrich.com), see the Supelco catalog, or contact Supelco, Bellefonte, PA 16823-0048 USA.

ARGENTINA • Sigma-Aldrich de Argentina, S.A. • Av. Pueyrredon 2446/50 • Piso 5-B • Buenos Aires 1119
AUSTRALIA • Sigma-Aldrich Pty. Ltd. • Unit #2, 14 Anella Avenue • Castle Hill NSW 2154
AUSTRIA • Sigma-Aldrich Handels GmbH • Hebbelplatz 7 • A-1110 Wien
BELGIUM • Sigma-Aldrich N.V./S.A. • K. Cardijnplein 8 • B-2880 Bornem
BRAZIL • Sigma-Aldrich Quimica Brasil Ltda. • Rua Sabara, 566-Conj. 53 • 01239-010 São Paulo, SP
CANADA • Sigma-Aldrich Canada, Ltd. • 2149 Winston Park Dr., Oakville, ON L6H 6J8
CZECH REPUBLIC • Sigma-Aldrich s.r.o. • Pobrezni 46 • 186 21 Praha 8
DENMARK • Sigma-Aldrich Denmark A/S • Vejlegaardsvej 65B • DK-2665 Vallensbaek Strand
FINLAND • Sigma-Aldrich Finland/YA-Kemia Oy • Teerisuonkuja 4 • FIN-00700 Helsinki
FRANCE • Sigma-Aldrich Chimie • Chromatographie Supelco • L'Isle d'Abeau Chesnes - B.P. 701 • 38297 Saint-Quentin Fallavier Cedex
GERMANY • Sigma-Aldrich Chemie GmbH • Geschäftsbereich Supelco • Grünwalder Weg 30 • D-82041 Deisenhofen
GREECE • Sigma-Aldrich (o.m.) Ltd. • 72 Argonafton Str. • 16346 Ilioupoli, Athens
HUNGARY • Sigma-Aldrich Kft. • Nagy Diófa u. 7., IV fl. • H-1067 Budapest
INDIA • Sigma-Aldrich Co. • Survey No. 31/1, Sitharamapalaya • Mahadevapura P.O. • Bangalore 560 048
IRELAND • Sigma-Aldrich Ireland Ltd. • Airtown Road • Tallaght • Dublin 24
ISRAEL • Sigma Israel Chemicals Ltd. • Park Rabin • Rohovot 76100
ITALY • Sigma-Aldrich s.r.l. • Via Gallarate, 154 • 20151 Milano
JAPAN • Sigma-Aldrich Japan K.K. • Division Supelco • JL Nihonbashi Building • 1-10-15 Nihonbashi Horidome-cho, Chuo-ku • Tokyo 103
KOREA • Sigma-Aldrich Korea • Samhan Camus Annex, 10th Floor • 17-26 Yoido-dong, Yungdeungpo-ku • Seoul
MALAYSIA • Sigma-Aldrich (M) Sdn. Bhd. • 9-2, Jalan 2/128, Taman Gembira • Off Jalan Kuchai Lama • 58200 Kuala Lumpur • Selangor
MEXICO • Sigma-Aldrich Química S.A. de C.V. • Calle 6 North No. 107 • Parque Industrial Toluca 2000 • 50200 Toluca
NETHERLANDS • Sigma-Aldrich Chemie BV • Postbus 27 • 3330 AA Zwijndrecht
NORWAY • Sigma-Aldrich Norway • Sandakerveien 102 • N-0483 Oslo
POLAND • Sigma-Aldrich Sp. z o.o. • Szelagowska 30 • 61-626 Poznań
PORTUGAL • Sigma-Aldrich Quimica, S.A. • P.O. Box 131 • Sintra 2710
RUSSIA • Sigma-Aldrich Russia • TOO Techmedbiochem • Makarenko Str. 2/21 • Building 1, Flat 22 • Moscow 103062
SINGAPORE • Sigma-Aldrich Pte. Ltd. • 102E Pasir Panjang Road • #08-01 Citilink Warehouse • Singapore 118529
SOUTH AFRICA • Sigma-Aldrich (pty) Ltd. • CNR Kelly & Ackerman Streets • Southern Life Industrial Park Unit • Unit 16/17 • Jet Park 1459
SPAIN • Sigma-Aldrich Quimica, S.A. • Apt. Correos 161 • 28100 Alcobendas, Madrid
SWEDEN • Sigma-Aldrich Sweden AB • Solkraftsvägen 14C • 135 70 Stockholm
SWITZERLAND • Supelco Switzerland • Industriestrasse 25 • P.O. Box 260 • CH-9471 Buchs
UNITED KINGDOM • Sigma-Aldrich Company Ltd. • Supelco UK • Fancy Road, Poole • Dorset BH12 4QH
UNITED STATES • Supelco • Supelco Park • Bellefonte, PA 16823-0048 • Phone 800-247-6628 or 814-359-3441 • Fax 800-447-3044 or 814-359-3044 • email:supelco@sial.com

H

This article is archived from a past issue of The Supelco Reporter. Information in the article was appropriate at the time of publication, but product specifications, catalog numbers, and availability may have changed over time.

If you have questions about applying methodology described in this article to a current application, please contact our technical service chemists.

 **SUPELCO**

ISO 9001
REGISTERED

Supelco is a member of the Sigma-Aldrich family. Supelco products are sold through Sigma-Aldrich, Inc. Sigma-Aldrich warrants that its products conform to the information contained in this and other Sigma-Aldrich publications. Purchaser must determine the suitability of the product for a particular use. Additional terms and conditions may apply. Please see the reverse side of the invoice or packing slip.

Polyacrylate Film Fiber for Solid Phase MicroExtraction of Polar Semivolatiles from Water

R. E. Shirey

An 85µm polyacrylate fiber used in the recently-introduced solid phase microextraction technique effectively extracts difficult polar compounds, such as phenols, from water samples. A polyacrylate-coated fiber overcomes the problems of removing polar analytes from a polar matrix. This newest development enhances the importance of SPME as a simple, practical, and cost-effective extraction technique that meets US EPA specifications.

Extracting polar semivolatile compounds from water samples can be a difficult operation for the environmental chemist. Attempts to isolate phenols and other polar semivolatiles using conventional extraction methods (liquid-liquid extraction, solid phase extraction, and supercritical fluid extraction) require either high-priced instrumentation or extensive training and time, and often are not successful.

A simple, cost-effective, time-saving extraction method is quickly gaining acceptance as the preferred technique. Solid phase microextraction[®] (SPME) is the revolutionary technique developed by Janusz Pawliszyn and associates at the University of Waterloo, Ontario, Canada (Reporter Vol. 12, No. 4). In SPME, a phase-coated fiber contained within a syringe is exposed to the sample, allowing the analytes to adsorb to the fiber coating. Adsorption equilibrium is attained in 2 to 15 minutes. After sample adsorption, the fiber is withdrawn into the needle, and the needle is removed from the sample vial and introduced into the GC injector, where the adsorbed analytes are thermally desorbed and analyzed.

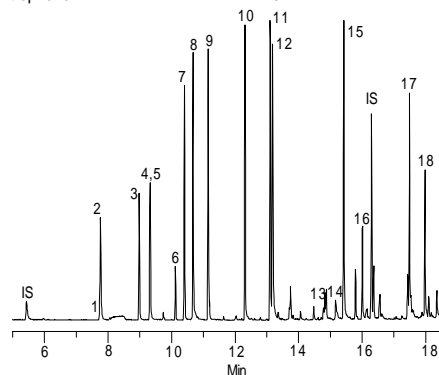
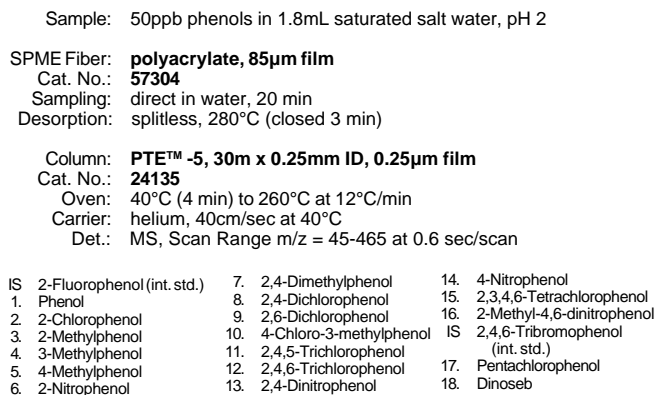
SPME has important advantages. It is quick, highly sensitive, and versatile (SPME can be used with any gas chromatograph or GC-mass spectrometer, with split/splitless or on-column injection). No solvents or complicated apparatus are required. Any problems associated with solvent use and disposal are largely eliminated.

A recently developed SPME fiber assembly is coated with 85µm of polyacrylate. This unit easily extracts polar analytes, such as phenols, from water in less than 20 minutes.

We used an 85µm polyacrylate film fiber to extract phenols at 50ppb from a 1.8mL sample (Figure A). Lowering the sample pH to 2 and saturating it with sodium chloride greatly improved the extraction. High desorption temperatures resulted in sharp peaks. Our new low volume injection port liner (0.75mm ID) allowed rapid transfer of the phenols to the GC column, contributing to the excellent quality of the peak shapes. Low-bleed, pre-drilled Thermogreen[™] LB-2 septa reduced septum coring that can cause extraneous peaks.

Table 1 shows the response factors over a concentration range of 5 to 200ppb. Note that the standard deviation is improved if the calibration curve is calculated from 10 to 200ppb. US Environmental Protection Agency (US EPA) methods 604 and 8040 list tables

Figure A. Phenols Extracted at 50ppb, Using an 85µm Polyacrylate SPME Fiber



794-0199

showing %RSDs in the 20s and 30s. SPME yielded excellent %RSDs, under 20 for most of the analytes. The only compound with %RSDs greater than 30 was the more polar 2,4-dinitrophenol.

The reproducibility of the SPME extraction technique is illustrated in Table 2. Conducting this evaluation with three fibers demonstrated the consistency between fibers and precision of the analysis. Except for the nitro-substituted phenols, the %RSDs were quite low.

In addition to the polyacrylate-coated fiber, Supelco offers SPME fiber assemblies with polydimethylsiloxane (PDMS) film. Our 100µm PDMS fiber effectively extracts volatile, low molecular weight organic compounds. A 7µm PDMS fiber offers faster equilibration of less volatile analytes and a higher desorption temperature limit (320°C vs. 280°C). The SPME devices can be used in both manual and autosampling modes. All are reusable.

For more information on the polydimethylsiloxane-coated fibers, request literature no. 394006 (for extracting volatile compounds) and 394011 (for mid- to nonpolar semivolatiles).

Table 1. Summary of Calibration Curve Response Factors for Phenols by SPME

Compound	5ppb to 200ppb			10ppb to 200ppb		
	Avg.	S.D.	%RSD	Avg.	S.D.	%RSD
2-Fluorophenol (int. std.)						
Phenol	0.33	0.04	11.4	0.32	0.02	7.5
2-Chlorophenol	1.15	0.05	4.6	1.15	0.06	4.9
2-Methylphenol	0.69	0.03	5.1	0.68	0.03	5.1
3- & 4-Methylphenol	1.18	0.08	6.9	1.19	0.08	7.1
2-Nitrophenol	0.29	0.08	25.8	0.30	0.07	22.7
2,4-Dimethylphenol	1.15	0.10	8.6	1.14	0.10	8.8
2,4-Dichlorophenol	1.32	0.14	10.8	1.34	0.13	9.7
2,6-Dichlorophenol	1.33	0.14	10.5	1.35	0.13	9.5
4-Chloro-3-methylphenol	0.98	0.08	7.9	0.98	0.08	8.3
2,4,5-Trichlorophenol	1.01	0.06	6.3	1.00	0.07	6.6
2,4,6-Trichlorophenol	1.01	0.09	8.4	1.00	0.08	8.3
2,4-Dinitrophenol	0.08	0.04	50.3	0.08	0.04	44.7
4-Nitrophenol	0.20	0.03	17.5	0.20	0.03	15.6
2,3,4,6-Tetrachlorophenol	0.70	0.13	18.7	0.68	0.12	18.1
2-Methyl-4,6-dinitrophenol	0.26	0.09	36.1	0.28	0.08	30.2
2,4,6-Tribromophenol (int. std.)						
Pentachlorophenol	0.31	0.09	29.3	0.29	0.08	27.9
Dinoseb	0.27	0.08	29.1	0.29	0.07	25.0

Table 2. Summary of Response Factors for Phenols at 50ppb

TriPLICATE extractions for 3 fibers (n = 9)			
	Avg.	S.D.	%RSD
2-Fluorophenol (int. std.)			
Phenol	0.44	0.05	12.3
2-Chlorophenol	1.60	0.17	10.5
2-Methylphenol	0.81	0.10	13.0
3- & 4-Methylphenol	1.77	0.22	12.5
2-Nitrophenol	0.49	0.05	10.1
2,4-Dimethylphenol	1.60	0.23	14.2
2,4-Dichlorophenol	1.06	0.13	12.7
2,6-Dichlorophenol	1.02	0.12	12.1
4-Chloro-3-methylphenol	0.74	0.09	11.8
2,4,5-Trichlorophenol	0.79	0.09	11.3
2,4,6-Trichlorophenol	0.83	0.09	10.8
2,4-Dinitrophenol	0.06	0.02	25.5
4-Nitrophenol	0.14	0.03	21.0
2,3,4,6-Tetrachlorophenol	0.69	0.08	11.9
2-Methyl-4,6-dinitrophenol	0.18	0.02	13.2
2,4,6-Tribromophenol (int. std.)			
Pentachlorophenol	0.42	0.09	21.3
Dinoseb	0.27	0.04	14.3

■ Technology licensed exclusively to Supelco. US patent #5,691,206; European patent #0523092.

▲ First time users must order both holder and fiber assembly. Holder is reusable indefinitely. Use with Varian 8100/8200 AutoSampler. Requires Varian SPME upgrade kit.

Trademarks

Hewlett Packard – Hewlett Packard Corp.
PTE, Thermogreem – Sigma-Aldrich Co.

Fused silica columns manufactured under HP US Pat. No. 4,293,415.

Ordering Information:

Description	Cat. No.
SPME Fiber Assembly (pkg. of 3)	
85µm polyacrylate coating for polar semivolatiles	
For manual sampling	57304
For Varian 8100/8200 AutoSampler	57305
7µm polydimethylsiloxane coating for mid- to nonpolar semivolatiles	
For manual sampling	57302
For Varian 8100/8200 AutoSampler	57303
100µm polydimethylsiloxane coating for volatiles	
For manual sampling	57300-U
For Varian 8100/8200 AutoSampler	57301
SPME Holder[▲]	
For manual sampling	57330-U
For Varian 8100/8200 AutoSampler	57331
PTE-5 Fused Silica Capillary Column	
30m x 0.25mm ID, 0.25µm film	24135
Inlet Liners, Splitless, 0.75mm ID	
For Hewlett-Packard® instrument	
each	26375,01
pk. of 5	26375,05
pk. of 25	26375,25
For Varian instrument	
each	26358,01
pk. of 5	26358,05
pk. of 25	26358,25

