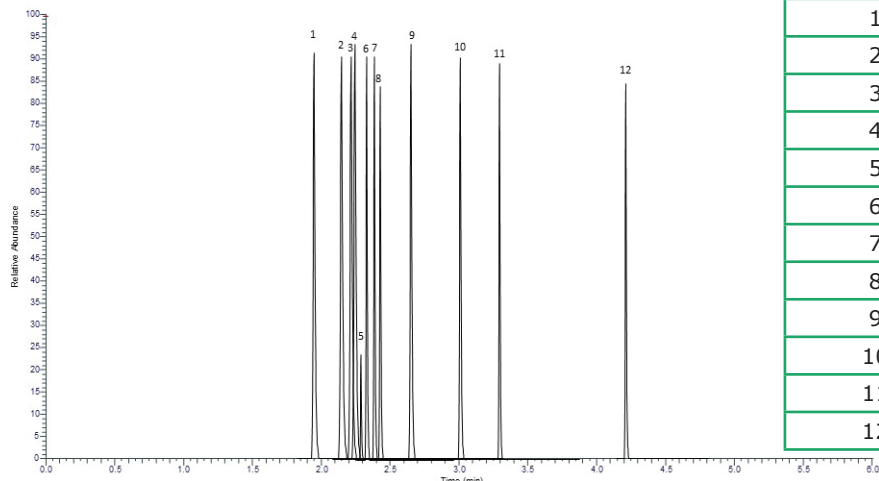


UHPLC/MS Analysis of SAMHSA 5 Panel on Ascentis Express Biphenyl, 2 μm



Peak Number	Compound	Concentration $\mu\text{g/mL}$
1	Morphine	5
2	Amphetamine	5
3	Methamphetamine	4.5
4	MDA	4.5
5	Phentermine	5
6	Codeine	5
7	6-MAM	5
8	MDMA	5
9	MDEA	5
10	Benzoylcegonine	6
11	PCP	4.5
12	THC-COOH	7

Conditions:

column:	Ascentis Express Biphenyl, 10 cm x 2.1 mm I.D., 2 μm
mobile phase:	[A] Water (0.1% v/v Formic Acid); [B] Acetonitrile (0.1% v/v Formic Acid)
gradient:	5% B to 98% B in 4.0 min; hold at 98% B for 2.0 min.
flow rate:	0.4 mL/min
column temp.:	40 $^{\circ}\text{C}$
detector:	MSD, ESI (+)
injection:	2 μL
sample:	drug panel, varied concentration, water

Description:

The 2 μm Ascentis Express Biphenyl is ideal for drug panels. Its aromatic properties give it increased polarity and improved selectivity of drug compounds compared to C18. This mix contains several commonly abused drugs and metabolites including opiates, cocaine, marijuana, amphetamines, and phencyclidine.



Materials:

Product Part Number	Description
M-030	Morphine
A-007	Amphetamine
M-022	Methamphetamine
M-012	MDA
P-023	Phentermine
C-006	Codeine
A-009	6-MAM
M-013	MDMA
M-065	MDEA
B-004	Benzoylcegonine
P-007	PCP
T-019	THC-COOH
5.33002	Formic acid 98% - 100%
900688	Methanol for UHPLC/MS
900682	Water for UHPLC/MS
584601-U	Ascentis Express 90 Å Biphenyl, 2 µm, 10 cm x 2.1 mm