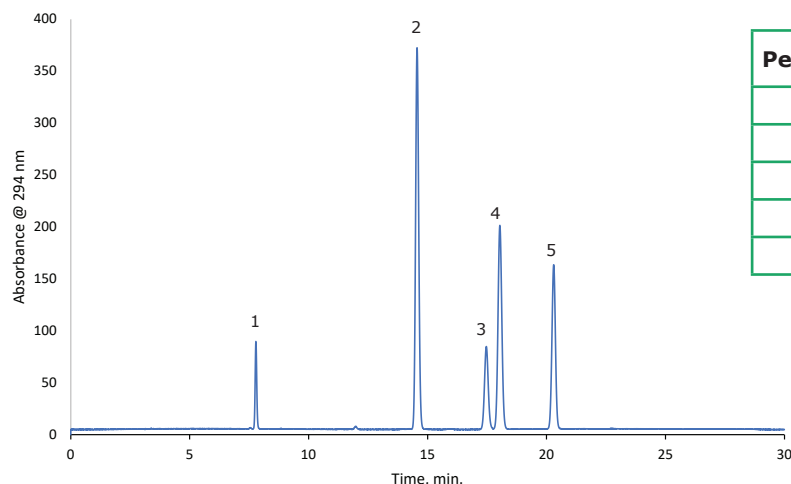


# UHPLC Analysis of Vitamin A and Vitamin E on Ascentis Express C30



Peak Number	Compound	Concentration mg/mL
1	Retinyl Acetate	0.1
2	$\delta$ - tocopherol	2.0
3	$\gamma$ - tocopherol	0.5
4	$\beta$ - tocopherol	5.0
5	$\alpha$ - tocopherol	1.5

## Conditions:

<b>column:</b>	Ascentis Express C30, 25 cm x 4.6 mm I.D., 2.7 $\mu$ m
<b>mobile phase:</b>	[A] Water; [B] Methanol
<b>gradient:</b>	Hold at 96% B for 13.0 min; 96% B to 100% B in 7.0 min; hold at 100% B for 4.0 min.
<b>flow rate:</b>	0.8 mL/min
<b>column temp.:</b>	20 °C
<b>detector:</b>	UV 294 nm
<b>injection:</b>	10 $\mu$ L
<b>sample:</b>	vitamin samples, varied concentration, 6:3:1 methanol:ethanol:hexane

## Description:

The 2.7  $\mu$ m Ascentis Express C30 is an ideal choice for the separation of vitamin A and the isomers of vitamin E. The shape selectivity of C30 allows for the separation of gamma tocopherol and beta tocopherol, which typically coelute on a C18 column. These vitamins occur naturally in many food products and are used to make various dietary supplements, so it is useful to be able to separate these isomers for quality control and analysis.

## Materials:

Product Part Number	Description
R4632	Retinyl Acetate
47784	$\delta$ - tocopherol
47785	$\gamma$ - tocopherol
46401-U	$\beta$ - tocopherol
47786	$\alpha$ - tocopherol
34860	Methanol
270733	Water
On Demand	Ascentis Express 160 Å C30, 2.7 $\mu$ m, 25 cm x 4.6 mm

The life science business of Merck KGaA, Darmstadt, Germany operates as MilliporeSigma in the U.S. and Canada.

[SigmaAldrich.com](http://SigmaAldrich.com)

© 2018 Merck KGaA, Darmstadt, Germany and/or its affiliates. All Rights Reserved. MilliporeSigma, Supelco, and the vibrant M are trademarks of Merck KGaA, Darmstadt, Germany or its affiliates. All other trademarks are the property of their respective owners. Detailed information on trademarks is available via publicly accessible resources. Lit. No. 1800000000 X00

**Supelco**  
Analytical Products