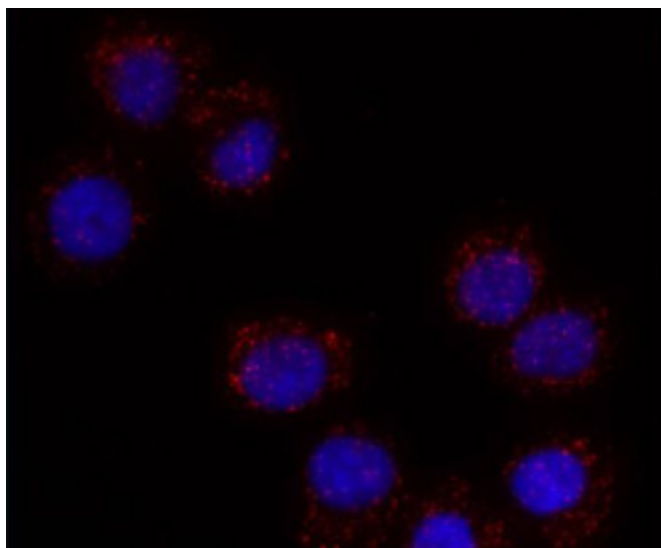


Duolink[®]

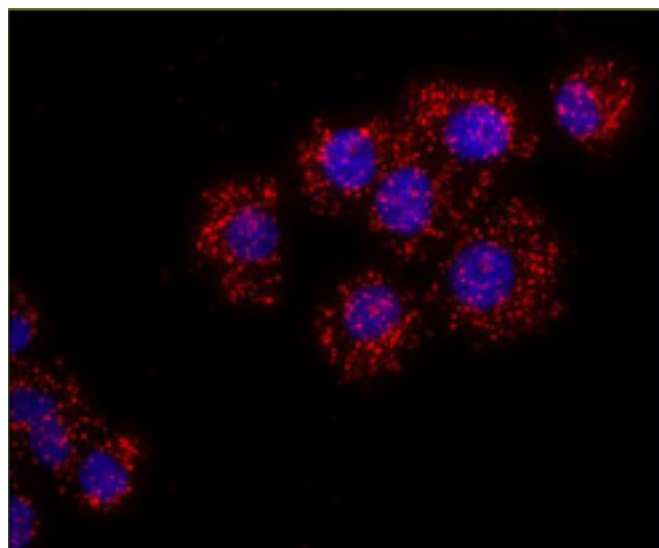
Rehybridization protocol for Duolink In Situ



Rehybridization with Duolink In Situ



Before rehybridization



After rehybridization

Protocol:

1. Warm the mounted glass slide at 65 °C for 1 min.
2. Remove the cover slip and spray/wash the glass slide with 70% ethanol.
3. Let the sample dry.
4. Add your Duolink In Situ Detection Reagent following the instructions in the Duolink In Situ User Manual, but do not add the polymerase.
5. Proceed with the Final Wash Step.
6. Mount the glass slide and proceed with imaging of your sample.

If you would like to receive additional information on Duolink, contact us at sigma-aldrich.com/duolink or call (800) 325-5832

©2014 Sigma-Aldrich Co. LLC. All rights reserved. SAFC, SIGMA and SIGMA-ALDRICH are trademarks of Sigma-Aldrich Co. LLC, registered in the US and other countries. Where bio begins is a trademark of Sigma-Aldrich Co. LLC. Duolink is a registered trademark of Olink AB. Figures and images are ©Olink AB and used with permission. Sigma brand products are sold by affiliated Sigma-Aldrich distributors. Purchaser must determine the suitability of the product(s) for their particular use. Additional terms and conditions may apply. Please see product information on the Sigma-Aldrich website at www.sigmaaldrich.com and/or on the reverse side of the invoice or packing slip.