

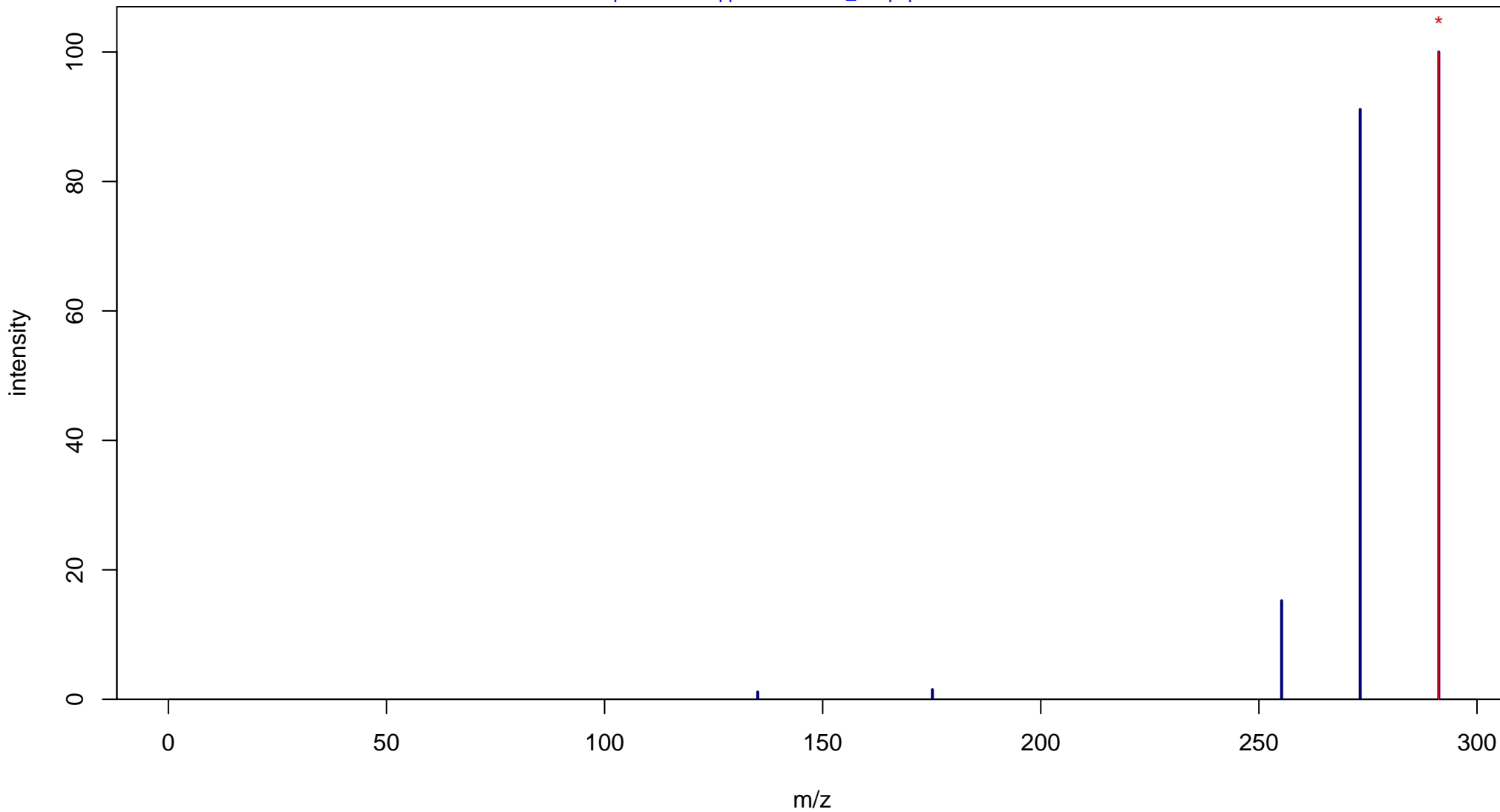
trans-Androsterone

Mass: 290.2246 Formula: C₁₉H₃₀O₂

mode: + collisionE: 0V

METLIN ID: 58004 SIGMA Prod: E3375

http://metlin.scripps.edu/metabo_info.php?molid=58004



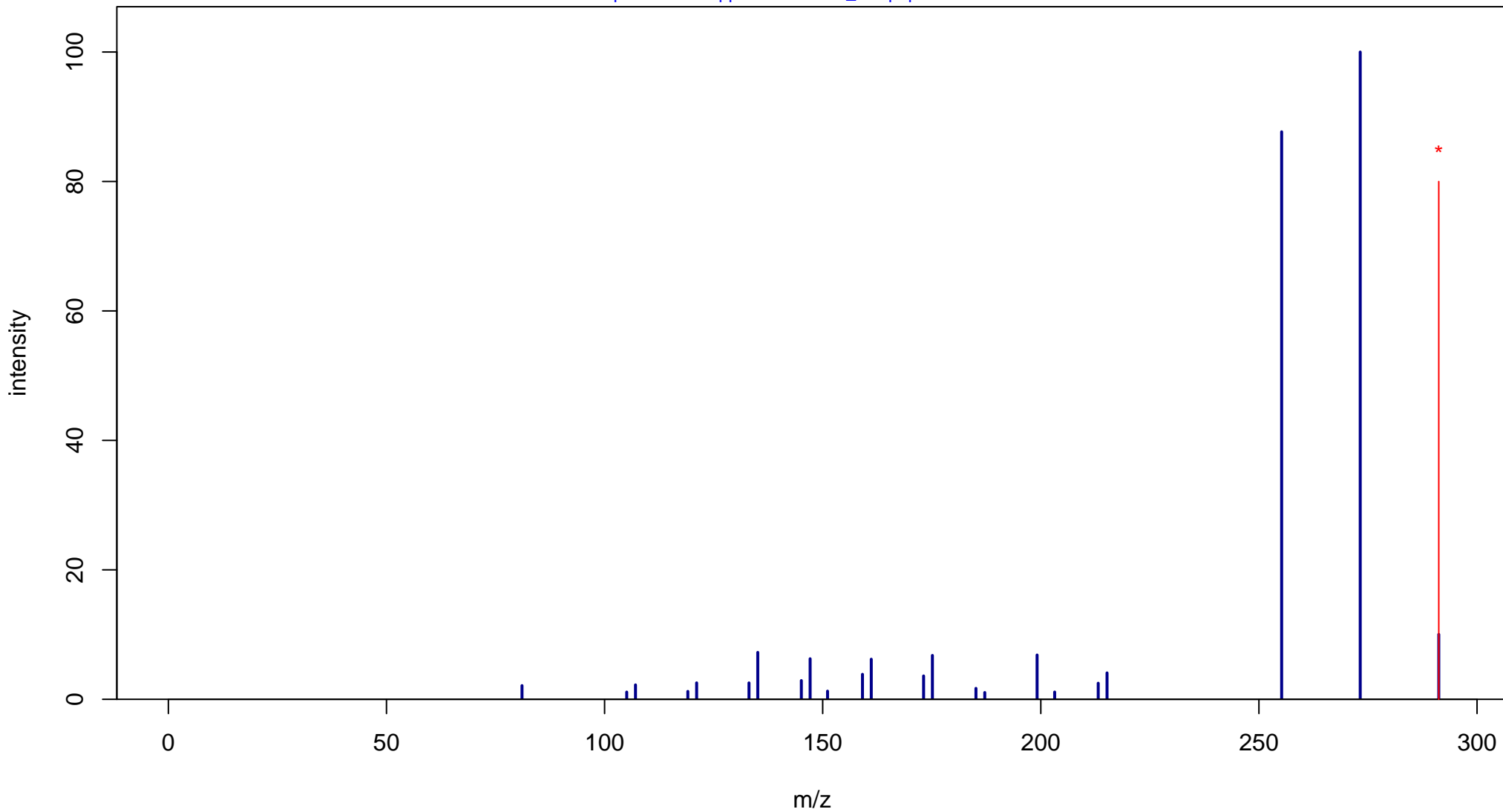
trans-Androsterone

Mass: 290.2246 Formula: C₁₉H₃₀O₂

mode: + collisionE: 10V

METLIN ID: 58004 SIGMA Prod: E3375

http://metlin.scripps.edu/metabo_info.php?molid=58004



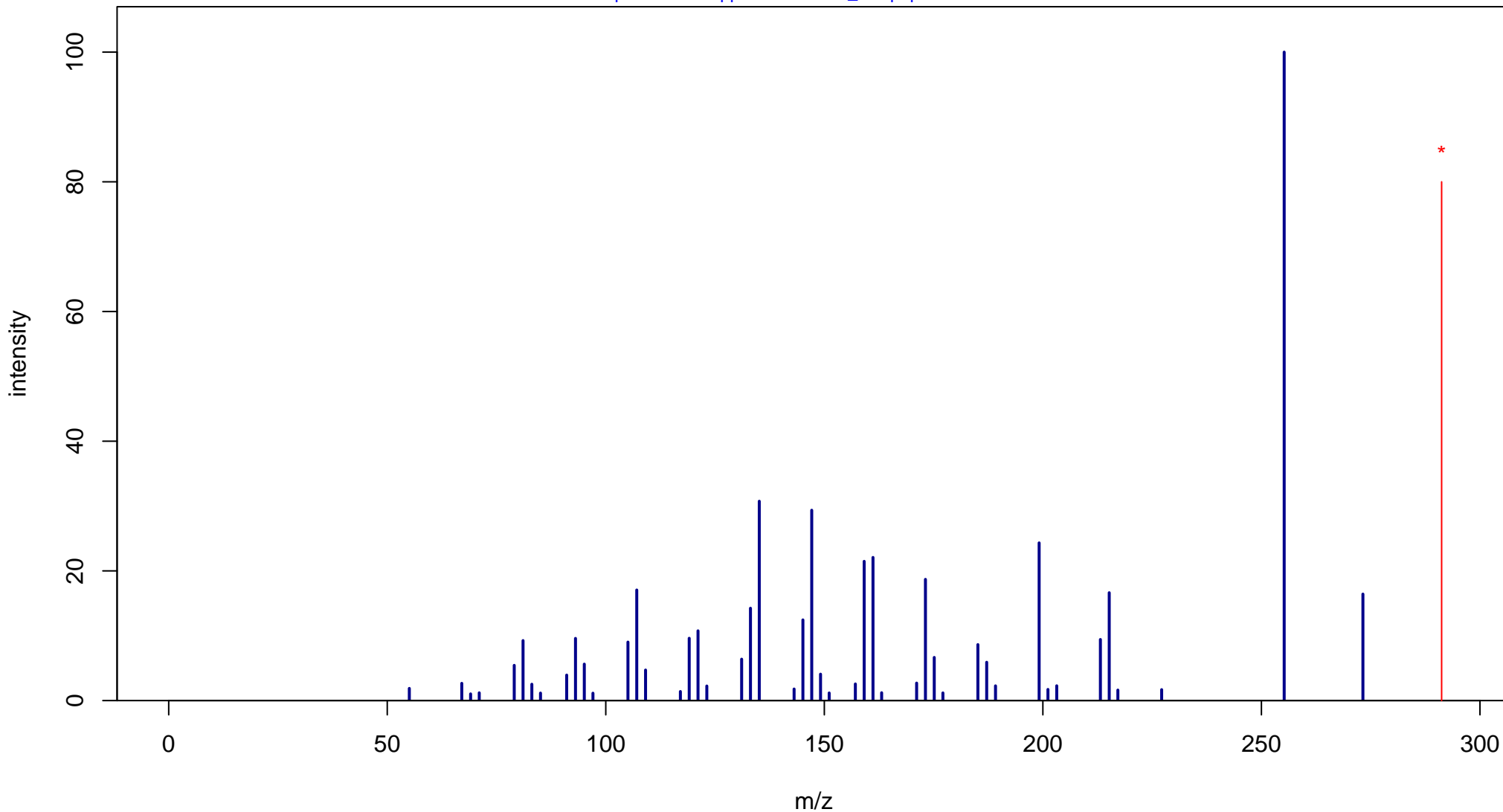
trans-Androsterone

Mass: 290.2246 Formula: C₁₉H₃₀O₂

mode: + collisionE: 20V

METLIN ID: 58004 SIGMA Prod: E3375

http://metlin.scripps.edu/metabo_info.php?molid=58004



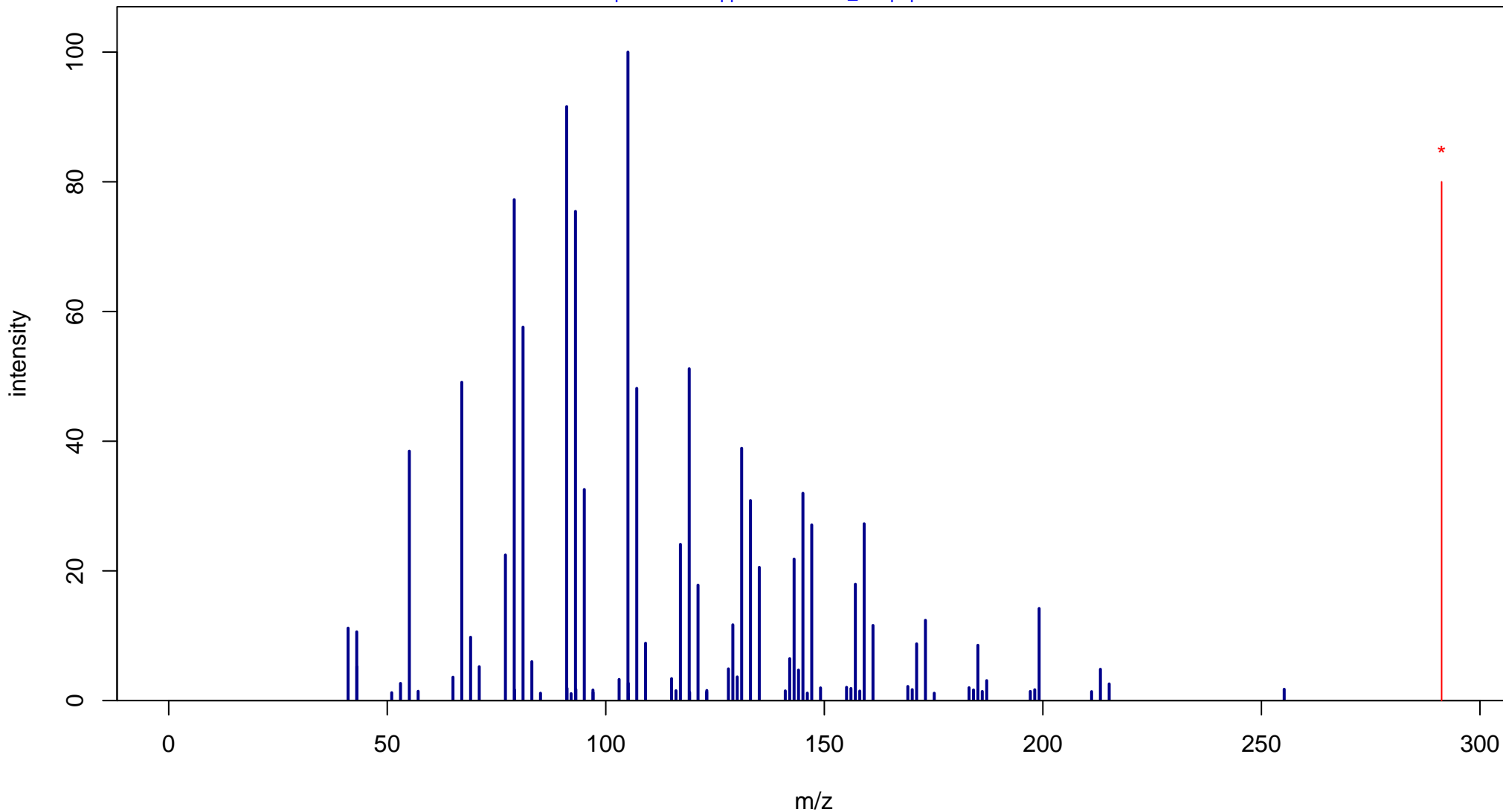
trans-Androsterone

Mass: 290.2246 Formula: C₁₉H₃₀O₂

mode: + collisionE: 40V

METLIN ID: 58004 SIGMA Prod: E3375

http://metlin.scripps.edu/metabo_info.php?molid=58004



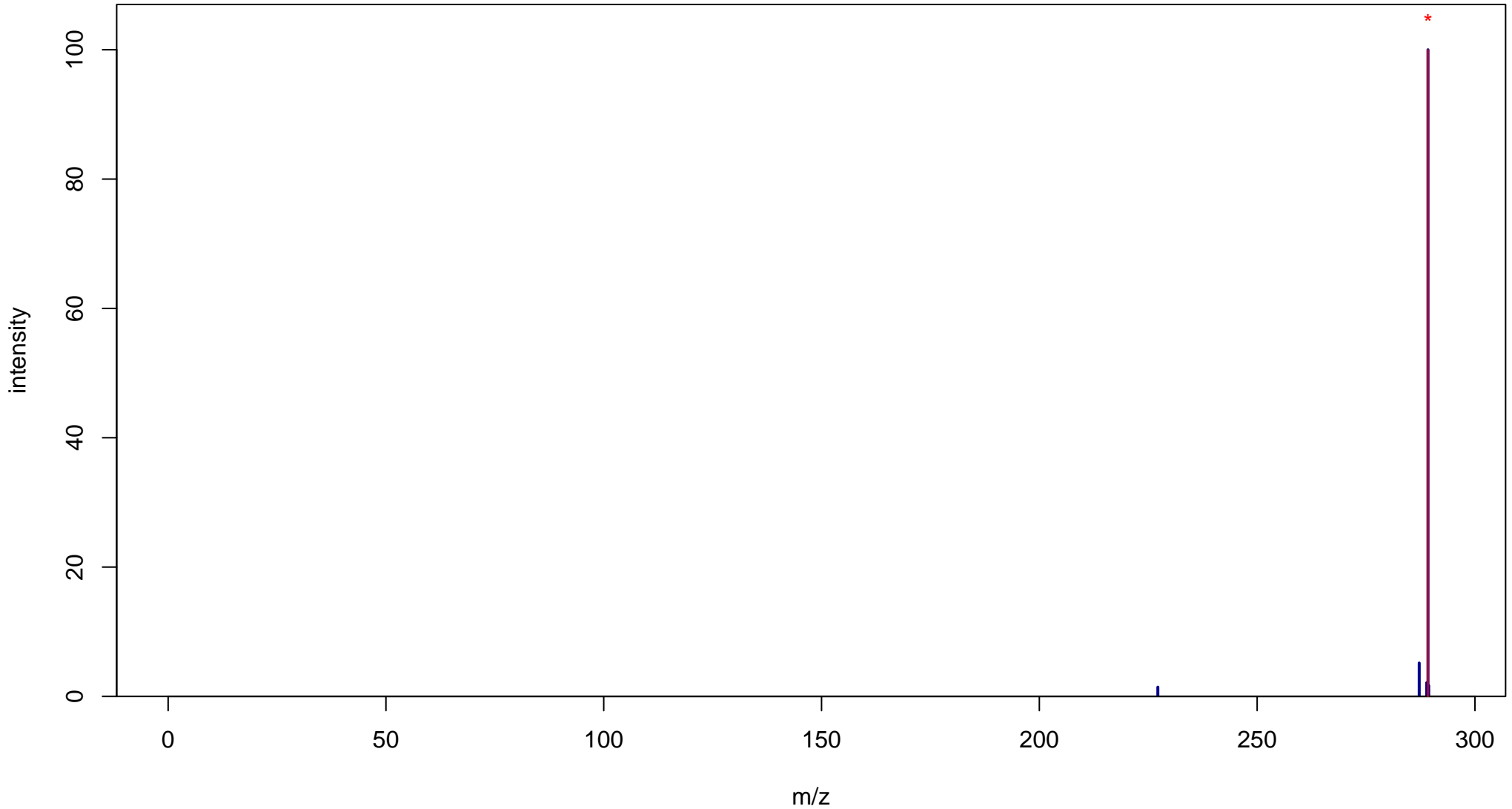
trans-Androsterone

Mass: 290.2246 Formula: C₁₉H₃₀O₂

mode: - collisionE: 0V

METLIN ID: 58004 SIGMA Prod: E3375

http://metlin.scripps.edu/metabo_info.php?molid=58004



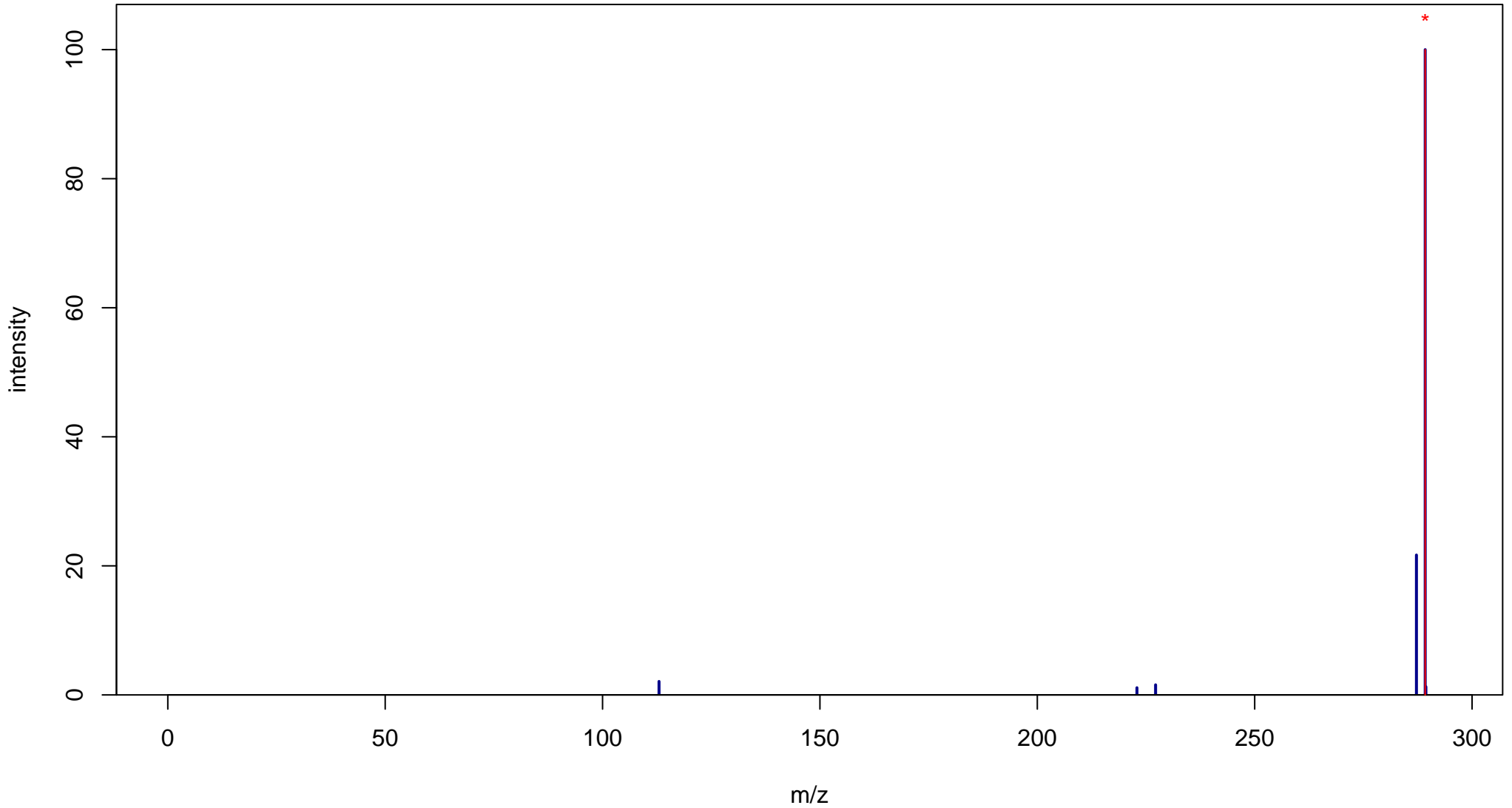
trans-Androsterone

Mass: 290.2246 Formula: C₁₉H₃₀O₂

mode: - collisionE: 10V

METLIN ID: 58004 SIGMA Prod: E3375

http://metlin.scripps.edu/metabo_info.php?molid=58004



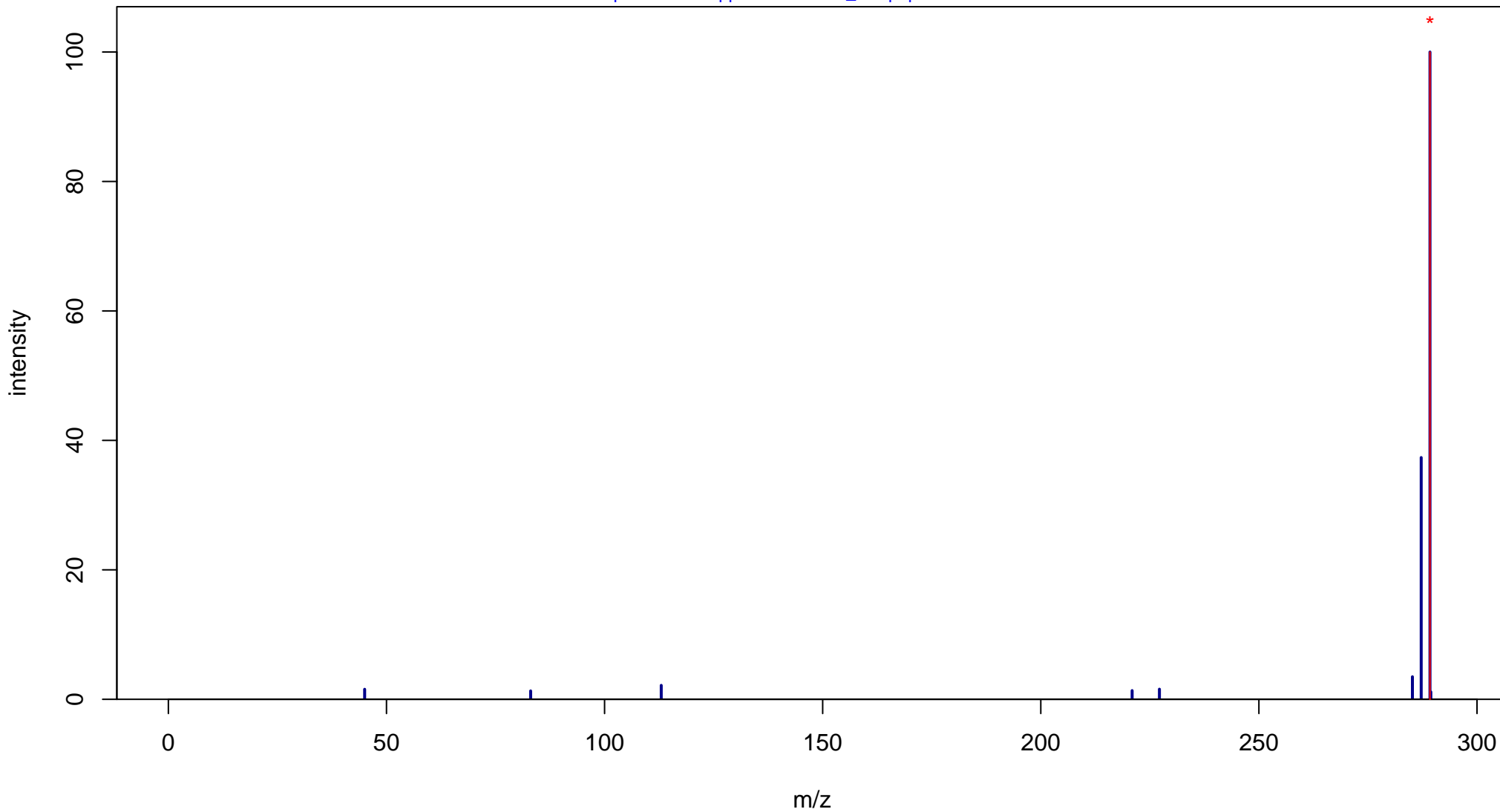
trans-Androsterone

Mass: 290.2246 Formula: C₁₉H₃₀O₂

mode: - collisionE: 20V

METLIN ID: 58004 SIGMA Prod: E3375

http://metlin.scripps.edu/metabo_info.php?molid=58004



trans-Androsterone

Mass: 290.2246 Formula: C₁₉H₃₀O₂

mode: - collisionE: 40V

METLIN ID: 58004 SIGMA Prod: E3375

http://metlin.scripps.edu/metabo_info.php?molid=58004

