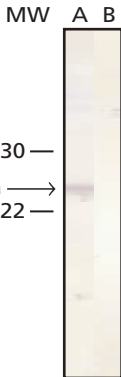


Monoclonal Anti-Cathepsin L, Clone 33/2 (C 2970)



Immunoblot

Whole cell extract of Mv 1 Lu cultured mink lung was separated on SDS-PAGE and blotted with Monoclonal Anti-Cathepsin L (Product No. C 2970). The antibody was developed with Goat Anti-Mouse IgG (Fab), AlkPhos Conjugate (Product No. A 1293) and NBT/BCIP substrate.

Lane A: Antibody dilution 1:400

Lane B: Negative control (only secondary antibody)