

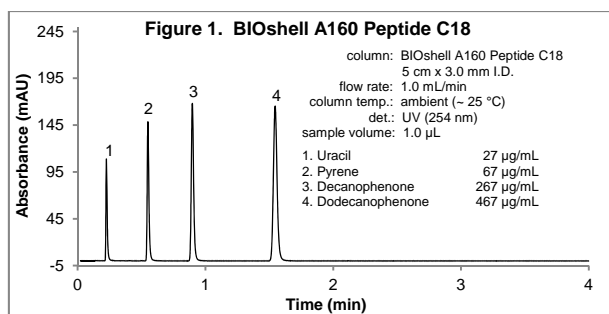
Care & Use Sheet for 2 µm BIOshell™ A160 Peptide C18 Column

Description

BIOshell A160 Peptide C18 is a high-speed, high-performance liquid chromatography column based on a new 2-micron 160 Å Fused-Core® particle design. The Fused-Core particle provides a thin, porous shell of high-purity silica surrounding a solid silica core. This particle design exhibits very high column efficiency for high MW solutes (up to 20 kDa) due to the shallow diffusion paths in the 0.4-micron thick porous shell and the small overall particle size of 2-microns. The non-end-capped, sterically protected diisobutyl-C18 bonded phase of BIOshell A160 Peptide C18 provides a stable, reversed-phase packing with a pore structure and pore size that is optimized for reversed-phase HPLC separations of peptides and polypeptides, using typical acidic mobile phases favored for protein structure-function and proteomic applications.

Column Characteristics

Figure 1 shows a sample Quality Control test chromatogram for a 5 cm x 3.0 mm I.D. column. A printed report including the actual QC test chromatogram and a Batch Quality Assurance Test using a peptide mixture are enclosed with every column. The Fused-Core particle has a surface area of ~ 65 m²/g and an average pore size of 160 Å. The Fused-Core particles are 30% to 60% heavier than commercially available totally porous particles due to the density of the solid cores. Therefore, the effective surface area per column is similar to columns packed with totally porous particles having surface areas of 150 - 200 m²/g.



Operation Guidelines

- The direction of flow is marked on the column label. Columns should NOT be operated in a reverse-flow direction. (See discussion in Column Care Section below.)
- A new column contains a mixture of acetonitrile and water. Initially, care should be taken to avoid mobile phases that are immiscible with this mixture or could cause precipitation.
- BIOshell A160 Peptide C18 columns are designed for low pH stability and have demonstrated stability using pH ~ 1 mobile phases at 60 °C. The columns will exhibit very long column life at 60 °C with intermediate pH mobile phases (up to pH 6). The maximum recommended temperature for operation at pH 6 - 8 is 40 °C for longest column life. Use above pH 8 is not recommended.
- BIOshell A160 Peptide C18 columns are stable to operating pressures up to 1000 bar (14,500 psi).
- Separations of complex peptide samples, such as tryptic digests of proteins, are typically accomplished using the BIOshell A160 Peptide C18 columns with gradient elution from 2% acetonitrile to 50% acetonitrile in the mobile phase. Although the column is compatible with 100% aqueous mobile phases, it is always advisable to check retention reproducibility of poorly retained (early eluting) sample components, when using very low organic content (<2%) at the start of a gradient.

Column Care

To maximize column life, ensure that samples and mobile phases are particle-free. The use of guard columns or an in-line filter with 0.5-micron porosity between the sample injector and the column is highly recommended. The 1-micron porosity frits on BIOshell A160 Peptide C18 columns are less subject to pluggage than are the 0.2-0.5-micron frits typically used with other small-particle columns, but these frits may allow a small number of packing particles to escape if the column is run in the reverse-flow direction. The column direction is indicated on the label and it should only be reverse flushed if other measures are not successful to remove inlet blockage. To remove strongly retained materials from the column, flush the column with very strong solvents such as 100% of the organic component of the mobile phase in use. A mixture (95/5 v/v) of dichloromethane and methanol is often effective at removing lipidic contaminants and certain detergents. Extreme cases may require the use of very strong solvents such as dimethylformamide (DMF) or dimethylsulfoxide (DMSO).

Column Storage

Long-term storage of silica-based, reversed-phase columns is best in 100% acetonitrile. Columns may be safely stored for short periods (up to 3 or 4 days) in most common mobile phases. However, when using buffers, it is best to remove the salts to protect

both the column and the HPLC equipment by flushing the column with the same mobile phase without the buffer. Before storing the column, the end-fittings should be tightly sealed with the end-plugs that were provided with the column.

Safety

- HPLC columns are for laboratory use only. Not for drug, household, or other use.**
- Users of HPLC columns should be aware of the toxicity or flammability of the mobile phases chosen for use with the columns. Precautions should be taken to avoid contact and leaks.
- HPLC columns should be used in well-ventilated environments to minimize concentration of solvent fumes.

Applications

The BIOshell A160 Peptide C18 columns are best utilized with mobile phases that are mixtures of acetonitrile and water or methanol and water. Higher levels of the organic solvent component will typically reduce the retention of the sample compounds. Using elevated temperatures (e.g., 40 - 60 °C) will reduce the viscosity of the mobile phase and allow the use of faster flow rates and lower column pressure for high sample throughput. Gradient-elution techniques using 5 -10% organic component as the initial mobile phase and increasing to 100% organic component as the final mobile phase often can affect separations of complex sample mixtures in minimal time.

Ionizable compounds, such as acids and bases, are generally best separated with mobile phases buffered at pH of 2 to 3. The use of 10-50 mM buffers is always recommended for optimum results and long-term stability when separating ionizable compounds. Additional information on solvent selection and separation techniques can be found in Chapters Six, Seven, Eight, and Eleven in *Practical HPLC Method Development*, Second Edition, L.R. Snyder, J.L. Glajch, and J.J. Kirkland, (John Wiley & Sons, 1997).

BIOshell A160 Peptide C18 columns utilize a sterically protected C18 bonded phase with extremely high resistance to acid-catalyzed hydrolysis of the siloxane bond that attaches the C18 chain to the surface. Thus, the combination of low pH and elevated temperature operation of the column is well tolerated. Peptide separations are efficiently conducted using low pH mobile phase modifiers, often at 0.01-0.1% concentration, most popularly employing trifluoroacetic acid (TFA), and the related perfluorocarboxylic acids, pentafluoropropionic acid (PFPA) and heptafluorobutyric acid (HFBA). These acids exhibit desirable low UV transparency, volatility, and peptide ion-pairing properties. Additional opportunities for low pH operation include the normal short chain carboxylic acids, formic acid and acetic acid, as well as mineral acids, such as phosphoric acid (0.001-0.02 M).

Guidelines for Low-Volume Columns

High performance columns with small internal volumes (shorter lengths, internal diameters <3 mm) are being increasingly used for high-speed separations, especially with mass spectrometers. These low-volume columns generate peaks having considerably less volume than those eluting from columns of larger dimensions (e.g., 15 cm x 4.6 mm). The efficiency of separations performed in low-volume columns is highly dependent on the HPLC system having components designed to minimize band spreading. All low-volume columns perform best when used with proper attention to the following factors:

- Detector** – Flow cell volumes should be <2 µL. To properly sense and integrate the very fast peaks that can elute from low-volume columns, the detector response time should be set to the fastest level (~ 0.1 second) to allow integration of signal by software of at least 20 points across the narrowest peak.
- Injector** – The injection system should be of a low-volume design (e.g., Rheodyne® Model 8125). Auto-samplers will often cause band-spreading, but may be used for convenience with the expectation of some loss in column efficiency.
- Connecting Tubing** – The shortest possible lengths of connecting tubing with small internal diameters (≤0.005-inch, 0.12 mm I.D.) must be used to connect the column to the injector and the detector cell.
- Peak Retention** – As retention is increased, the peak volume increases, decreasing extra-column band spreading caused by components of the instrument.
- Sample Injection** – For isocratic separations, the volume of sample injected should be kept as small as possible (≤2 µL) in a solvent weaker than the mobile phase. Sample volumes are less critical for gradient separations, and a larger volume is possible if the sample is dissolved in a weak solvent.

Ordering Information

For ordering information or for technical support on this product, visit the Sigma-Aldrich website at sigmaaldrich.com or contact the Sigma-Aldrich office or a designated distributor in your country.

Trademarks

BIOshell is a trademark of Sigma-Aldrich Co. LLC. Fused-Core is a registered trademark of Advanced Materials Technology, Inc. Rheodyne is a registered trademark of IDEX Health & Science, LLC