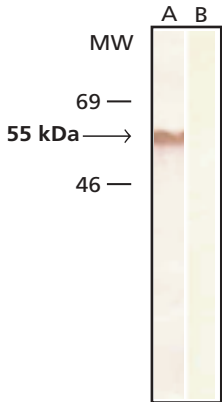


# Monoclonal Anti- $\beta$ -Tubulin, Clone TUB2.1 (T 4026)



## Immunoblot

Whole cell extract of chicken gizzard was separated on SDS-PAGE and blotted with Monoclonal Anti- $\beta$ -tubulin (Product No. T 4026). The antibody was developed with Goat anti-Mouse IgG, Peroxidase conjugate (Product No. A 9917) and AEC substrate.

Lane A: Antibody dilution 1:200

Lane B: Negative control (only secondary antibody)