

ReNcell™ VM Human Neural Progenitor Cell Line

Cell Line

Cat. # SCC008

Pack size: $\geq 1 \times 10^6$

viable cells/vial

Store in liquid nitrogen

FOR RESEARCH USE ONLY
NOT FOR USE IN DIAGNOSTIC PROCEDURES
NOT FOR HUMAN OR ANIMAL CONSUMPTION
THIS PRODUCT CONTAINS GENETICALLY MODIFIED ORGANISMS



Data Sheet

page 1 of 6

Description

ReNcell™ VM is an immortalized human neural progenitor cell line with the ability to readily differentiate into neurons and glial cells. ReNcell™ VM was derived from the ventral mesencephalon region of a human fetal brain tissue. Immortalized by retroviral transduction with the v-myc oncogene, this cell line grows rapidly as a monolayer on laminin with a doubling time of 20-30 hours. Karyotype analyses indicate that the ReNcell™ VM retains a normal diploid karyotype in culture even after prolonged passage (>45 passages). ReNcell™ VM was developed by the ReNeuron Group plc, a biotech company that specializes in using human somatic stem cells for therapeutics. In experiments performed by the ReNeuron Group plc, ReNcell™ VM can be differentiated in vitro to a high level of human dopaminergic neurons. Neurons differentiated from ReNcell™ VM have furthermore been shown to be electrophysiologically active. ReNcell™ VM may be used for a variety of research applications such as studies of neurotoxicity, neurogenesis, electrophysiology, neurotransmitter and receptor functions.

For Research Use Only; not for use in diagnostic procedures. ReNcell™ Immortalized Cells have been isolated in a legal and ethical manner compliant with local informed consent procedures. This product contains genetically modified organisms.

KIT CONTENTS:

- $\geq 1 \times 10^6$ viable ReNcell™ VM cells: (Millipore Cat. No. SCC008) derived from 10-week human ventral mesencephalon brain tissue, cryopreserved. Store in liquid nitrogen.

CHARACTERIZATION OF CELLS:

Each lot of ReNcell™ VM cells has been validated for high level of expression of Nestin and Sox 2 and for their self-renewal and multi-lineage differentiation capacities (please refer to datasheet figures). Cells also display normal karyotype as assessed by chromosome spread and tested negative for mycoplasma.

STORAGE:

When stored at the recommended storage conditions (liquid nitrogen), ReNcell™ VM cells are stable up to the expiration date. Do not expose to elevated temperatures. Discard any remaining reagents after the expiration date. We recommend that the cells be used within ten passages.

SPECIES LEGEND: H Human Ca Canine M Mouse R Rat Rb Rabbit B Bovine P Porcine WR Most Common Vertebrates

Please visit www.millipore.com for additional product information and references.

Submit your published journal article, and earn credit toward future purchases. Visit www.millipore.com/publicationrewards to learn more!

MATERIALS REQUIRED BUT NOT SUPPLIED:

1. ReNcell™ NSC Maintenance Medium (Millipore Cat. No. SCM005)
2. ReNcell™ NSC Freezing Medium (Millipore Cat. No. SCM007)
3. Basic fibroblast growth factor (bFGF; FGF-2; Specific Activity > 2 X 10⁶ Units/mg. Millipore Cat. No. GF003)
4. Epidermal growth factor (EGF; Specific Activity > 1 x 10⁷ Units/mg; Millipore Cat. No. GF001)
5. Laminin (Millipore Catalog No. CC095)
6. DMEM/F12 w/o HEPES, w/ L-Glutamine (Millipore Cat. No. DF-042-B)
7. Accutase™ (Millipore Cat. No. SCR005)
8. Tissue culture-ware
9. Phosphate-Buffered Saline (1X PBS) (Millipore Cat. No. BSS-1005-B)
10. Fixative (e.g. 4% Paraformaldehyde in 1X PBS)
11. Blocking Solution (5% normal donkey serum, 0.3% Triton X-100 in 1X PBS)
12. Primary and secondary antibodies
13. 4'-6-Diamidino-2-phenylindole (DAPI) / PBS solution
14. Anti-fading mounting solution (DABCO/PVA)
15. Hemacytometer
16. Microscope

PREPARATION OF COATED FLASKS:

We recommend coating tissue culture plastic- or glasswares that are used to culture ReNcell™ CX cells with laminin. Tissue culture flasks should be coated on the same day that the ReNcell™ CX cells are thawed from liquid nitrogen or on the same day that the cells need to be passage. The following procedure is recommended:

1. Thaw the laminin in the morning at 2-8°C. Dilute laminin with DMEM/F12 (Millipore Cat. No. DF-042-B) to 20 µg/mL.
2. Add enough of the diluted laminin solution to cover the whole surface of the tissue culture-ware. Use 3 mL volume for 6-cm plates and 6.5 mL volume for 10-cm plates and T75 flasks. Incubate in a 37°C, 5% CO₂ incubator for at least 4 hours.
3. Just before use, aspirate the laminin solution in the coated flasks and rinse the flasks once with 1X PBS.
4. Prepare the Complete ReNcell™ NSC Medium by adding 20 ng/mL FGF-2 and 20 ng/mL EGF (final concentrations) to ReNcell™ NSC Maintenance Medium (Millipore Cat. No. SCM005).
5. Add 10 mL of the freshly made Complete ReNcell™ NSC Medium to the laminin-coated T75 flasks. Incubate in a 37°C, 5% CO₂ incubator. The laminin-coated flasks are now ready to receive the cells.

THAWING OF CELLS:

1. Do not thaw the cells until the recommended medium and appropriately coated laminin plasticware and/or glassware are on hand.
2. Remove the vial of ReNcell™ CX cells from liquid nitrogen and incubate in a 37°C water bath. Closely monitor until the cells are completely thawed. Maximum cell viability is dependent on the rapid and complete thawing of frozen cells. **IMPORTANT: Do not vortex the cells.**
3. As soon as the cells are completely thawed, disinfect the outside of the vial with 70% ethanol. Proceed immediately to the next step.
4. In a laminar flow hood, use a 1 or 2 mL pipette to transfer the cells to a sterile 15 mL conical tube. Be careful to not introduce any bubbles during the transfer process.
5. Using a 10mL pipette, slowly add dropwise 9 mL of ReNcell™ NSC Maintenance Medium (Millipore Cat. No. SCM005) (pre-warmed to 37°C) to the 15mL conical tube. **IMPORTANT: Do not add the whole volume of medium at once to the cells. This may result in decreased cell viability due to osmotic shock.**
6. Gently mix the cell suspension by slow pipeting up and down twice. Be careful to not introduce any bubbles. **IMPORTANT: Do not vortex the cells.**
7. Centrifuge the tube at 300 x g for 3-5 minutes to pellet the cells.
8. Decant as much of the supernatant as possible. Steps 4-8 are necessary to remove residual cryopreservative (DMSO).
9. Resuspend the cells in a total volume of 5 mL of ReNcell™ NSC Maintenance Medium (Millipore Cat. No. SCM005) (pre-warmed to 37°C) containing freshly added 20 ng/mL FGF-2 and 20 ng/mL EGF.
Note: FGF-2 and EGF should always be added fresh to the ReNcell™ NSC Maintenance Medium.
10. Plate the cell mixture onto the laminin-coated T75 tissue culture flask that was pre-incubated in the 37°C incubator. The laminin coated T75 flask should already have 10mL of Complete ReNcell™ NSC Medium (i.e. ReNcell™ NSC Maintenance Medium containing 20 ng/mL FGF-2 and 20 ng/mL EGF).
11. Incubate the cells at 37°C in a 5% CO₂ humidified incubator.
12. The next day, exchange the medium with fresh ReNcell™ NSC Maintenance Medium (Millipore Cat. No. SCM005) (pre-warmed to 37°C) containing 20 ng/mL FGF-2 and 20 ng/mL EGF. Exchange with fresh medium containing FGF-2 and EGF every other day thereafter.
13. When the cells are approximately 80% confluent, they can be dissociated with Accutase™ and passaged or alternatively frozen for later use.

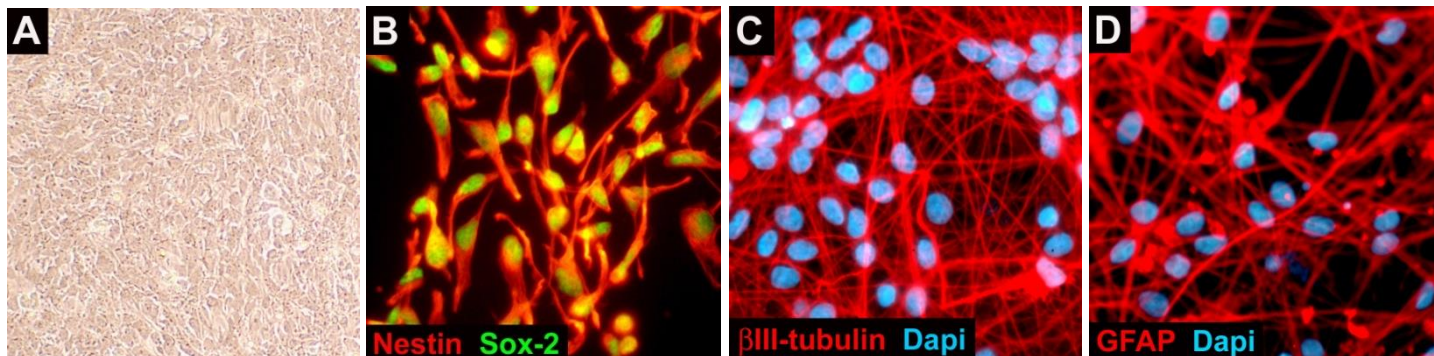
SUBCULTURING:

1. Prepare fresh laminin-coated flasks (refer to Preparation of Coated Flasks).
2. Carefully remove the medium from the laminin-coated T75 flasks containing the confluent layer of ReNcell™ CX cells.
3. Rinse the flask once with 1X PBS. Note: Add the PBS slowly from the side to avoid detaching the cells.
4. Aspirate the PBS.
5. Apply 3-5 mL of Accutase™ and incubate in a 37°C incubator for 3-5 minutes.
6. Inspect the plate and ensure the complete detachment of cells by gently tapping the side of the flask with the palm of your hand.
7. Apply 5 mL of ReNcell™ NSC Maintenance Medium (Millipore Cat. No. SCM005) (pre-warmed to 37°C) to the flask.
8. Gently rotate the flask to mix the cell suspension. Transfer the dissociated cells to a 15mL conical tube.
9. Centrifuge the tube at 300 x g for 3-5 minutes to pellet the cells.
10. Discard the supernatant.
11. Apply 2 mL of ReNcell™ NSC Maintenance Medium (Millipore Cat. No. SCM005) containing 20 ng/mL FGF-2 and 20 ng/mL EGF to the conical tube and resuspend the cells thoroughly. Note: Do not vortex the cells.
12. Count the number of cells using a hemacytometer.
13. Plate the cells to the desired density into the appropriate fresh laminin-coated flasks, plates or wells in ReNcell™ NSC Maintenance Medium (Millipore Cat. No. SCM005) containing 20 ng/mL FGF-2 and 20 ng/mL EGF. We typically plated the cells at ~1.5 million cells on laminin coated T75 flasks.
14. The next day, exchange the medium with fresh ReNcell™ NSC Maintenance Medium (Millipore Cat. No. SCM005) containing 20 ng/mL FGF-2 and 20 ng/mL EGF. Exchange with fresh medium containing FGF-2 and EGF every other day thereafter. The cells should be ready for passaging or harvesting 2 to 3 days after this step.

DIFFERENTIATION (FOR 8-WELL CHAMBER SLIDES):

1. The 8-well chamber slides should be coated with 20 µg/mL laminin (please refer to the section on Preparation of Coated Flasks).
2. Plate out 30,000 cells per well into an appropriately coated 8-well chamber slide in ReNcell™ NSC Maintenance Medium (Millipore Cat. No. SCM005) containing 20 ng/mL FGF-2 and 20 ng/mL EGF. Total volume per well = 0.5 – 0.75 mL. At this density the cells should be ~50% - 60% confluent by the next day. Note: To prevent overgrowth of the cells by the end of the two-week differentiation protocol, it is best to avoid plating too many cells.
3. The next day, initiate differentiation by removing the medium from each well and replacing with fresh ReNcell™ NSC Maintenance Medium (Millipore Cat. No. SCM005) that does not contain FGF-2 and EGF. **Note: Differentiation is initiated by withdrawing the growth factors so FGF or EGF should not be added to the basal medium.**
4. Replace with fresh ReNcell™ NSC Maintenance Medium (Millipore Cat. No. SCM005) every 2-3 days for two weeks. Note: It is important that FGF or EGF not be present in the basal medium.
5. After two weeks, the cells can be fixed with 4% paraformaldehyde and stained with the desired antibodies.

CHARACTERIZATION OF ReNcell™ VM IMMORTALIZED CELL LINE (SCC008):



ReNcell™ VM cells (Millipore Cat. No. SCC008) are grown as monolayers (A) and express NSC markers, Nestin (B, red) and Sox-2 (B, green). ReNcell™ VM cells are able to differentiate into neurons (β III-tubulin; C) and glial cells (GFAP; D).

■ antibodies ■ Multiplex products ■ biotools ■ cell culture ■ enzymes ■ kits ■ proteins/peptides ■ siRNA/cDNA products

Please visit www.millipore.com for additional product information, test data and references

EMD Millipore Corporation, 28820 Single Oak Drive, Temecula, CA 92590, USA 1-800-437-7500

Technical Support: T: 1-800-MILLIPORE (1-800-645-5476) • F: 1-800-437-7502

FOR RESEARCH USE ONLY. Not for use in diagnostic procedures. Not for human or animal consumption. Purchase of this Product does not include any right to resell or transfer, either as a stand-alone product or as a component of another product. Any use of this Product for purposes other than research is strictly prohibited.

Millipore®, the M mark, Upstate®, Chemicon®, Linco® and all other trademarks, unless specifically identified above in the text as belonging to a third party, are owned by Merck KGaA, Darmstadt. Copyright ©2008-2018 Merck KGaA, Darmstadt. All rights reserved.



We Buy 100% Certified Renewable Energy

ACADEMIC USE AGREEMENT **(subject to local law)**

THIS PRODUCT IS SUBJECT TO CERTAIN PATENTS OR PATENT APPLICATIONS LICENSED TO EMD MILLIPORE. THIS PRODUCT MAY ONLY BE USED BY INDIVIDUALS EMPLOYED BY AN ACADEMIC INSTITUTION AND IS INTENDED SOLELY TO BE USED FOR ACADEMIC RESEARCH, WHICH IS FURTHER DEFINED BELOW. BY OPENING THIS PRODUCT, YOU (“PURCHASER”) HEREBY REPRESENT THAT YOU HAVE THE RIGHT AND AUTHORITY TO LEGALLY BIND YOURSELF AND/OR YOUR EMPLOYER INSTITUTION, AS APPLICABLE, AND CONSENT TO BE LEGALLY BOUND BY THE TERMS OF THIS ACADEMIC USE AGREEMENT. IF YOU DO NOT AGREE TO COMPLY WITH THESE TERMS, YOU MAY NOT OPEN OR USE THE PRODUCT AND YOU MUST CALL EMD MILLIPORE (“SELLER”) CUSTOMER SERVICE (1-800-645-5476) TO ARRANGE TO RETURN THE PRODUCT FOR A REFUND.

“Product” means ReNcell™ VM Human Neural Progenitor Cell Line (SCC008)

“Academic Research” means any internal *in vitro* research use by individuals employed by an academic institution. Academic Research specifically excludes the following uses of whatever kind or nature:

- Re-engineering or copying the Product
- Making derivatives, modifications, or functional equivalents of the Product
- Obtaining patents or other intellectual property rights claiming use of the Product
- Using the Product in the development, testing, or manufacture of a Commercial Product
- Using the Product as a component of a Commercial Product
- Reselling or licensing the Product
- Using the Product in clinical or therapeutic applications including producing materials for clinical trials
- Administering the Product to humans
- Using the Product in collaboration with a commercial or non-academic entity
- Using the Product *in vivo*
- Transferring the Product to a third party

“Commercial Product” means any product intended for: (i) current or future sale; (ii) use in a fee-for-service; or (iii) any diagnostic, clinical, or therapeutic use.

Access to the Product is limited solely to those officers, employees, and students of PURCHASER’s academic institution who need access to the Product to perform Academic Research. The purchase of the Product includes the non-transferable right of PURCHASER to use the purchased amount of the Product and components of the Product for research use only conducted by PURCHASER. PURCHASER shall comply with all applicable laws in its use and handling of the Product and shall keep it under reasonably safe and secure conditions to prevent unauthorized use or access.

These use restrictions will remain in effect for as long as PURCHASER possesses the Product.

COMMERCIAL OR NON-ACADEMIC ENTITIES INTERESTED IN PURCHASING OR USING THE PRODUCT MUST CONTACT licensing@emdmillipore.com AND AGREE TO SEPARATE TERMS OF USE PRIOR TO USE OR PURCHASE.

■ antibodies ■ Multiplex products ■ biotools ■ cell culture ■ enzymes ■ kits ■ proteins/peptides ■ siRNA/cDNA products

Please visit www.millipore.com for additional product information, test data and references

EMD Millipore Corporation, 28820 Single Oak Drive, Temecula, CA 92590, USA 1-800-437-7500

Technical Support: T: 1-800-MILLIPORE (1-800-645-5476) • F: 1-800-437-7502

FOR RESEARCH USE ONLY. Not for use in diagnostic procedures. Not for human or animal consumption. Purchase of this Product does not include any right to resell or transfer, either as a stand-alone product or as a component of another product. Any use of this Product for purposes other than research is strictly prohibited.

Millipore®, the M mark, Upstate®, Chemicon®, Linco® and all other trademarks, unless specifically identified above in the text as belonging to a third party, are owned by Merck KGaA, Darmstadt. Copyright ©2008-2018 Merck KGaA, Darmstadt. All rights reserved.



We Buy 100% Certified
Renewable Energy

GMO

This product contains genetically modified organisms.
Este producto contiene organismos genéticamente modificados.
Questo prodotto contiene degli organismi geneticamente modificati.
Dieses Produkt enthält genetisch modifizierte Organismen.
Ce produit contient des organismes génétiquement modifiés.
Dit product bevat genetisch gewijzigde organismen.
Tämä tuote sisältää geneettisesti muutettuja organismeja.
Denna produkt innehåller genetiskt ändrade organismer.

■ antibodies ■ Multiplex products ■ biotools ■ cell culture ■ enzymes ■ kits ■ proteins/peptides ■ siRNA/cDNA products

Please visit www.millipore.com for additional product information, test data and references

EMD Millipore Corporation, 28820 Single Oak Drive, Temecula, CA 92590, USA 1-800-437-7500

Technical Support: T: 1-800-MILLIPORE (1-800-645-5476) • F: 1-800-437-7502

FOR RESEARCH USE ONLY. Not for use in diagnostic procedures. Not for human or animal consumption. Purchase of this Product does not include any right to resell or transfer, either as a stand-alone product or as a component of another product. Any use of this Product for purposes other than research is strictly prohibited.

Millipore®, the M mark, Upstate®, Chemicon®, Linco® and all other trademarks, unless specifically identified above in the text as belonging to a third party, are owned by Merck KGaA, Darmstadt. Copyright ©2008-2018 Merck KGaA, Darmstadt. All rights reserved.



We Buy 100% Certified
Renewable Energy