

## User Guide

# MILLIPLEX® Ras-Raf Oncoprotein Panel 6-Plex Magnetic Bead Kit

## 96-Well Plate

### 48-684MAG

Introduction .....	2	Washing Note .....	15
Principle .....	3	Equipment Settings .....	16
Storage Conditions Upon Receipt ...	4	Supplemental Protocol .....	17
Reagents Supplied .....	5	Representative Data .....	18
Materials Required (not included) ..	6	Troubleshooting .....	19
Safety Precautions .....	8	Product Ordering .....	22
Symbol Definitions .....	8	Well Map .....	23
Technical Guidelines .....	9	Notice .....	24
Sample Collection and Storage ....	10	Contact Information .....	24
Preparation of Reagents for		Technical Assistance .....	24
Immunoassay .....	12	Standard Warranty .....	24
		Safety Data Sheets (SDS) .....	24
Immunoassay Protocol (96-well Plate and Handheld Magnetic Separation Block) .....	14		

## Introduction

Ras proteins are GTPases encoded by three genes: *HRAS*, *KRAS*, and *NRAS*. The protein products of these genes exhibit a high degree of sequence identity and are regulated by a conserved mechanism: exchange of GDP for GTP switches the Ras protein into an active conformation. In its GTP-bound state, Ras has high affinity for its downstream effectors, including the Raf family of protein kinases (ARAF, BRAF, and CRAF/RAF1). Raf proteins, in turn, signal through MEK to activate the MAPK pathway. In healthy cells, Ras activation is a transient response to extracellular growth stimuli and is restricted by the rapid conversion of Ras-GTP back to Ras-GDP. However, the Ras-Raf-MEK pathway is often aberrantly activated in cancer. Mutations in the *RAS* genes are amongst the most frequent oncogenic events, occurring in ~25% of human cancers, with mutations altering the 12<sup>th</sup> amino acid (glycine) being particularly prevalent. These driver mutations maintain Ras in a constitutively active, GTP-bound state. Additionally, certain cancers feature *KRAS* gene amplification, although the effects of gene amplification on protein expression are not yet well-characterized. The Ras-Raf-MEK pathway can also be activated downstream of Ras. *BRAF* is another well-established oncogene, with the *BRAF V600E* mutation being prevalent in melanoma. While targeting this BRAF oncoprotein has had therapeutic efficacy, treating cancers driven by Ras oncoproteins remains an urgent unmet clinical need.

In addition to the relevance of the Ras-Raf-MEK pathway in precision oncology, measurement of these proteins is integral to many experimental workflows. Ectopic expression of Ras oncoproteins has become a mainstay of cancer biology research, presenting a need for research tools to verify oncogene expression and efficiently characterize downstream signaling. The MILLIPLEX<sup>®</sup> Ras-Raf Oncoprotein Magnetic Bead Panel 6-plex allows researchers to analyze this pathway via multiplex detection of Ras, the 2 most common Ras oncoproteins, and phosphoproteins downstream of Ras, in cell line models and tissue lysates.

The MILLIPLEX<sup>®</sup> portfolio offers the broadest selection of analytes across a wide range of pathways. Once the panel of interest has been identified, you can rely on the quality we build into each kit to produce results you can trust. Performance criteria evaluated during the verification process include: cross-reactivity, assay CVs, kit stability, and sample behavior. In addition, each kit meets stringent Quality Control criteria to ensure lot-to-lot reproducibility.

Each MILLIPLEX<sup>®</sup> cell signaling panel includes:

- Stimulated and unstimulated cell lysates provided to qualify assay performance
- Premixed magnetic beads to capture analytes of interest
- Optimized detection antibody cocktails designed to yield consistent analyte profiles within a panel

The MILLIPLEX® Ras-Raf Oncoprotein Magnetic Bead Panel 6-plex is used to detect changes in phosphorylated BRAF (Ser446), CRAF (Ser338), and MEK1 (Ser217/Ser221), as well as total protein levels of Ras and the oncogenic mutant Ras proteins, RasG12D and RasG12V, in cell lysates using the Luminex® system. The assays for total Ras, RasG12D, and RasG12V detect H-Ras, N-Ras, and K-Ras protein. Two lyophilized cell lysates are included as controls in the Ras-Raf Oncoprotein kit: THP-1 cells possess an *NRAS* mutation resulting in the production of a RasG12D oncoprotein, whereas COR-L23 cells contain a *KRAS* mutation resulting in the expression of a RasG12V oncoprotein. The detection assay is a rapid, convenient alternative to Western Blotting and immunoprecipitation procedures. Each kit has sufficient reagents for one 96-well plate assay.

**For research use only. Not for use in diagnostic procedures.**

**Please read entire protocol before use.**

**It is important to use same assay incubation conditions throughout your study.**

## Principle

MILLIPLEX® products are based on the Luminex® xMAP® technology — one of the most respected multiplex technologies available. This technology finds applications throughout the life sciences and enables a variety of bioassays, including immunoassays, on the surface of fluorescent-coded magnetic bead (MagPlex®-C and non-magnetic bead (MicroPlex®) microspheres.

- Luminex® products use proprietary techniques to internally color-code microspheres with multiple fluorescent dyes. Through precise concentrations of these dyes, distinctly colored bead sets of 500-5.6 µm non-magnetic or 80-6.45 µm magnetic polystyrene microspheres can be created, each of which is coated with a specific capture antibody.
- After an analyte from a test sample is captured by the bead, a biotinylated detection antibody is introduced.
- The reaction mixture is then incubated with Streptavidin-PE conjugate, the reporter molecule, to complete the reaction on the surface of each microsphere.
- The microspheres are illuminated, and the internal dyes fluoresce, marking the microsphere set(s) used in a particular assay. A second illumination source excites PE, the fluorescent dye on the reporter molecule.
- Finally, high-speed digital-signal processors identify each individual microsphere and quantify the result of its bioassay based on fluorescent reporter signals.

The capability of adding multiple conjugated beads to each sample results in the ability to obtain multiple results from each sample. Open-architecture xMAP® technology enables multiplexing of many types of bioassays reducing time, labor and costs over traditional methods.

---

## Storage Conditions Upon Receipt

- Recommended storage for kit components is 2–8 °C.
- Once the control lysates have been reconstituted, immediately transfer contents into polypropylene vials. **DO NOT STORE RECONSTITUTED CONTROLS IN LYOPHILIZATION VIALS.** For long-term storage, freeze reconstituted standards and controls at  $\leq -70$  °C. Aliquot if needed. Avoid freeze/thaw cycles.
- **DO NOT FREEZE** Antibody-Immobilized Beads, Detection Antibody, and Streptavidin-Phycoerythrin.

## Reagents Supplied

<b>Reagents</b>	<b>Volume</b>	<b>Quantity</b>	<b>Cat. No.</b>
MILLIPLEX® 6-plex Ras-Raf Oncoprotein Panel, Magnetic Beads (20X)	180 µL	1 tube	42-684MAG
MILLIPLEX® 6-plex Ras-Raf Oncoprotein Panel, Biotin (20X) (Detection Antibody)	180 µL	1 tube	44-684KMG
MILLIPLEX® Lysis Buffer	55 mL	1 bottle	43-040
MILLIPLEX® Assay Buffer 2	55 mL	1 bottle	43-041
MILLIPLEX® COR-L23 Cell Lysate: Serum	-	1 vial	47-318
MILLIPLEX® THP-1 Cell Lysate: Serum	-	1 vial	47-246
MILLIPLEX® Streptavidin-Phycoerythrin	150 µL	1 tube	45-001H
MILLIPLEX® Amplification Buffer (1X)	3.2 mL	1 bottle	43-024A
Set of one 96-well Plate and 2 sealers	-	1 set	-
Empty mixing vials	-	3 vials	-

For research use only. Not for use in diagnostic procedures.

Analyte	Magnetic Bead Region
Total Ras	21
RasG12D	38
RasG12V	39
pBRAF	43
pCRAF	44
pMEK1	55

## Materials Required (not included)

### Reagents

- Protease inhibitors (Cat. No. 535140 or similar product)
- Coomassie or BCA-based total protein assay (Cat. No. 71285 or similar product) or an assay normalization control, such as the GAPDH (Cat. No. 46-667MAG) MAPmate™ or  $\beta$ -Tubulin (Cat. No. 46-713MAG) MAPmate™
- MAGPIX® Drive Fluid PLUS (Cat. No. 40-50030), xMAP® Sheath Fluid PLUS (Cat. No. 40-50021), or xMAP® Sheath Concentrate PLUS (Cat. No. 40-50023)
- 10X Assay Buffer 1 (Cat. No. MPEQ-AB) if using a magnetic plate washer (see Supplemental Protocol).

## Instrumentation/Materials




- Adjustable pipettes with tips capable of delivering 25  $\mu$ L to 1000  $\mu$ L
- Multichannel pipettes capable of delivering 25  $\mu$ L to 200  $\mu$ L
- Reagent reservoirs
- Polypropylene microfuge tubes
- Aluminum foil
- Absorbent pads
- Laboratory vortex mixer
- Sonicator (Branson Ultrasonic Cleaner Model No. B200 or equivalent)
- Titer plate shaker (VWR<sup>®</sup> Microplate Shaker Cat. No. 12620-926 or equivalent)
- Luminex<sup>®</sup> 200<sup>™</sup>, HTS, FLEXMAP 3D<sup>®</sup>, MAGPIX<sup>®</sup> instrument with xPONENT<sup>®</sup> software, or xMAP<sup>®</sup> INTELLIFLEX instrument with INTELLIFLEX software by Luminex<sup>®</sup> Corporation
- Filter devices for clearing lysates
  - 2 mL or greater, Cat. No. SLHVX13NL
  - 0.5–2 mL, Cat. No. UFC40DV25
  - Less than 0.5 mL, Cat. No. UFC30DV25
  - For 96-well plates, Cat. No. MSBVN1210
- Use of a handheld Magnetic Separation Block (Cat. No. 40-285 or equivalent) is recommended. If using an Automatic Plate washer for magnetic beads (BioTek<sup>®</sup> ELx405, Cat. No. 40-015 or equivalent), consult Supplemental Protocol.

For research use only. Not for use in diagnostic procedures.

## Safety Precautions

- All tissue components and biological materials should be handled as potentially hazardous. Follow universal precautions as established by the Centers for Disease Control and Prevention and by the Occupational Safety and Health Administration when handling and disposing of infectious agents.
- Sodium azide or Proclin™ has been added to some reagents as a preservative. Although the concentrations are low, Sodium azide may react with lead and copper plumbing to form highly explosive metal azides. Dispose of unused contents and waste in accordance with international, federal, state and local regulations.

## Symbol Definitions

Ingredient	Cat. No.	Full Label	
COR-L23: serum	47-318-		<b>Danger.</b> Harmful if swallowed Causes skin irritation. Causes serious eye damage. Very toxic to aquatic life. Toxic to aquatic life with long lasting effects. Avoid release to the environment. IF SWALLOWED: Call a POISON CENTER/ doctor if you feel unwell. Collect spillage. Dispose of contents/ container to an approved waste disposal plant.
THP-1 Cell Lysate: Serum	47-246	 	

---

## Technical Guidelines

To obtain reliable and reproducible results, the operator should carefully read this entire manual and fully understand all aspects of each assay step before running the assay. The following notes should be reviewed and understood before the assay is set up.

- FOR RESEARCH USE ONLY. NOT FOR USE IN DIAGNOSTIC PROCEDURES.
- Do not use beyond the expiration date on the label.
- Do not mix or substitute reagents with those from other lots or sources.
- The Antibody-Immobilized Beads are light sensitive and must be protected from light at all times. Cover the assay plate containing beads with opaque plate lid or aluminum foil during all incubation steps.
- It is important to allow all reagents to warm to room temperature (20-25 °C) before use in the assay.
- Incomplete washing can adversely affect the assay outcome. All washing must be performed with the Assay Buffer provided.
- Any unused mixed Antibody-Immobilized Beads may be stored in the Mixing Bottle at 2-8 °C for up to one week.
- The plate should be read immediately after the assay is finished. If, however, the plate cannot be read immediately, seal the plate, cover with aluminum foil or an opaque lid, and store the plate at 2-8 °C for up to 24 hours. Prior to reading, agitate the plate on the plate shaker at room temperature for 10 minutes. Delay in reading a plate may result in decreased sensitivity for some analytes.
- The titer plate shaker should be set at a speed to provide maximum orbital mixing without splashing of liquid outside the wells. For the recommended plate shaker, this would be a setting of 5-7 which is approximately 500-800 rpm.
- Ensure that the needle probe is clean. This may be achieved by sonication and/or alcohol flushes.
- For the FLEXMAP 3D® instrument, when using the solid plate in the kit, the final suspension should be in 150 µL and 75 µL should be aspirated.
- For the xMAP® INTELLIFLEX instrument, adjust probe height based on the type of plate you are using, place an alignment disk or an alignment sphere in the well according to the protocol recommended by Luminex®.
- Vortex all reagents well before adding to plate.

## Sample Collection and Storage

### Considerations for Cell Stimulation.

1. Treating cells with growth factors (ex. EGF), cytokines (ex. TNF $\alpha$ ), or other compounds (ex. Arsenite) induce a multitude of signaling cascades. The duration of stimulation in addition to the concentration of the respective factor/compound should be considered since they influence the degree of phosphorylation of any given analyte.
2. Cellular responses to growth factors are typically improved when cells have been serum starved prior to treatment.
3. Cell lines will differ in the robustness of their signaling response for any given stimulation.
4. The suggested working range of protein concentration for the assay is 1 to 25  $\mu$ g of total protein/well (25  $\mu$ L/well at 40 to 1000  $\mu$ g/mL). A total protein amount of 10  $\mu$ g/well is generally a good starting point for lysates for which target protein expression levels are unknown.

### Preparation of cell lysates

MILLIPLEX<sup>®</sup> Lysis Buffer is supplied as **1X** stock solution. The Lysis Buffer contains phosphatase inhibitors *including* 1 mM sodium orthovanadate (Na<sub>3</sub>VO<sub>4</sub>) but does **NOT** contain protease inhibitors. It is recommended that protease inhibitors (Cat. No. 535140 or a similar product) be added immediately before use.

### Suggested cell lysis protocol for adherent cells

1. After treatments, wash cells with ice cold Buffered Saline (PBS or TBS) and drain.
2. Add ice-cold **1X** MILLIPLEX<sup>®</sup> Lysis Buffer with freshly added protease inhibitors to cells (0.6 mL per 150 mm dish, 0.3 mL per 100 mm dish, or 0.1 mL per well of 24-well plate).
3. Scrape adherent cells off the dish with a cell scraper. Transfer the cell suspension into a centrifuge tube and gently rock for 10-15 minutes at 4 °C.
4. Remove particulate matter by filtration.
  - Suggested filters:
    - 2 mL or greater, Cat. No. SLPBDZ5NZ
    - 0.5–2 mL, Cat. No. UFC0DV25
    - Less than 0.5 mL, Cat. No. UFC30DV00
5. Aliquot and store the lysate at -70 °C. The lysate should be stable for several months.
6. It is recommended that the lysate be diluted at least 1:10 with PBS for determining the protein concentration with Coomassie-based assays or 1:4 for BCA assays. Alternatively, protein quantification may be omitted if an assay normalization control, such as the GAPDH (Cat. No. 46-667MAG) MAPmate<sup>™</sup> or  $\beta$ -Tubulin (Cat. No. 46-713MAG) MAPmate<sup>™</sup>, is used.

For research use only. Not for use in diagnostic procedures.

### **Suggested cell lysis protocol for non-adherent cells**

1. Pellet the cells by centrifugation (500 – 1000 x g) in a tabletop centrifuge for 5 minutes.
2. Wash the cells in ice-cold PBS or TBS.
3. Add ice-cold **1X** MILLIPLEX® Lysis Buffer containing freshly prepared protease inhibitors to cells (1 mL per  $1 \times 10^7$  cells).
4. Gently rock the lysate for 10-15 minutes at 4 °C.
5. Remove particulate matter by filtration (See above). Aliquot and store the lysate at -70 °C. The lysate should be stable for several months.
6. It is recommended that the lysate be diluted at least 1:10 in PBS for determining the protein concentration with Coomassie-based assays or 1:4 for BCA assays. Alternatively, protein quantification may be omitted if an assay normalization control, such as the GAPDH (Cat. No. 46-667MAG) MAPmate™ or  $\beta$ -Tubulin (Cat. No. 46-713MAG) MAPmate™, is used.

### **Cell lysis protocol for cells in sterile 96-well tissue culture plates**

Adherent or non-adherent cells seeded or grown in sterile 96-well tissue culture grade plates (see supplemental protocols) can be washed, treated, and lysed in the same plate, but need to be filtered in a separate 96-well filter plate. Wash the cells by centrifugation in a microplate carrier 2 minutes at 500 x g.

1. Remove the supernatant via aspiration and add 100  $\mu$ L of ice-cold PBS or TBS.
2. Centrifuge and remove supernatant via aspiration.
3. Add 30-50  $\mu$ L/well of ice-cold 1X MILLIPLEX® Lysis Buffer containing freshly prepared protease inhibitors.
4. Place the plate on an orbital shaker (600-800 rpm) for 10-15 minutes at 4 °C.
5. Transfer the lysate to a 96-well filter plate that has been pre-wetted with 1X Lysis Buffer.
6. Place a low protein binding, 96-well round bottom or V-bottom plate underneath the filter plate.
7. Centrifuge the plates in a microplate carrier for 5 minutes at 500 x g.
8. Store the filtered lysate at -70 °C until ready for use.
9. It is recommended that the lysate be diluted at least 1:10 in PBS for determining the protein concentration with Coomassie-based assays or 1:4 for BCA assays. Alternatively, protein quantification may be omitted if an assay normalization control, such as the GAPDH (Cat. No. 46-667MAG) MAPmate™ or  $\beta$ -Tubulin (Cat. No. 46-713MAG) MAPmate™, is used.

## Preparation of Reagents for Immunoassay

### Preparation of Ras-Raf Oncoprotein magnetic beads

MILLIPLEX® magnetic beads are provided as a **20X** stock solution and should be protected from light.

1. Sonicate **20X** stock magnetic beads for 15 seconds, then vortex for 30 seconds.
2. Dilute the beads to **1X** by combining 0.150 mL beads with 2.85 mL of MILLIPLEX® Assay Buffer 2. Use one of the Mixing Bottles provided.
3. Vortex the **1X** capture beads for 15 seconds.
4. For use, transfer 1X beads with a pipette into a reservoir, do not pour from Mixing Bottle.
5. Please note that multiplexing phospho-specific and total or panTyr MAPmate™ pairs is not recommended due to cross-reactivity.

### Preparation of Biotin-Labeled Detection Antibody and Streptavidin-PE

MILLIPLEX® Detection Antibody is provided as a **20X** stock solution.

1. Vortex the 20X Detection Antibody stock for 10 seconds, it may be necessary to centrifuge briefly after vortexing for complete recovery of contents.
2. Dilute the Detection Antibody to 1X by combining 0.150 mL of Detection Antibody with 2.85 mL of MILLIPLEX® Assay Buffer 2. Use one of the Mixing Bottles provided.
3. Vortex the MILLIPLEX® Streptavidin-Phycoerythrin 1:25 (SAPE) for 10 seconds.
4. Dilute SAPE by combining 0.120 mL of Streptavidin-Phycoerythrin with 2.88 mL of MILLIPLEX® Cell Signaling Assay Buffer 2. Use one of the mixing vials provided.
5. Transfer 1X biotinylated detection antibody and SAPE with a pipette to separate reservoirs. Do not pour from mixing vials.

### Multiplexing additional MILLIPLEX® Cell Signaling Magnetic MAPmates™ with the 6-plex Ras-Raf Oncoprotein Magnetic Bead Kit.

Additional Cell Signaling Phospho-MAPmates™ may be combined with this kit, up to a maximum of 9 additional MAPmates™.

**Please note** that Total or PanTyr MAPmate™ pairs should not be multiplexed with the 6-plex Ras-Raf Oncoprotein kit.

1. For each additional Magnetic Bead MAPmate™, sonicate **20X** stock capture beads for 15 seconds, then vortex for 30 seconds.
2. Add 0.150 mL 6-plex Ras-Raf Oncoprotein Magnetic beads to the mixing vial.
3. For each additional MAPmate™, add 0.150 mL from each antibody bead vial to the mixing vial and bring final volume to 3.0 mL with Assay Buffer 2. Vortex the mixed beads well.
4. Use the same preparation volumes for the Detection Antibody.

For research use only. Not for use in diagnostic procedures.

**Example 1:** When using 2 additional MAPmates™, add 0.150 mL 6-plex Ras-Raf Oncoprotein Beads/Detection Antibody and 0.150 mL of each additional MAPmate™ Beads/Detection Antibody to the mixing vial. Then add 2.55 mL Assay Buffer 2, for a final volume of 3.0 mL.

**Example 2:** When using 5 additional MAPmates, add 0.150 mL 6-plex Ras-Raf Oncoprotein Beads/Detection Antibody and 0.150 mL of each additional MAPmate Beads/Detection Antibody to the mixing vial. Then add 2.1 mL Assay Buffer 2, for a final volume of 3.0 mL.

**Preparation of lyophilized MILLIPLEX® Cell Lysates (Cat. No. 47-318, 47-246).**

MILLIPLEX® COR-L23 Cell Lysate: Serum (No. 47-318) is provided as a lyophilized stock of cell lysate prepared from COR-L23 cells treated with serum and is used as a positive control for RasG12V.

MILLIPLEX® THP-1 Cell Lysate: Serum (No. 47-246) is provided as a lyophilized stock of cell lysate prepared from THP-1 cells treated with serum and is used as a positive control for RasG12D.

Each of the cell lysates were prepared in MILLIPLEX® Lysis Buffer containing protease inhibitors and lyophilized for stability. The lysates can be used control samples or alternatively, to create calibration curves for relative analyte quantification.

MILLIPLEX® Cell Lysates as a positive or negative control

1. Reconstitute each of the lyophilized cell lysates in 100 µL of ultrapure water. For each vial this will yield 100 µL of lysate at a total protein concentration of 2 mg/mL.
2. Gently vortex and incubate the reconstituted lysates for 5 minutes at RT (store on ice).
3. Pipette 150 µL of MILLIPLEX® Assay Buffer 2 to each cell lysate vial and vortex mix. The cell lysate is now prepared for use in the MILLIPLEX® Ras-Raf Oncoprotein Magnetic Bead Panel.
4. If desired, unused lysate may be stored in its original container at -80 °C for up to one month.

## Immunoassay Protocol (96-well Plate and Handheld Magnetic Separation Block)

1. Dilute filtered lysates at least 1:1 in MILLIPLEX® Assay Buffer. The suggested working range of protein concentration for the assay is 1 to 25 µg of total protein/well (25 µL/well at 40 to 1,000 µg/mL).
2. Add 50 µL of Assay Buffer into each well of the plate. Cover and mix on a plate shaker for 10 minutes at room temperature (20-25 °C).
3. Decant Assay Buffer and remove the residual amount from all wells by inverting the plate and tapping it smartly onto absorbent towels several times.
4. Vortex the 1X bead suspension for 10 seconds. Add 25 µL of 1X bead suspension to each well.
5. Add 25 µL of Assay Buffer, reconstituted control cell lysates and sample lysates to appropriate wells and incubate overnight (16-20 hours) at 2-8 °C on a plate shaker (600-800 rpm) protected from light.
6. Attach handheld magnetic separation block to plate, allow 60 seconds for beads to settle and decant samples and controls.
7. Remove plate from magnetic separation block and wash plate with 100 µL Assay Buffer per well (see Washing Note below). Repeat for a total of two washes.
8. Add 25 µL/well of 1X MILLIPLEX® Detection Antibody.
9. Seal, cover with lid and incubate with agitation on a plate shaker for 1 hour at room temperature (20-25 °C).
10. Attach Magnetic Separation Block, wait for 60 seconds and decant Detection Antibody.
11. Remove plate from magnetic separation block and wash plate once with 100 µL Assay Buffer per well (see Washing Note below).
12. Add 25 µL of 1X MILLIPLEX® Streptavidin-Phycoerythrin (SAPE).

Add 50 µL Assay Buffer per well

Shake 10 min, RT  
Decant

- Add 25 µL 1X beads to wells
- Add 25 µL Assay Buffer to the blank well
- Add 25 µL control and sample lysates to appropriate wells

Incubate overnight (16-20 hours) at 4 °C with shaking; dark

Wash 2X with 100 µL Assay Buffer. Add 25 µL 1X Detection Antibody.

Incubate 1 hr at RT with shaking; dark

Remove Detection Antibody and wash 1X with 100 µL Assay Buffer. Add 25 µL 1X Streptavidin-PE (SAPE)

Incubate 15 min at RT with shaking; dark

13. Seal, cover with lid and incubate with agitation on a plate shaker for 15 minutes at room temperature (20-25 °C).
14. **DO NOT REMOVE SAPE.** Add 25 µL of MILLIPLEX® Amplification Buffer to each well.
15. Seal, cover, and incubate with agitation on a plate shaker for 15 minutes at room temperature (20-25 °C).
16. Attach Magnetic Separation Block, wait for 60 seconds and decant SAPE/Amplification buffer.
17. Add 150 µL of sheath fluid and mix for 5 minutes on plate shaker. Analyze using the Luminex® system.

**DO NOT REMOVE**  
SAPE and add 25 µL  
Amplification buffer



Incubate 15 min at  
RT with shaking;  
dark

Remove Streptavidin-  
PE/Amplification buffer  
and resuspend beads  
in 150 µL sheath fluid.  
Read results using  
appropriate Luminex®  
instrument.

## Washing Note

For handheld magnet, rest plate on magnet for 60 seconds to allow complete settling of magnetic beads. Remove well contents by gently decanting the plate in an appropriate waste receptacle and gently tapping on absorbent pads to remove residual liquid. Wash plate with 100 µL of Assay Buffer by removing plate from magnet, adding Assay Buffer, shaking for 30 seconds, reattaching to magnet, letting beads settle for 60 seconds and removing well contents as previously described after each wash. Repeat wash steps as recommended in Assay Procedure.

## Equipment Settings

Luminex<sup>®</sup> 200™, HTS, FLEXMAP 3D<sup>®</sup>, MAGPIX<sup>®</sup> instruments with xPONENT<sup>®</sup> software and xMAP<sup>®</sup> INTELLIFLEX instrument with INTELLIFLEX software:

These specifications are for the above listed instruments and software. Luminex<sup>®</sup> instruments with other software (for example, MasterPlex<sup>®</sup>, StarStation, LiquiChip, Bio-Plex<sup>®</sup> Manager™, LABScan™100) would need to follow instrument instructions for gate settings and additional specifications from the vendors for reading Luminex<sup>®</sup> magnetic beads.

For magnetic bead assays, each instrument must be calibrated and performance verified with the indicated calibration and verification kits.

<b>Instrument</b>	<b>Calibration Kit</b>	<b>Verification Kit</b>
Luminex <sup>®</sup> 200™ and HTS	xPONENT <sup>®</sup> 3.1 compatible Calibration Kit (Cat. No. LX2R-CAL-K25)	Performance Verification Kit (Cat. No. LX2R-PVER-K25)
FLEXMAP 3D <sup>®</sup>	FLEXMAP 3D <sup>®</sup> Calibrator Kit (Cat. No. F3D-CAL-K25)	FLEXMAP 3D <sup>®</sup> Performance Verification Kit (Cat. No. F3D-PVER-K25)
xMAP <sup>®</sup> INTELLIFLEX	xMAP <sup>®</sup> INTELLIFLEX Calibration Kit (Cat. No. IFX-CAL-K20)	xMAP <sup>®</sup> INTELLIFLEX Performance Verification Kit (Cat. No. IFX-PVER-K20)
MAGPIX <sup>®</sup>	MAGPIX <sup>®</sup> Calibration Kit (Cat. No. MPX-CAL-K25)	MAGPIX <sup>®</sup> Performance Verification Kit (Cat. No. MPX-PVER-K25)

**NOTE:** These assays cannot be performed on any instruments running Luminex<sup>®</sup> IS 2.3 or Luminex<sup>®</sup> 1.7 software.

The Luminex® probe height must be adjusted to the plate provided in the kit. Please use Cat. No. MAG-PLATE, if additional plates are required for this purpose.

Events	50 per bead	
Sample Size	100 µL	
Gate Settings	8,000 to 15,000	
Reporter Gain	Default (Low PMT)	
Time Out	60 seconds	
Bead Region	Total Ras	21
	RasG12D	38
	RasG12V	39
	pBRAF	43
	pCRAF	44
	pMEK1	55

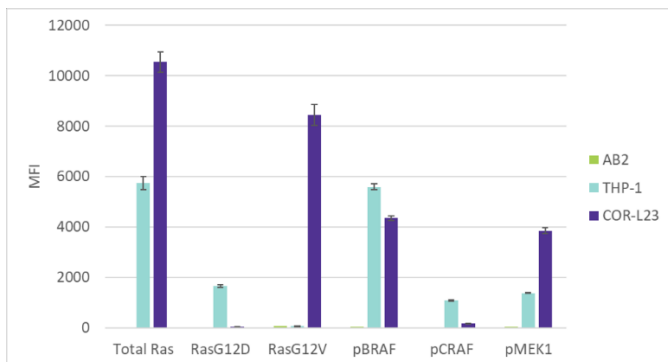
## Supplemental Protocol

### Plate Washer Use

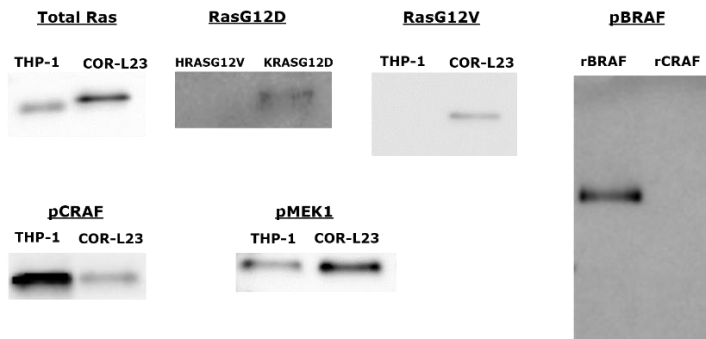
The use of a plate washer is not a recommended method of washing for cell signaling assays. Deterioration of assay performance and well-to-well variability have been noted when using plate washers. If desired, MPEQ-AB may be purchased and used as a general wash buffer with plate washers. MPEQ-AB should be diluted to 1X for use in plate washers. Follow standard protocol wash instructions when using a plate washer (2 washes after sample incubation). Contact Technical Service if additional instructions are required.

## Representative Data

### 6-plex Ras-Raf Oncoprotein Panel Analysis of serum-treated THP-1 and COR-L23 cells



**Figure 1. Multiplex analysis of THP-1 and COR-L23 cells treated with serum.** Serum treated THP-1 (47-246) and COR-L23 (47-318) lyophilized cell lysates were rehydrated in water and diluted in Assay Buffer 2, per kit instructions. 20 µg total protein of each lysate was analyzed according the Assay protocol (lysate incubation at 4 °C overnight). The Median Fluorescence Intensity (MFI) was measured with the Luminex® system. Data represent the average and standard deviation of three replicate wells.



**Figure 2. Demonstration of specificity by Immunoprecipitation/Western Blot.** Recombinant HRASG12V, KRASG12D, BRAF, and CRAF proteins or THP-1 and COR-L23 cell lysates were incubated with individual capture beads from the Ras-Raf Oncoprotein panel in order to immunoprecipitate the respective protein. Immunoprecipitated proteins were separated on SDS-PAGE, transferred to nitrocellulose, and probed with the individual biotin-labeled detection antibodies used in the kit. The proteins were imaged using Streptavidin-HRP and chemiluminescence. For research use only. Not for use in diagnostic procedures.

## Troubleshooting

<b>Problem</b>	<b>Probable Cause</b>	<b>Solution</b>
	Bead mix prepared inappropriately	Sonicate bead vials and vortex just prior to adding to bead mix bottle according to protocol. Agitate bead mix intermittently in reservoir while pipetting this into the plate.
	Samples cause interference due to particulate matter or viscosity	See above. Also sample probe may need to be cleaned with alcohol flush, back flush and washes; or if needed probe should be removed and sonicated.
Insufficient bead count	Probe height not adjusted correctly	When reading the assay on the Luminex® 200™ instrument, adjust probe height to the kit solid plate or to the recommended filter plates using 3 alignment discs. When reading the assay on the MAGPIX® instrument, adjust probe height to the kit solid plate or to the recommended filter plates using 2 alignment discs. When reading the assay on the FLEXMAP 3D® instrument, adjust probe height to the kit solid plate using 1 alignment disc. For the FLEXMAP 3D® instrument, when using the solid plate in the kit, the final suspension should be in 150 µL and 75 µL should be aspirated. When reading the assay on the xMAP® INTELLIFLEX instrument, adjust probe height based on the type of plate you are using, place an alignment disk or an alignment sphere in the well according to the protocol recommended by Luminex®.
Background is too high	Background wells were contaminated	Avoid cross-well contamination by using sealer appropriately and pipetting with multichannel pipettes without touching reagent in plate.
	Insufficient washes	Increase number of washes.

For research use only. Not for use in diagnostic procedures.

<b>Problem</b>	<b>Probable Cause</b>	<b>Solution</b>
Beads not in region or gate	Luminex® instrument not calibrated correctly or recently	Calibrate Luminex® instrument based on manufacturer's instructions, at least once a week or if temperature has changed by > 3 °C.
	Gate settings not adjusted correctly	Some Luminex® instruments (for example, Bio-Plex®) require different gate settings than those described in the kit protocol. Use instrument default settings.
	Wrong bead regions in protocol template	Check kit protocol for correct bead regions or analyte selection.
	Incorrect sample type used	Samples containing organic solvents or if highly viscous should be diluted or dialyzed as required.
	Instrument not washed or primed	Prime the Luminex® instrument 4 times to rid it of air bubbles, wash 4 times with sheath fluid or water if there is any remnant alcohol or sanitizing liquid.
Signal for whole plate is same as background	Beads were exposed to light	Keep plate and bead mix covered with dark lid or aluminum foil during all incubation steps.
	Incorrect or no Detection Antibody was added	Add appropriate Detection Antibody and continue.
Signals too high	Streptavidin-Phycoerythrin was not added	Add Streptavidin-Phycoerythrin according to protocol. If Detection Antibody has already been removed, sensitivity may be low.
	Calibration target value set too high	With some Luminex® instruments (for example, Bio-Plex®) default target setting for RP1 calibrator is set at high PMT. Use low target value for calibration and reanalyze plate.
Sample readings are out of range	Plate incubation was too long with samples	Use shorter incubation time.
	Samples contain no or below detectable levels of analyte	If below detectable levels, it may be possible to use higher sample volume. Check with technical support for appropriate protocol modifications.

For research use only. Not for use in diagnostic procedures.

<b>Problem</b>	<b>Probable Cause</b>	<b>Solution</b>
High variation in samples	Multichannel pipette may not be calibrated	Calibrate pipettes.
	Plate washing was not uniform	Confirm all reagents are removed completely in all wash steps.
	Samples may have high particulate matter or other interfering substances	See above.
	Plate agitation was insufficient	Plate should be agitated during all incubation steps using an orbital plate shaker at a speed where beads are in constant motion without causing splashing.
	Cross-well contamination	Check when reusing plate sealer that no reagent has touched sealer. Care should be taken when using same pipette tips that are used for reagent additions and that pipette tip does not touch reagent in plate.

## Product Ordering

<b>Replacement Reagents</b>	<b>Cat. No.</b>
MILLIPLEX® 6-plex Ras-Raf Oncoprotein Panel, Magnetic Beads (20X)	42-684MAG
MILLIPLEX® 6-plex Ras-Raf Oncoprotein Panel, Biotin (20X) (Detection Antibody)	44-684KMG
MILLIPLEX® Lysis Buffer	43-040
MILLIPLEX® Assay Buffer 2	43-041
MILLIPLEX® COR-L23 Cell Lysate: Serum	47-318
MILLIPLEX® THP-1 Cell Lysate: Serum	47-246
MILLIPLEX® Streptavidin-Phycoerythrin	45-001H
MILLIPLEX® Amplification Buffer (1X)	43-024A
Set of two MILLIPLEX® 96-well Plates with sealers	MAG-PLATE

For research use only. Not for use in diagnostic procedures.

## Well Map

	1	2	3	4	5	6	7	8	9	10	11	12
A	Assay Buffer 2 Blank	Sample 2										
B	Assay Buffer 2 Blank	Sample 2										
C	COR-L23: Serum control	Sample 3										
D	COR-L23: Serum control	Sample 3										
E	THP-1: Serum control	Sample 4										
F	THP-1: Serum control	Sample 4										
G	Sample 1	Etc.										
H	Sample 1	Etc.										

For research use only. Not for use in diagnostic procedures.

---

## Notice

We provide information and advice to our customers on application technologies and regulatory matters to the best of our knowledge and ability, but without obligation or liability. Existing laws and regulations are to be observed in all cases by our customers. This also applies in respect to any rights of third parties. Our information and advice do not relieve our customers of their own responsibility for checking the suitability of our products for the envisaged purpose.

The information in this document is subject to change without notice and should not be construed as a commitment by the manufacturing or selling entity, or an affiliate. We assume no responsibility for any errors that may appear in this document.

By purchasing this product, which contains fluorescently labeled microsphere beads authorized by Luminex<sup>®</sup> Corporation ("Luminex<sup>®</sup>"), you, the customer, acquire the right under the Luminex<sup>®</sup> patent rights, if any, to use this product or any portion of this product, including without limitation the microsphere beads contained herein, only with the Luminex<sup>®</sup> laser based fluorescent analytical test instrumentation marketed under the name of Luminex<sup>®</sup> 200™, HTS, FLEXMAP 3D<sup>®</sup>, xMAP<sup>®</sup> INTELLIFLEX, MAGPIX<sup>®</sup>.

## Contact Information

For the location of the office nearest you, go to [SigmaAldrich.com/offices](https://www.SigmaAldrich.com/offices).

## Technical Assistance

Visit the tech service page at [SigmaAldrich.com/techservice](https://www.SigmaAldrich.com/techservice).

## Standard Warranty

The applicable warranty for the products listed in this publication may be found at [SigmaAldrich.com/terms](https://www.SigmaAldrich.com/terms).

## Safety Data Sheets (SDS)

Safety Data Sheets are available on the product page at [SigmaAldrich.com](https://www.SigmaAldrich.com).

The life science business of Merck KGaA, Darmstadt, Germany operates as MilliporeSigma in the U.S. and Canada.

MilliporeSigma, Millipore, Milliplex and Sigma-Aldrich are trademarks of Merck KGaA, Darmstadt, Germany or its affiliates. All other trademarks are the property of their respective owners. Detailed information on trademarks is available via publicly accessible resources.

© 2023 Merck KGaA, Darmstadt, Germany and/or its affiliates. All Rights Reserved.

For research use only. Not for use in diagnostic procedures.