

## 94379 Atto Rho101 Biotin

### Application

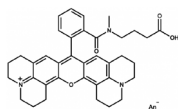
Atto Rho101 is a new rhodamine dye, based on the well-known laser dye Rhodamine 101. The new label is functionalized for coupling to bio-molecules such as DNA, RNA or proteins. Atto Rho101 shows extraordinary brightness and photostability.

After coupling to a substrate Atto Rho101 carries a net electrical charge of  $+1$ . The dye is moderately hydrophilic.

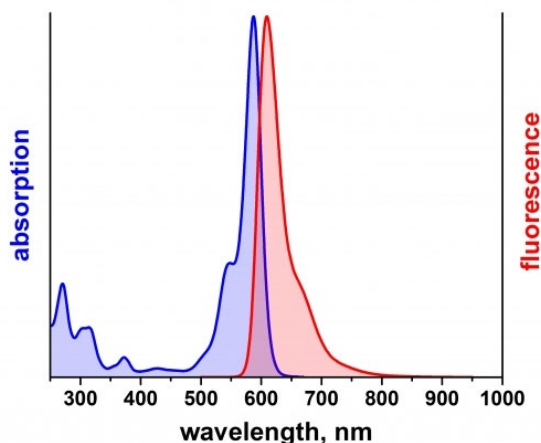
The **biotin** derivative can be used as reagent for binding to proteins like avidin and streptavidin.

### Product Description

MW	1014 g/mol
$\lambda_{\text{abs}}$	587 nm
$\epsilon_{\text{max}}$	$1.2 \times 10^5 \text{ M}^{-1} \text{ cm}^{-1}$
$\lambda_{\text{fl}}$	609 nm
$\eta_{\text{fl}}$	80 %
$\tau_{\text{fl}}$	4.2 ns
$\text{CF}_{260}$	0.18
$\text{CF}_{280}$	0.17



### Optical data of the carboxy derivative (in aqueous solution):



**Storage:** store at  $\leq -20^\circ\text{C}$ . Protect from long-term exposure to moisture and light.

### Precautions and Disclaimer

This product is for R&D use only, not for drug, household, or other uses. Please consult the Material Safety Data Sheet for information regarding hazards and safe handling practices.

The vibrant M and Sigma-Aldrich are trademarks of Merck KGaA, Darmstadt, Germany or its affiliates.

Detailed information on trademarks is available via publicly accessible resources.

© 2018 Merck KGaA, Darmstadt, Germany and/or its affiliates. All Rights Reserved.

The life science business of Merck KGaA, Darmstadt, Germany operates as MilliporeSigma in the US and Canada.

