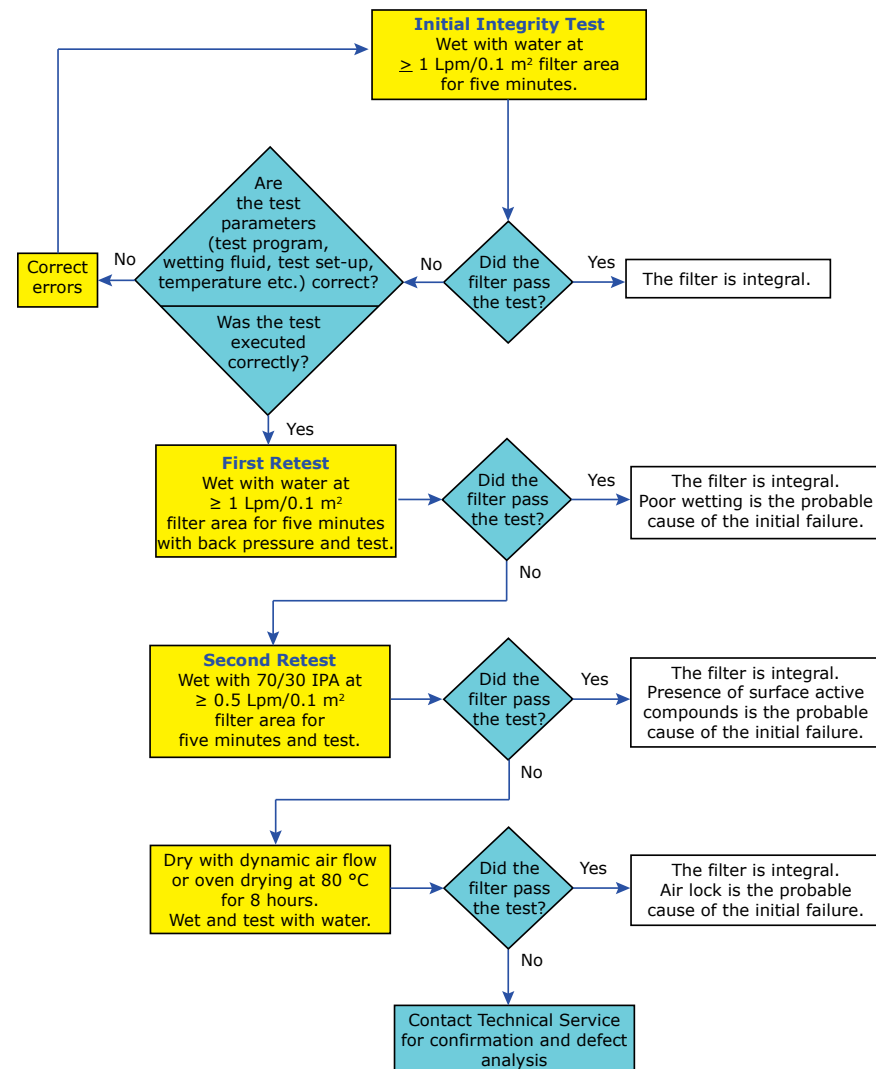


# Troubleshooting

## Integrity Testing Decision Tree



## Wetting

An integrity test value out of specification may be caused by:

- Improperly or incompletely wet filter
- Contaminant or residue on the filter
- Improper O-ring seal
- Temperature not within manufacturer's specification
- System hardware leak (automatic integrity tester)

## Integrity Testing

If a problem is encountered:

- Do not remove the filter from its housing (for a post-use test).
- Check connections for leaks (automatic integrity tester).
- Ensure that appropriate integrity test specifications are used for the filter and housing.
- Ensure the environmental and/or test fluid temperature is within the manufacturer's specification.
- Ensure an appropriate test fluid is used.

We provide information and advice to our customers on application technologies and regulatory matters to the best of our knowledge and ability, but without obligation or liability. Existing laws and regulations are to be observed in all cases by our customers. This also applies in respect to any rights of third parties. Our information and advice do not relieve our customers of their own responsibility for checking the suitability of our products for the envisaged purpose.

For technical assistance please visit:

[www.emdmillipore.com/techservice](http://www.emdmillipore.com/techservice).  
Worldwide contact information is available at [www.emdmillipore.com/offices](http://www.emdmillipore.com/offices)

For additional information and documentation please contact:

Merck KGaA, Darmstadt, Germany  
Corporation with General Partners  
Frankfurter Str. 250  
64293 Darmstadt, Germany  
Phone: + 49 6151-72 0

For requests from USA and Canada please contact:

MilliporeSigma  
A subsidiary of Merck KGaA, Darmstadt, Germany  
400 Summit Drive  
Burlington, MA 01803 USA  
Phone: 1-800-645-5476

The vibrant M, Durapore, Millidisk, Millipak, Emprove and Optiseal are trademarks of Merck KGaA, Darmstadt, Germany or its affiliates. All other trademarks are the property of their respective owners. Detailed information on trademarks is available via publicly accessible resources.

© 2003- 2019 Merck KGaA, Darmstadt, Germany and/or its affiliates. All Rights Reserved  
P35515 Rev 12 04/2019.

**Millipore**  
Preparation, Separation,  
Filtration & Testing Products

# Wetting Instructions

## for Filter Units with Durapore® Membrane

To achieve optimal results, use this wetting procedure prior to conducting an integrity test. Refer to the appropriate Emprove® Dossier, Validation Guide or Certificate of Quality for specifications for the filter to be tested.

**MILLIPORE**  
**SIGMA**

## Water Wetting Instructions

**NOTE** The filter should be completely dry to ensure complete and adequate wetting of the membrane.

Use purified ambient temperature water.

**CARTRIDGE FILTERS ONLY:** Moisten the filter O-ring with fluid to be filtered to allow ease of insertion into the filter housing.

1. Set up installation as shown here and close V1, V2 and V3.

2. Open V2, then slowly open V1 to fill the filter. When fluid flows through V2 and all air has been released, close V2.

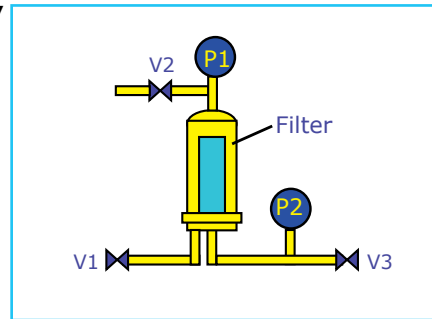
3. Gradually increase the upstream pressure to 2.8 bar (40 psig). Do not exceed the maximum differential pressure rating (see Certificate of Quality) for the filter. Maintain this pressure for a minimum of one minute to dissolve any residual gas within the filter and to ensure membrane wetting.

4. After one minute, gradually open V3 and begin to flow fluid through the filter at the minimum flow rate shown in the *Minimum Recommended Flow Rates* table.

5. Flow for five minutes.

6. Close V1 to stop the fluid flow and allow the upstream pressure (P1) to drop to zero.

7. Perform an integrity test.



**Typical installation**

## 70/30 IPA Wetting Instructions

70/30 IPA (70% isopropanol, 30% purified water) wetting may be used to integrity test hydrophilic filters and to troubleshoot post use integrity test failures of hydrophilic filters.

**NOTE** The polysulfone component of Millidisk® and Millipak® Final Fill filters is not compatible with alcohol at the high temperatures necessary for autoclaving or steam sterilization. IPA used in integrity testing these filters must be completely removed by either air blow down for a specified time or flushing with water at a specified flow rate prior to sterilization.

Ensure that the unit is properly grounded. Use a nitrogen pressure source to minimize flammability.

**CARTRIDGE FILTERS ONLY:** Moisten the filter O-ring with 70/30 IPA to allow ease of insertion into the filter housing.

1. Set up installation as shown here and close V1, V2 and V3.

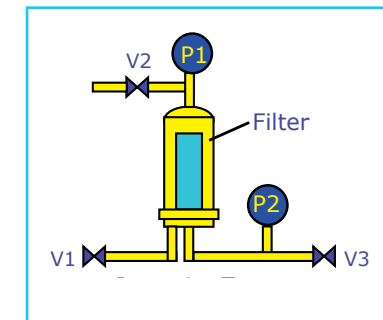
2. Open V2, then slowly open V1 to fill the filter. When fluid flows through V2 and all air has been released, close V2.

3. Gradually increase the upstream pressure to 1 bar (15 psig). Do not exceed the maximum differential pressure rating (see Certificate of Quality) for the filter. Maintain this pressure for a minimum of one minute to dissolve any residual gas within the filter and to ensure membrane wetting.

4. After one minute, gradually open V3 and begin to flow fluid through the filter at the minimum flow rate shown in the *Minimum Recommended Flow Rates* table.

5. Flow for five minutes.

6. Close V1 to stop the fluid flow and allow the upstream pressure (P1) to drop to zero and perform an integrity test.



**Typical installation**

## Minimum Recommended Flow Rates

Filter Unit	Flow Rate (Lpm)	
	Water	70/30 IPA
<b>Millidisk® Filters</b>		
10	0.5	0.25
20	1	0.5
30	1.5	0.75
40	2	1
<b>Millipak® and Millipak® Final Fill Filters</b>		
20/40/60/100	0.5	0.25
200	1	0.5
<b>Optiseal® Filters</b>		
All	2	1
<b>Durapore® Cartridges</b>		
12.5 cm (5 in.)	4	2
25 cm (10 in.)	7.5	4
50 cm (20 in.)	15	7.5
100 cm (30 in.)	22	11
<b>Multimedia Durapore® Cartridges</b>		
25 cm (10 in.)	7.5	4
50 cm (20 in.)	15	7.5
100 cm (30 in.)	22	11
<b>Multilayer Durapore® Cartridges</b>		
25 cm (10 in.)	6	3
50 cm (20 in.)	12	6
100 cm (30 in.)	18	9