

## ORDERING INFORMATION (cont.)

Description	NMWL*	Qty/Pk	Catalogue No.
<b>2-4 mL samples (cont.)</b>			
Amicon Ultra-4 Centrifugal Filter Unit with Ultracel-50 membrane	50	24	UFC8 050 24
Amicon Ultra-4 Centrifugal Filter Unit with Ultracel-100 membrane	100	24	UFC8 100 24

<b>15 mL samples</b>			
Amicon Ultra-15 Centrifugal Filter Unit with Ultracel-3 membrane	3	24	UFC9 003 24
Amicon Ultra-15 Centrifugal Filter Unit with Ultracel-10 membrane	10	24	UFC9 010 24
Amicon Ultra-15 Centrifugal Filter Unit with Ultracel-30 membrane	30	24	UFC9 030 24
Amicon Ultra-15 Centrifugal Filter Unit with Ultracel-50 membrane	50	24	UFC9 050 24
Amicon Ultra-15 Centrifugal Filter Unit with Ultracel-100 membrane	100	24	UFC9 100 24

Description	Qty/Pk	Catalogue No.
<b>Immunoprecipitation</b>		
Catch and Release® v2.0 Kit	50 assays	17-500
Catch and Release v2.0 High Throughput (HT) Kit – 96 well format	96 assays	17-501

Description	Qty/Pk	Catalogue No.
-------------	--------	---------------

### Western Blotting

#### SNAP i.d. Kit

Includes hardware base, Single Blot Holder with spacer, Double Blot Holder with spacers, Triple Blot Holder with spacers, Blot Roller, vacuum tubing with quick disconnect, user guide, and overview of procedure. Additional consumables and accessories are available separately.

1 kit WBAVDBASE

Description	Size	Qty/Pk	Catalogue No.
<b>Immobilon-P Transfer Membrane (0.45 µm)</b>			
Cut Sheet	8 x 10 cm	10	IPVH 081 00
	10 x 10 cm	10	IPVH 101 00
	20 x 20 cm	10	IPVH 202 00
Roll	26.5 x 375 cm	1	IPVH 000 10
<b>Immobilon-P<sup>sq</sup> Transfer Membrane (0.2 µm)</b>			
Cut Sheet	8 x 10 cm	10	ISEQ 081 00
	10 x 10 cm	10	ISEQ 101 00
	20 x 20 cm	10	ISEQ 202 00
Roll	26.5 x 375 cm	1	ISEQ 000 10
<b>Immobilon-FL Transfer Membrane (0.45µm)</b>			
Cut Sheet	10 x 10 cm	10	IPFL 101 00
Roll	26.5 x 3.75 cm	1	IPFL 000 10

Description	Qty/Pk	Catalogue No.
<b>Western Blot Detection Substrates</b>		
Immobilon Western Chemiluminescent AP Substrate	100 mL	WBKDS0100
Immobilon Western Chemiluminescent HRP Substrate	100 mL	WBKLS0100
Spray & Glow™ ECL Western Blotting Detection System	100 mL	17-373

\* Nominal Molecular Weight Limit or membrane cut-off in kDa

Visit [www.Millipore.com](http://www.Millipore.com) for additional pack sizes



[www.millipore.com/offices](http://www.millipore.com/offices)

ADVANCING LIFE SCIENCE TOGETHER™  
Research. Development. Production.

## TO PLACE AN ORDER OR RECEIVE TECHNICAL ASSISTANCE

Visit [www.millipore.com/support](http://www.millipore.com/support)

Millipore, Chemicon, Upstate, Catch & Release, Amicon, Millex, Stericup, ZipTip, Microcon, Ultracel, and Immobilon are registered trademarks of Millipore Corporation. The M mark, Pure-Proteome, SNAP i.d., Spray and Glow, Magna GriP, are trademarks of Millipore Corporation. Alexa Fluor is a registered trademark of Molecular Probes, Inc. Lit. No. PB1018EN00. Printed in U.S.A and France © 2008 Millipore Corporation, Billerica, MA. All rights reserved.



Data Sheet

# PureProteome™ Nickel Magnetic Beads

## A better way to purify your His-tagged proteins



Millipore's new PureProteome Nickel Magnetic Beads provide researchers with a powerful bead system to help purify polyhistidine-tagged recombinant proteins faster, easier, and better than ever before.

### Advantages

- No lysate clearing: Crude cell lysates are processed by magnetic beads.
- Fast processing time: Entire protocol is completed in less than one hour.
- High capacity: Bind 5-20 mg of protein per mL of settled beads.
- High affinity: Binding can take place in buffers containing < 5 mM EDTA.
- Flexible scale: Varying the bead quantity allows different protein yields.
- Flexible elution: Purify native or denatured protein.
- Automatable: Hands-free screening process.

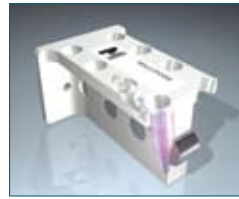
upstate | CHEMICON | Linco

THE EXPERTISE OF UPSTATE®, CHEMICON® AND LINCO® IS NOW A PART OF MILLIPORE

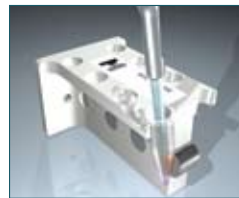
**Easy Protocol:  
Just Bind, Wash, and Elute**



Mix washed beads with 1 mL *E. coli* lysate and incubate for 30 minutes.



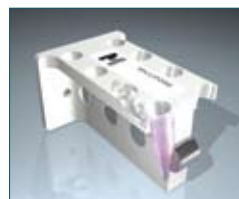
Collect beads using Magna GriP™ rack.



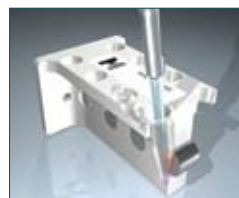
Aspirate unbound fraction.



Remove tube from rack. Resuspend beads in 0.5 mL wash buffer and incubate for 1 minute.



Collect beads using Magna GriP rack.



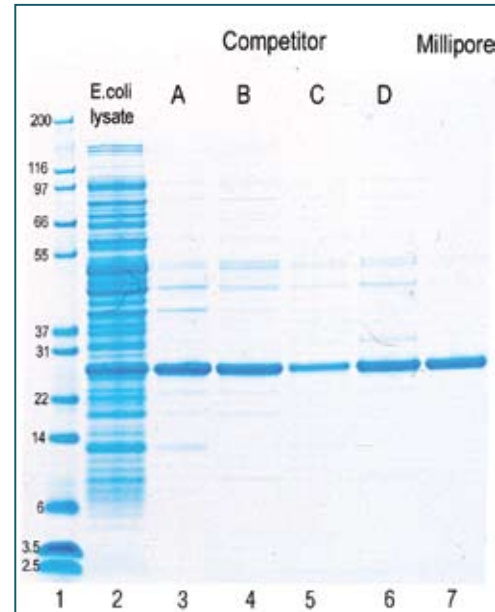
Aspirate contaminants (repeat wash steps 2 more times).



Remove tube from magnetic rack and resuspend 100 µL beads in elution buffer. After 2 minute incubation, collect beads using Magna GriP Rack. Remove purified his-tagged protein. Repeat elution step.

**High Purity**

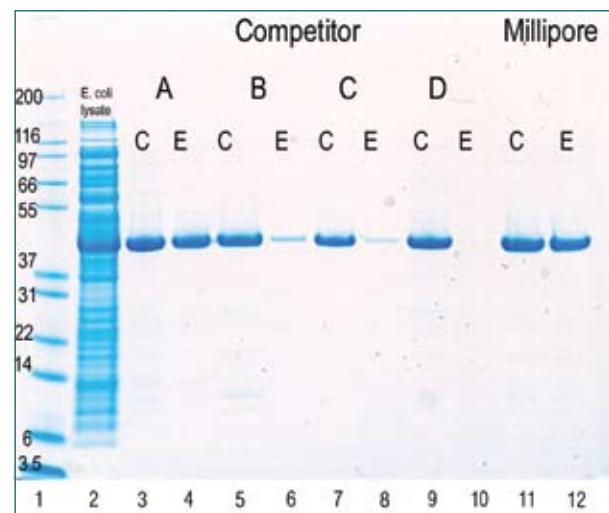
Compared with other magnetic purification systems, PureProteome Nickel Magnetic Beads provide comparable yield while offering high purities.



Coomassie Blue stained SDS-PAGE gel of purified polyhistidine-tagged 24 kDa protein from 1 mL of *E. coli* culture using Millipore and competitor magnetic beads. Lane 1: MW standards, lane 2: starting lysate, lanes 3-6: purified protein using competitor beads, lane 7: purified protein using Millipore beads.

**High Capacity and High Affinity**

Millipore has patented a process for paramagnetizing a porous silica gel that enables us to provide magnetic beads with a high binding capacity and high affinity. This permits protein binding to take place even in buffers containing EDTA.



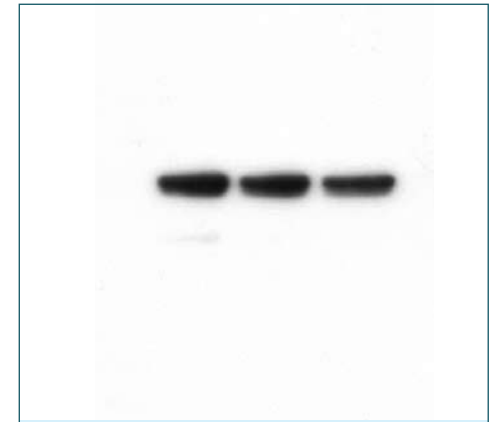
Coomassie Blue stained SDS-PAGE gel of purified polyhistidine-tagged 38 kDa protein from *E. coli* lysate in presence of 2 mM EDTA using Millipore and competitor magnetic beads. Lane 1: MW standards, lane 2: starting lysate, lanes 3-12: purified protein with (E) and without (C) 2 mM EDTA.

**DETECT YOUR His-TAGGED PROTEINS WITH THE SNAP i.d.™ PROTEIN DETECTION SYSTEM**

Millipore's new SNAP i.d. Protein Detection System revolutionizes immunodetection in record time. Unlike conventional Western blotting, where diffusion is the primary means of reagent transport, this system applies a vacuum to actively drive reagents through the membrane.

In addition, the SNAP i.d. system minimizes overblocking by using lower concentrations of blocking agents. Also, more effective wash steps remove unwanted contaminants from the membrane. Get superior Western blots in a snap with the new SNAP i.d. Protein Detection System!

Please see ordering information on back page.



Western blot analysis of lysate prepared from *E. coli* over-expressing a recombinant 24 kDa protein. Immunodetection was performed in 30 minutes using the SNAP i.d. Protein Detection System and a primary biotinylated antibody specific for the histidine tag (Millipore #16-200). The immunoreactive proteins were visualized with an HRP conjugated streptavidin secondary antibody (Millipore # SA 108) and Immobilon® Western HRP substrate.

Millipore provides all the protein research supplies you need to carry you from sample preparation to detection. In addition to tools like our popular Millex®, Stericup®, ZipTip®, and Amicon® devices, we also offer products for immunoprecipitation and Western blotting. And don't forget about our selection of thousands of high-quality antibodies from the expertise of Chemicon® and Upstate®!

**ORDERING INFORMATION**

Description	Qty/Pk	Catalogue No.
<b>PureProteome Nickel Magnetic Beads</b>		
PureProteome Nickel Magnetic Beads	2 x 1 mL	LSKMAGH02
PureProteome Nickel Magnetic Beads	10 mL	LSKMAGH10
Magna GriP™ Rack	8 sample holder	20-400

Description	Qty/Pk	Catalogue No.
<b>Antibodies to Histidine Tags</b>		
Anti-His Tag, clone 4D11	200 µg	05-531
Anti-His Tag, clone 4D11, biotin conjugate	100 µg	16-200
Anti-His Tag, clone 4D11, Alexa Fluor® 488 conjugate	100 µg	16-254

Description	NMWL *	Color	Qty/Pk	Catalogue No.
<b>Protein Concentration</b>				
<b>0.5 mL samples</b>				
Microcon® YM-3 Centrifugal Filter Unit	3	Yellow	24	42403
Microcon YM-10 Centrifugal Filter Unit	10	Green	24	42406
Microcon YM-30 Centrifugal Filter Unit	30	Clear	24	42409
Microcon YM-50 Centrifugal Filter Unit	50	Rose	24	42415
Microcon YM-100 Centrifugal Filter Unit	100	Blue	24	42412
<b>2-4 mL samples</b>				
Amicon Ultra-4 Centrifugal Filter Unit with Ultracel®-3 membrane	3		24	UFC8 003 24
Amicon Ultra-4 Centrifugal Filter Unit with Ultracel-10 membrane	10		24	UFC8 010 24
Amicon Ultra-4 Centrifugal Filter Unit with Ultracel-30 membrane	30		24	UFC8 030 24

\* Nominal Molecular Weight Limit or membrane cut-off in kDa