

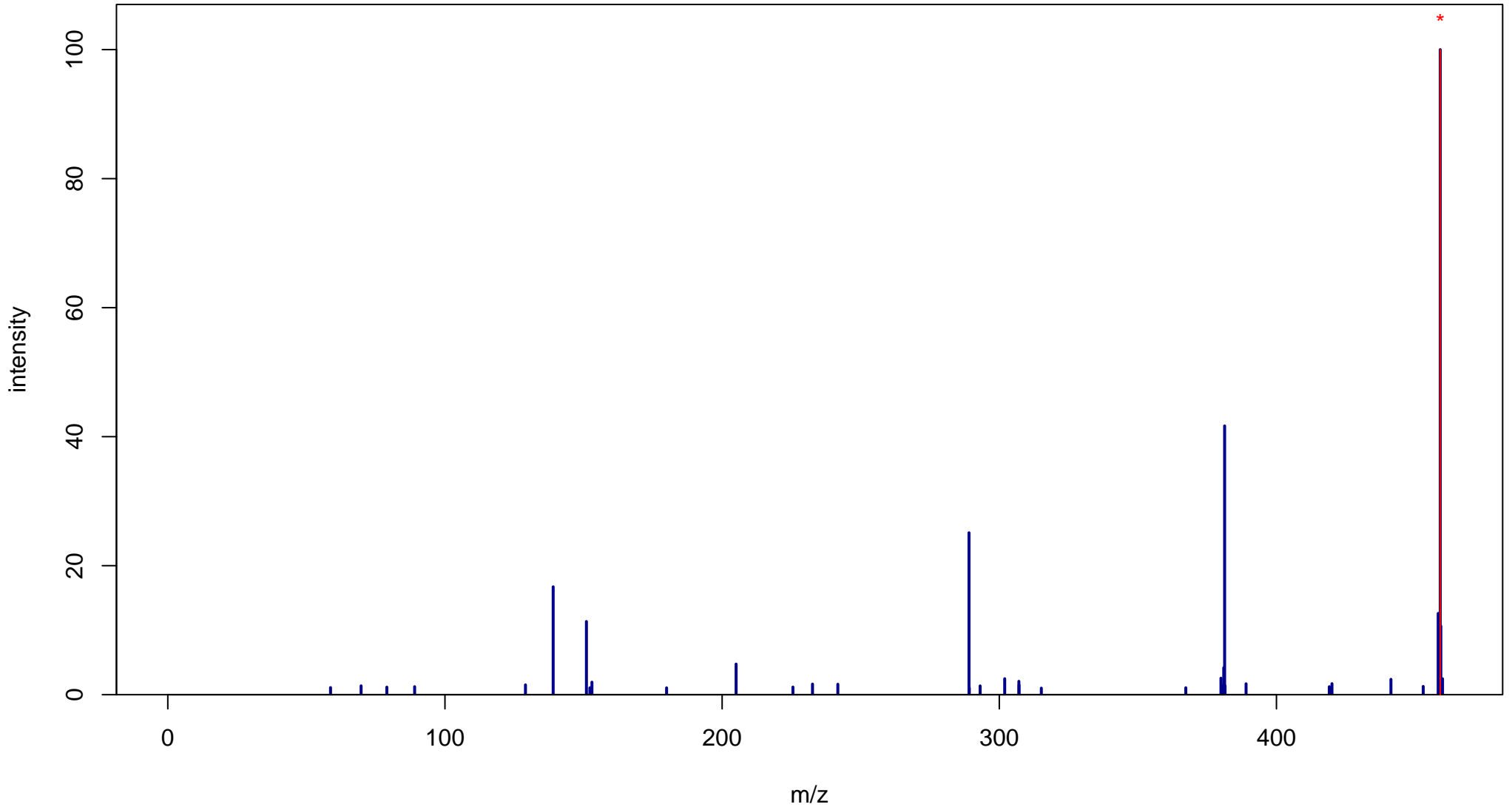
NA

Mass: 458.0849 Formula: C₂₂H₁₈O₁₁

mode: + collisionE: 0V

METLIN ID: 3550 SIGMA Prod: E4268

http://metlin.scripps.edu/metabo_info.php?molid=3550



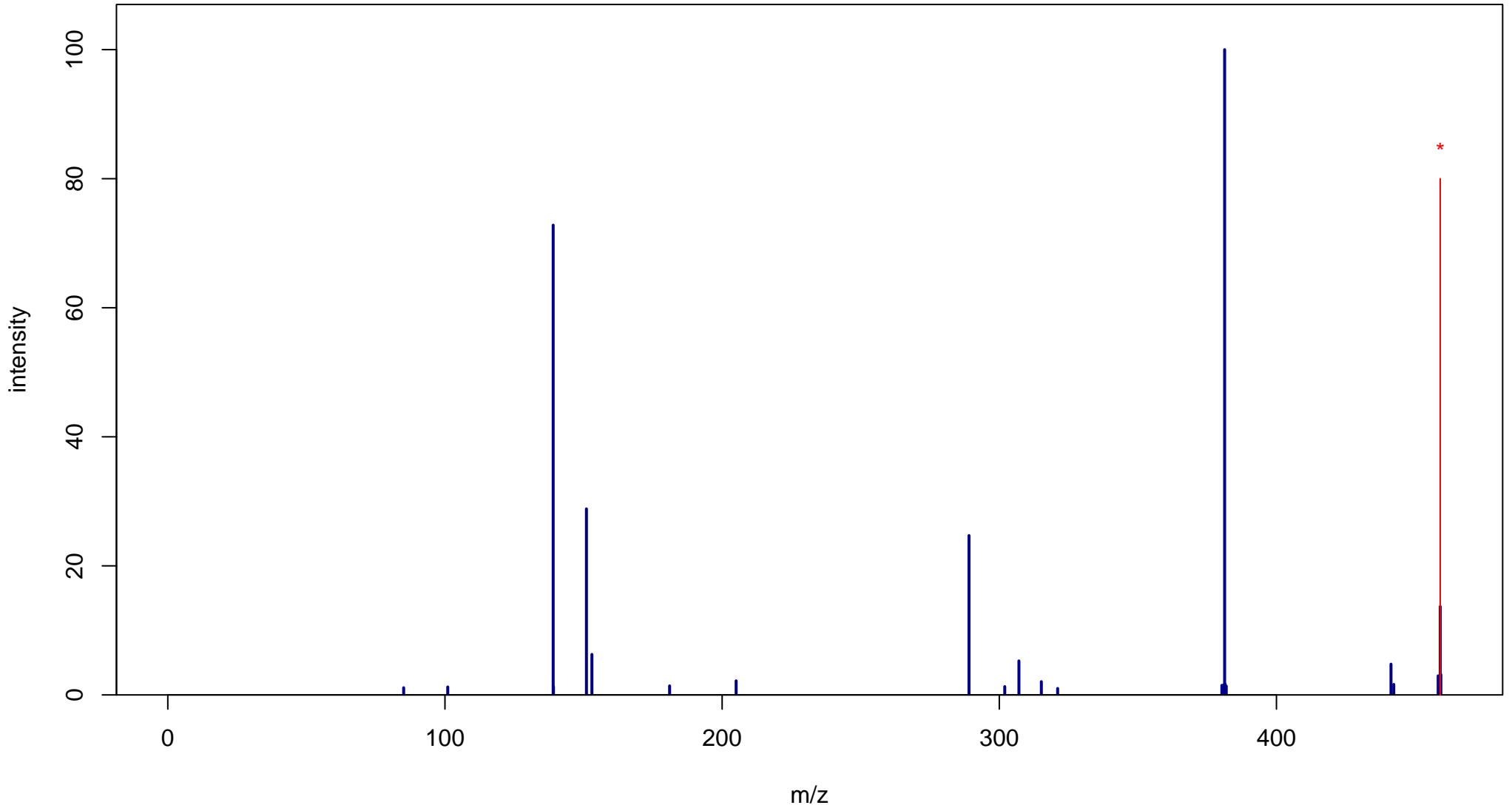
NA

Mass: 458.0849 Formula: C₂₂H₁₈O₁₁

mode: + collisionE: 10V

METLIN ID: 3550 SIGMA Prod: E4268

http://metlin.scripps.edu/metabo_info.php?molid=3550



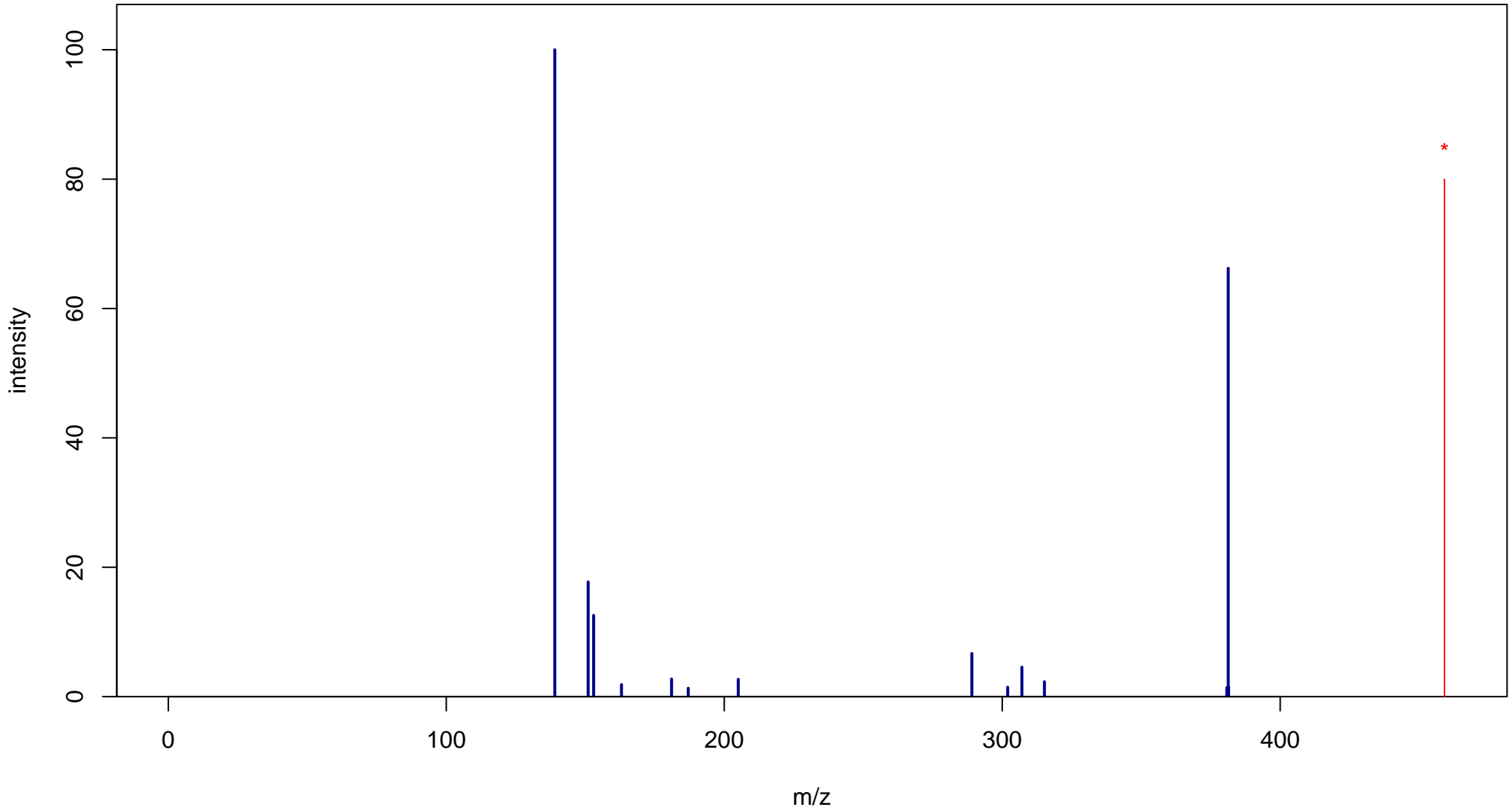
NA

Mass: 458.0849 Formula: C₂₂H₁₈O₁₁

mode: + collisionE: 20V

METLIN ID: 3550 SIGMA Prod: E4268

http://metlin.scripps.edu/metabo_info.php?molid=3550



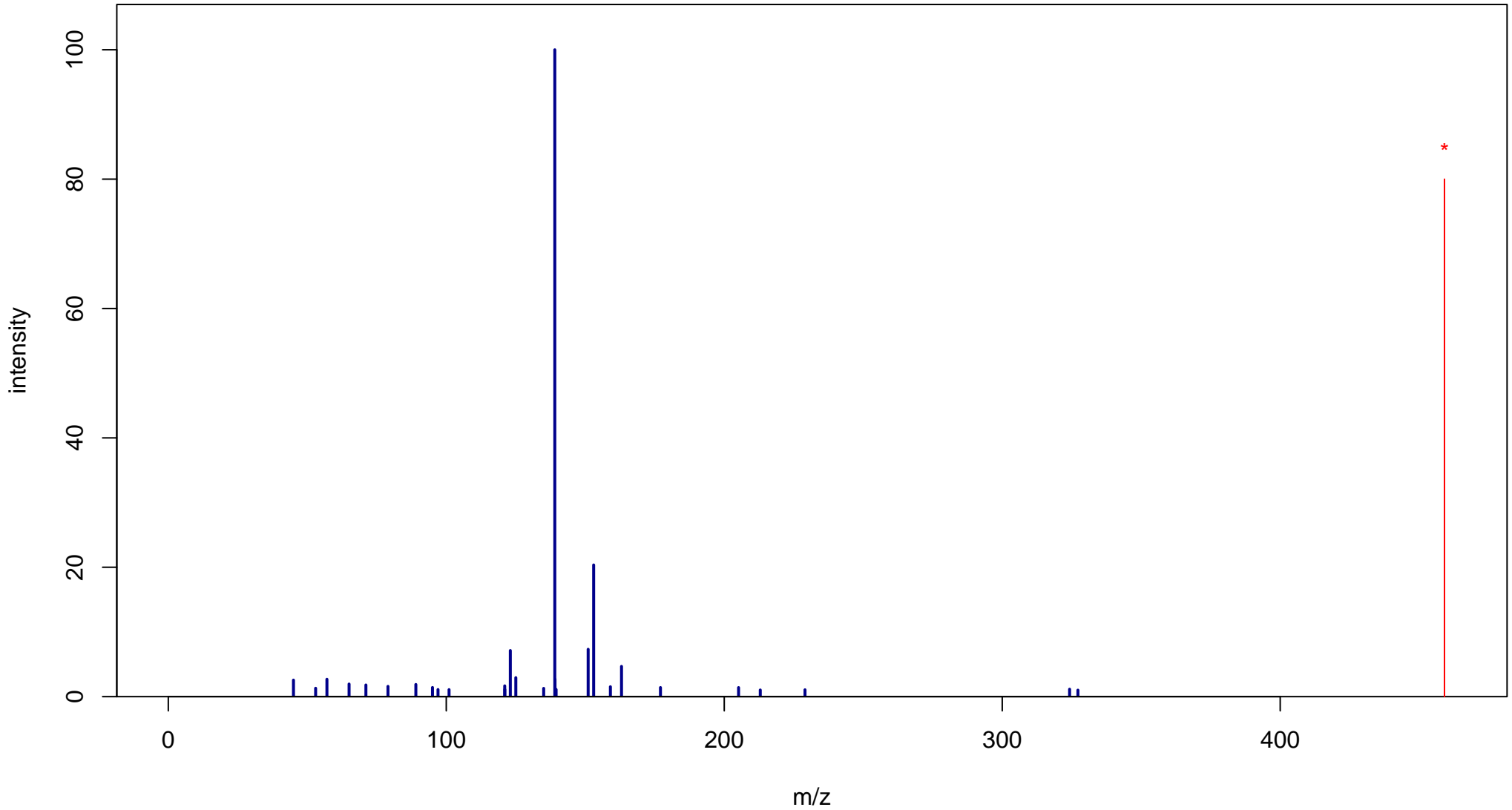
NA

Mass: 458.0849 Formula: C₂₂H₁₈O₁₁

mode: + collisionE: 40V

METLIN ID: 3550 SIGMA Prod: E4268

http://metlin.scripps.edu/metabo_info.php?molid=3550



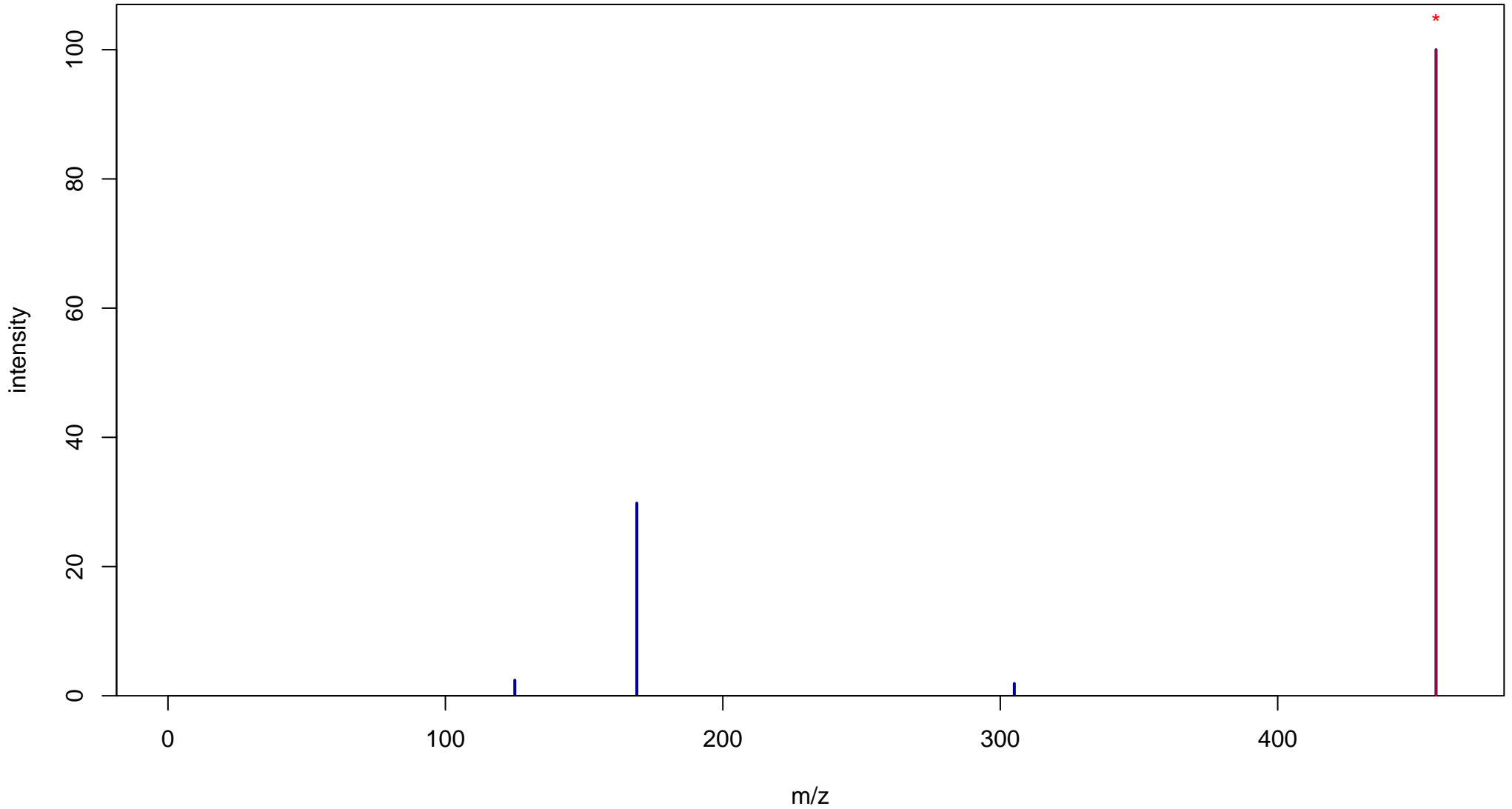
NA

Mass: 458.0849 Formula: C₂₂H₁₈O₁₁

mode: - collisionE: 0V

METLIN ID: 3550 SIGMA Prod: E4268

http://metlin.scripps.edu/metabo_info.php?molid=3550



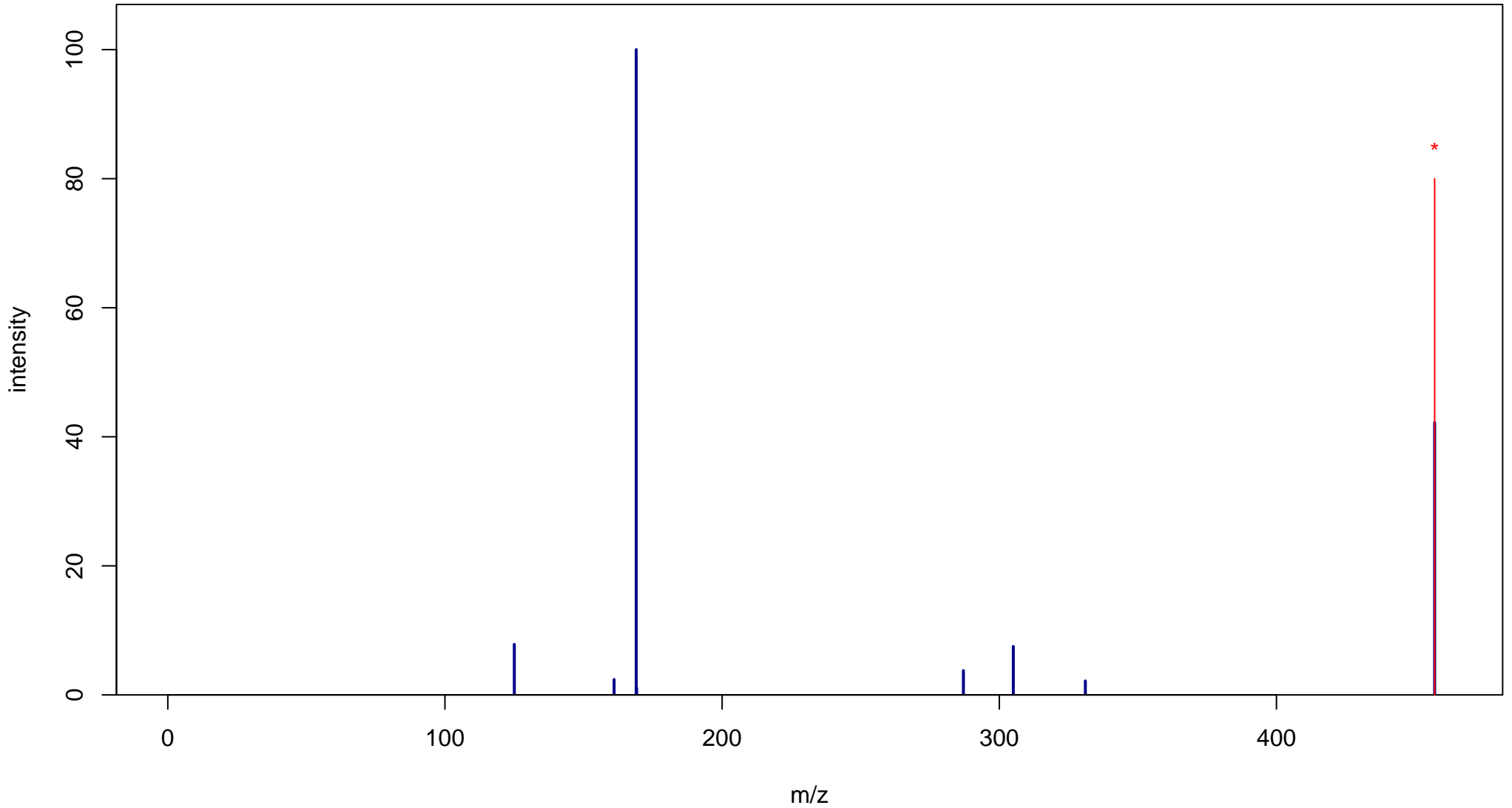
NA

Mass: 458.0849 Formula: C₂₂H₁₈O₁₁

mode: - collisionE: 10V

METLIN ID: 3550 SIGMA Prod: E4268

http://metlin.scripps.edu/metabo_info.php?molid=3550



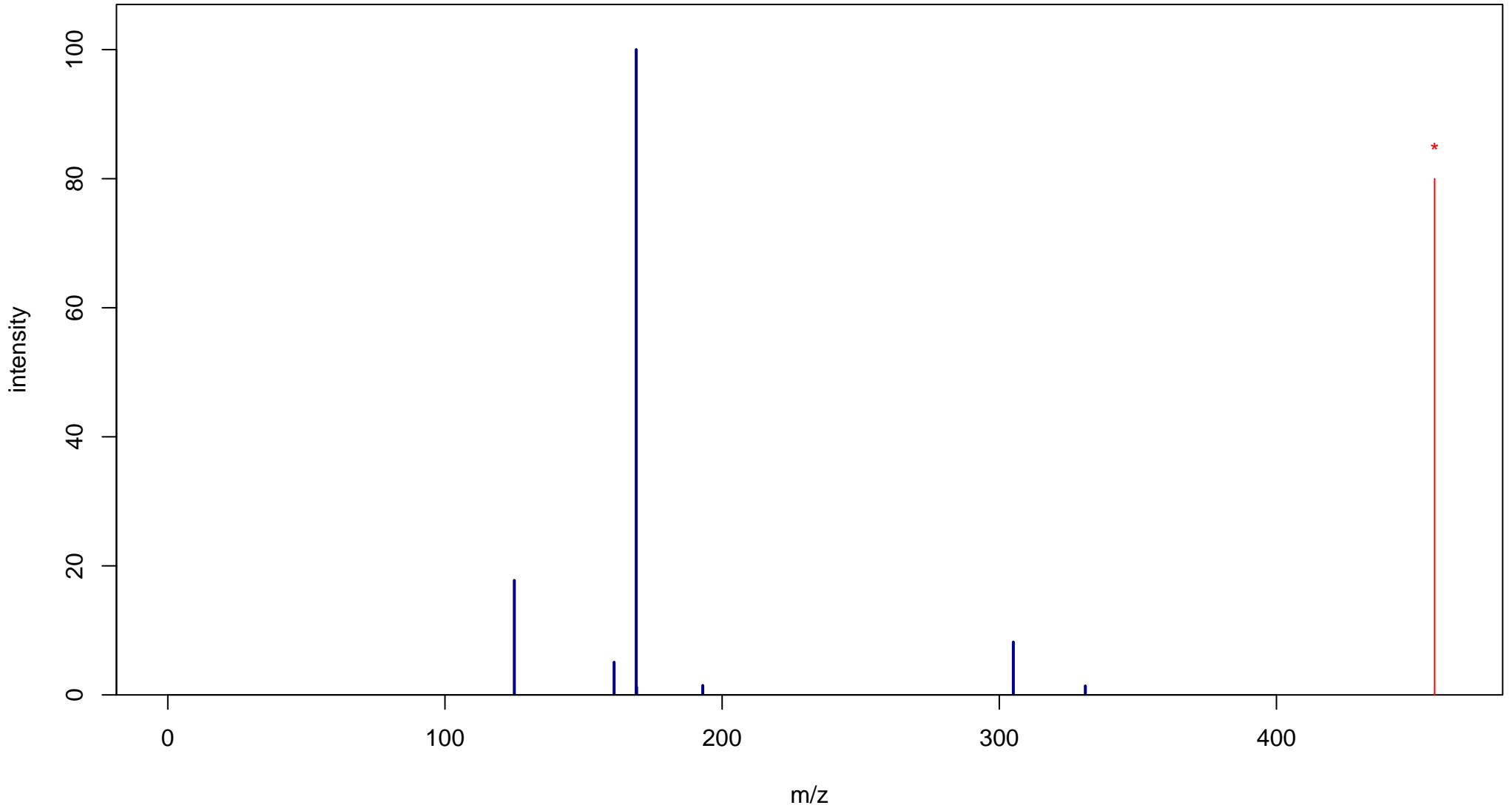
NA

Mass: 458.0849 Formula: C₂₂H₁₈O₁₁

mode: - collisionE: 20V

METLIN ID: 3550 SIGMA Prod: E4268

http://metlin.scripps.edu/metabo_info.php?molid=3550



NA

Mass: 458.0849 Formula: C₂₂H₁₈O₁₁

mode: - collisionE: 40V

METLIN ID: 3550 SIGMA Prod: E4268

http://metlin.scripps.edu/metabo_info.php?molid=3550

