



3050 Spruce Street
Saint Louis, Missouri 63103 USA
Telephone (800) 325-5832 (314) 771-5765
Fax (314) 286-7828
email: techserv@sial.com
sigma-aldrich.com

Product Information

Cat. No. G6633
DL-GLUTETHIMIDE--DEA SCHEDULE II

Sedative; hypnotic.

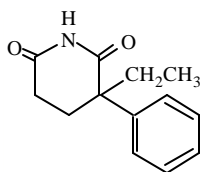
Mol. Formula: C₁₃H₁₅NO₂

Mol. Wt.: 217.26 (anhyd.)

m.p.: 84-86°C

CAS Registry No.: 77-21-4

Chemical Name: (±)-3-Ethyl-3-phenyl-2,6-piperidinedione



Physical Properties: White solid.

Caution: While no human toxicity data is available for this substance, it should be handled with care. Precautions should be taken to avoid contact by all routes of exposure. RTECS No. MA4725000.

Storage: Store tightly sealed at room temperature.

Solubility: Soluble in ethanol, methanol or aqueous base; sparingly soluble in water (0.3 mg/ml). Solubility in 45% (w/v) aqueous 2-hydroxypropyl-β-cyclodextrin (Cat. No. H-107): 6.0 mg/ml.

Disposal: Dissolve or mix the compound with a combustible solvent and burn in a chemical incinerator equipped with an afterburner and scrubber. This product is controlled by the Drug Enforcement Administration. Appropriate security must be maintained until the substance is destroyed. Records must be kept which detail the ultimate disposition of the material. OBSERVE ALL LOCAL, STATE AND FEDERAL LAWS.

References:

1. *Merck Index 12th Ed.*, No. 4485.
2. *Goodman and Gilman's The Pharmacological Basis of Therapeutics 9th Ed.*, pp. 380-383 (1996).

CONTROLLED SUBSTANCE - DEA LICENSE REQUIRED (II)

Sigma-RBI brand products are sold through Sigma-Aldrich, Inc.

Sigma-Aldrich, Inc. warrants that its products conform to the information contained in this and other Sigma-Aldrich publications. Purchaser must determine the suitability of the product(s) for their particular use. Additional terms and conditions may apply.

Please see reverse side of the invoice or packing slip.