

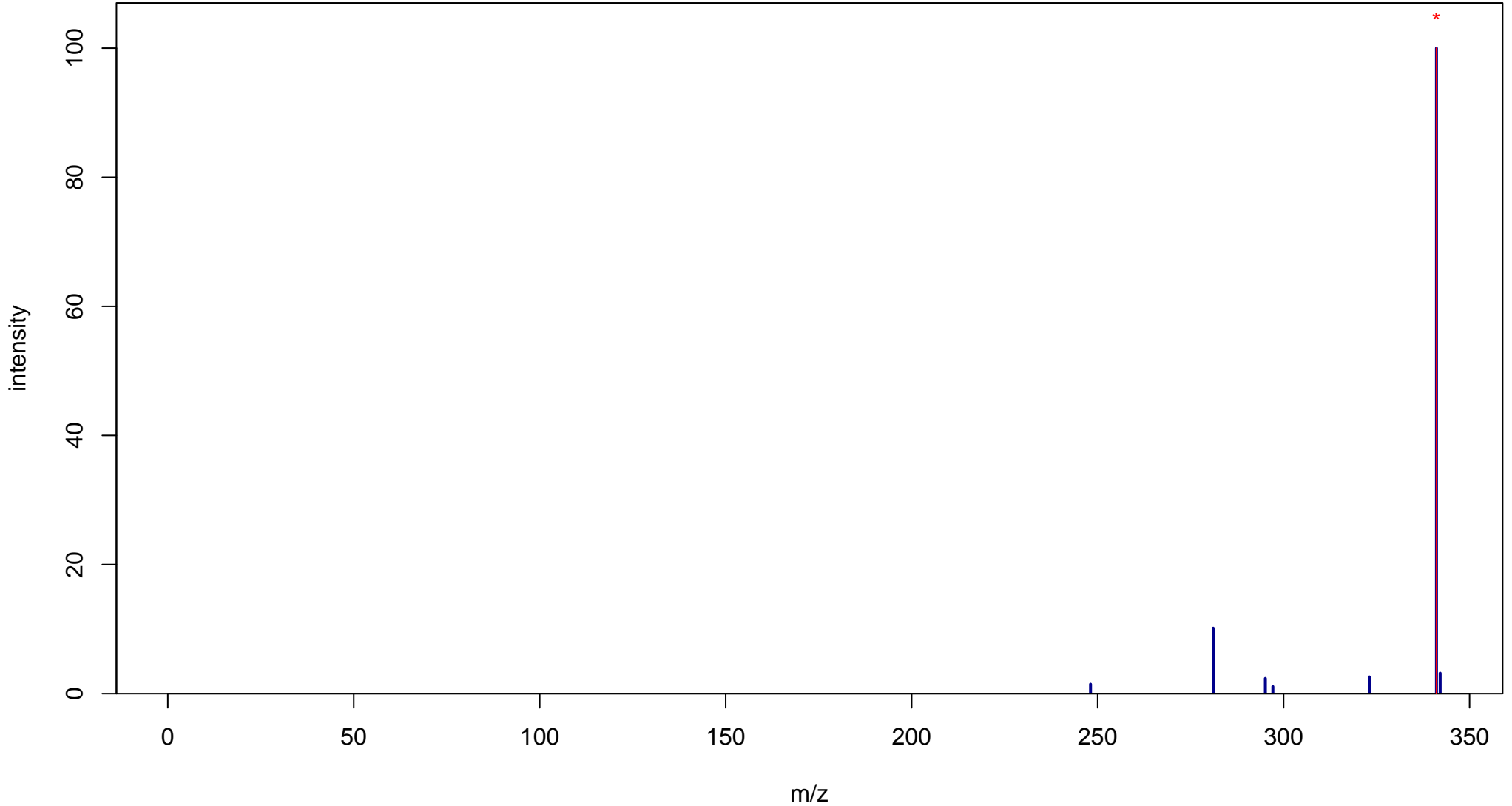
# Sulindac sulfide

Mass: 340.0933 Formula: C<sub>20</sub>H<sub>17</sub>FO<sub>2</sub>S

mode: + collisionE: 0V

METLIN ID: 2605 SIGMA Prod: S3131

[http://metlin.scripps.edu/metabo\\_info.php?molid=2605](http://metlin.scripps.edu/metabo_info.php?molid=2605)



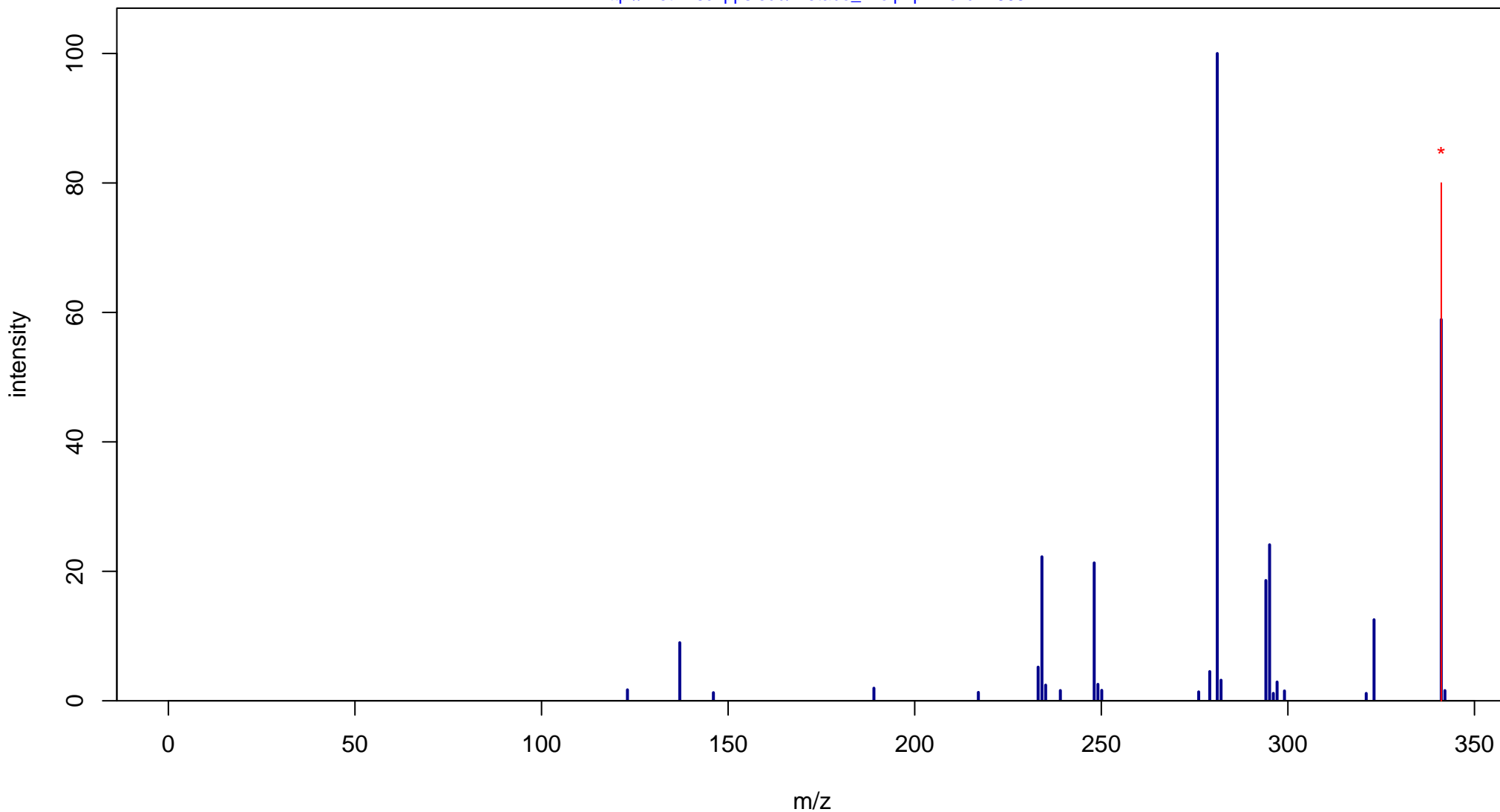
# Sulindac sulfide

Mass: 340.0933 Formula: C<sub>20</sub>H<sub>17</sub>FO<sub>2</sub>S

mode: + collisionE: 10V

METLIN ID: 2605 SIGMA Prod: S3131

[http://metlin.scripps.edu/metabo\\_info.php?molid=2605](http://metlin.scripps.edu/metabo_info.php?molid=2605)



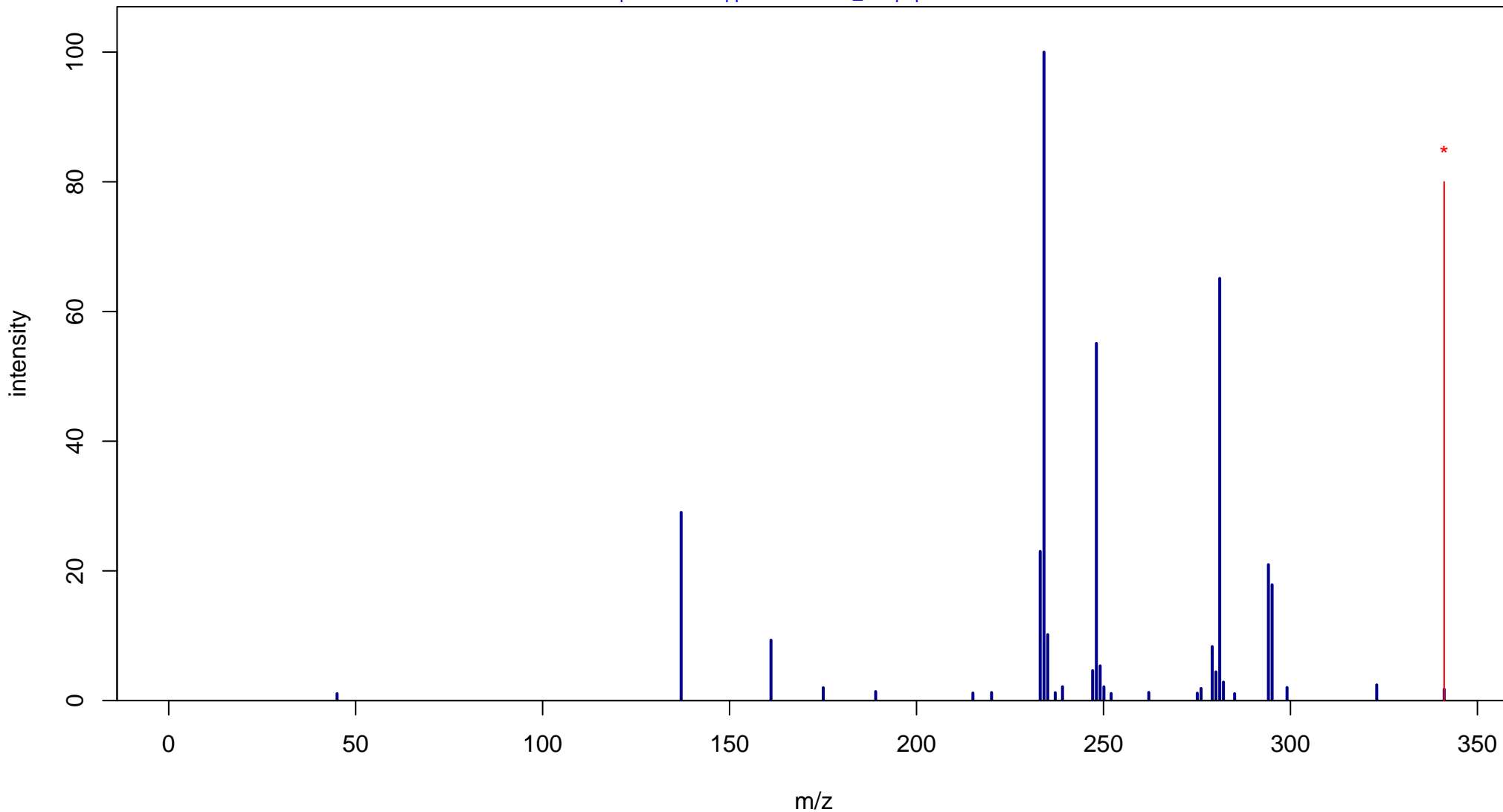
# Sulindac sulfide

Mass: 340.0933 Formula: C<sub>20</sub>H<sub>17</sub>FO<sub>2</sub>S

mode: + collisionE: 20V

METLIN ID: 2605 SIGMA Prod: S3131

[http://metlin.scripps.edu/metabo\\_info.php?molid=2605](http://metlin.scripps.edu/metabo_info.php?molid=2605)



# Sulindac sulfide

Mass: 340.0933 Formula: C<sub>20</sub>H<sub>17</sub>FO<sub>2</sub>S

mode: + collisionE: 40V

METLIN ID: 2605 SIGMA Prod: S3131

[http://metlin.scripps.edu/metabo\\_info.php?molid=2605](http://metlin.scripps.edu/metabo_info.php?molid=2605)

