

## Quick Start Guide

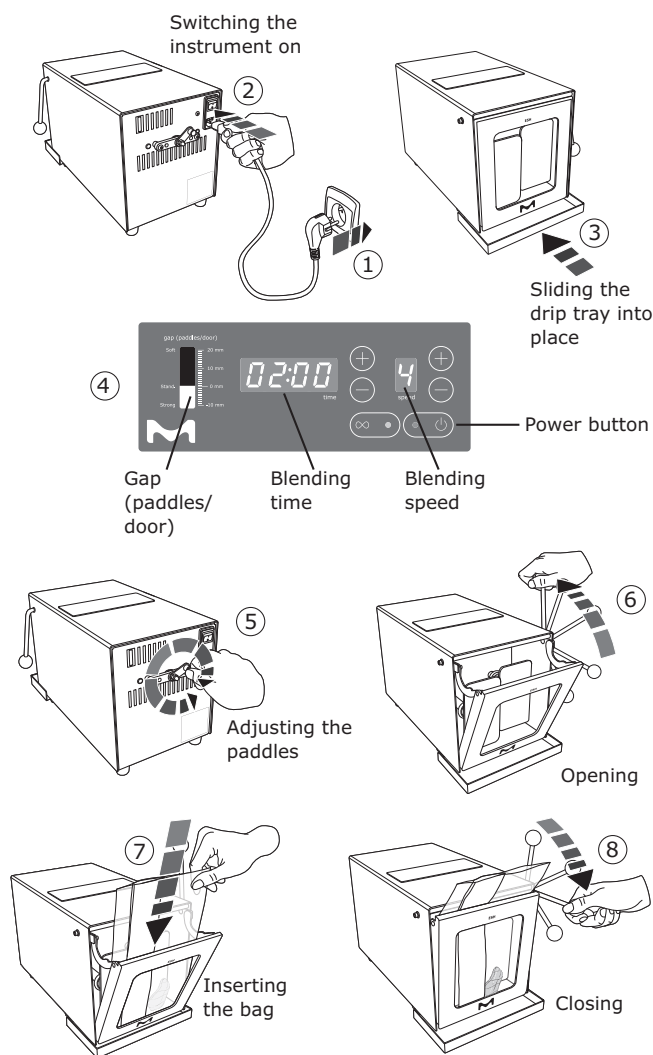
# Enrichment Sample Homogenizer (ESH)

### Safety Notes

- Only qualified personnel should use and maintain the ESH instrument.
- Always use the ESH instrument with a grounding plug.
- In normal use, limit the non-stop cycle to 15 minutes.
- Read the user guide before use.

### Using the ESH Instrument

1. Use the ESH instrument only on a flat, stable surface.
2. Plug the power cord into the electrical power source. ①
3. Turn the main switch to the “|” position. ②
4. Slide the drip tray under the blending chamber. ③
5. Press the power button on the digital display/control panel.
6. On the digital display/control panel, adjust the blending time setting and the blending speed setting. ④
7. Use the crank on the back to adjust the paddles. This changes the size of the blending chamber to suit the nature and size of the sample. Maximum capacity is 400 cubic centimeters. ⑤
8. Pull the lever up and back to open the door, ⑥ and insert the sterile bag that contains the sample and diluting fluid. ⑦
9. While holding the bag, close the door and lower the lever until it clicks. ⑧ The ESH instrument starts, blends the sample, and stops automatically.
10. Open the door and lift out the bag.



## Cleaning the ESH Instrument

1. Turn the main switch to the "O" position. Unplug the power cord from the electrical outlet.
2. Lift the lever to open the door. Unhook the lower edge of the door from the axis bar, swing the lower edge of the door upward, and lay the door flat on top of the instrument.
3. Remove the paddles by pressing the back of the paddles until they click. ⑨
4. Clean the blending chamber and paddles with a stainless cleaning product. ⑩  
Autoclave the paddles if necessary.
5. Lubricate the paddle rods with silicone lubricant applied with sprayer or brush.
6. Replace the paddles by clicking them into place. ⑪
7. Swing the door back into place, making sure it is correctly positioned on the lower axis bar.
8. Ensure that the instrument is not damp before plugging the power cord into the electrical outlet and turning the main switch to the "I" position.



## Troubleshooting

| Technical issue  | Solution   |
|--|--|
| <b>The ESH instrument does not start.</b>  | Ensure the power cord is connected.  |
|  | Ensure that the power switch is in the on position: "I".   |
|  | Ensure that the mixer door is correctly positioned and closed. Do not force the door.                            |
|  | Ensure that the fuses are functional.  |
|  | Ensure that power supply voltage is correct.   |
| <b>The door does not close correctly.</b>  | Ensure that the door is correctly positioned on the axis bar at the bottom of the door. (Do not force the door.) |
| <b>Blending time is wrong.</b>   | Adjust the blending time setting.  |
| <b>Blending speed is wrong.</b>  | Adjust the blending speed setting.   |
| <b>Bags leak during the cycle or when blending is complete</b>                         | Use only sterile enrichment bags that are robust and designed for blending.                                      |
| <b>Blending is not satisfactory, especially when blending hard or heavy materials.</b> | Adjust the paddle position using the crank at the back of the instrument.  |
|  | Reduce blending speed.   |

The Enrichment Sample Homogenizer (ESH) catalog number is 5623360001.

For further details, see the Enrichment Sample Homogenizer User Guide.

For technical support, go to [sigmaldrich.com/techservice](https://www.sigmaldrich.com/techservice).

MilliporeSigma  
400 Summit Drive  
Burlington, MA 01803

[sigmaldrich.com/dilutionpreparation](https://www.sigmaldrich.com/dilutionpreparation)

