

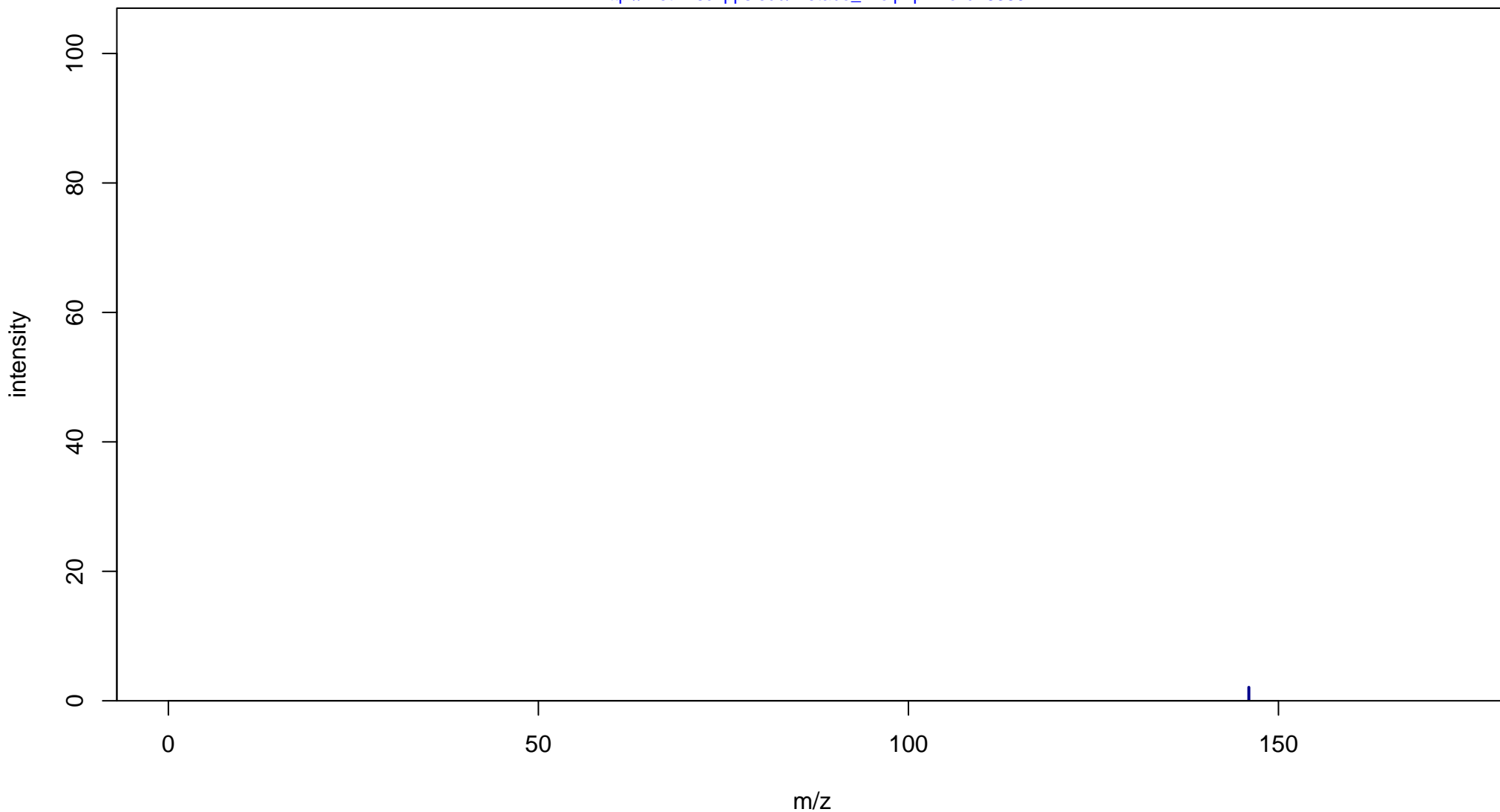
DL-2-Amino-3-phosphonopropionic acid

Mass: 169.014 Formula: C₃H₈NO₅P

mode: + collisionE: 0V

METLIN ID: 5359 SIGMA Prod: A4910

http://metlin.scripps.edu/metabo_info.php?molid=5359



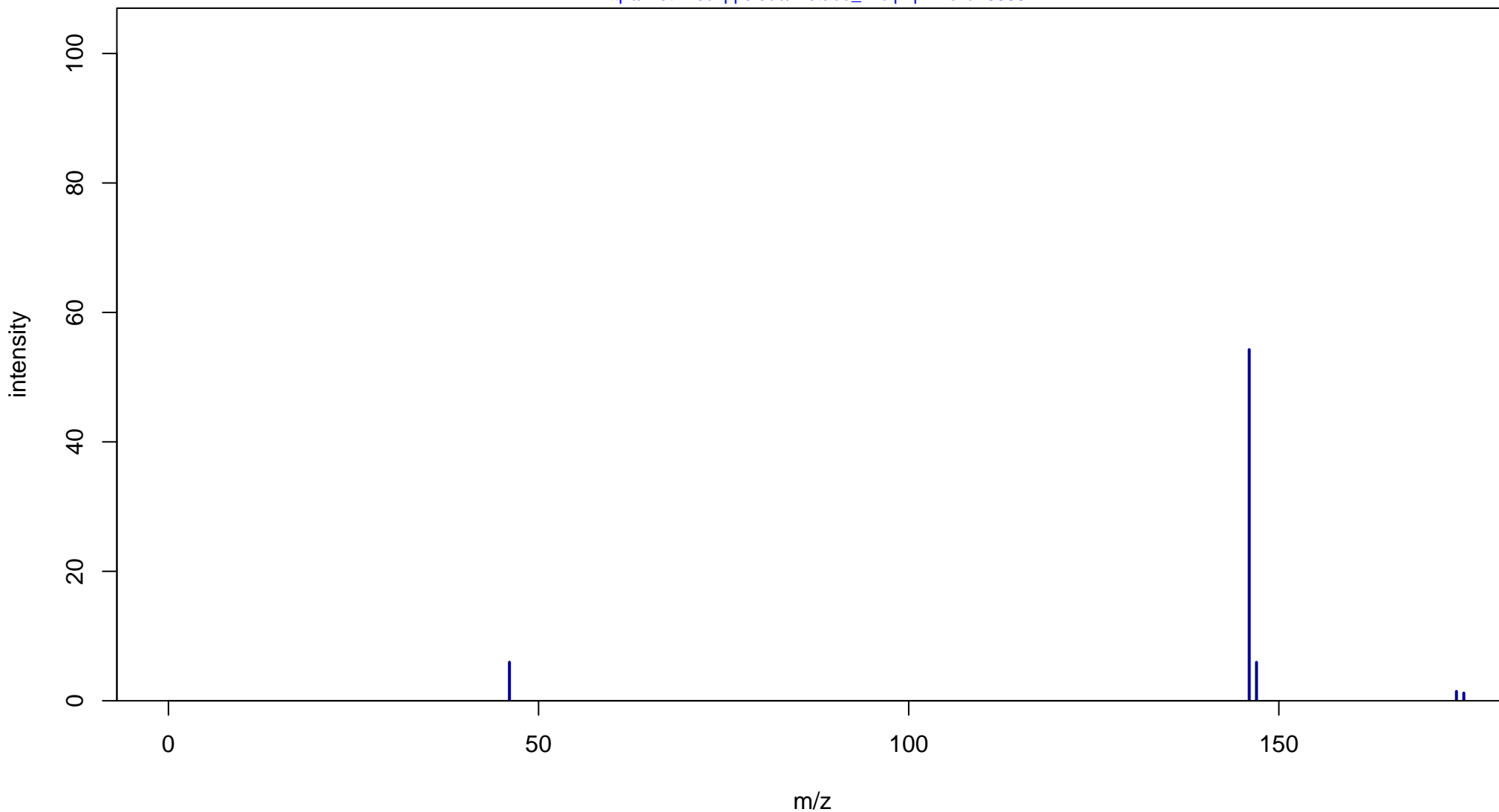
DL-2-Amino-3-phosphonopropionic acid

Mass: 169.014 Formula: C₃H₈NO₅P

mode: + collisionE: 10V

METLIN ID: 5359 SIGMA Prod: A4910

http://metlin.scripps.edu/metabo_info.php?molid=5359



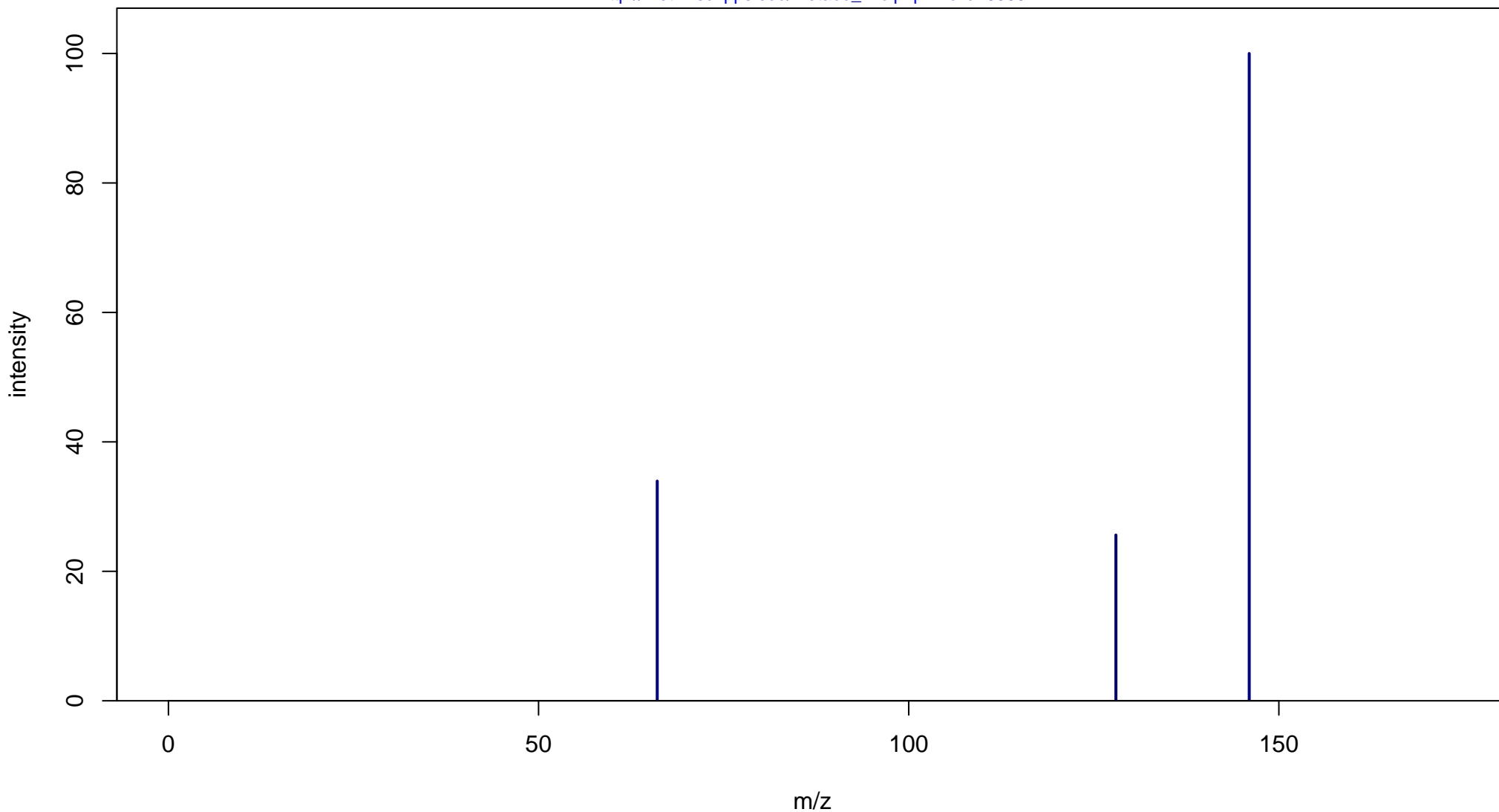
DL-2-Amino-3-phosphonopropionic acid

Mass: 169.014 Formula: C₃H₈NO₅P

mode: + collisionE: 20V

METLIN ID: 5359 SIGMA Prod: A4910

http://metlin.scripps.edu/metabo_info.php?molid=5359



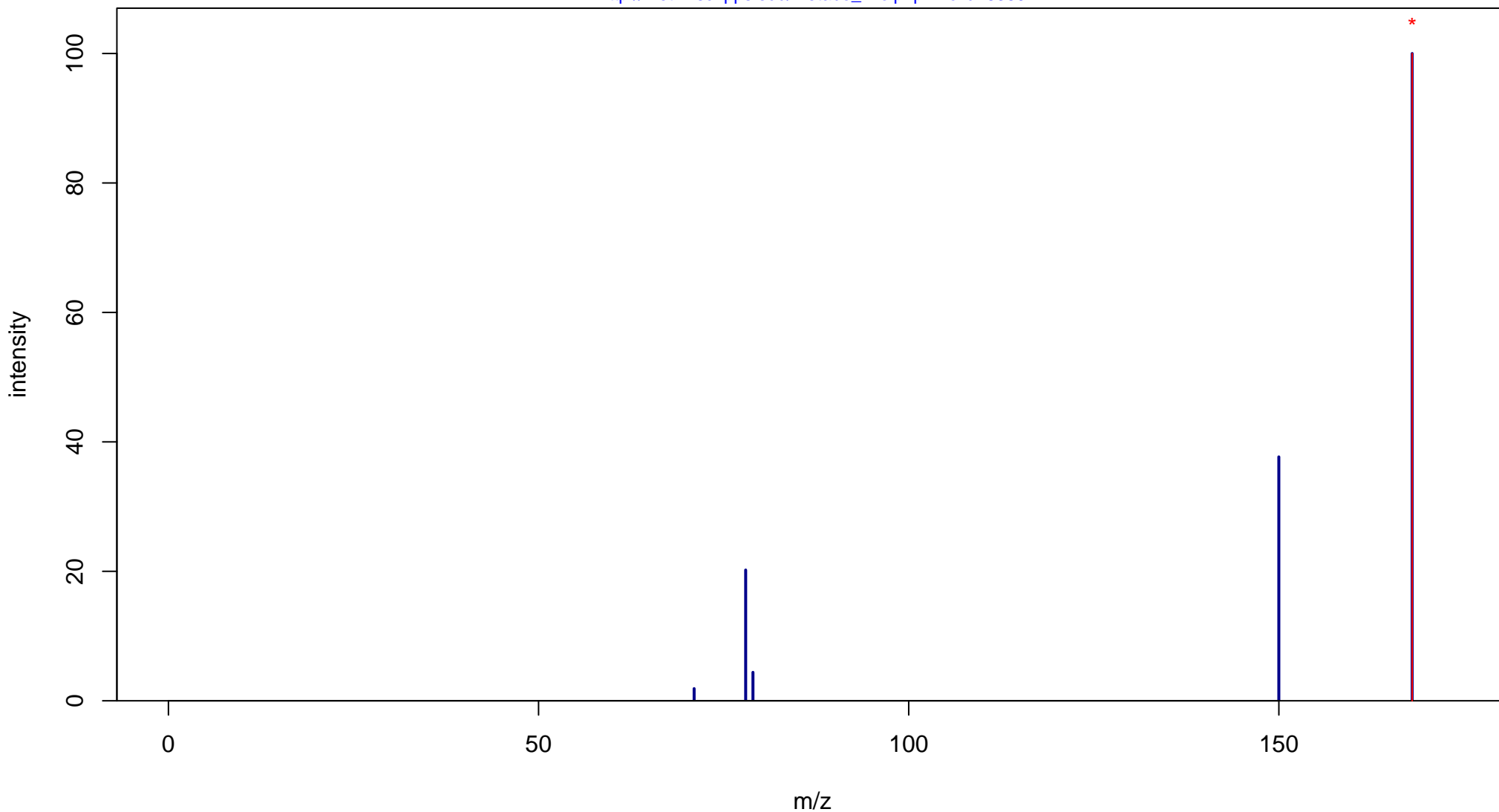
DL-2-Amino-3-phosphonopropionic acid

Mass: 169.014 Formula: C₃H₈NO₅P

mode: - collisionE: 0V

METLIN ID: 5359 SIGMA Prod: A4910

http://metlin.scripps.edu/metabo_info.php?molid=5359



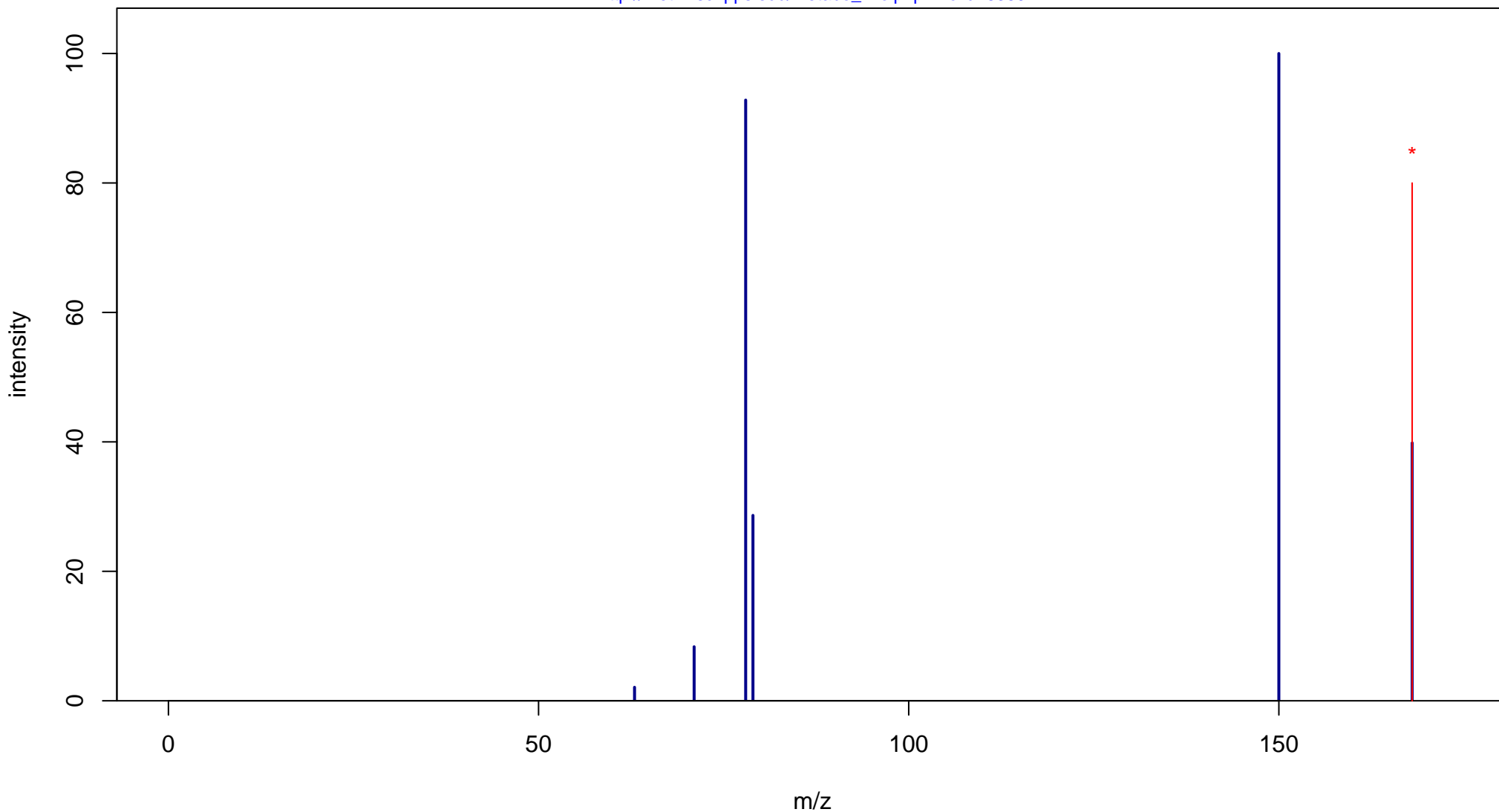
DL-2-Amino-3-phosphonopropionic acid

Mass: 169.014 Formula: C₃H₈NO₅P

mode: - collisionE: 10V

METLIN ID: 5359 SIGMA Prod: A4910

http://metlin.scripps.edu/metabo_info.php?molid=5359



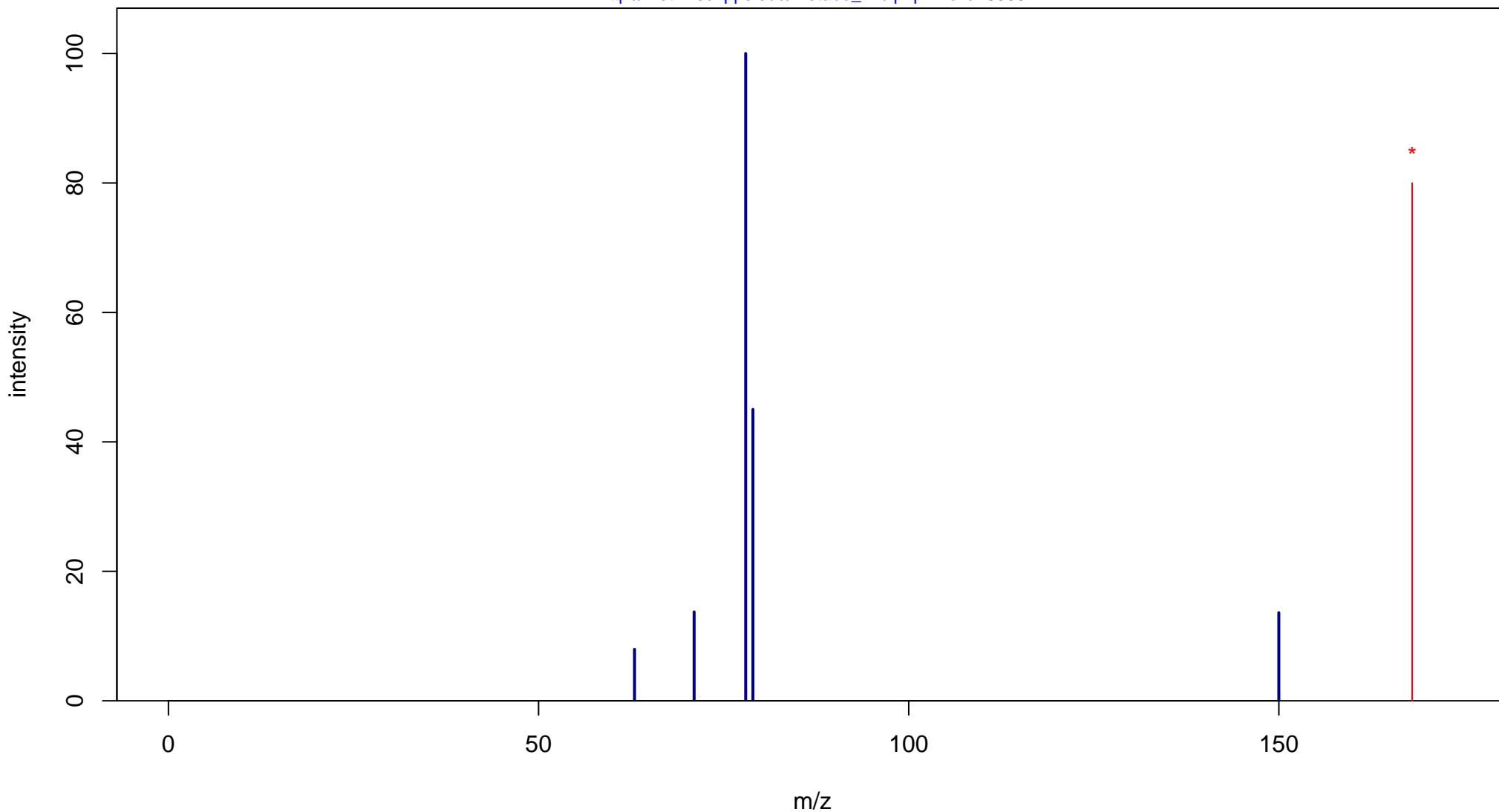
DL-2-Amino-3-phosphonopropionic acid

Mass: 169.014 Formula: C₃H₈NO₅P

mode: - collisionE: 20V

METLIN ID: 5359 SIGMA Prod: A4910

http://metlin.scripps.edu/metabo_info.php?molid=5359



DL-2-Amino-3-phosphonopropionic acid

Mass: 169.014 Formula: C₃H₈NO₅P

mode: - collisionE: 40V

METLIN ID: 5359 SIGMA Prod: A4910

http://metlin.scripps.edu/metabo_info.php?molid=5359

