

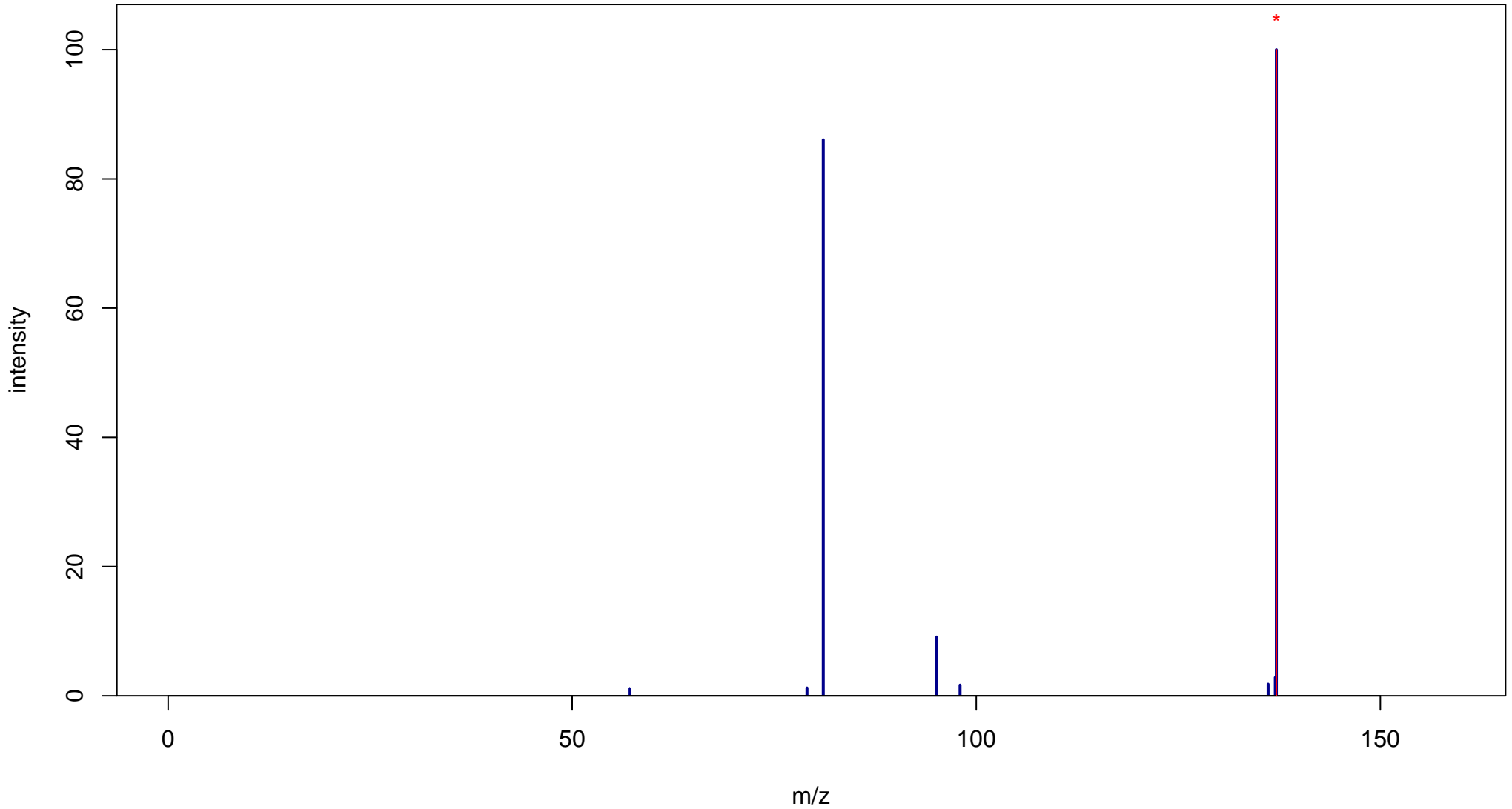
Geraniol

Mass: 154.1358 Formula: C₁₀H₁₈O

mode: + collisionE: 0V

METLIN ID: 41060 SIGMA Prod: 163333

http://metlin.scripps.edu/metabo_info.php?molid=41060



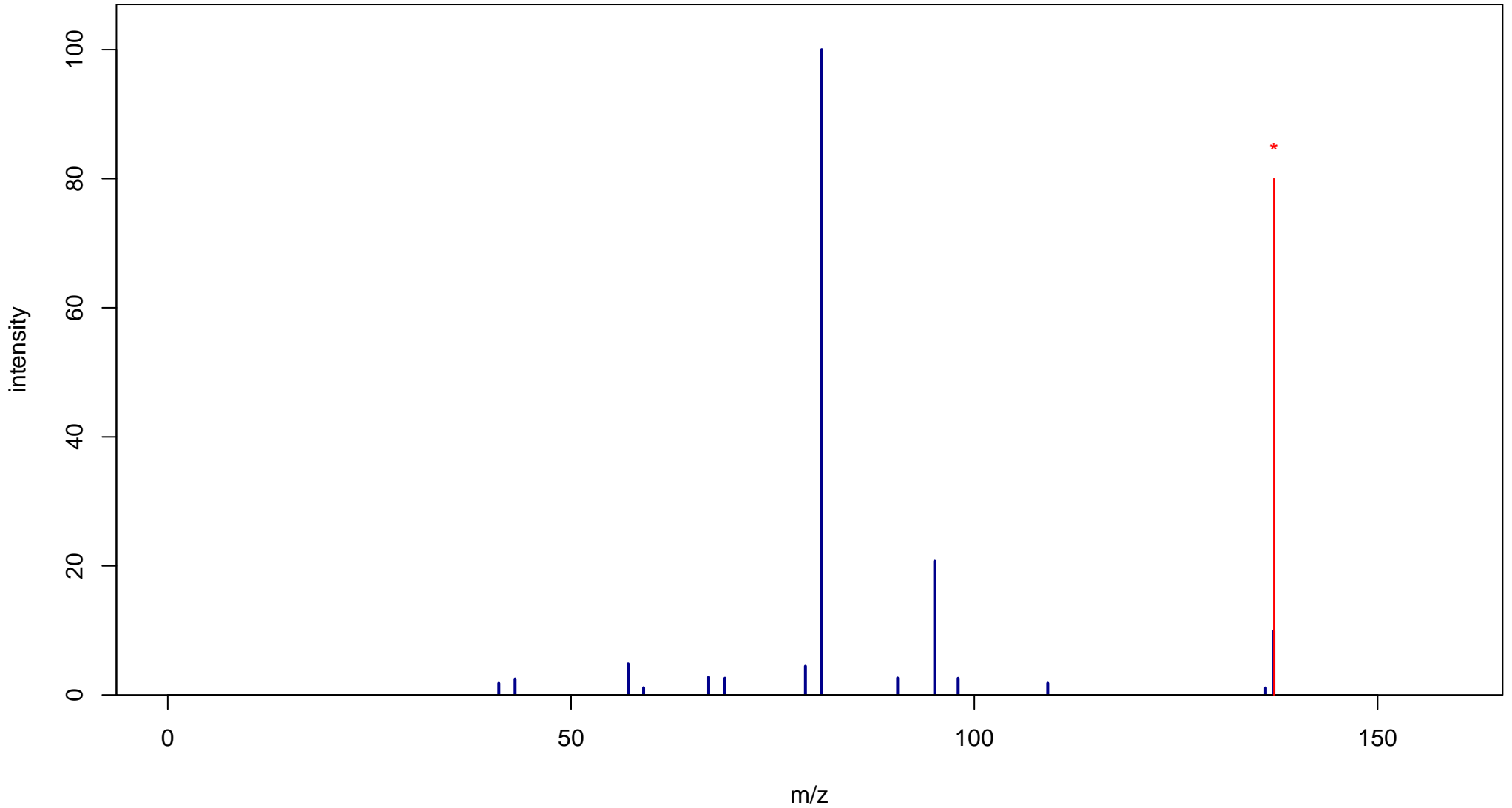
Geraniol

Mass: 154.1358 Formula: C₁₀H₁₈O

mode: + collisionE: 10V

METLIN ID: 41060 SIGMA Prod: 163333

http://metlin.scripps.edu/metabo_info.php?molid=41060



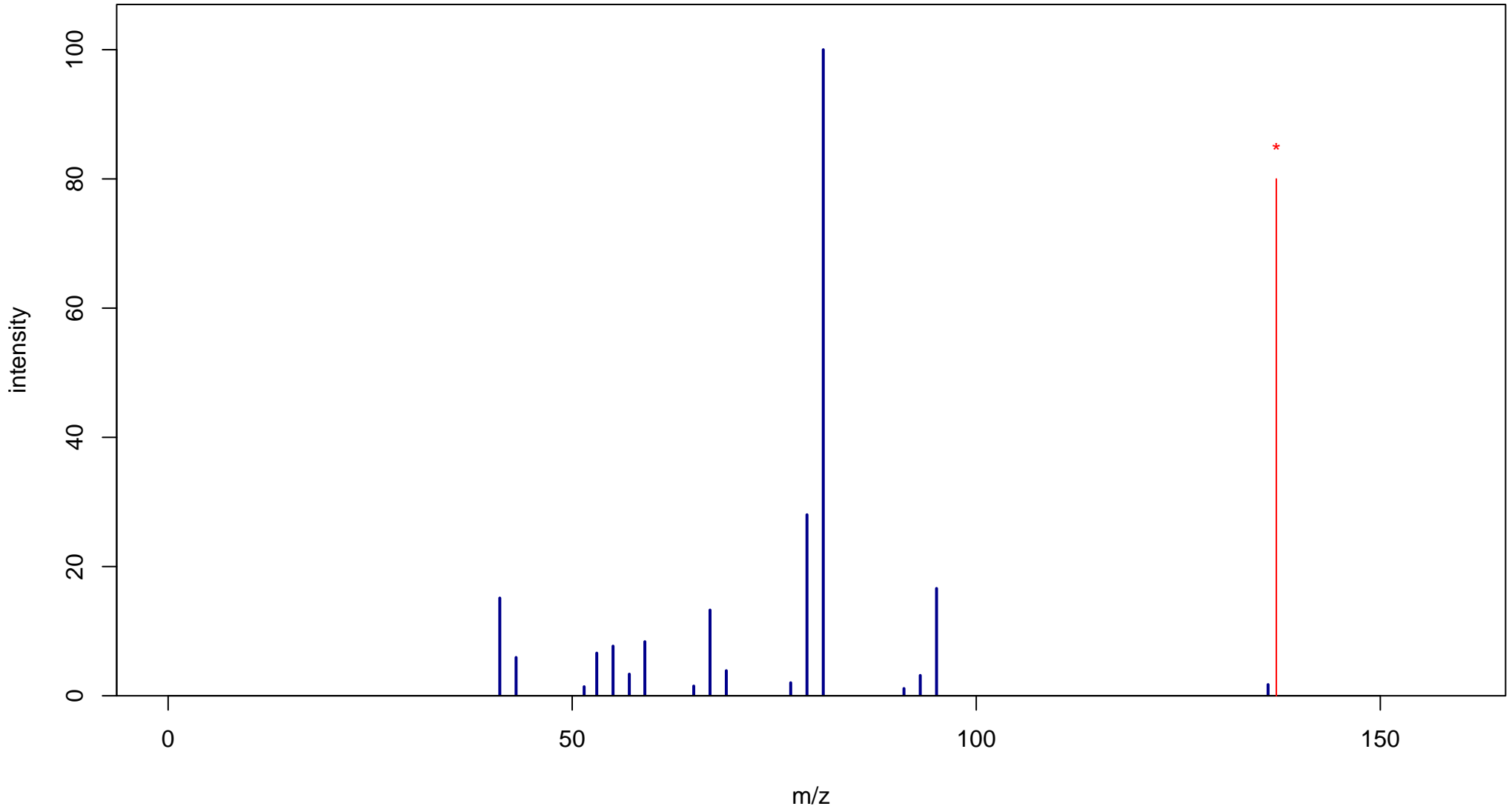
Geraniol

Mass: 154.1358 Formula: C₁₀H₁₈O

mode: + collisionE: 20V

METLIN ID: 41060 SIGMA Prod: 163333

http://metlin.scripps.edu/metabo_info.php?molid=41060



Geraniol

Mass: 154.1358 Formula: C₁₀H₁₈O

mode: + collisionE: 40V

METLIN ID: 41060 SIGMA Prod: 163333

http://metlin.scripps.edu/metabo_info.php?molid=41060

