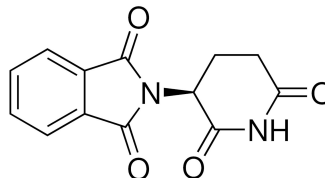


# Certificate of Analysis

**Product Name :** (-)-Thalidomide >98%, solid  
**Product Number :** T150-10MG  
**Batch Number :** 0000071854  
**Source Batch :** 0000054605  
**CAS Number :** 841-67-8  
**Molecular Formula :** C<sub>13</sub>H<sub>10</sub>N<sub>2</sub>O<sub>4</sub>  
**Formula Weight :** 258.23  
**Quality Release Date :** 31 Jan 2019



Test	Specification	Result
Appearance (Color)	White to Beige	Beige
Appearance (Form)	Powder	Powder
Identity	Conforms	Conforms
HPLC co-injection with authentic standard		
Specific Rotation	-70.0 - -50.0 °C	-60.2 °C
C = 1 % in DMF		
Purity (HPLC)	≥ 98.0	99.3
Elemental Composition	Conforms	Conforms
C <sub>13</sub> H <sub>10</sub> N <sub>2</sub> O <sub>4</sub>		

*Champaka. G.*

Champaka Gurudevuru, Manager

Analytical

Bangalore

IN

Sigma-Aldrich warrants, that at the time of the quality release or subsequent retest date this product conformed to the information contained in this publication. The current Specification sheet may be available at Sigma-Aldrich.com. For further inquiries, please contact Technical Service. Purchase must determine the suitability of the product for its particular use. See reverse side of website or packing slip for additional terms and conditions of sale

Version Number: 01 Doc: 1032328

Page 1 of 1

The branding on the header and/or footer of this document may temporarily not visually match the product purchased as we transition our branding. However, all of the information in the document regarding the product remains unchanged and matches the product ordered. For further information please contact mlsbranding@sial.com

