

3050 Spruce Street, Saint Louis, MO 63103, USA

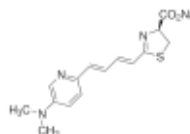
Website: www.sigmaaldrich.comEmail USA: techserv@sial.comOutside USA: eurtechserv@sial.com

Product Specification

Product Name:
seMpai

Product Number: **902268**

Formula: C₁₅H₁₆N₃NaO₂S
 Formula Weight: 325.36 g/mol
 Storage Temperature: -20 °C



TEST	Specification
Appearance (Color)	Dark Yellow to Very Dark Yellow to Very Dark Beige and Brown to Very Dark Brown and Black
Appearance (Form)	Powder or Crystals
¹ H NMR Spectrum	Conforms to Structure
Carbon Content	46.8 - 64.0 %
Nitrogen Content	10.9 - 14.9 %
Sulfur Content	8.3 - 11.4 %
Specific Rotation 1mg/mL in MeOH	-38.0 - -24.0 °
Purity (HPLC)	≥ 84.5 %
ICP Major Analysis Confirms Sodium Component	Confirmed
Recommended Retest Period 1 Year	-----

Specification: PRD.3.ZQ5.10000100665

Sigma-Aldrich warrants, that at the time of the quality release or subsequent retest date this product conformed to the information contained in this publication. The current Specification sheet may be available at Sigma-Aldrich.com. For further inquiries, please contact Technical Service. Purchaser must determine the suitability of the product for its particular use. See reverse side of invoice or packing slip for additional terms and conditions of sale.

