

Product Specification

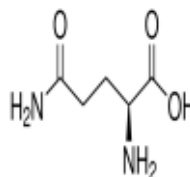
Product Name:
L-Glutamine -

Product Number: **G5792**

CAS Number: 56-85-9

Formula: C₅H₁₀N₂O₃

Formula Weight: 146.14 g/mol



TEST	Specification
Appearance (Color)	White
Appearance (Form)	Powder
Solubility (Turbidity)	Clear
0.5 g to 20 mL of water	
Solubility (Color)	Colorless
0.5 g to 20 mL of water	
Solubility (Form)	Solution
0.5 g to 20 mL of water	
Identification (USP)	Pass
Iron (Fe)	≤ 10 ppm
Loss on Drying (USP)	≤ 0.30 %
Assay	99.0 - 101.0 %
Ammonium	≤ 0.10 %
Chloride	≤ 0.020 %
Cytotoxicity	Pass
pH	4.5 - 6.0
1.0 g in 50 mL water	
Endotoxin Assay	≤ 1 EU/mg
Related Compounds	Pass
Residual Solvents	Meets Requirements
Residue on Ignition	≤ 0.10 %
Arsenic (As)	≤ 1.0 ppm
Specific Rotation	31.5 - 33.0 °
c = 10, 2 N HCl, 20°C	

Sigma-Aldrich warrants, that at the time of the quality release or subsequent retest date this product conformed to the information contained in this publication. The current Specification sheet may be available at Sigma-Aldrich.com. For further inquiries, please contact Technical Service. Purchaser must determine the suitability of the product for its particular use. See reverse side of invoice or packing slip for additional terms and conditions of sale.



Product Specification

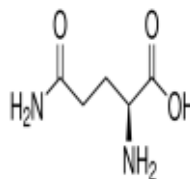
Product Name:
L-Glutamine -

Product Number: **G5792**

CAS Number: 56-85-9

Formula: C₅H₁₀N₂O₃

Formula Weight: 146.14 g/mol



TEST	Specification
Specific Rotation (USP) c = 4, aqueous, dried basis, 20°C	6.3 - 7.3 °
Sulfate (SO ₄)	≤ 0.020 %
Origin	Non-Animal Source

Specification: PRD.2.ZQ5.10000050953

Sigma-Aldrich warrants, that at the time of the quality release or subsequent retest date this product conformed to the information contained in this publication. The current Specification sheet may be available at Sigma-Aldrich.com. For further inquiries, please contact Technical Service. Purchaser must determine the suitability of the product for its particular use. See reverse side of invoice or packing slip for additional terms and conditions of sale.

