

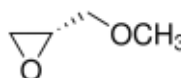
3050 Spruce Street, Saint Louis, MO 63103, USA

Website: www.sigmaaldrich.comEmail USA: techserv@sial.comOutside USA: eurtechserv@sial.com

Product Specification

Product Name:
(R)-(-)-Glycidyl methyl ether - 97%

Product Number: 454680
CAS Number: 64491-70-9
MDL: MFCD00273372
Formula: C₄H₈O₂
Formula Weight: 88.11 g/mol



| TEST | Specification |
|-------------------------------------|-----------------------|
| Appearance (Color) | Colorless |
| Appearance (Form) | Liquid |
| Infrared spectrum | Conforms to Structure |
| Purity (GC) | ≥ 96.5 % |
| Optical Rotation c = 5%; Toluene | -18.0 - -14.0 deg |

Specification: PRD.0.ZQ5.10000046637

Sigma-Aldrich warrants, that at the time of the quality release or subsequent retest date this product conformed to the information contained in this publication. The current Specification sheet may be available at Sigma-Aldrich.com. For further inquiries, please contact Technical Service. Purchaser must determine the suitability of the product for its particular use. See reverse side of invoice or packing slip for additional terms and conditions of sale.