

3050 Spruce Street, Saint Louis, MO 63103, USA

Website: [www.sigmaldrich.com](http://www.sigmaldrich.com)

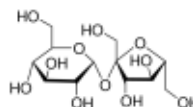
Email USA: [techserv@sial.com](mailto:techserv@sial.com)

Outside USA: [eurtechserv@sial.com](mailto:eurtechserv@sial.com)

## Product Specification

Product Name:  
Sucrose - for molecular biology, ≥99.5% (GC)

**Product Number:** S0389  
**CAS Number:** 57-50-1  
**MDL:** MFCD00006626  
**Formula:** C<sub>12</sub>H<sub>22</sub>O<sub>11</sub>  
**Formula Weight:** 342.30 g/mol



TEST	Specification
Appearance (Color)	White
Appearance (Form)	Crystals
Solubility (Color)	Colorless
Solubility (Turbidity)	Clear
0.5 g/ml H <sub>2</sub> O	
Infrared spectrum	Conforms to Structure
A260 UV Absorption	≤ 0.20
50 g plus 50 mL, H <sub>2</sub> O	
A280 UV Absorption	≤ 0.15
50 g plus 50 mL, H <sub>2</sub> O	
Heavy Metals (as Lead)	< = 5 ppm
RNAse Detection	None Detected
DNAse, Exonuclease Detection	None Detected
Purity (GC)	≥ 99.5 %
Free Glucose	≤ 0.1 %
Protease Impurity	None Detected
Recommended Retest Period	-----
5 Years	

Specification: PRD.1.ZQ5.10000010766

Sigma-Aldrich warrants, that at the time of the quality release or subsequent retest date this product conformed to the information contained in this publication. The current Specification sheet may be available at [Sigma-Aldrich.com](http://Sigma-Aldrich.com). For further inquiries, please contact Technical Service. Purchaser must determine the suitability of the product for its particular use. See reverse side of invoice or packing slip for additional terms and conditions of sale.