

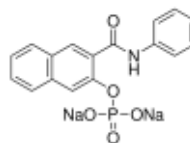
3050 Spruce Street, Saint Louis, MO 63103, USA

Website: [www.sigmaaldrich.com](http://www.sigmaaldrich.com)Email USA: [techserv@sial.com](mailto:techserv@sial.com)Outside USA: [eurtechserv@sial.com](mailto:eurtechserv@sial.com)

## Product Specification

Product Name:  
Naphthol AS phosphate disodium salt

**Product Number:** N9252  
**CAS Number:** 69815-54-9  
**MDL:** MFCD00069551  
**Formula:** C<sub>17</sub>H<sub>12</sub>NNa<sub>2</sub>O<sub>5</sub>P  
**Formula Weight:** 387.23 g/mol  
**Storage Temperature:** -20 °C



TEST	Specification
Appearance (Color)	White to Off-White
Appearance (Form)	Powder
Solubility (Color)	Faint Yellow
Solubility (Turbidity)	Clear
50 mg/ml, H <sub>2</sub> O	
Infrared spectrum	Conforms to Structure
Water (by Karl Fischer)	≤ 34.3 %
Purity (TLC)	≥ 98 %
Phosphorus (Dry Basis)	7.6 - 8.8 %
Sodium (dry basis)	10.6 - 13.2 %
Solvent Content (by GC)	≤ 3 %
Recommended Retest Period	-----
4 years	

Specification: PRD.1.ZQ5.10000101843

Sigma-Aldrich warrants, that at the time of the quality release or subsequent retest date this product conformed to the information contained in this publication. The current Specification sheet may be available at [Sigma-Aldrich.com](http://Sigma-Aldrich.com). For further inquiries, please contact Technical Service. Purchaser must determine the suitability of the product for its particular use. See reverse side of invoice or packing slip for additional terms and conditions of sale.

