

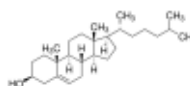
3050 Spruce Street, Saint Louis, MO 63103, USA

Website: www.sigmaldrich.comEmail USA: techserv@sial.comOutside USA: eurtechserv@sial.com

Product Specification

Product Name:
Cholesterol - Sigma Grade, ≥99%

Product Number: C8667
CAS Number: 57-88-5
MDL: MFCD00003646
Formula: C₂₇H₄₆O
Formula Weight: 386.65 g/mol
Storage Temperature: -20 °C



TEST

Specification

Appearance (Color)	White to Off White
Appearance (Form)	Powder
Solubility (Color)	Colorless to Very Faint Yellow
Solubility (Turbidity)	Clear
100 mg/mL, CHCl ₃ (APHA NMT 20)	
Proton NMR spectrum	Conforms to Structure
Water (by Karl Fischer)	≤ 1.0 %
Purity (GC)	≥ 99 %
Carbon	83.0 - 84.7 %
Recommended Retest Period	-----
6 Years	

Specification: PRD.2.ZQ5.10000005983

Sigma-Aldrich warrants, that at the time of the quality release or subsequent retest date this product conformed to the information contained in this publication. The current Specification sheet may be available at Sigma-Aldrich.com. For further inquiries, please contact Technical Service. Purchaser must determine the suitability of the product for its particular use. See reverse side of invoice or packing slip for additional terms and conditions of sale.