

3050 Spruce Street, Saint Louis, MO 63103, USA

Website: [www.sigmaaldrich.com](http://www.sigmaaldrich.com)

Email USA: [techserv@sial.com](mailto:techserv@sial.com)

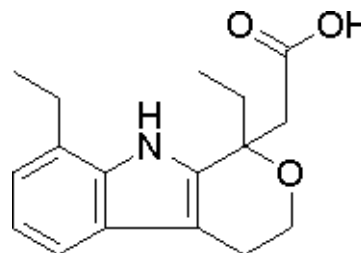
Outside USA: [eurtechserv@sial.com](mailto:eurtechserv@sial.com)

## Product Specification

Product Name:  
Etodolac

Product Number: **E0516**  
CAS Number: 41340-25-4

Formula: C<sub>17</sub>H<sub>21</sub>NO<sub>3</sub>  
Formula Weight: 287.4 AMU



### TEST

### Specification

Appearance (Form)	Powder
Appearance (Colour)	White to Light Yellow and Faint Beige to Light Beige
Solubility (Solvent)	Methanol
Solubility (Conc)	9.80 - 10.20 mg/ml
Solubility (Turbidity)	Clear
Solubility (Color)	Colorless to Yellow
Elemental Anal. (%C anhydrous)	70.58 - 71.58 %
Elemental Anal. (%N anhydrous)	4.17 - 5.57 %
Proton NMR spectrum	Conforms to Structure
Purity (TLC)	≥ 98.0 %
Storage Conditions	Dessicated and Protected from Light
Recommended Retest Period	-----
3 Years	

Specification: PRE.0.ZQ5.10000003350

Sigma-Aldrich warrants, that at the time of the quality release or subsequent retest date this product conformed to the information contained in this publication. The current Specification sheet may be available at Sigma-Aldrich.com. For further inquiries, please contact Technical Service. Purchaser must determine the suitability of the product for its particular use. See reverse side of invoice or packing slip for additional terms and conditions of sale.