

3050 Spruce Street, Saint Louis, MO 63103, USA

Website: www.sigmaaldrich.comEmail USA: techserv@sial.comOutside USA: eurtechserv@sial.com**Product Specification**

Product Name:

Ethyltriphenylphosphonium iodide 95%

Product Number:**389471**

CAS Number:

4736-60-1

MDL:

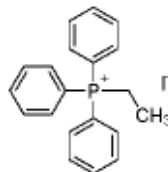
MFCD00040352

Formula:

C₂₀H₂₀IP

Formula Weight:

418.25 g/mol

**TEST****Specification**

Appearance (Color)

White to Off-White to Light Yellow

Conforms to Requirements

Appearance (Form)

Powder

Infrared spectrum

Conforms to Structure

Assay

94.00- 100.00 %

Remarks:

Specification Date : 06/21/2010

Sigma-Aldrich warrants, that at the time of the quality release or subsequent retest date this product conformed to the information contained in this publication. The current Specification sheet may be available at Sigma-Aldrich.com. For further inquiries, please contact Technical Service. Purchaser must determine the suitability of the product for its particular use. See reverse side of invoice or packing slip for additional terms and conditions of sale.