

3050 Spruce Street, Saint Louis, MO 63103, USA

Website: www.sigmaaldrich.comEmail USA: techserv@sial.comOutside USA: eurtechserv@sial.com

Product Specification

Product Name:

D-Glucose 6-phosphate potassium salt - ≥95%

Product Number:

G6526

CAS Number:

103192-55-8

MDL:

MFCD00136042

Formula:

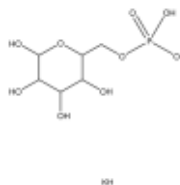
C₆H₁₂KO₉P

Formula Weight:

298.23 g/mol

Storage Temperature:

-20 °C



TEST

Specification

Appearance (Color)	White
Appearance (Form)	Powder
Solubility (Color)	Colorless
Solubility (Turbidity)	Clear to Slightly Hazy
50 mg/mL, H ₂ O	
Water (by Karl Fischer)	≤ 6 %
Potassium (K) anhydrous	10.16 - 15.88 %
Inorganic Phosphorus	≤ 0.5 %
Purity (Enzymatic) anhydrous	≥ 95 %

Specification: PRD.2.ZQ5.10000027331

Sigma-Aldrich warrants, that at the time of the quality release or subsequent retest date this product conformed to the information contained in this publication. The current Specification sheet may be available at Sigma-Aldrich.com. For further inquiries, please contact Technical Service. Purchaser must determine the suitability of the product for its particular use. See reverse side of invoice or packing slip for additional terms and conditions of sale.

