

3050 Spruce Street, Saint Louis, MO 63103, USA

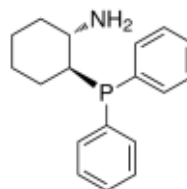
Website: www.sigmaaldrich.comEmail USA: techserv@sial.comOutside USA: eurtechserv@sial.com

Product Specification

Product Name:
(1S,2S)-2-(Diphenylphosphino)cyclohexylamine - 95%

Product Number: 716693
CAS Number: 452304-63-1

Formula: C₁₈H₂₂NP
Formula Weight: 283.35 g/mol



TEST

Specification

Appearance (Color)	White to Tan
Appearance (Form)	Conforms to Requirements
Solid, Powder or Crystals	
Proton NMR spectrum	Conforms to Structure
Phosphorus NMR Spectra	Conforms to Structure
Carbon	72.1 - 80.5 %
Nitrogen	4.6 - 5.2 %
Purity (GC)	≥ 94.5 %
Optical Rotation	93.0 - 113.0
Degrees, c = 0.5%; Dichloromethane	
Supplier information	Note
Product of Kanata Chemical Technologies	

Specification: PRD.0.ZQ5.10000054662

Sigma-Aldrich warrants, that at the time of the quality release or subsequent retest date this product conformed to the information contained in this publication. The current Specification sheet may be available at Sigma-Aldrich.com. For further inquiries, please contact Technical Service. Purchaser must determine the suitability of the product for its particular use. See reverse side of invoice or packing slip for additional terms and conditions of sale.