

3050 Spruce Street, Saint Louis, MO 63103, USA

Website: www.sigmaaldrich.com

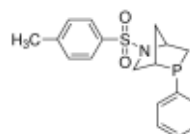
Email USA: techserv@sial.com

Outside USA: eurtechserv@sial.com

Product Specification

Product Name:
Endo-Phenyl Kwon [2.2.1] Bicyclic Phosphine - 95% (HPLC)

Product Number: **798363**



Formula: C₁₈H₂₀NO₂PS
Formula Weight: 345.40 g/mol
Storage Temperature: 2 - 8 °C

TEST	Specification
------	---------------

Appearance (Color)	White to Faint Yellow and Faint Beige and Faint Brown
Appearance (Form)	Powder or Crystals
Proton NMR Spectrum	Conforms to Structure
Phosphorus NMR Spectrum	Conforms to Structure
Carbon	56.0 - 69.2 %
Nitrogen	
Specification: Report Only	
Sulfur	
Specification: Report Only	
Purity (HPLC)	≥ 94.5 %

Specification: PRD.1.ZQ5.10000062590

Sigma-Aldrich warrants, that at the time of the quality release or subsequent retest date this product conformed to the information contained in this publication. The current Specification sheet may be available at Sigma-Aldrich.com. For further inquiries, please contact Technical Service. Purchaser must determine the suitability of the product for its particular use. See reverse side of invoice or packing slip for additional terms and conditions of sale.