

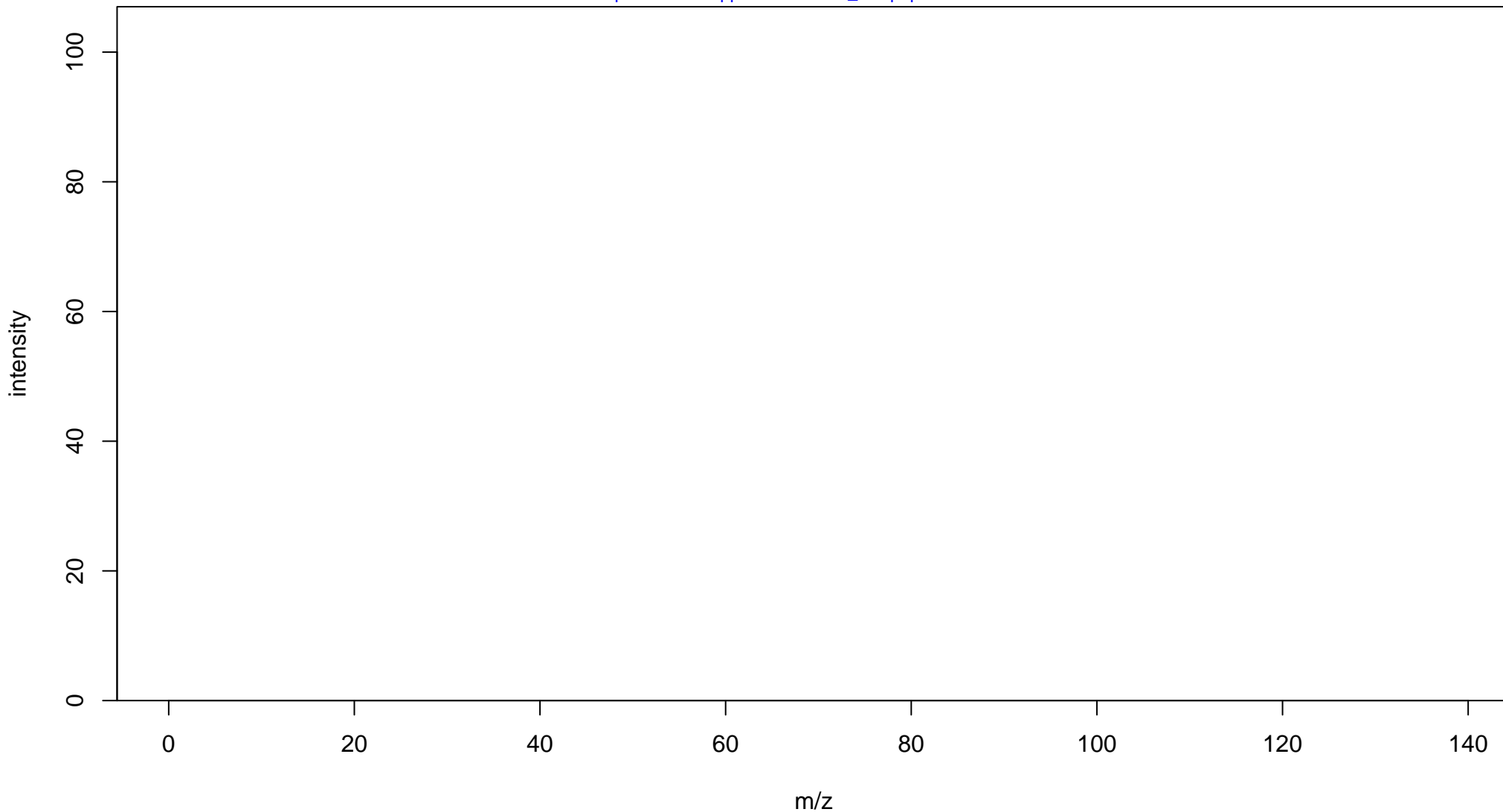
D-(+)-Malic acid

Mass: 134.0215 Formula: C₄H₆O₅

mode: + collisionE: 0V

METLIN ID: 63096 SIGMA Prod: 02300

http://metlin.scripps.edu/metabo_info.php?molid=63096



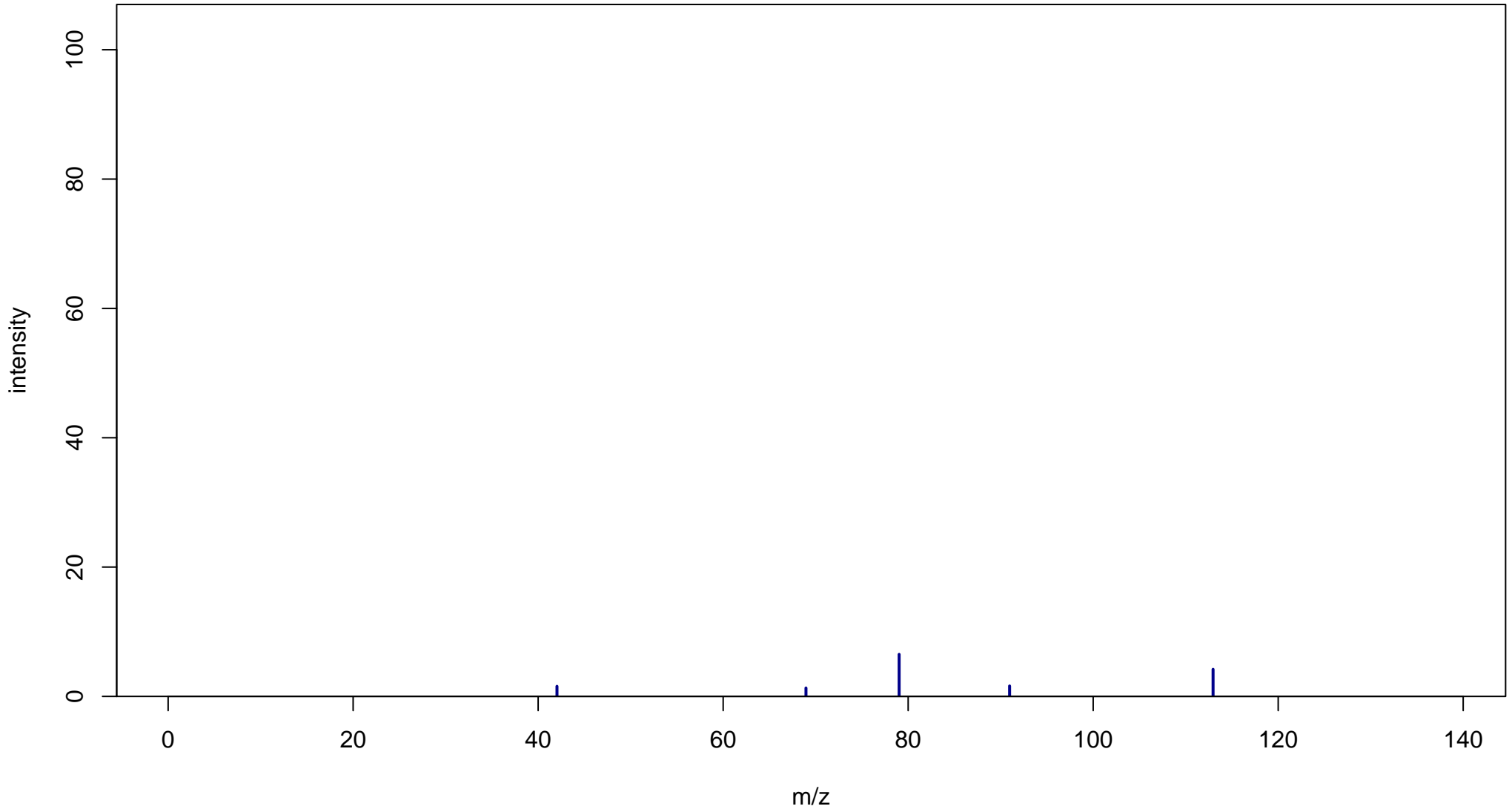
D-(+)-Malic acid

Mass: 134.0215 Formula: C₄H₆O₅

mode: + collisionE: 10V

METLIN ID: 63096 SIGMA Prod: 02300

http://metlin.scripps.edu/metabo_info.php?molid=63096



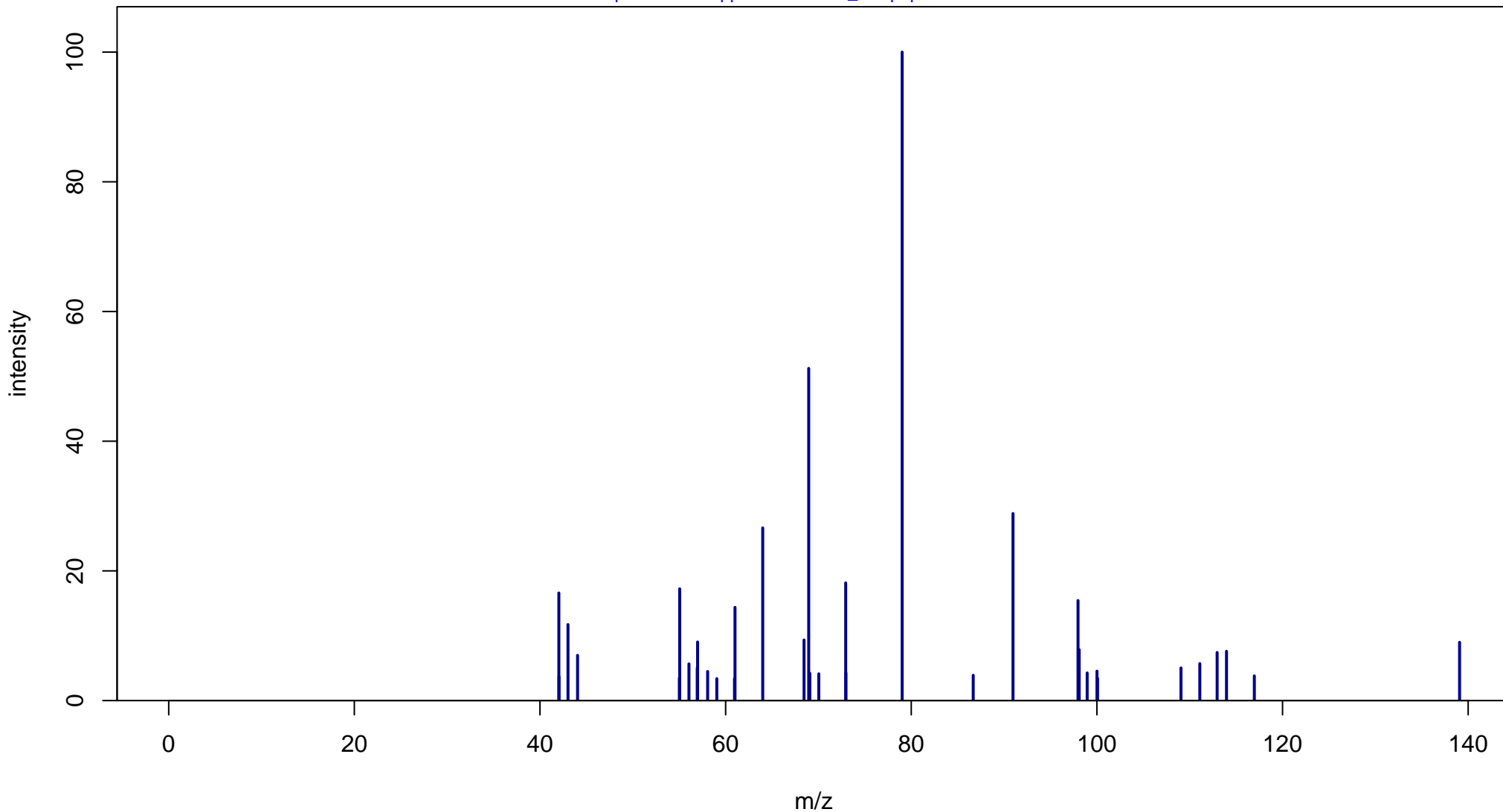
D-(+)-Malic acid

Mass: 134.0215 Formula: C₄H₆O₅

mode: + collisionE: 20V

METLIN ID: 63096 SIGMA Prod: 02300

http://metlin.scripps.edu/metabo_info.php?molid=63096



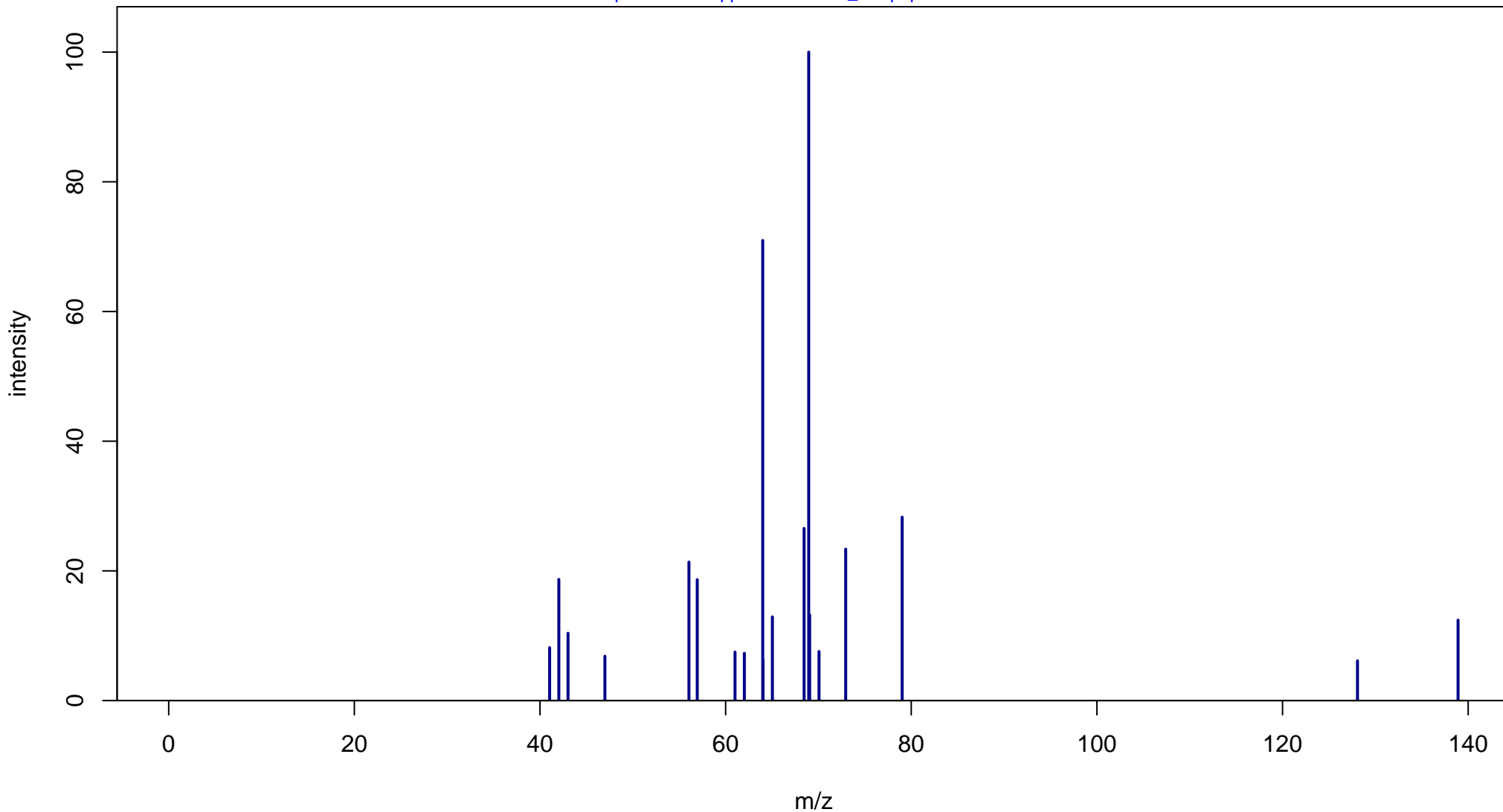
D-(+)-Malic acid

Mass: 134.0215 Formula: C₄H₆O₅

mode: + collisionE: 40V

METLIN ID: 63096 SIGMA Prod: 02300

http://metlin.scripps.edu/metabo_info.php?molid=63096



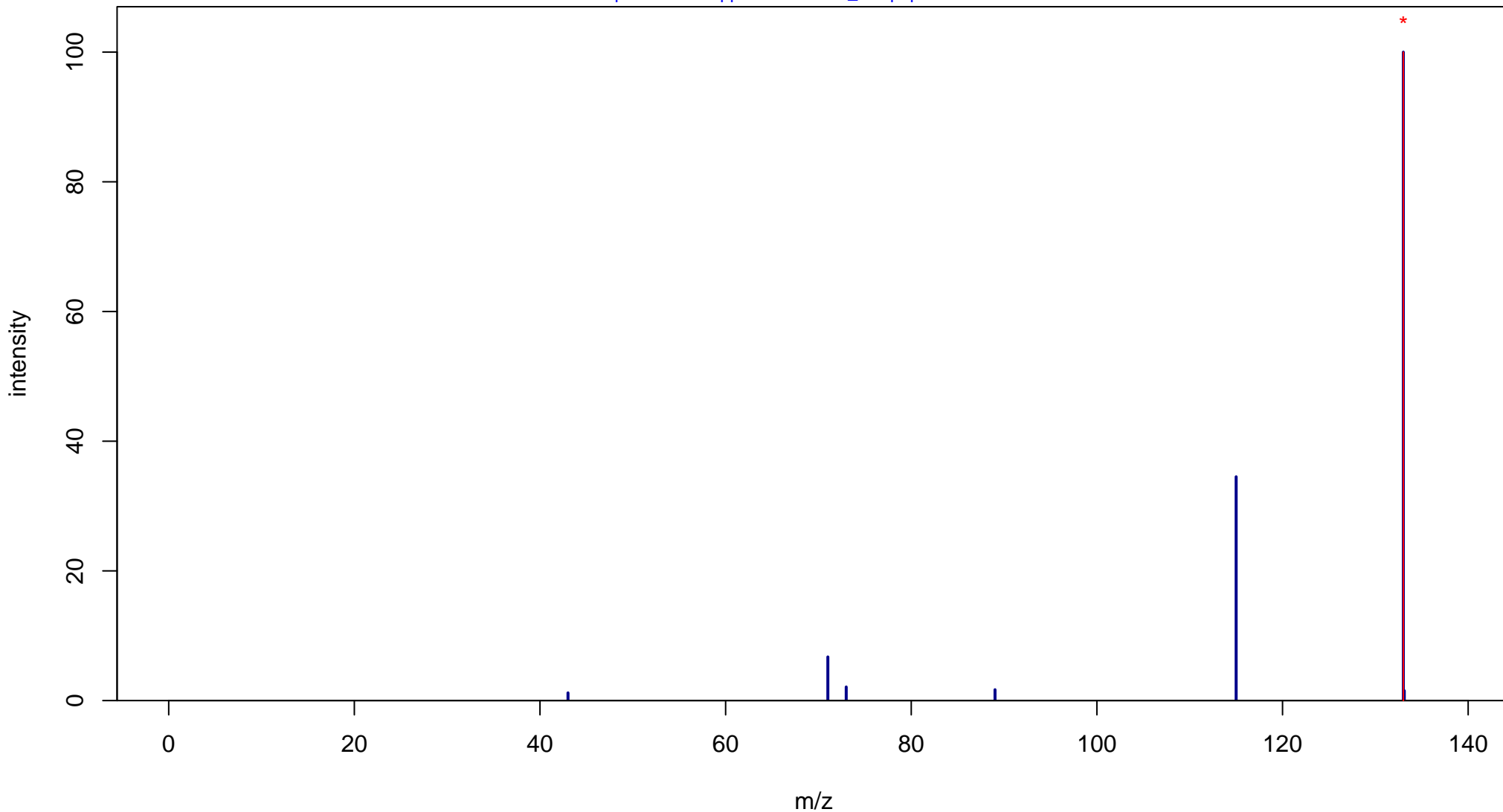
D-(+)-Malic acid

Mass: 134.0215 Formula: C₄H₆O₅

mode: - collisionE: 0V

METLIN ID: 63096 SIGMA Prod: 02300

http://metlin.scripps.edu/metabo_info.php?molid=63096



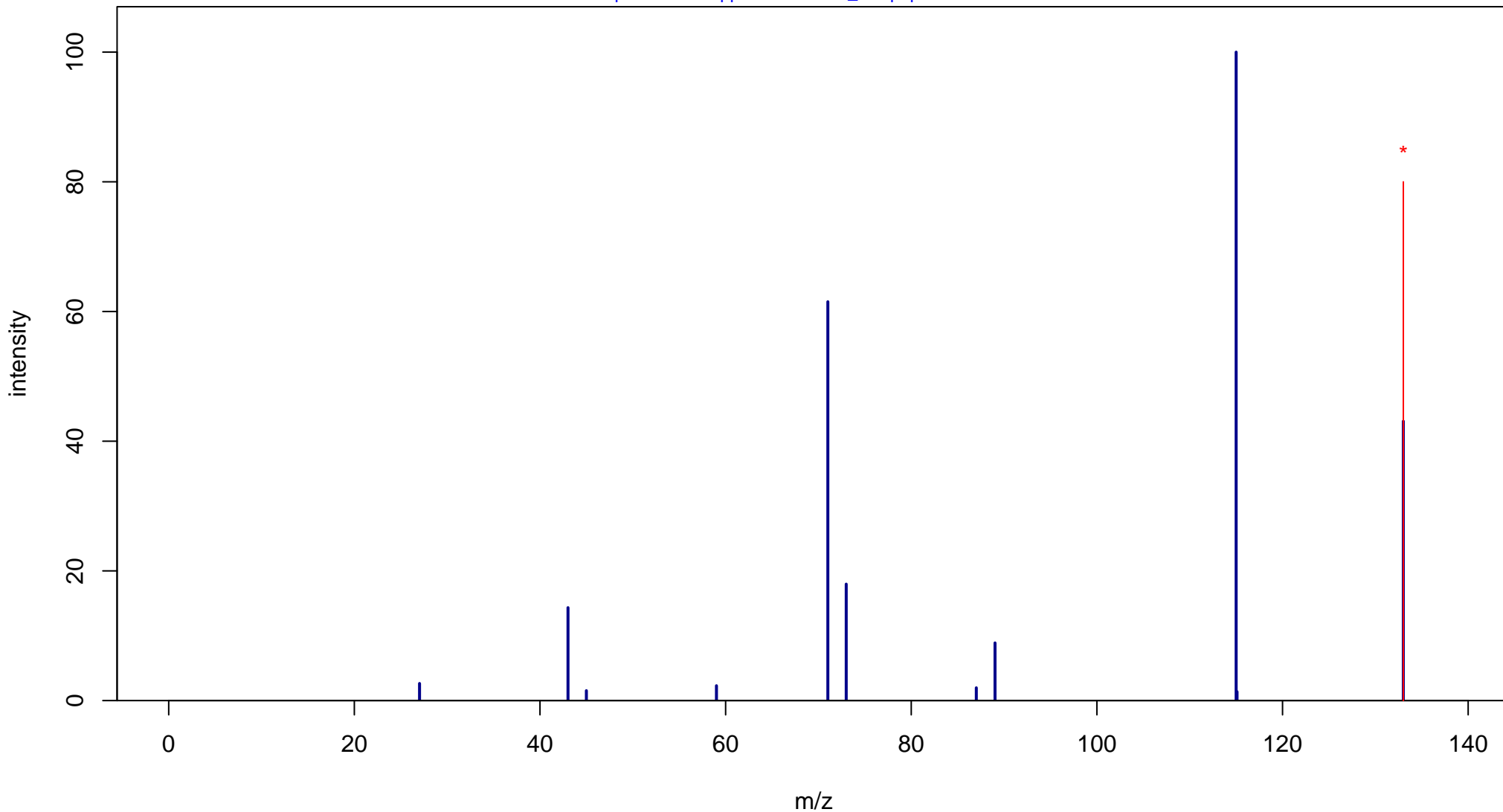
D-(+)-Malic acid

Mass: 134.0215 Formula: C₄H₆O₅

mode: - collisionE: 10V

METLIN ID: 63096 SIGMA Prod: 02300

http://metlin.scripps.edu/metabo_info.php?molid=63096



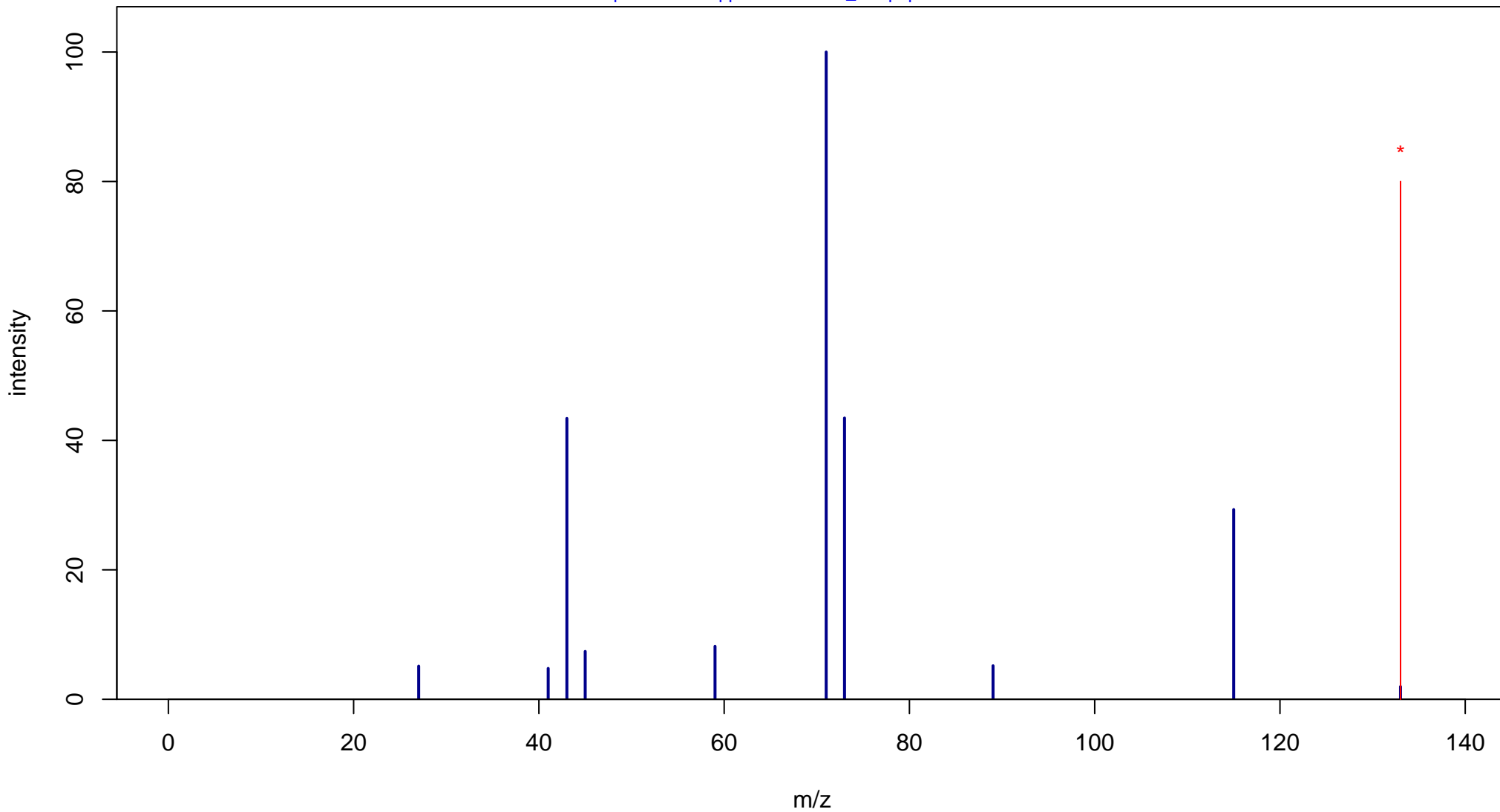
D-(+)-Malic acid

Mass: 134.0215 Formula: C₄H₆O₅

mode: - collisionE: 20V

METLIN ID: 63096 SIGMA Prod: 02300

http://metlin.scripps.edu/metabo_info.php?molid=63096



D-(+)-Malic acid

Mass: 134.0215 Formula: C₄H₆O₅

mode: - collisionE: 40V

METLIN ID: 63096 SIGMA Prod: 02300

http://metlin.scripps.edu/metabo_info.php?molid=63096

