

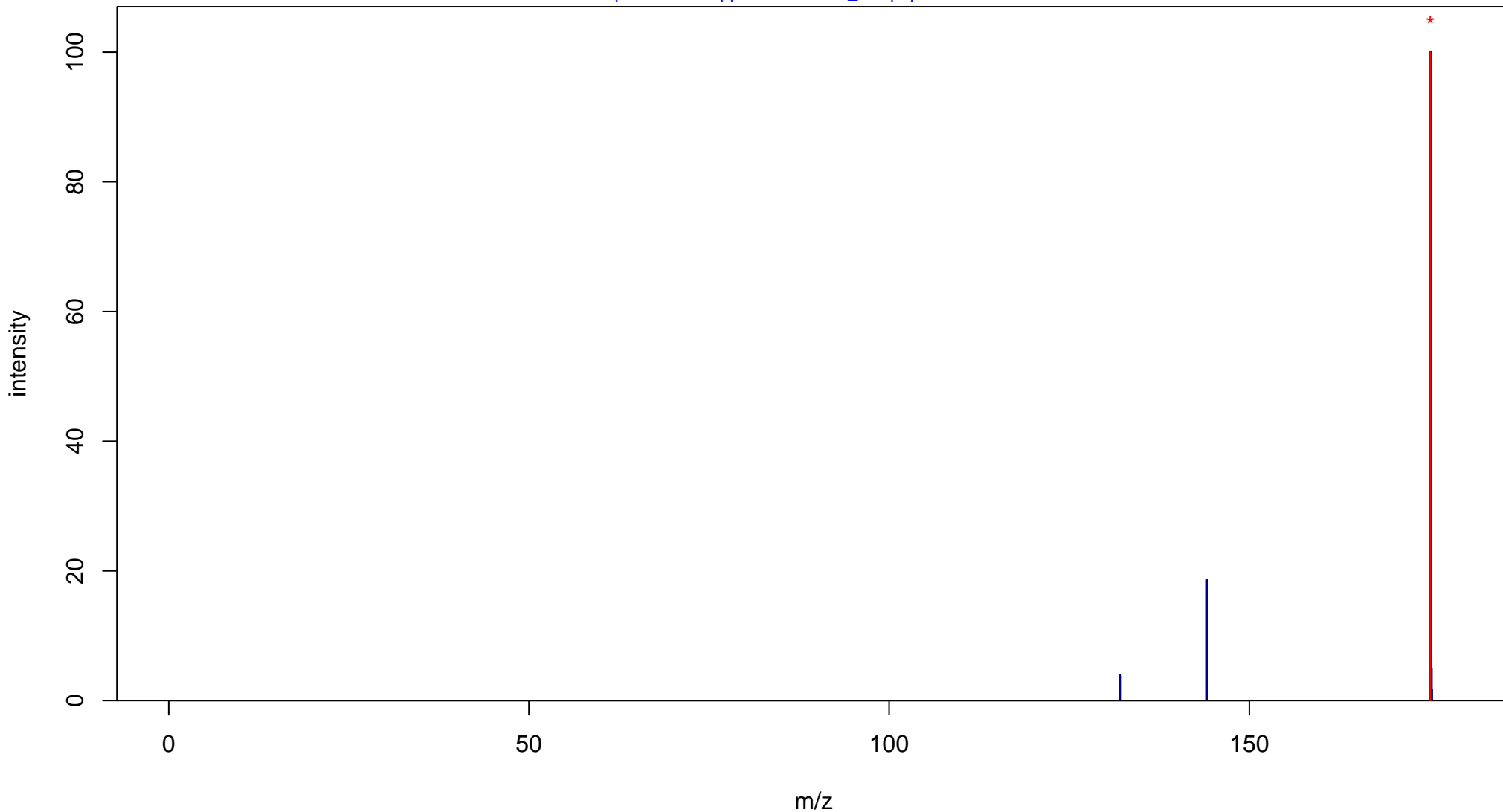
# N-Methyltryptamine

Mass: 174.1157 Formula: C<sub>11</sub>H<sub>14</sub>N<sub>2</sub>

mode: + collisionE: 0V

METLIN ID: 63558 SIGMA Prod: 115312

[http://metlin.scripps.edu/metabo\\_info.php?molid=63558](http://metlin.scripps.edu/metabo_info.php?molid=63558)



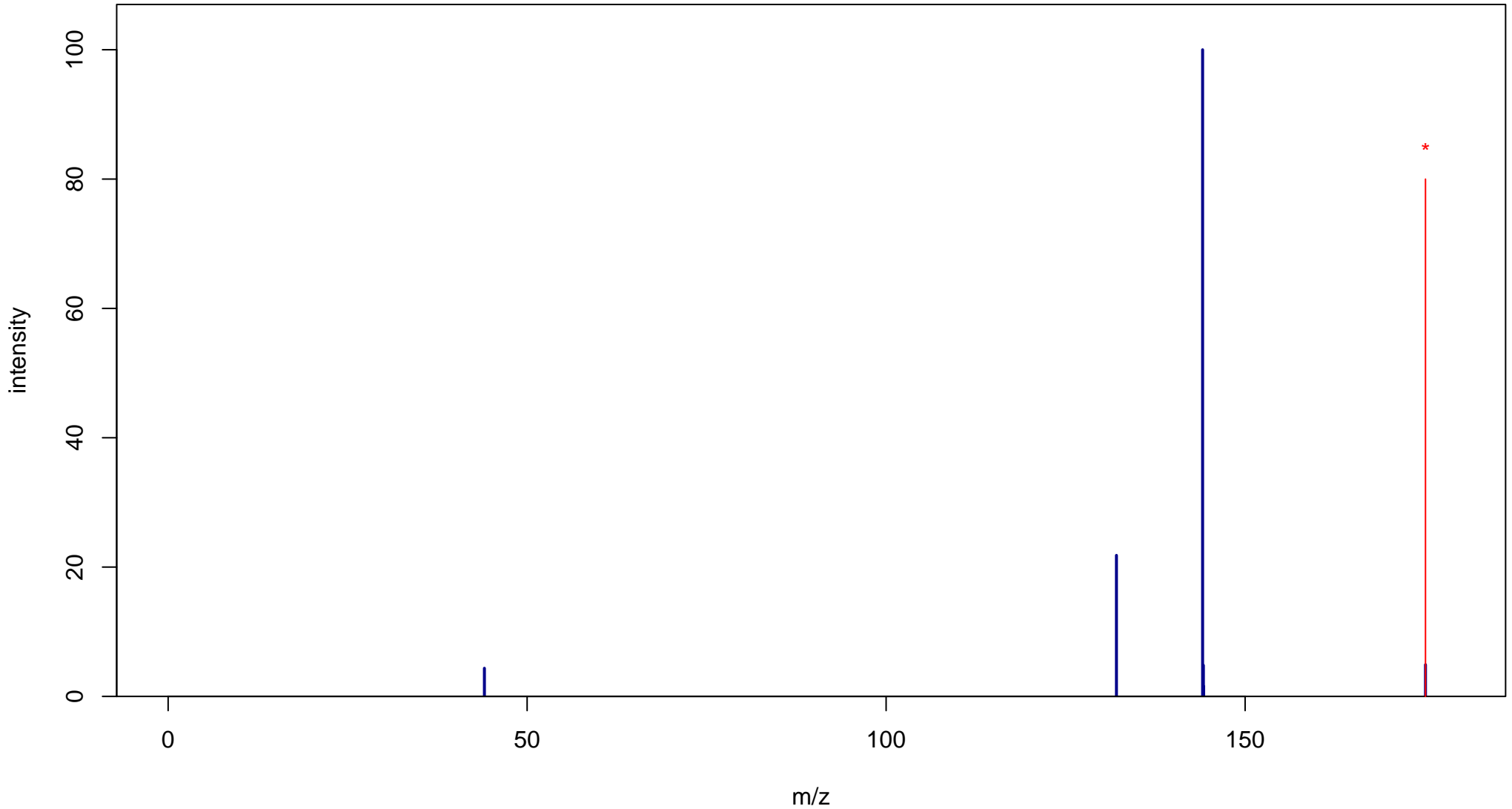
# N-Methyltryptamine

Mass: 174.1157 Formula: C<sub>11</sub>H<sub>14</sub>N<sub>2</sub>

mode: + collisionE: 10V

METLIN ID: 63558 SIGMA Prod: 115312

[http://metlin.scripps.edu/metabo\\_info.php?molid=63558](http://metlin.scripps.edu/metabo_info.php?molid=63558)



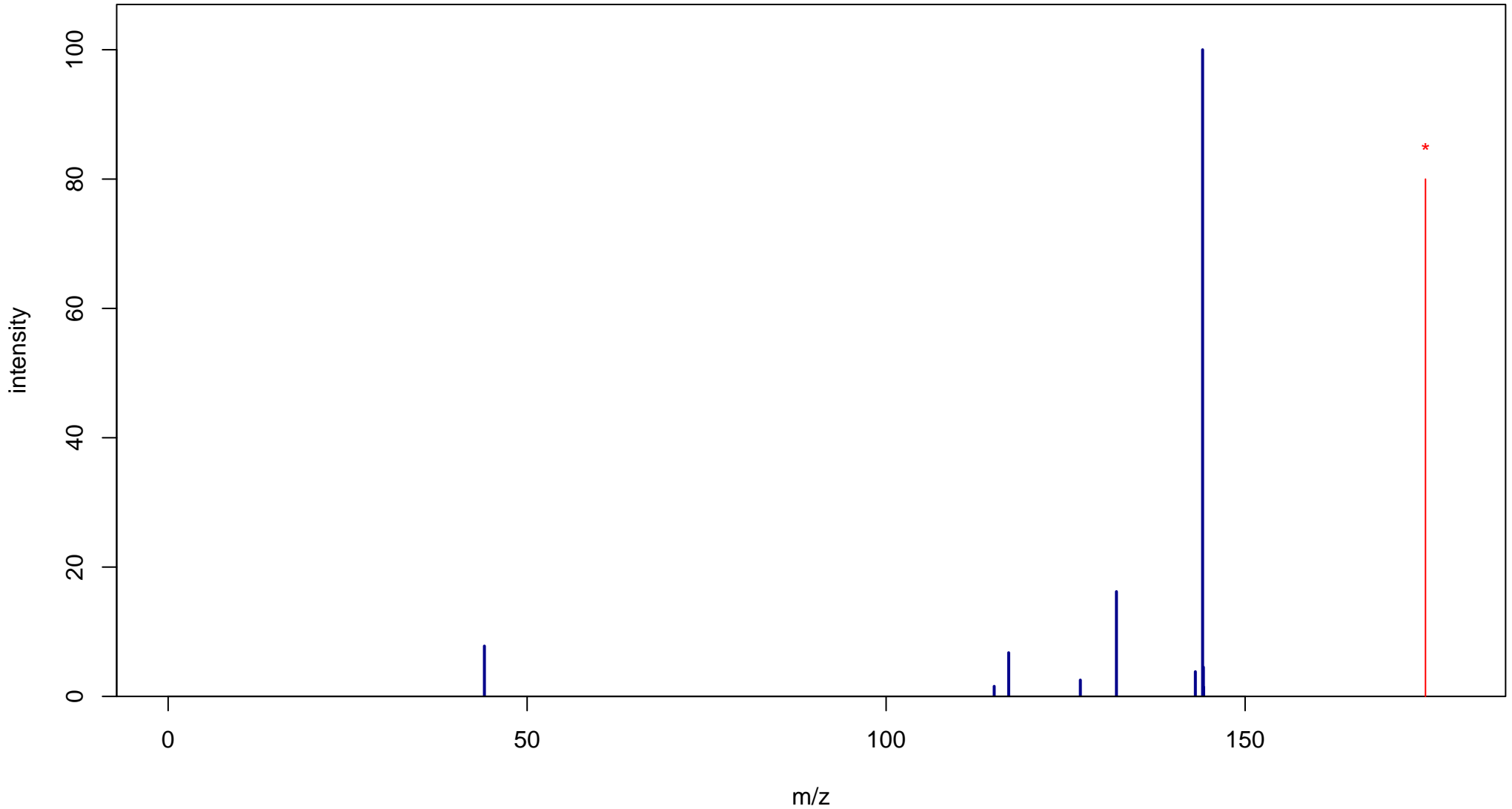
# N-Methyltryptamine

Mass: 174.1157 Formula: C<sub>11</sub>H<sub>14</sub>N<sub>2</sub>

mode: + collisionE: 20V

METLIN ID: 63558 SIGMA Prod: 115312

[http://metlin.scripps.edu/metabo\\_info.php?molid=63558](http://metlin.scripps.edu/metabo_info.php?molid=63558)



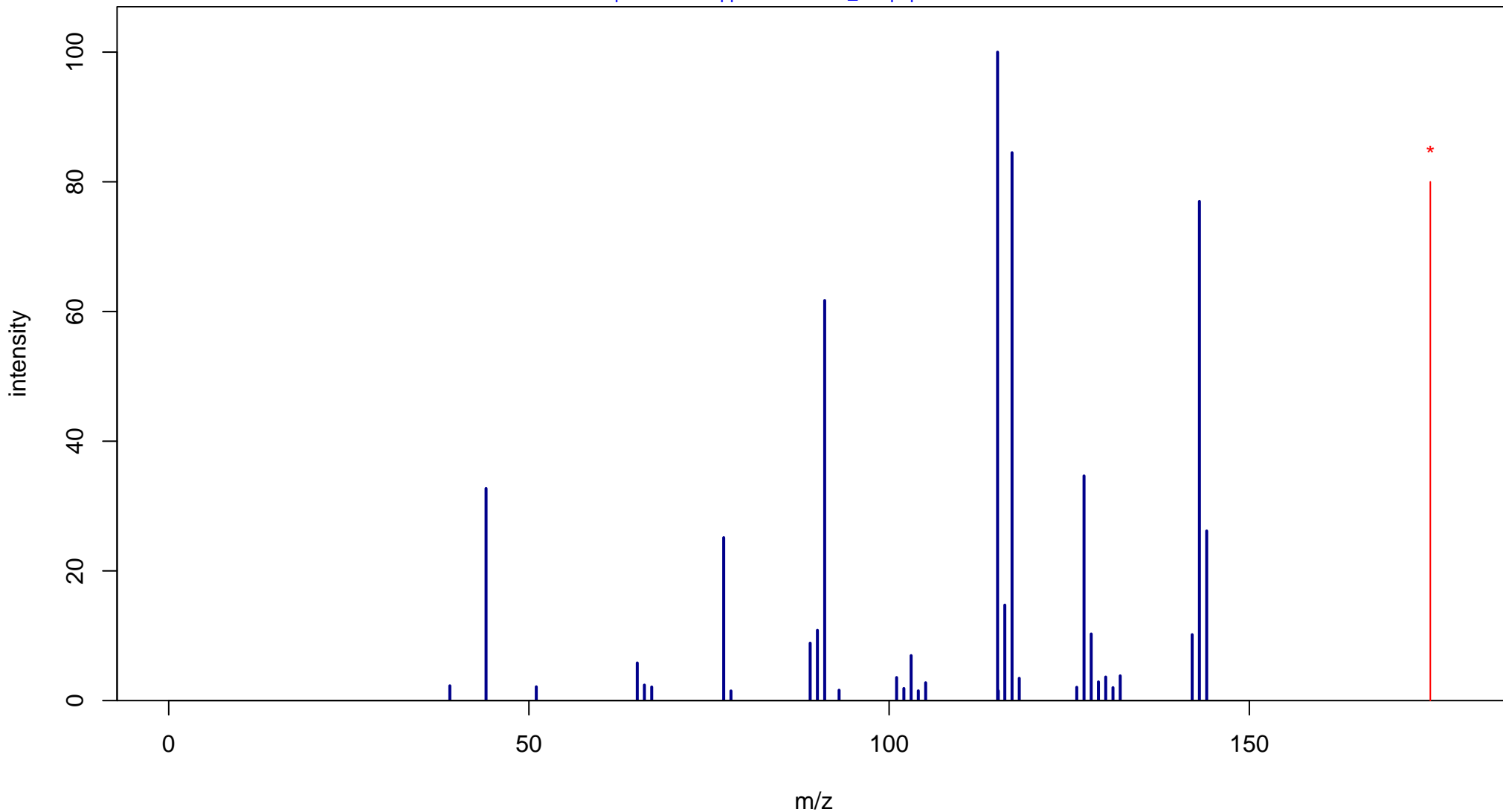
# N-Methyltryptamine

Mass: 174.1157 Formula: C<sub>11</sub>H<sub>14</sub>N<sub>2</sub>

mode: + collisionE: 40V

METLIN ID: 63558 SIGMA Prod: 115312

[http://metlin.scripps.edu/metabo\\_info.php?molid=63558](http://metlin.scripps.edu/metabo_info.php?molid=63558)



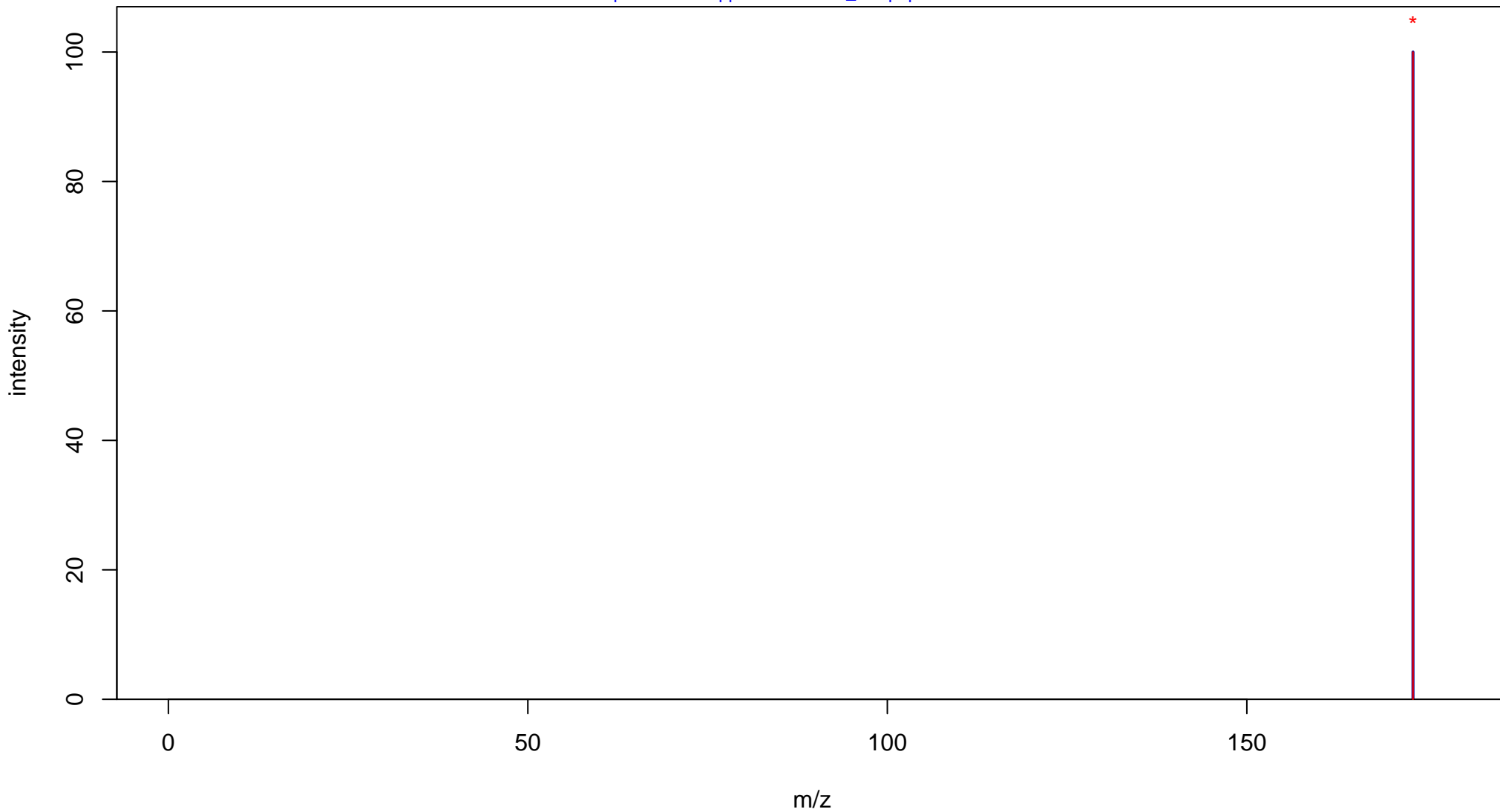
# N-Methyltryptamine

Mass: 174.1157 Formula: C<sub>11</sub>H<sub>14</sub>N<sub>2</sub>

mode: - collisionE: 0V

METLIN ID: 63558 SIGMA Prod: 115312

[http://metlin.scripps.edu/metabo\\_info.php?molid=63558](http://metlin.scripps.edu/metabo_info.php?molid=63558)



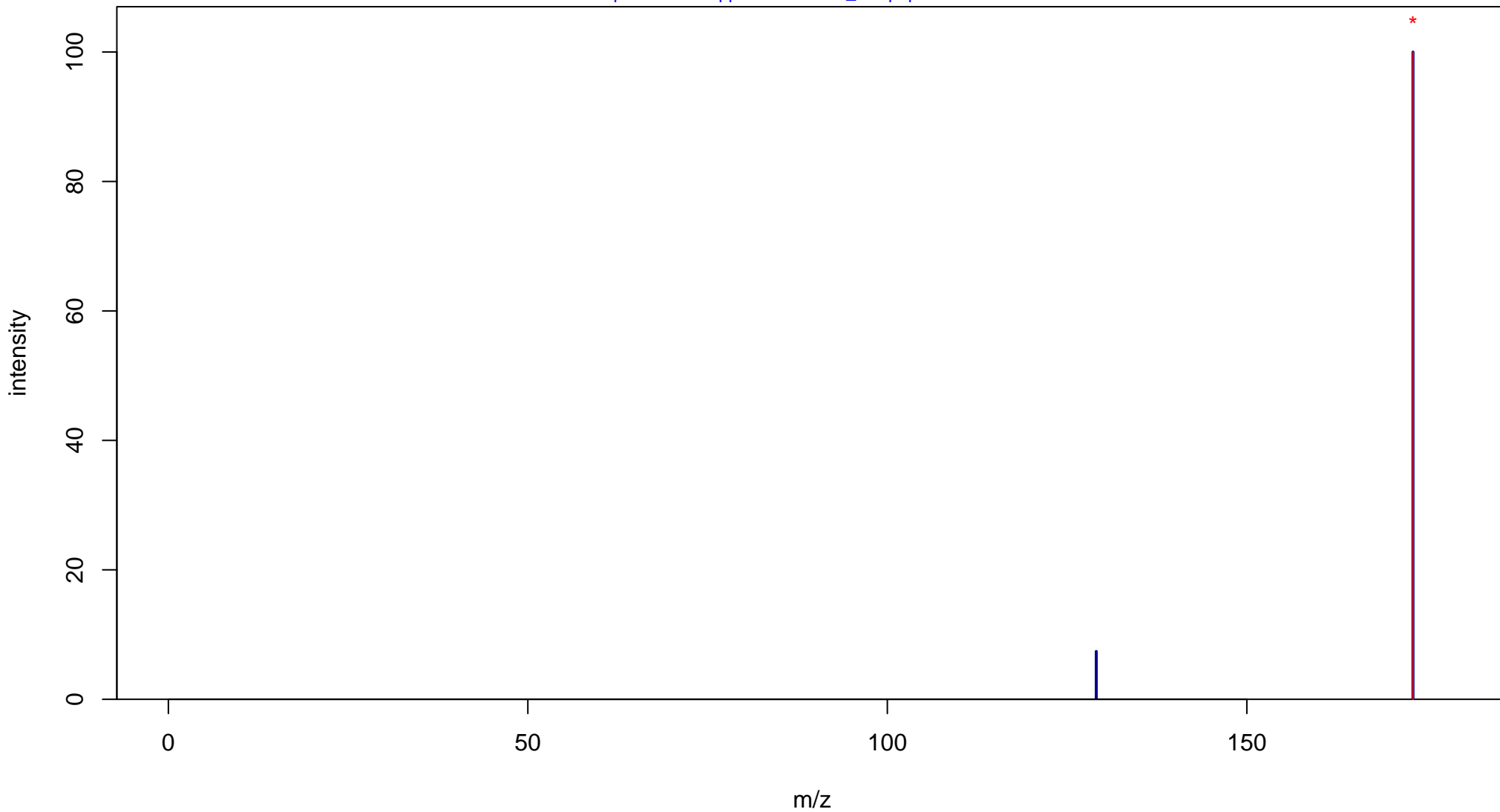
# N-Methyltryptamine

Mass: 174.1157 Formula: C<sub>11</sub>H<sub>14</sub>N<sub>2</sub>

mode: - collisionE: 10V

METLIN ID: 63558 SIGMA Prod: 115312

[http://metlin.scripps.edu/metabo\\_info.php?molid=63558](http://metlin.scripps.edu/metabo_info.php?molid=63558)



# N-Methyltryptamine

Mass: 174.1157 Formula: C<sub>11</sub>H<sub>14</sub>N<sub>2</sub>

mode: - collisionE: 20V

METLIN ID: 63558 SIGMA Prod: 115312

[http://metlin.scripps.edu/metabo\\_info.php?molid=63558](http://metlin.scripps.edu/metabo_info.php?molid=63558)

