

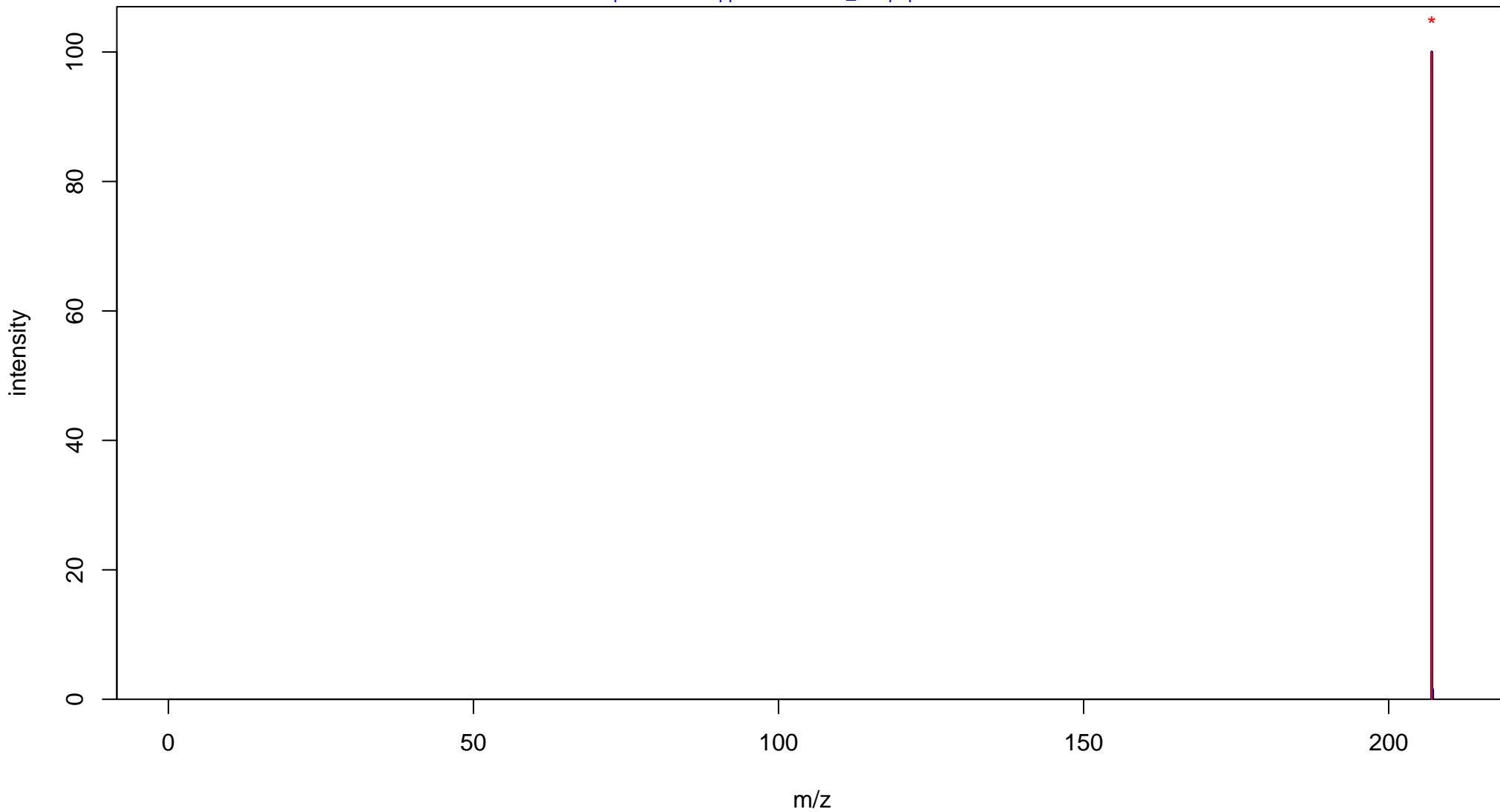
5,7-Dimethoxycoumarin

Mass: 206.0579 Formula: C₁₁H₁₀O₄

mode: + collisionE: 0V

METLIN ID: 44086 SIGMA Prod: 116238

http://metlin.scripps.edu/metabo_info.php?molid=44086



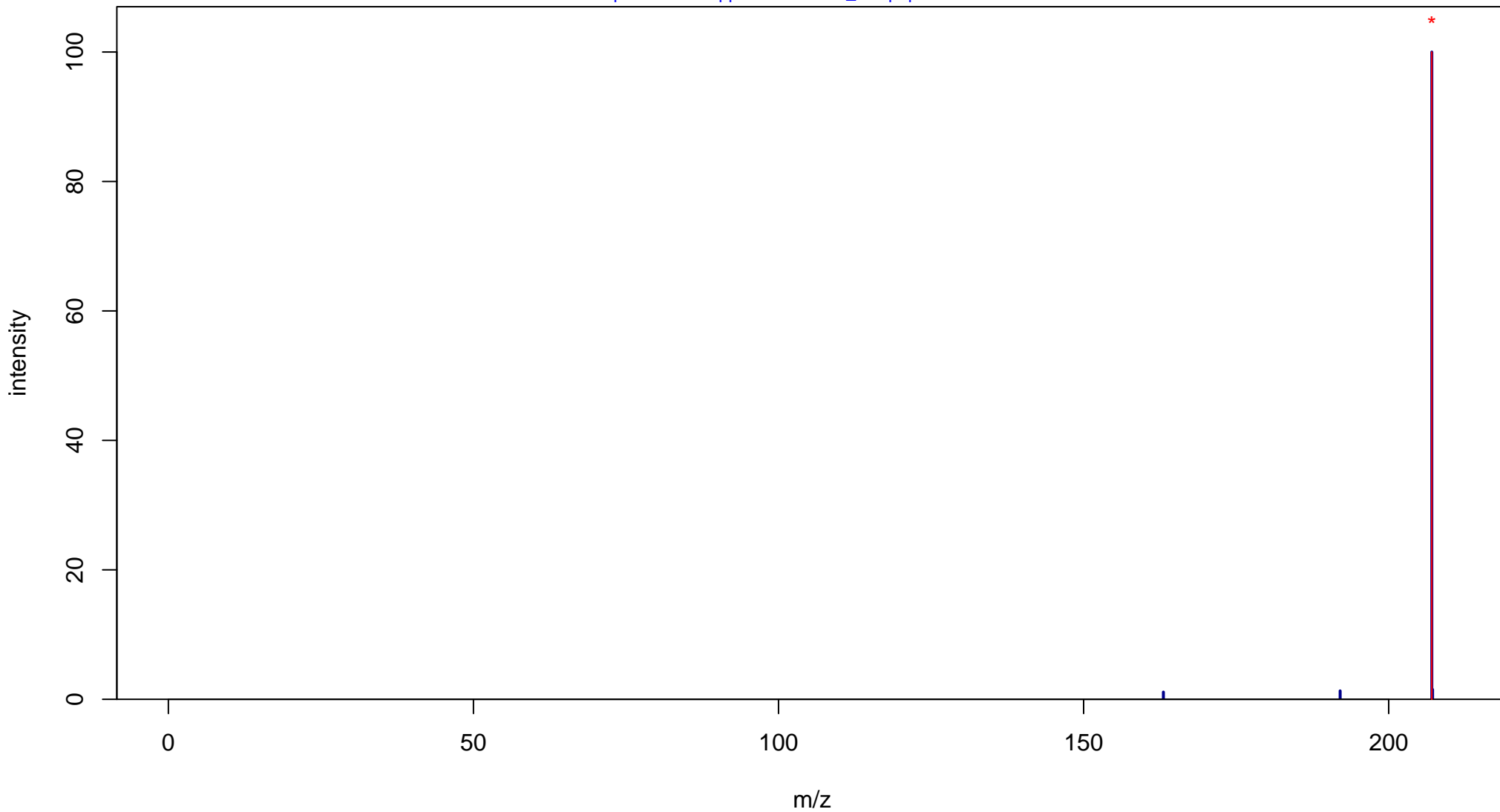
5,7-Dimethoxycoumarin

Mass: 206.0579 Formula: C₁₁H₁₀O₄

mode: + collisionE: 10V

METLIN ID: 44086 SIGMA Prod: 116238

http://metlin.scripps.edu/metabo_info.php?molid=44086



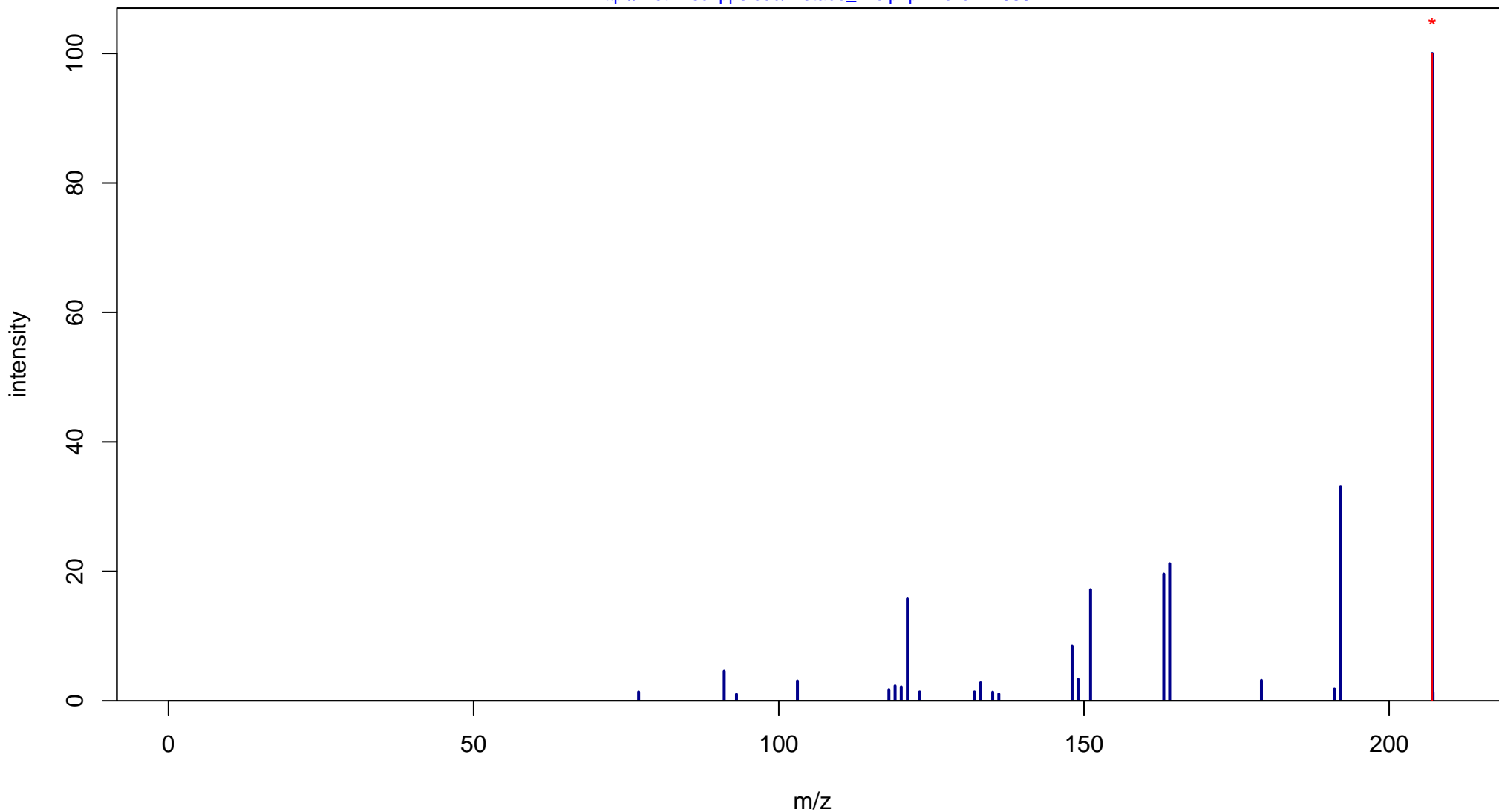
5,7-Dimethoxycoumarin

Mass: 206.0579 Formula: C₁₁H₁₀O₄

mode: + collisionE: 20V

METLIN ID: 44086 SIGMA Prod: 116238

http://metlin.scripps.edu/metabo_info.php?molid=44086



5,7-Dimethoxycoumarin

Mass: 206.0579 Formula: C₁₁H₁₀O₄

mode: + collisionE: 40V

METLIN ID: 44086 SIGMA Prod: 116238

http://metlin.scripps.edu/metabo_info.php?molid=44086

