

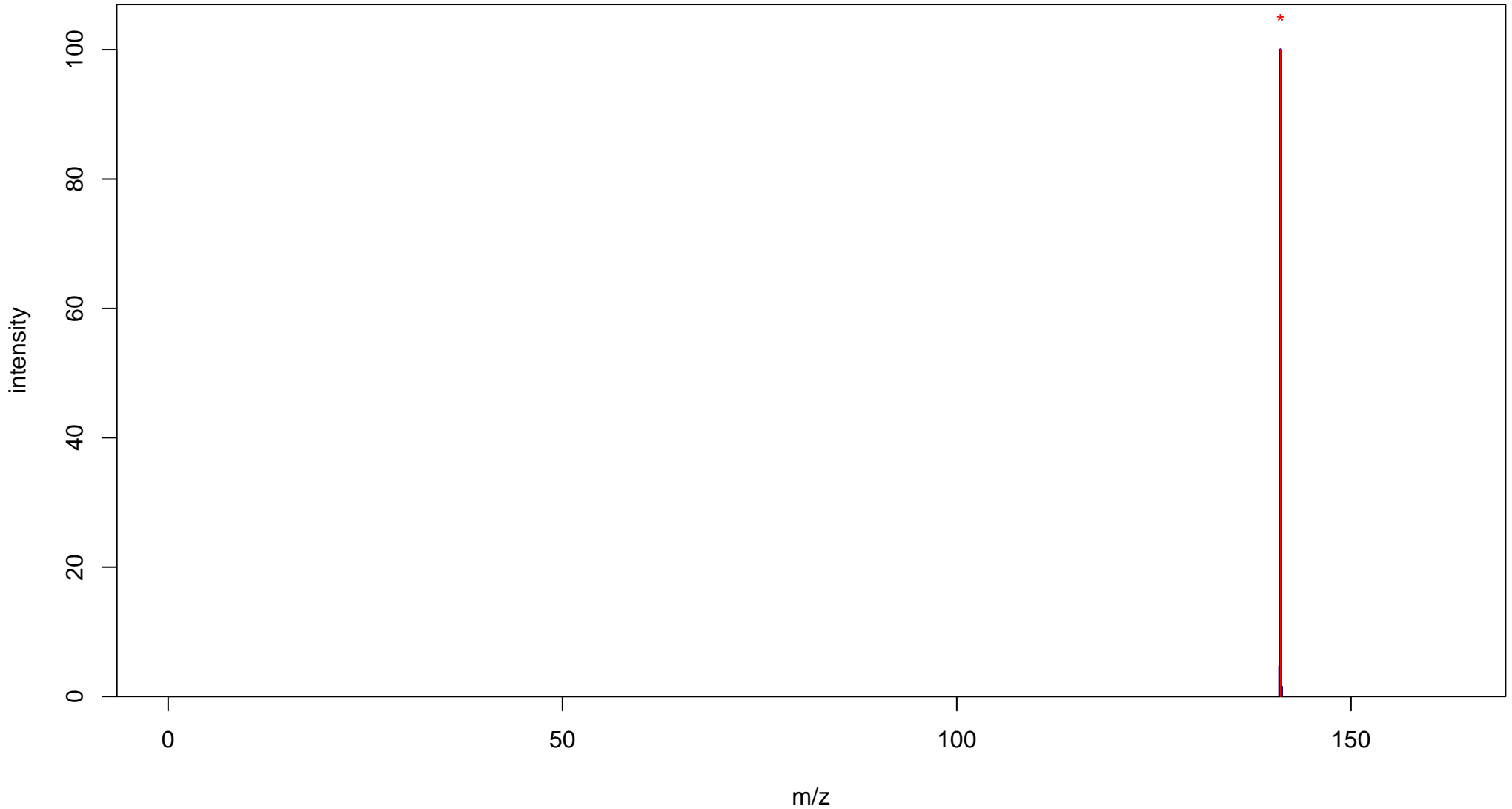
# 1-Naphthalenemethanol

Mass: 158.0732 Formula: C<sub>11</sub>H<sub>10</sub>O

mode: + collisionE: 0V

METLIN ID: 2758 SIGMA Prod: 184284

[http://metlin.scripps.edu/metabo\\_info.php?molid=2758](http://metlin.scripps.edu/metabo_info.php?molid=2758)



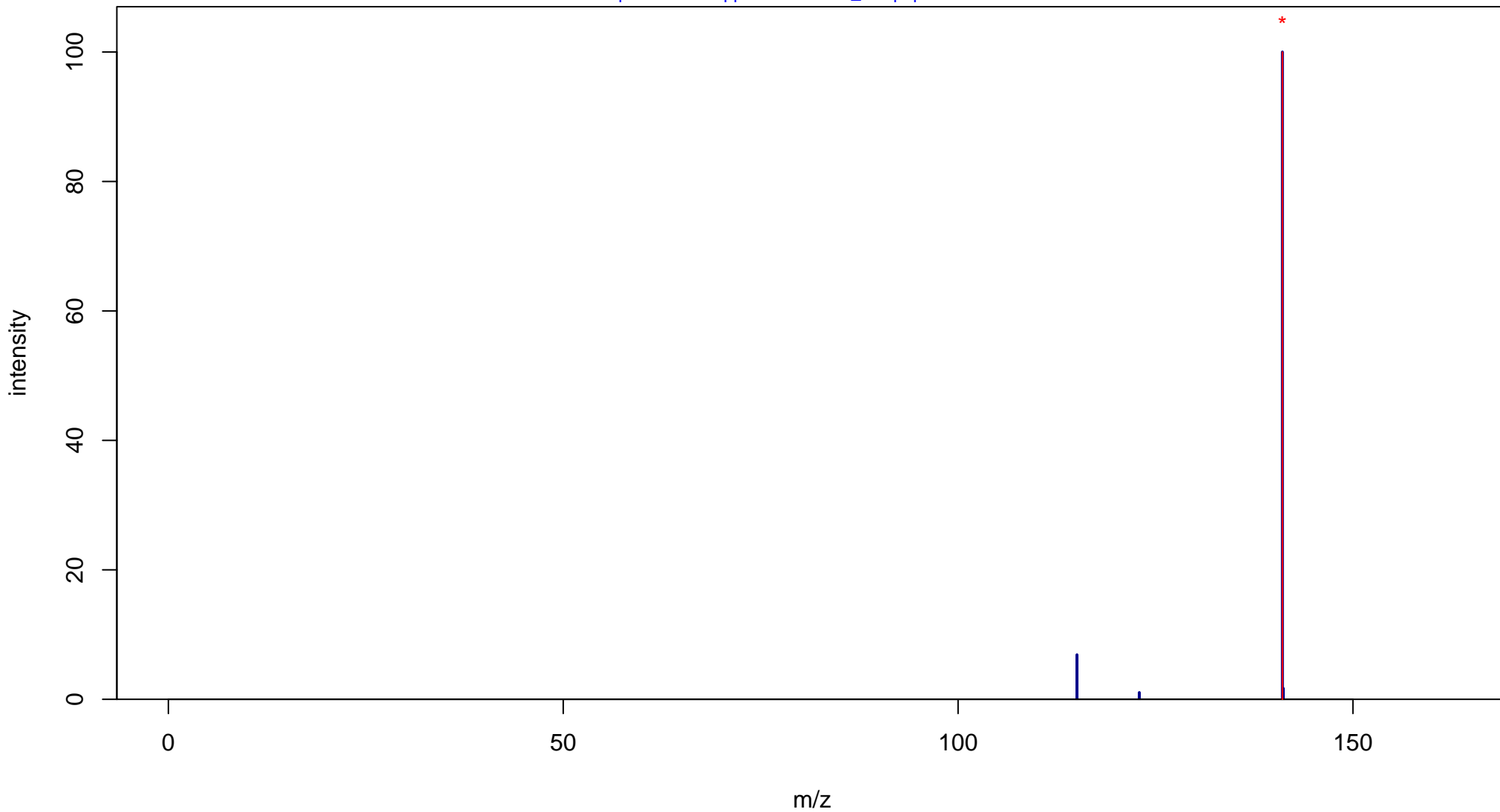
# 1-Naphthalenemethanol

Mass: 158.0732 Formula: C<sub>11</sub>H<sub>10</sub>O

mode: + collisionE: 10V

METLIN ID: 2758 SIGMA Prod: 184284

[http://metlin.scripps.edu/metabo\\_info.php?molid=2758](http://metlin.scripps.edu/metabo_info.php?molid=2758)



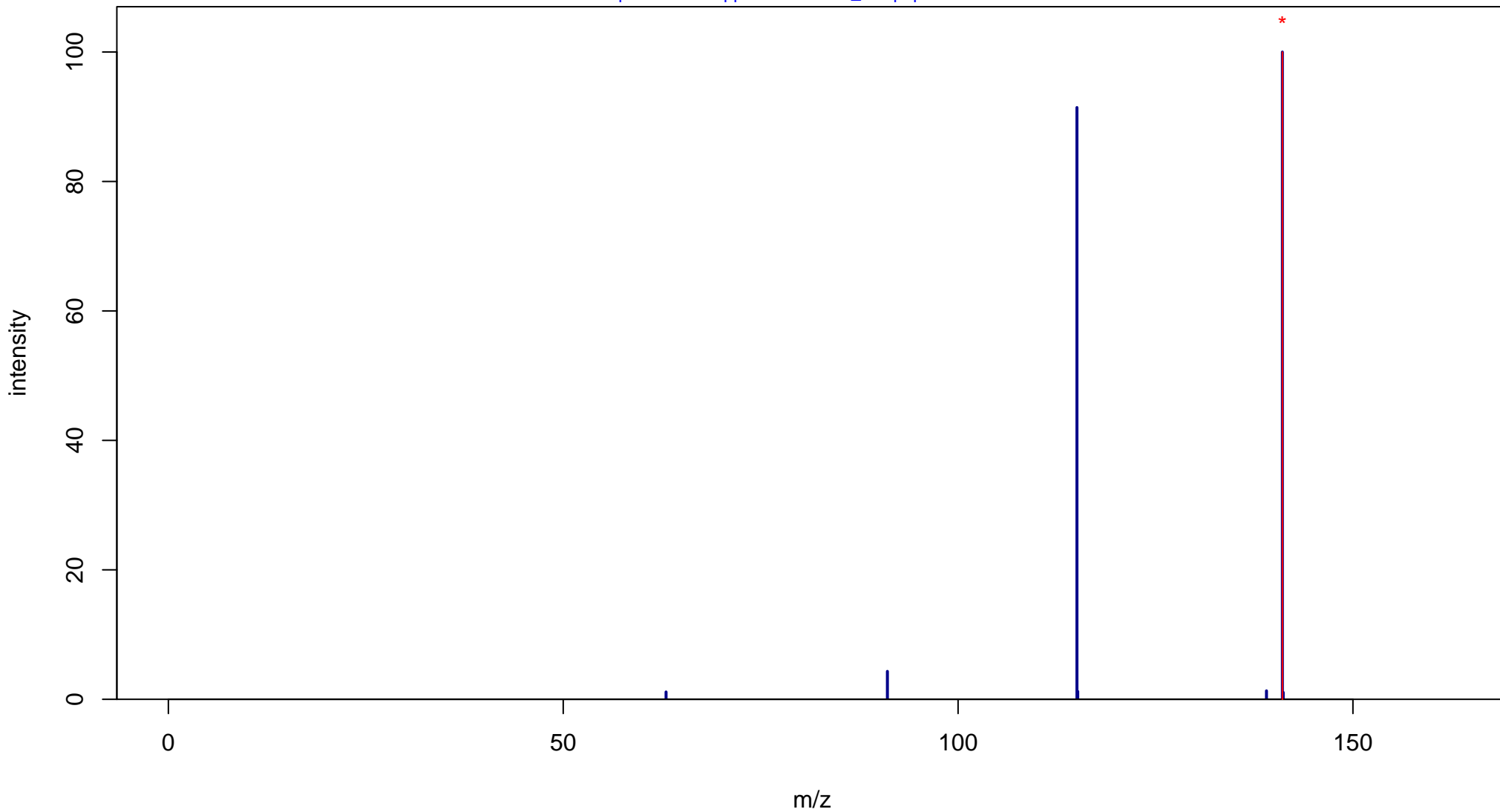
# 1-Naphthalenemethanol

Mass: 158.0732 Formula: C<sub>11</sub>H<sub>10</sub>O

mode: + collisionE: 20V

METLIN ID: 2758 SIGMA Prod: 184284

[http://metlin.scripps.edu/metabo\\_info.php?molid=2758](http://metlin.scripps.edu/metabo_info.php?molid=2758)



# 1-Naphthalenemethanol

Mass: 158.0732 Formula: C<sub>11</sub>H<sub>10</sub>O

mode: + collisionE: 40V

METLIN ID: 2758 SIGMA Prod: 184284

[http://metlin.scripps.edu/metabo\\_info.php?molid=2758](http://metlin.scripps.edu/metabo_info.php?molid=2758)

