

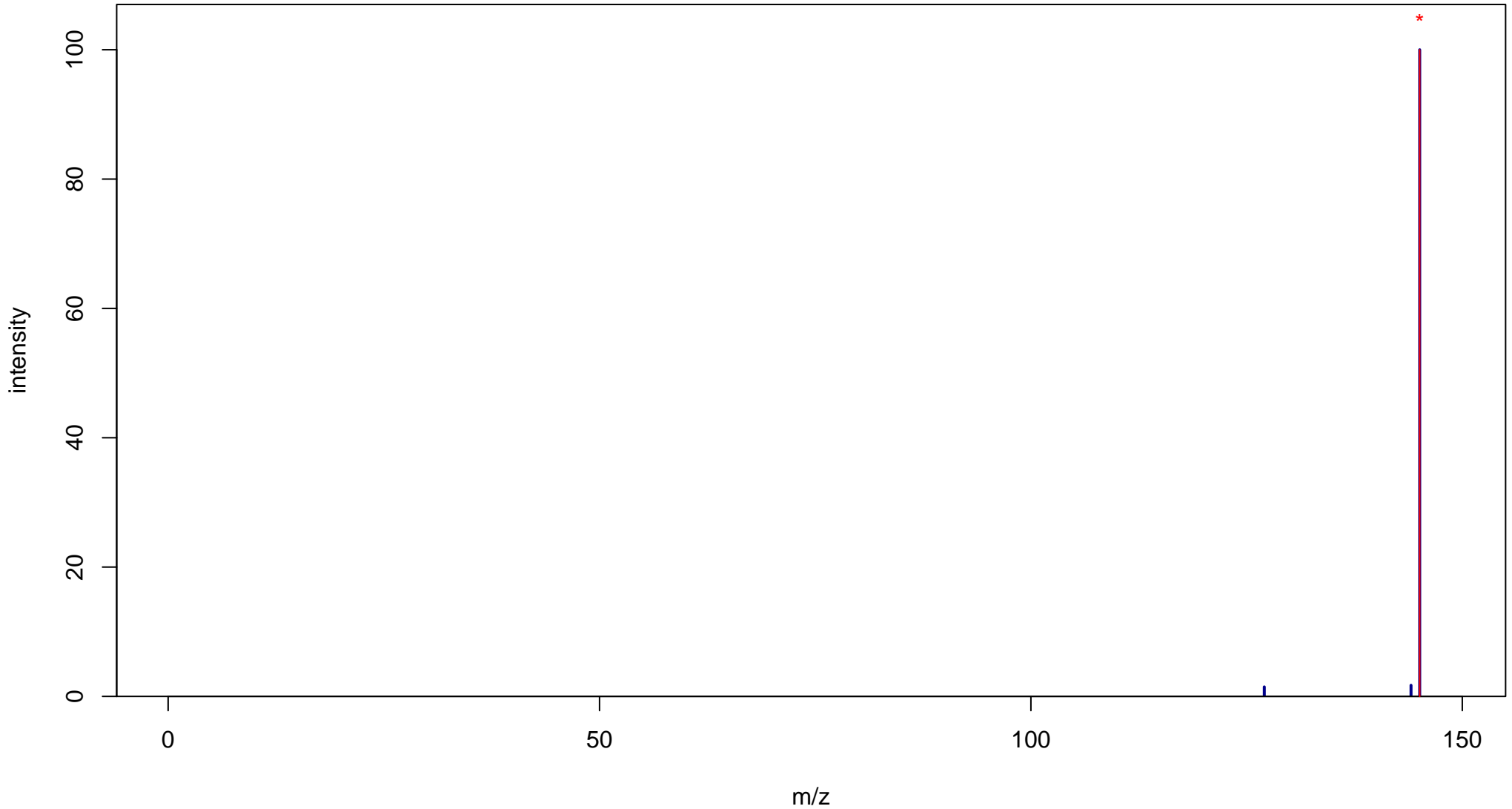
2-Naphthol

Mass: 144.0575 Formula: C₁₀H₈O

mode: + collisionE: 0V

METLIN ID: 65361 SIGMA Prod: 185507

http://metlin.scripps.edu/metabo_info.php?molid=65361



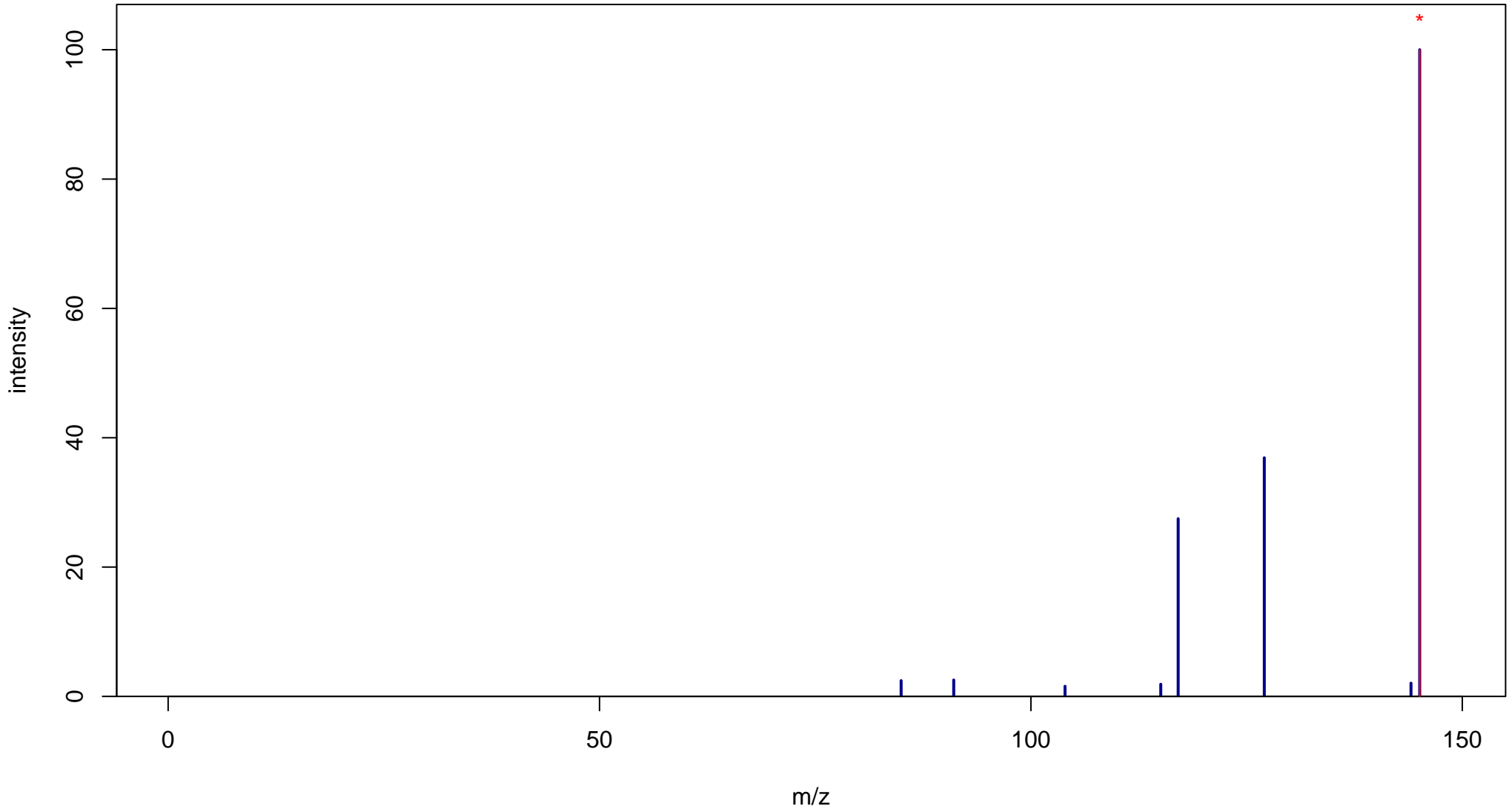
2-Naphthol

Mass: 144.0575 Formula: C₁₀H₈O

mode: + collisionE: 10V

METLIN ID: 65361 SIGMA Prod: 185507

http://metlin.scripps.edu/metabo_info.php?molid=65361



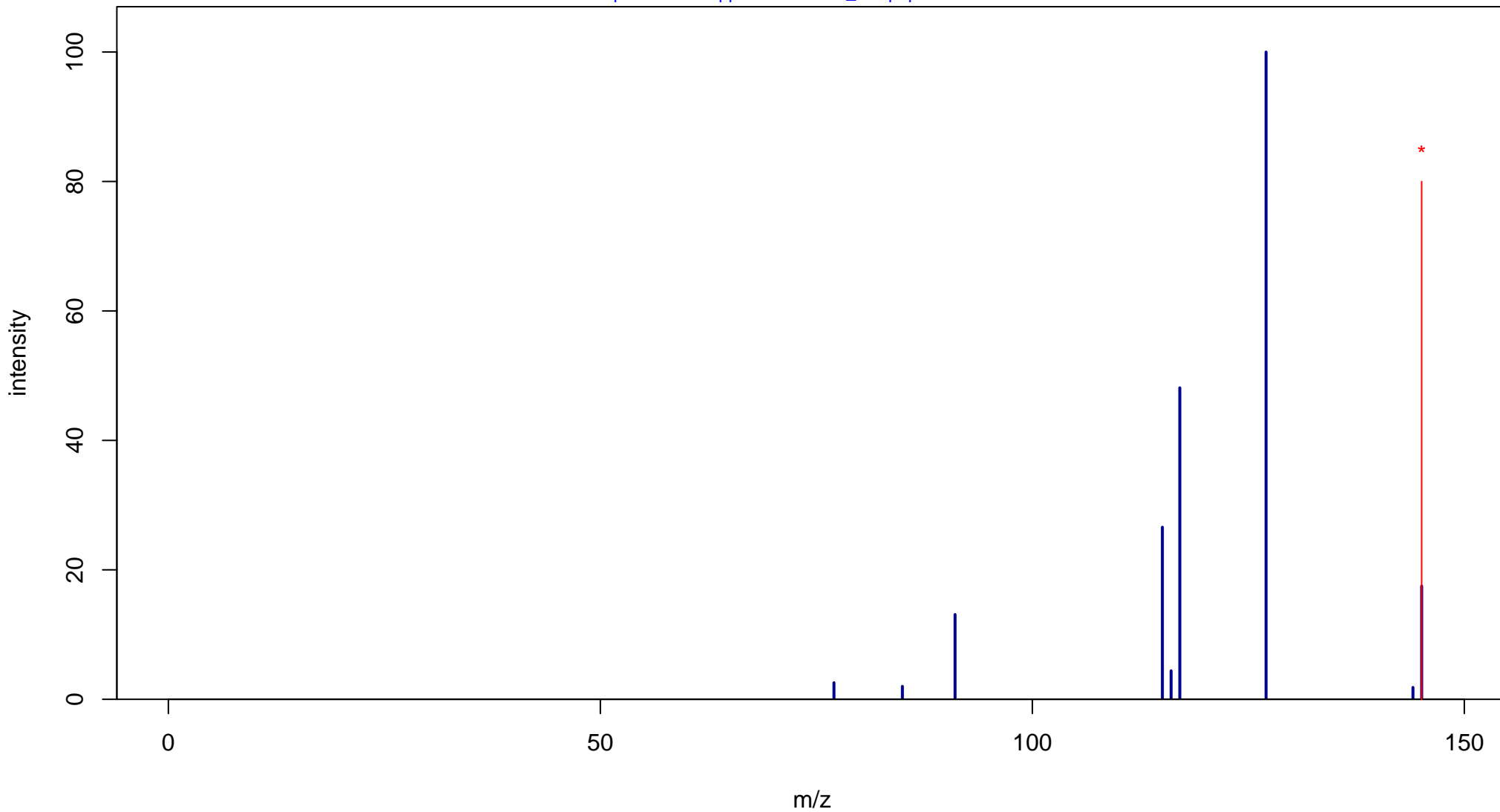
2-Naphthol

Mass: 144.0575 Formula: C₁₀H₈O

mode: + collisionE: 20V

METLIN ID: 65361 SIGMA Prod: 185507

http://metlin.scripps.edu/metabo_info.php?molid=65361



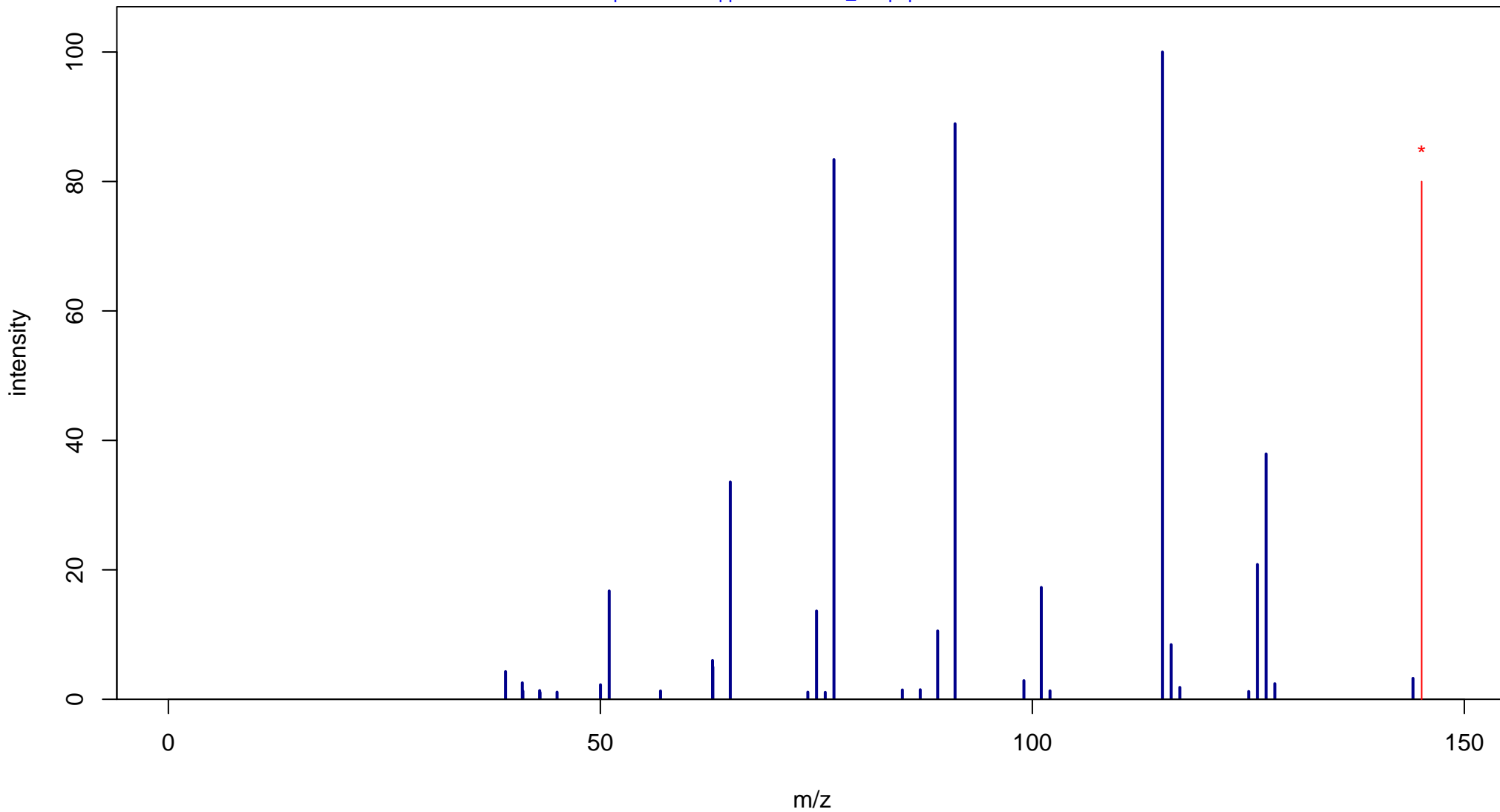
2-Naphthol

Mass: 144.0575 Formula: C₁₀H₈O

mode: + collisionE: 40V

METLIN ID: 65361 SIGMA Prod: 185507

http://metlin.scripps.edu/metabo_info.php?molid=65361



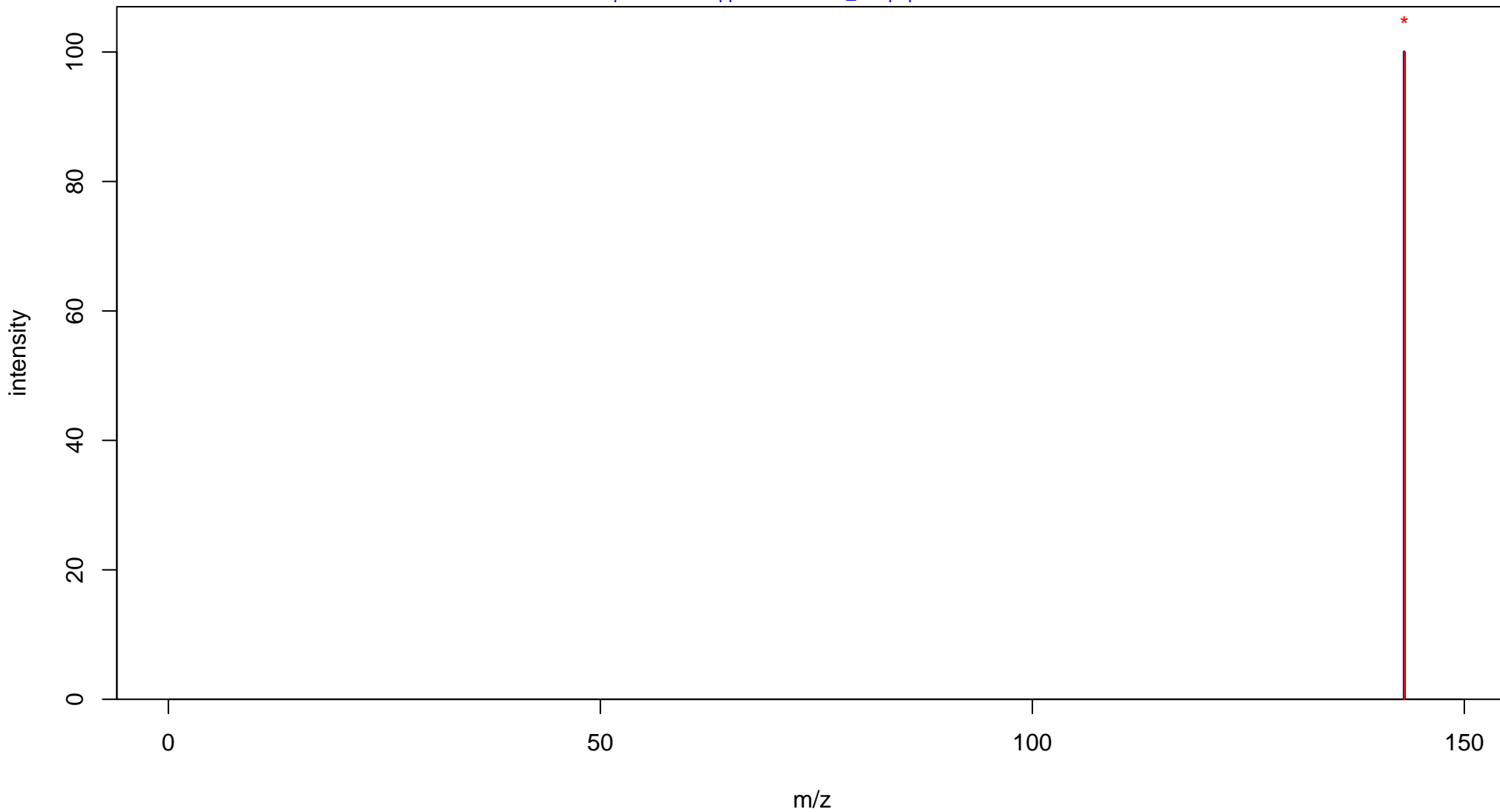
2-Naphthol

Mass: 144.0575 Formula: C₁₀H₈O

mode: - collisionE: 0V

METLIN ID: 65361 SIGMA Prod: 185507

http://metlin.scripps.edu/metabo_info.php?molid=65361



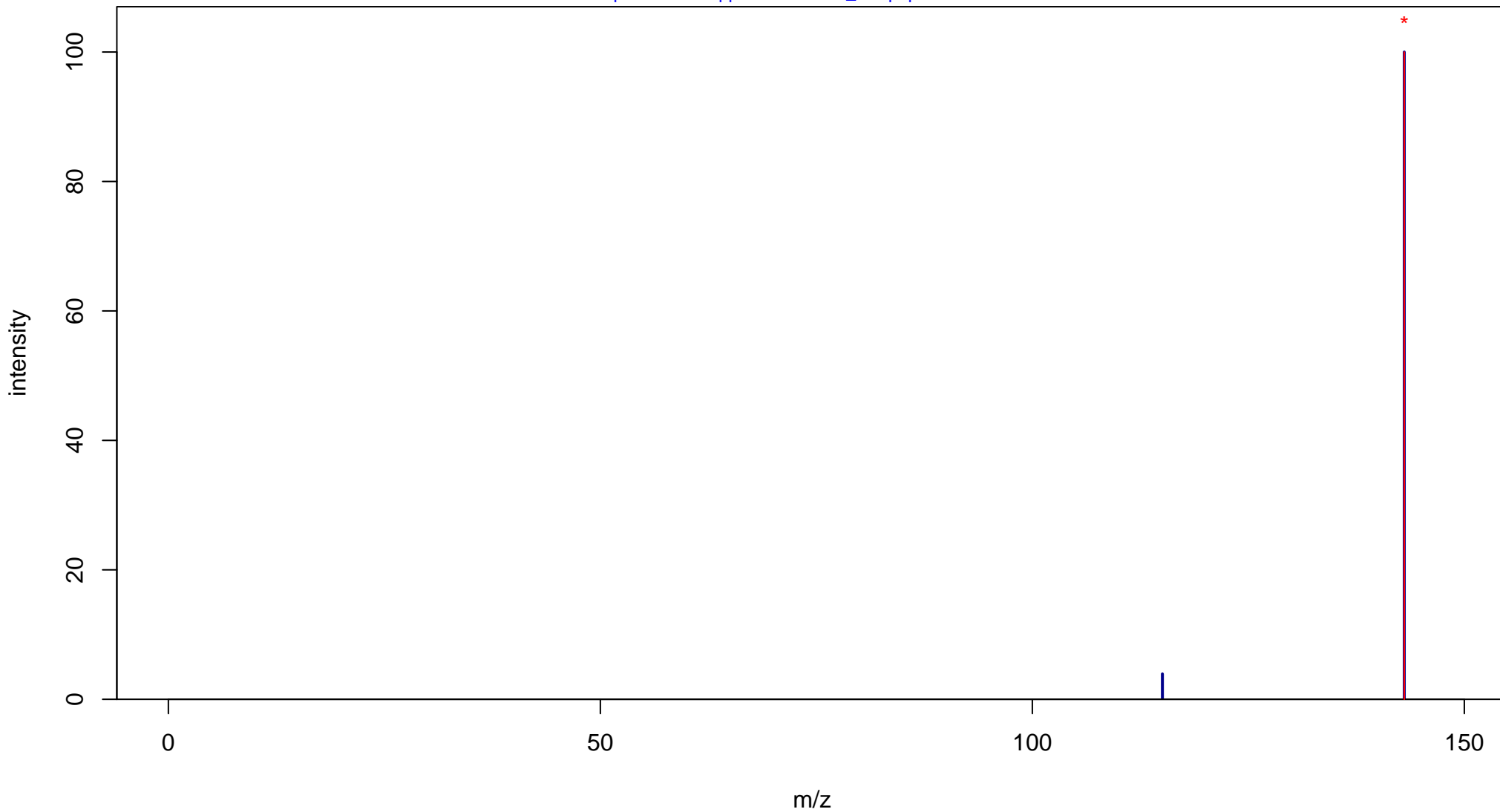
2-Naphthol

Mass: 144.0575 Formula: C₁₀H₈O

mode: - collisionE: 10V

METLIN ID: 65361 SIGMA Prod: 185507

http://metlin.scripps.edu/metabo_info.php?molid=65361



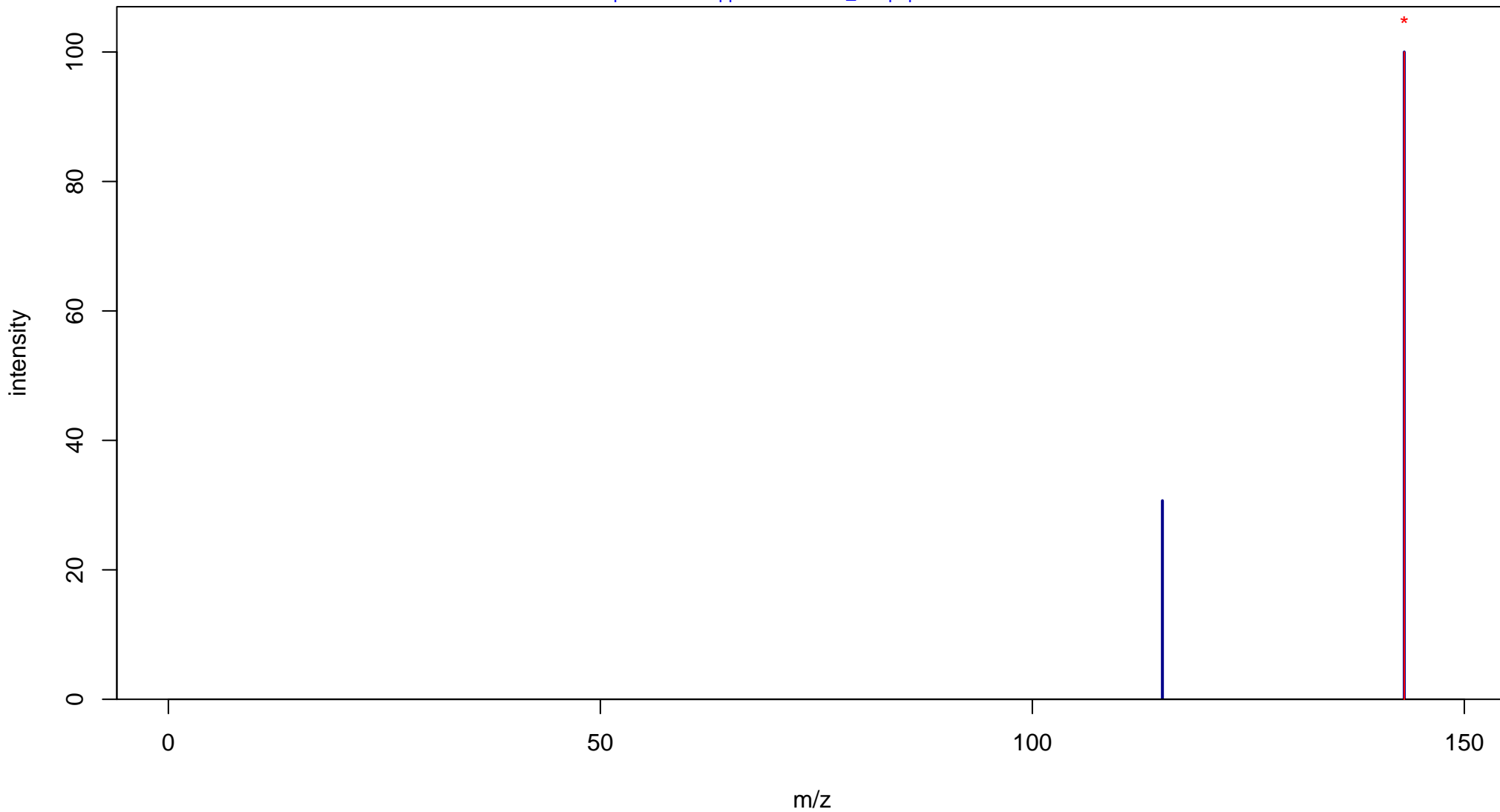
2-Naphthol

Mass: 144.0575 Formula: C₁₀H₈O

mode: - collisionE: 20V

METLIN ID: 65361 SIGMA Prod: 185507

http://metlin.scripps.edu/metabo_info.php?molid=65361



2-Naphthol

Mass: 144.0575 Formula: C₁₀H₈O

mode: - collisionE: 40V

METLIN ID: 65361 SIGMA Prod: 185507

http://metlin.scripps.edu/metabo_info.php?molid=65361

