

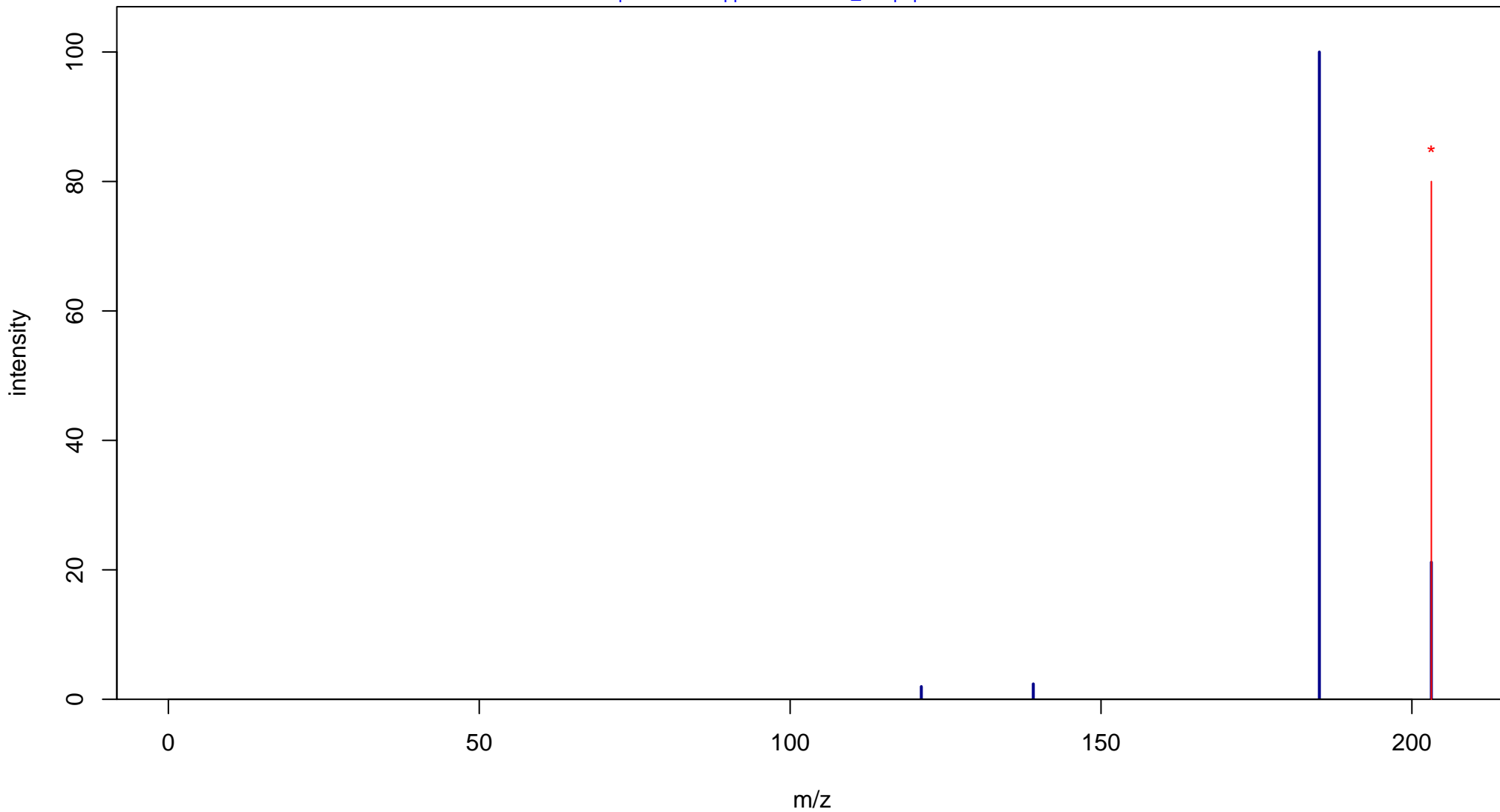
# Sebacic acid

Mass: 202.1205 Formula: C<sub>10</sub>H<sub>18</sub>O<sub>4</sub>

mode: + collisionE: 0V

METLIN ID: 4240 SIGMA Prod: 283258

[http://metlin.scripps.edu/metabo\\_info.php?molid=4240](http://metlin.scripps.edu/metabo_info.php?molid=4240)



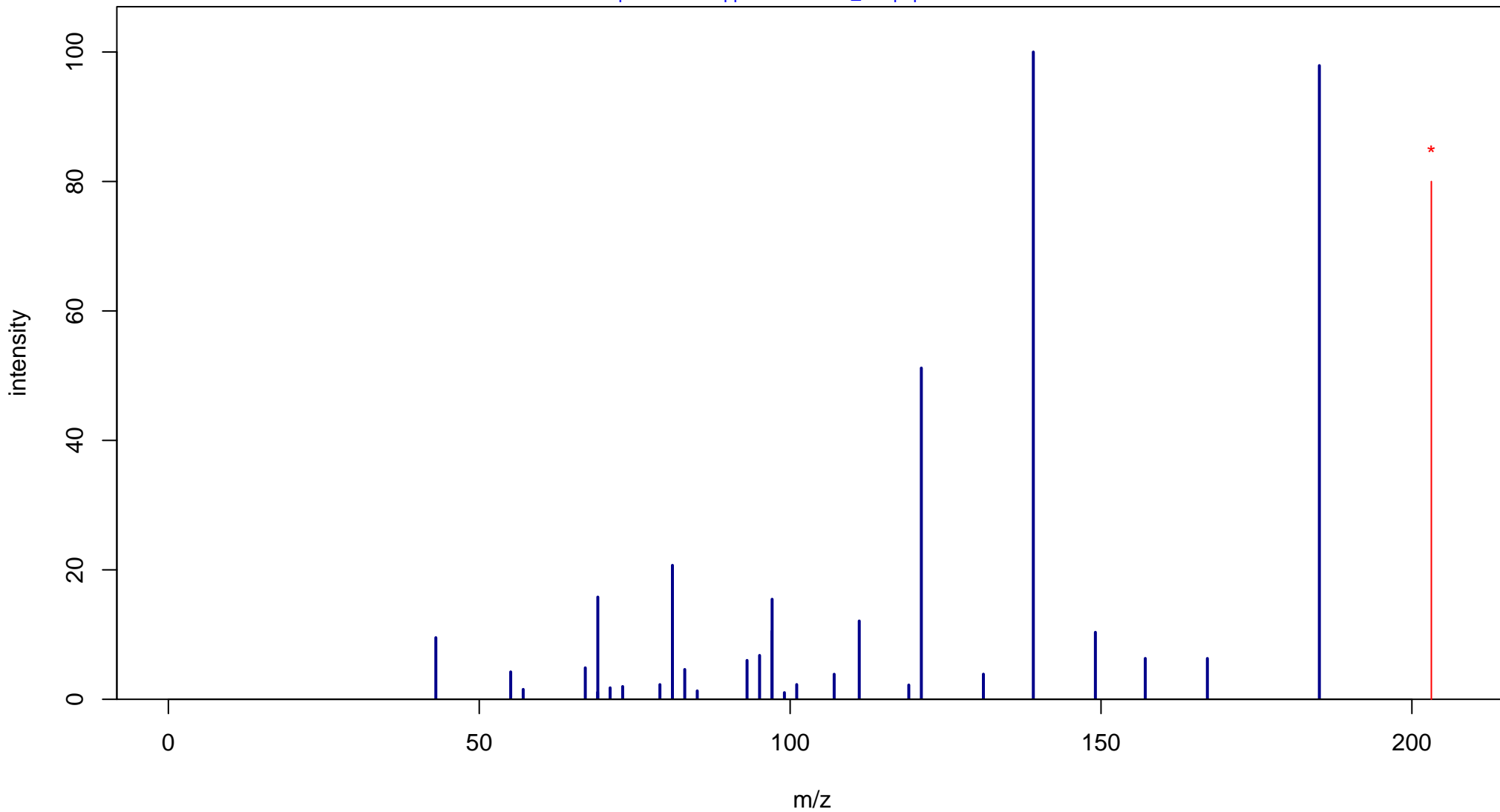
# Sebacic acid

Mass: 202.1205 Formula: C<sub>10</sub>H<sub>18</sub>O<sub>4</sub>

mode: + collisionE: 10V

METLIN ID: 4240 SIGMA Prod: 283258

[http://metlin.scripps.edu/metabo\\_info.php?molid=4240](http://metlin.scripps.edu/metabo_info.php?molid=4240)



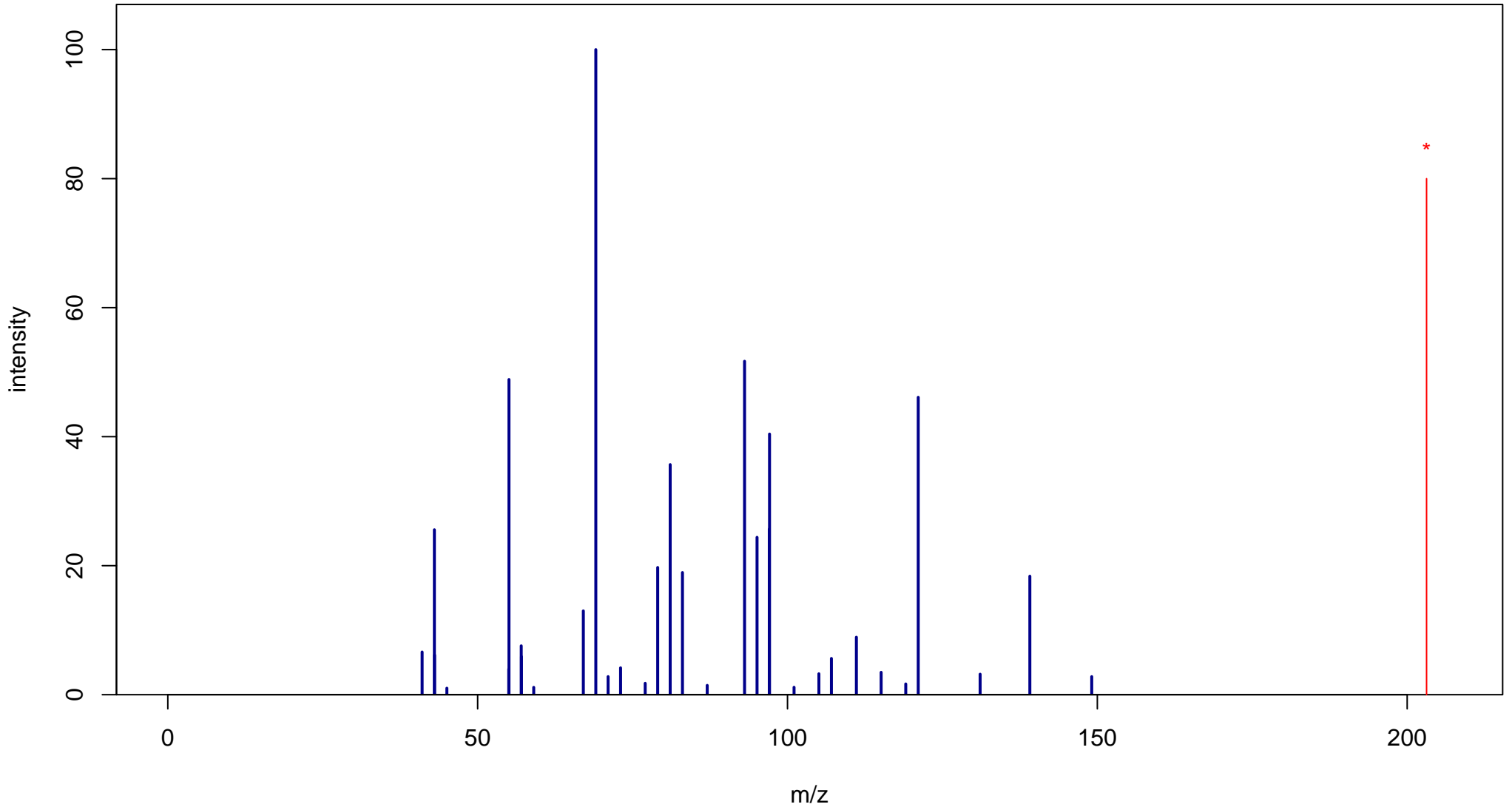
# Sebacic acid

Mass: 202.1205 Formula: C<sub>10</sub>H<sub>18</sub>O<sub>4</sub>

mode: + collisionE: 20V

METLIN ID: 4240 SIGMA Prod: 283258

[http://metlin.scripps.edu/metabo\\_info.php?molid=4240](http://metlin.scripps.edu/metabo_info.php?molid=4240)



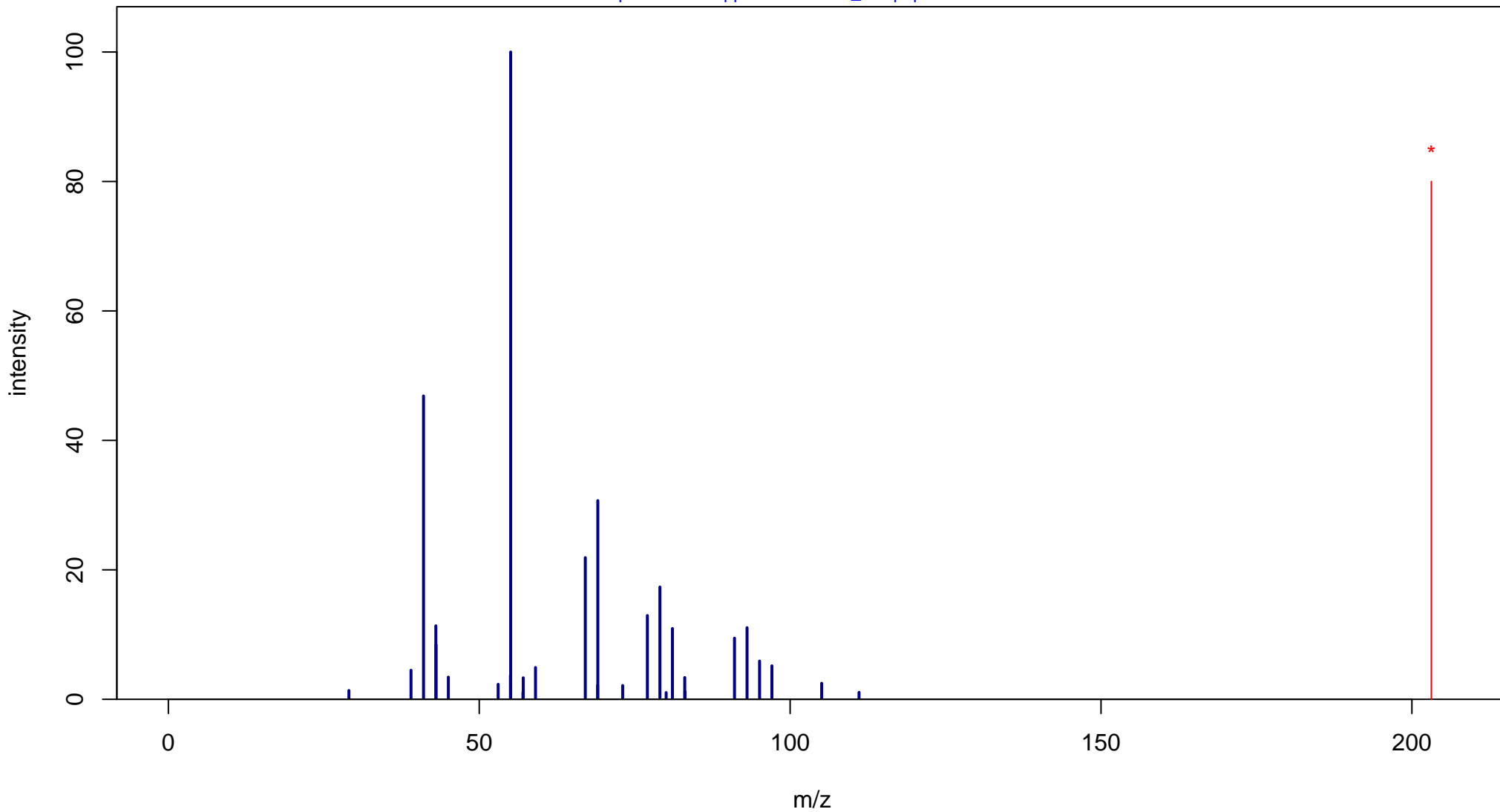
# Sebacic acid

Mass: 202.1205 Formula: C<sub>10</sub>H<sub>18</sub>O<sub>4</sub>

mode: + collisionE: 40V

METLIN ID: 4240 SIGMA Prod: 283258

[http://metlin.scripps.edu/metabo\\_info.php?molid=4240](http://metlin.scripps.edu/metabo_info.php?molid=4240)



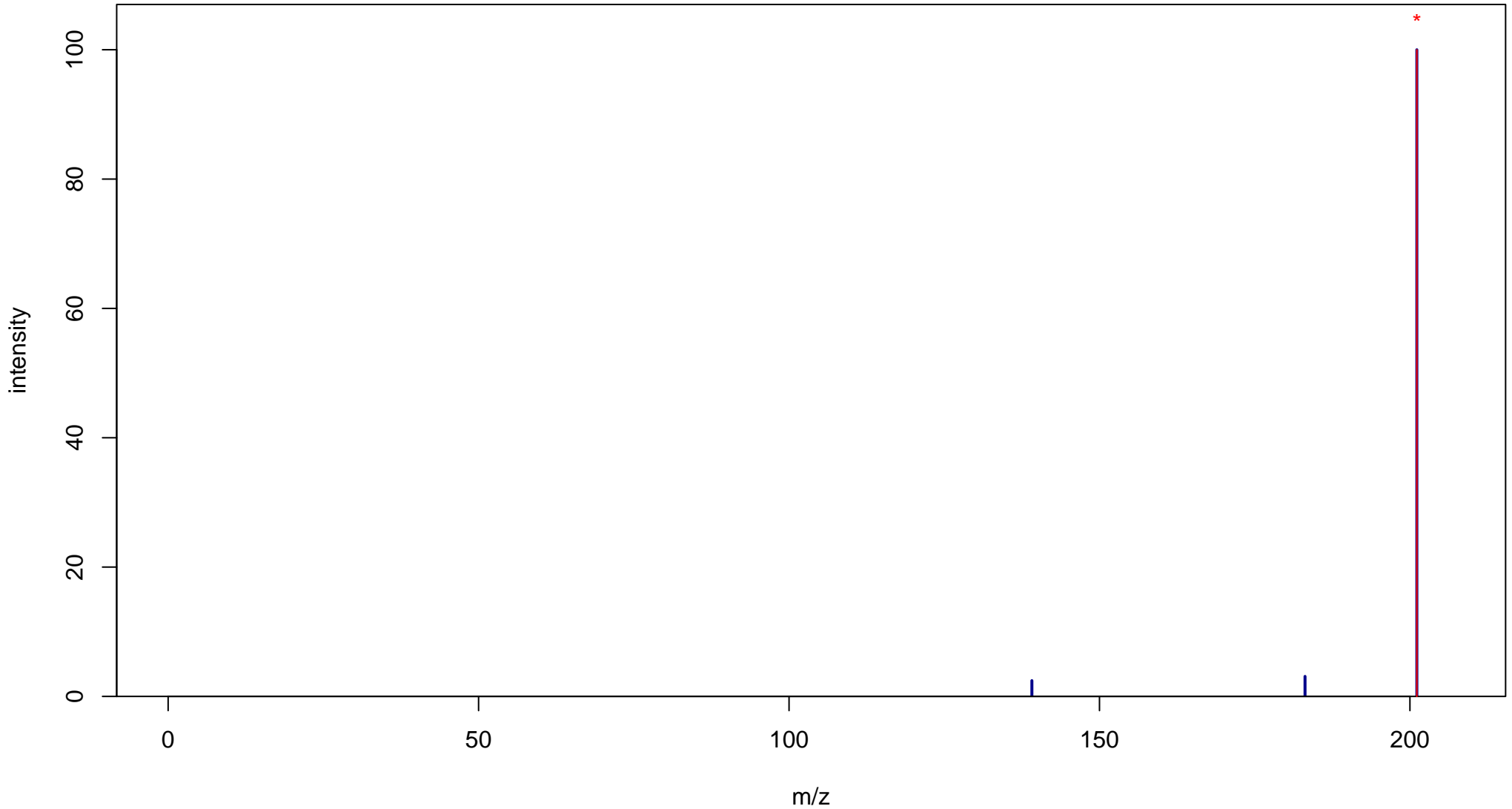
# Sebacic acid

Mass: 202.1205 Formula: C<sub>10</sub>H<sub>18</sub>O<sub>4</sub>

mode: - collisionE: 0V

METLIN ID: 4240 SIGMA Prod: 283258

[http://metlin.scripps.edu/metabo\\_info.php?molid=4240](http://metlin.scripps.edu/metabo_info.php?molid=4240)



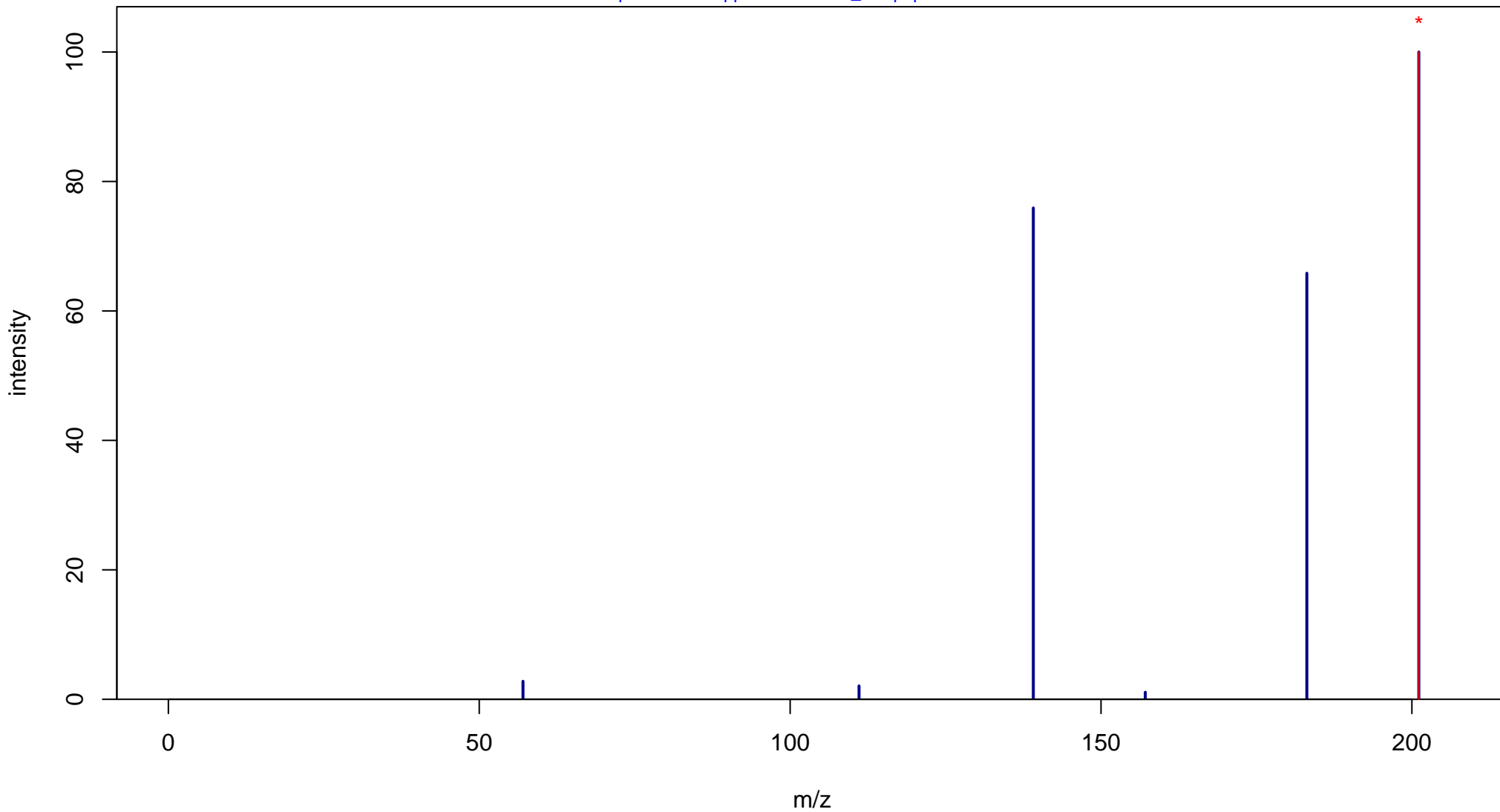
# Sebacic acid

Mass: 202.1205 Formula: C<sub>10</sub>H<sub>18</sub>O<sub>4</sub>

mode: - collisionE: 10V

METLIN ID: 4240 SIGMA Prod: 283258

[http://metlin.scripps.edu/metabo\\_info.php?molid=4240](http://metlin.scripps.edu/metabo_info.php?molid=4240)



# Sebacic acid

Mass: 202.1205 Formula: C<sub>10</sub>H<sub>18</sub>O<sub>4</sub>

mode: - collisionE: 20V

METLIN ID: 4240 SIGMA Prod: 283258

[http://metlin.scripps.edu/metabo\\_info.php?molid=4240](http://metlin.scripps.edu/metabo_info.php?molid=4240)

