

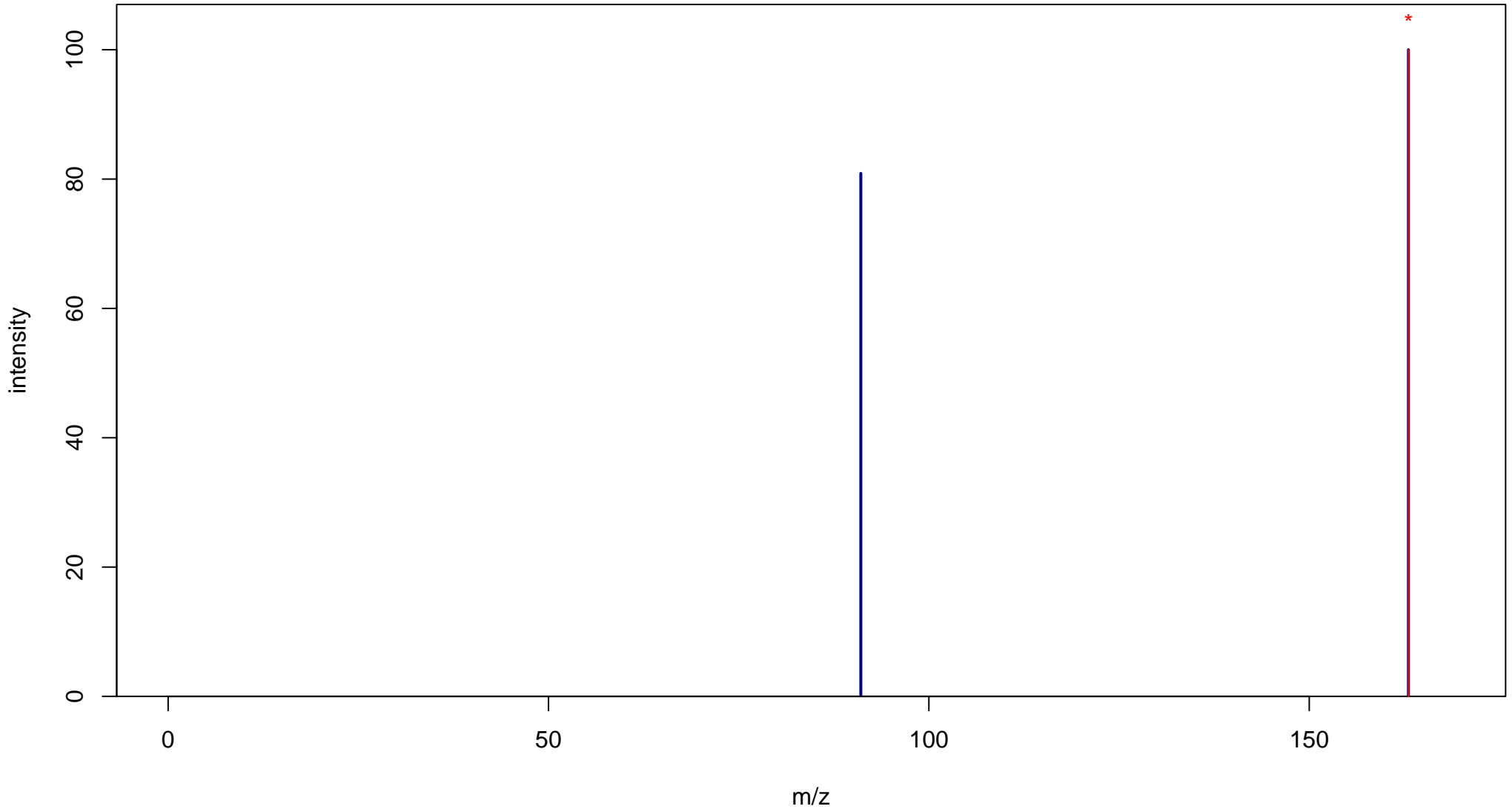
Phenylpyruvic acid

Mass: 164.0473 Formula: C₉H₈O₃

mode: - collisionE: 0V

METLIN ID: 328 SIGMA Prod: 286958

http://metlin.scripps.edu/metabo_info.php?molid=328



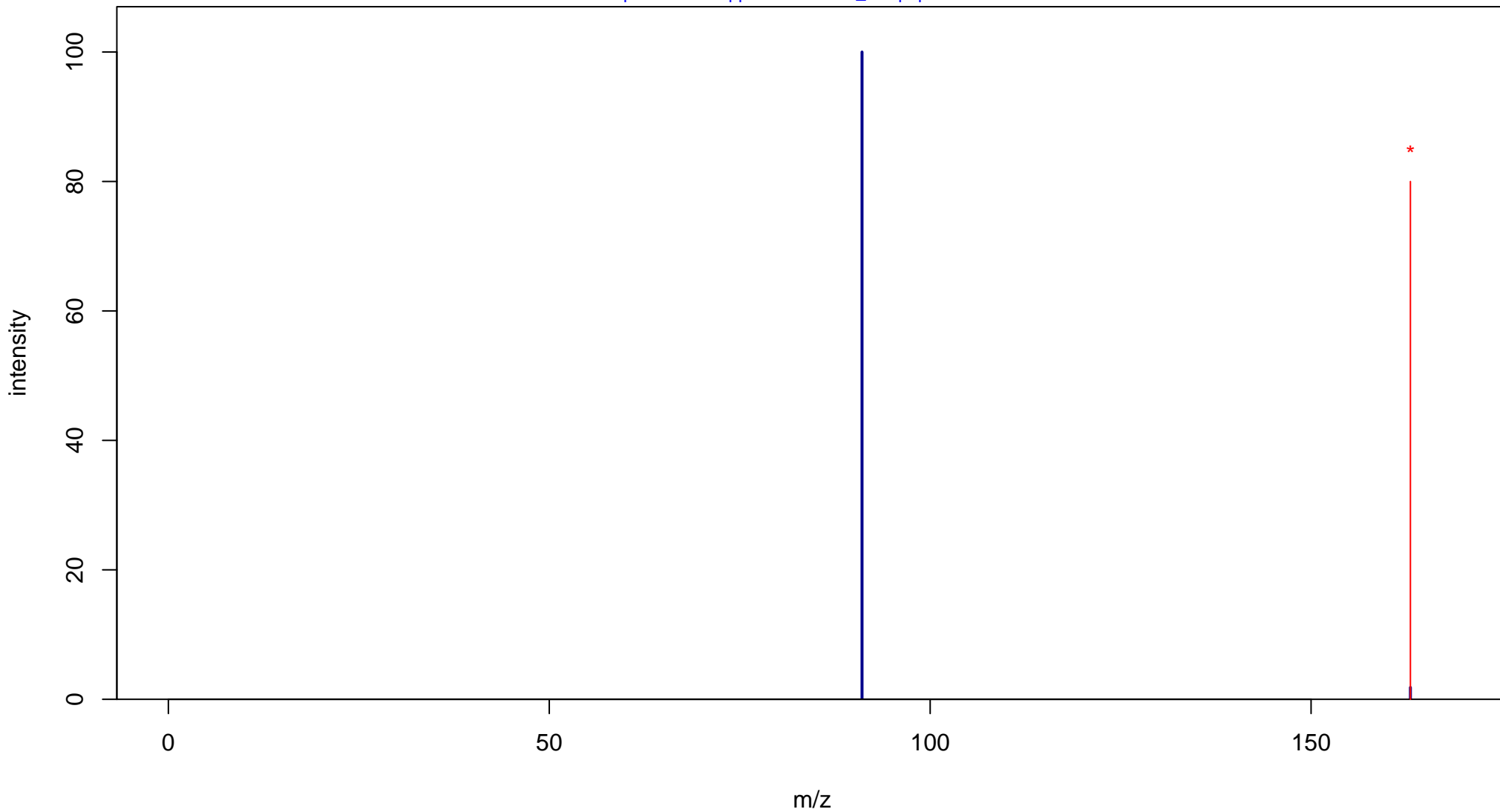
Phenylpyruvic acid

Mass: 164.0473 Formula: C₉H₈O₃

mode: - collisionE: 10V

METLIN ID: 328 SIGMA Prod: 286958

http://metlin.scripps.edu/metabo_info.php?molid=328



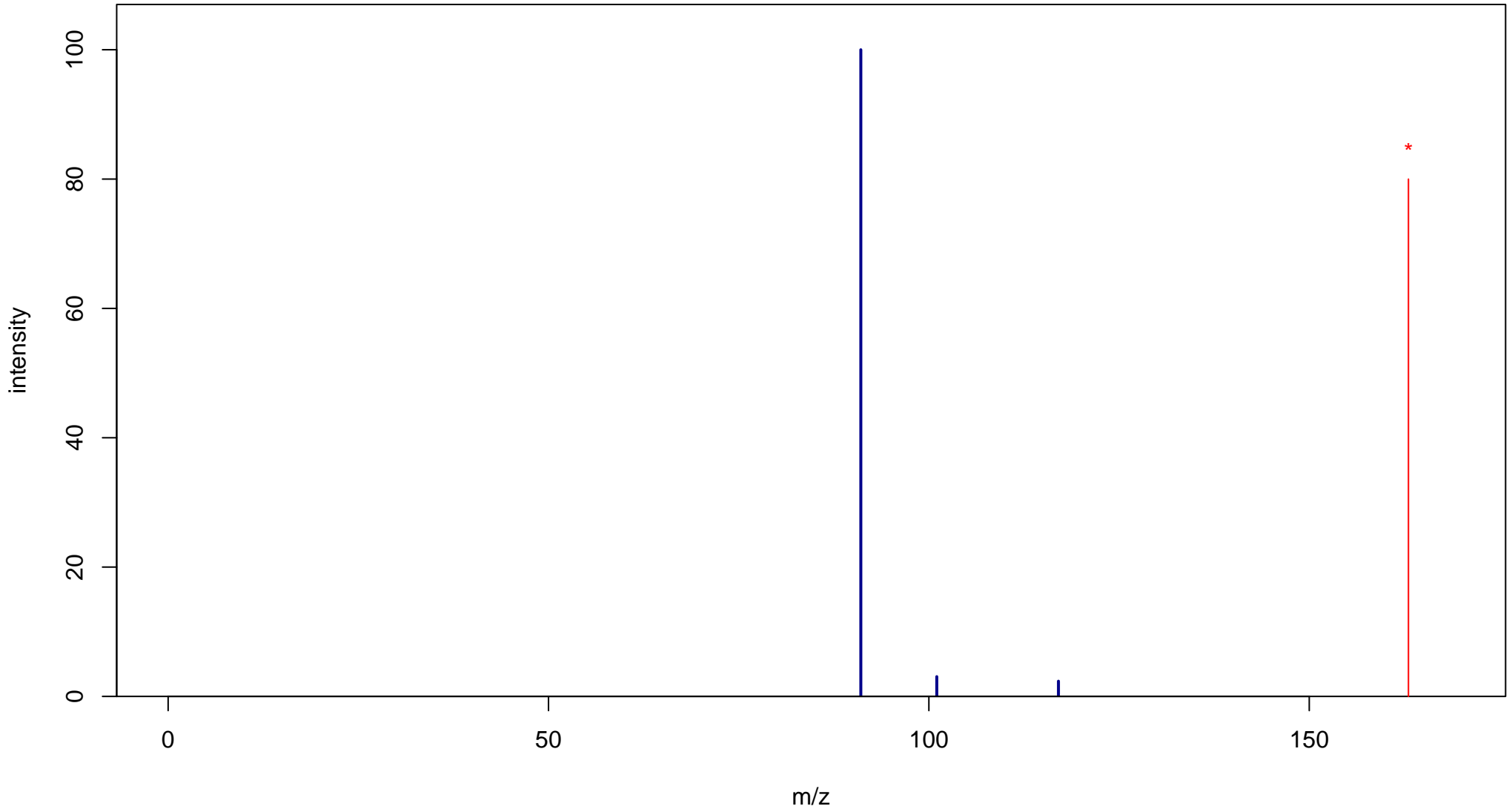
Phenylpyruvic acid

Mass: 164.0473 Formula: C₉H₈O₃

mode: - collisionE: 20V

METLIN ID: 328 SIGMA Prod: 286958

http://metlin.scripps.edu/metabo_info.php?molid=328



Phenylpyruvic acid

Mass: 164.0473 Formula: C₉H₈O₃

mode: - collisionE: 40V

METLIN ID: 328 SIGMA Prod: 286958

http://metlin.scripps.edu/metabo_info.php?molid=328

