

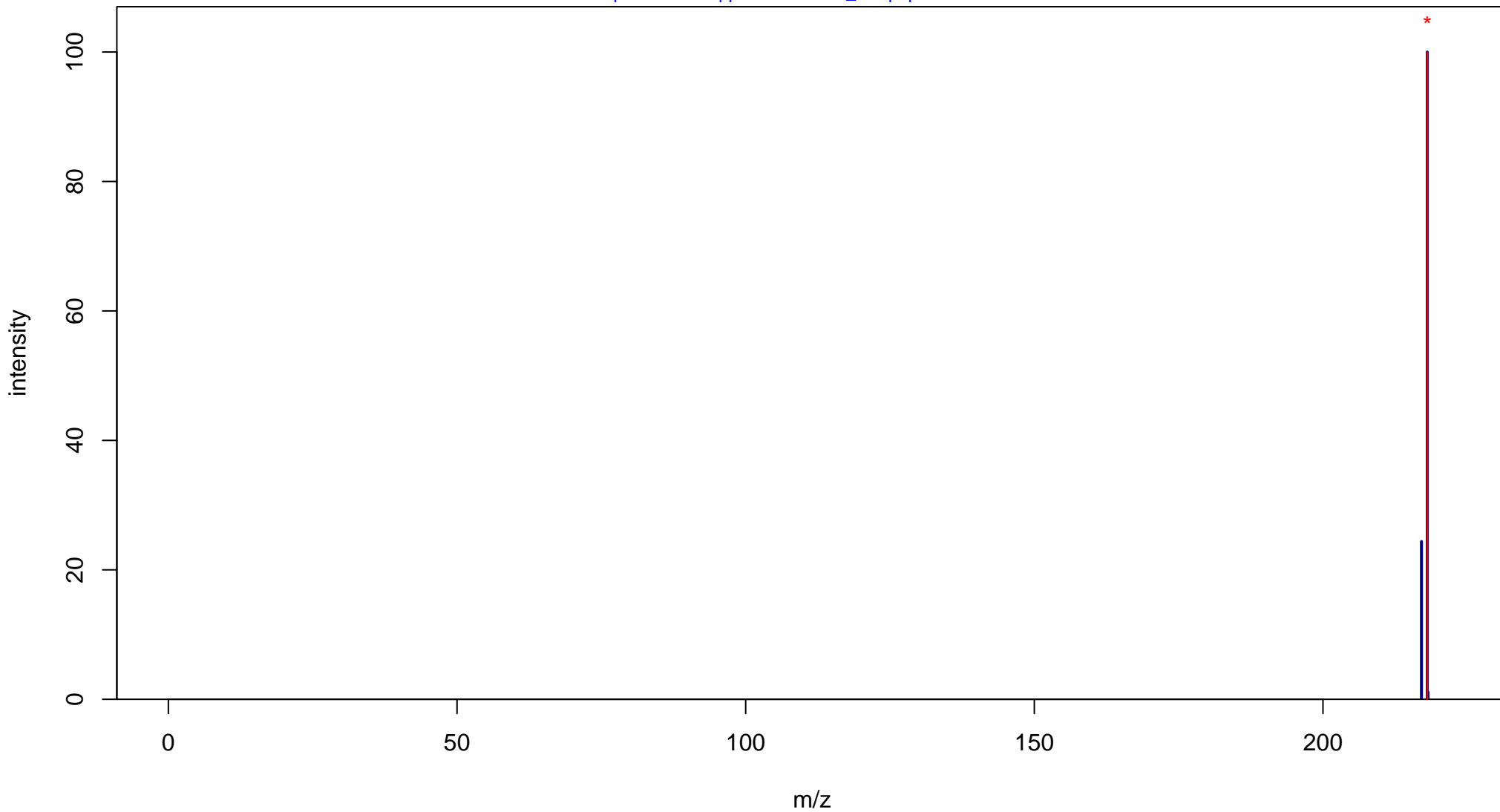
1-Hydroxypyrene

Mass: 218.0732 Formula: C₁₆H₁₀O

mode: + collisionE: 0V

METLIN ID: 64943 SIGMA Prod: 361518

http://metlin.scripps.edu/metabo_info.php?molid=64943



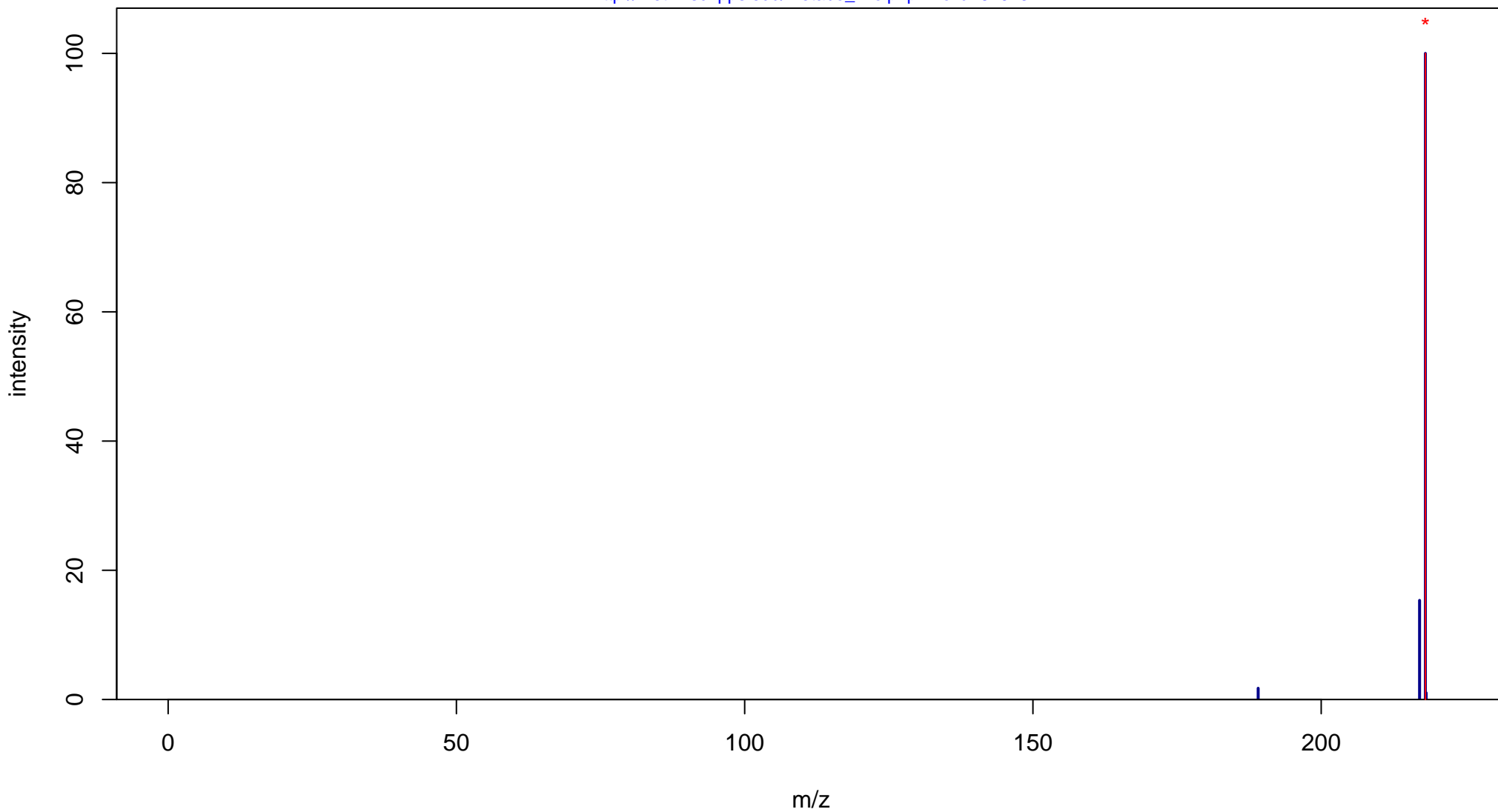
1-Hydroxypyrene

Mass: 218.0732 Formula: C₁₆H₁₀O

mode: + collisionE: 10V

METLIN ID: 64943 SIGMA Prod: 361518

http://metlin.scripps.edu/metabo_info.php?molid=64943



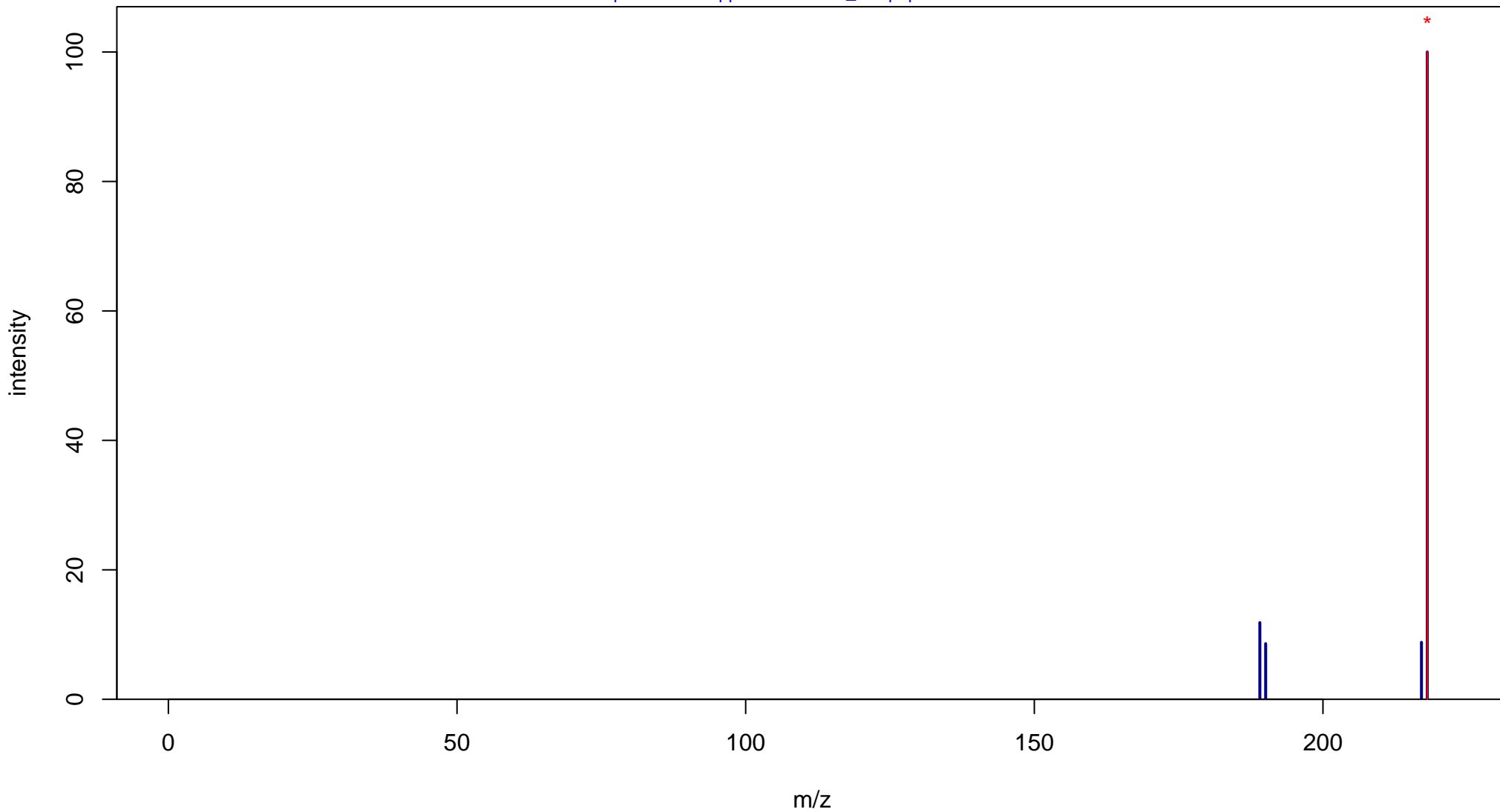
1-Hydroxypyrene

Mass: 218.0732 Formula: C₁₆H₁₀O

mode: + collisionE: 20V

METLIN ID: 64943 SIGMA Prod: 361518

http://metlin.scripps.edu/metabo_info.php?molid=64943



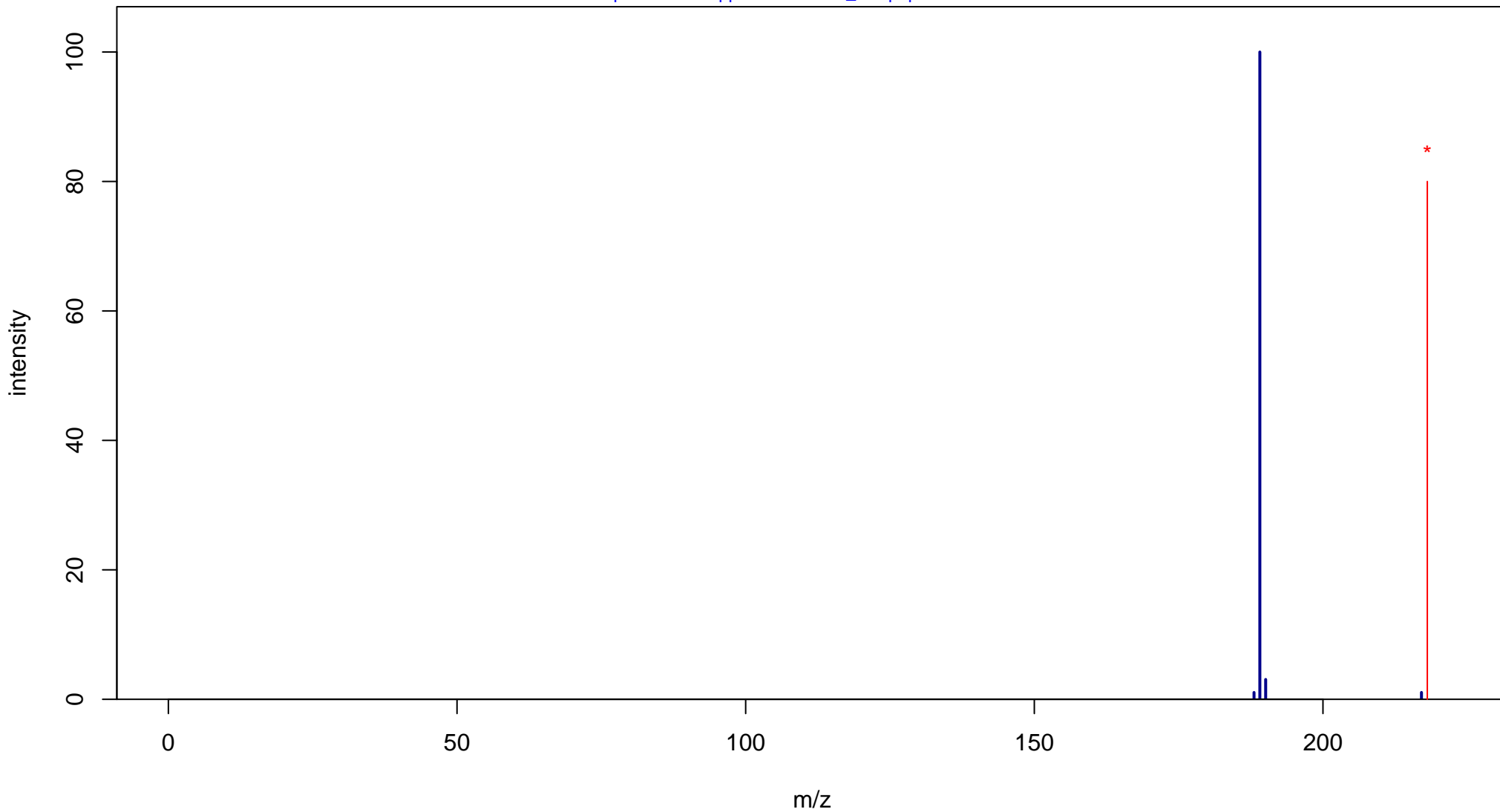
1-Hydroxypyrene

Mass: 218.0732 Formula: C₁₆H₁₀O

mode: + collisionE: 40V

METLIN ID: 64943 SIGMA Prod: 361518

http://metlin.scripps.edu/metabo_info.php?molid=64943



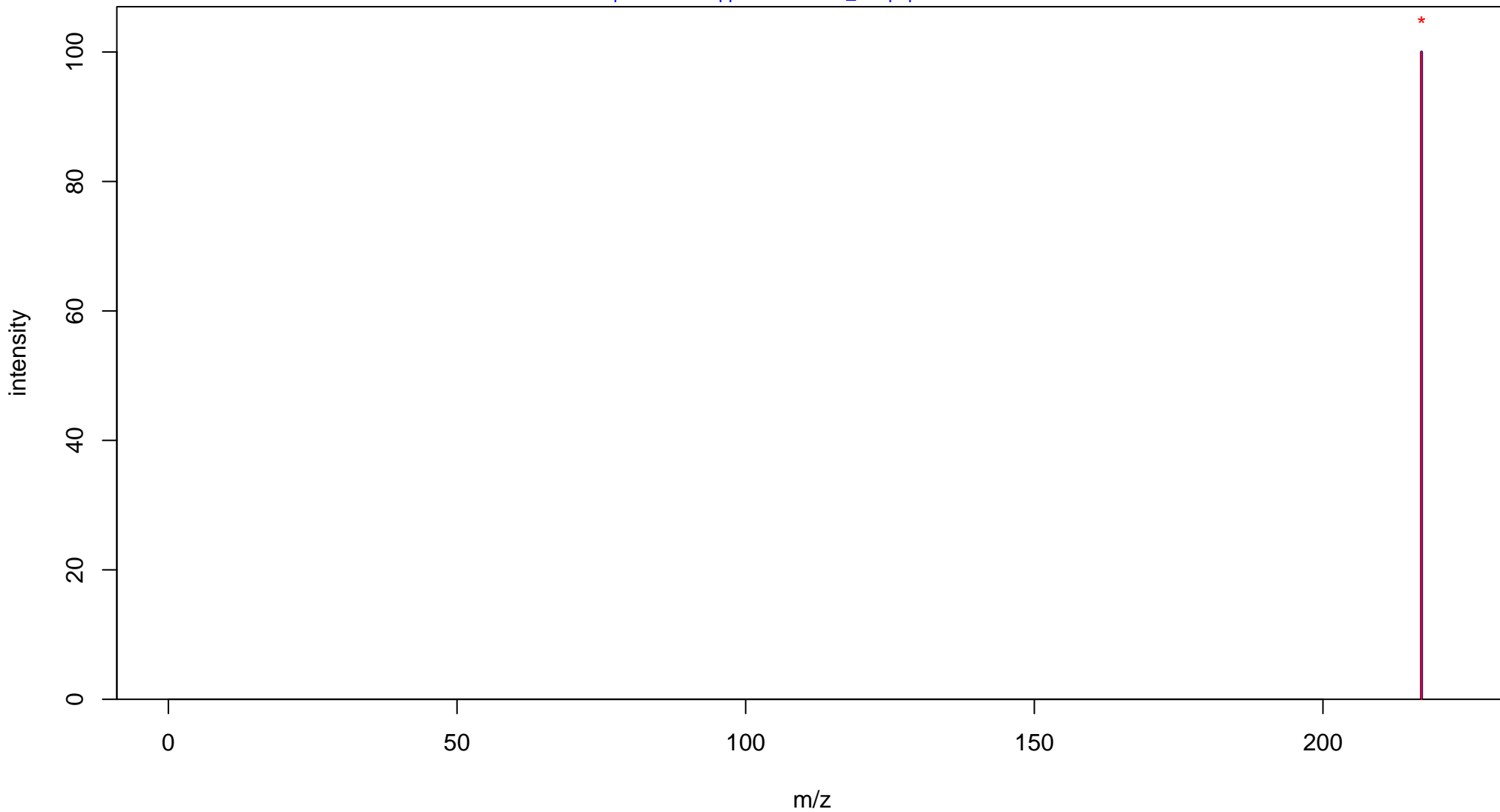
1-Hydroxypyrene

Mass: 218.0732 Formula: C₁₆H₁₀O

mode: - collisionE: 0V

METLIN ID: 64943 SIGMA Prod: 361518

http://metlin.scripps.edu/metabo_info.php?molid=64943



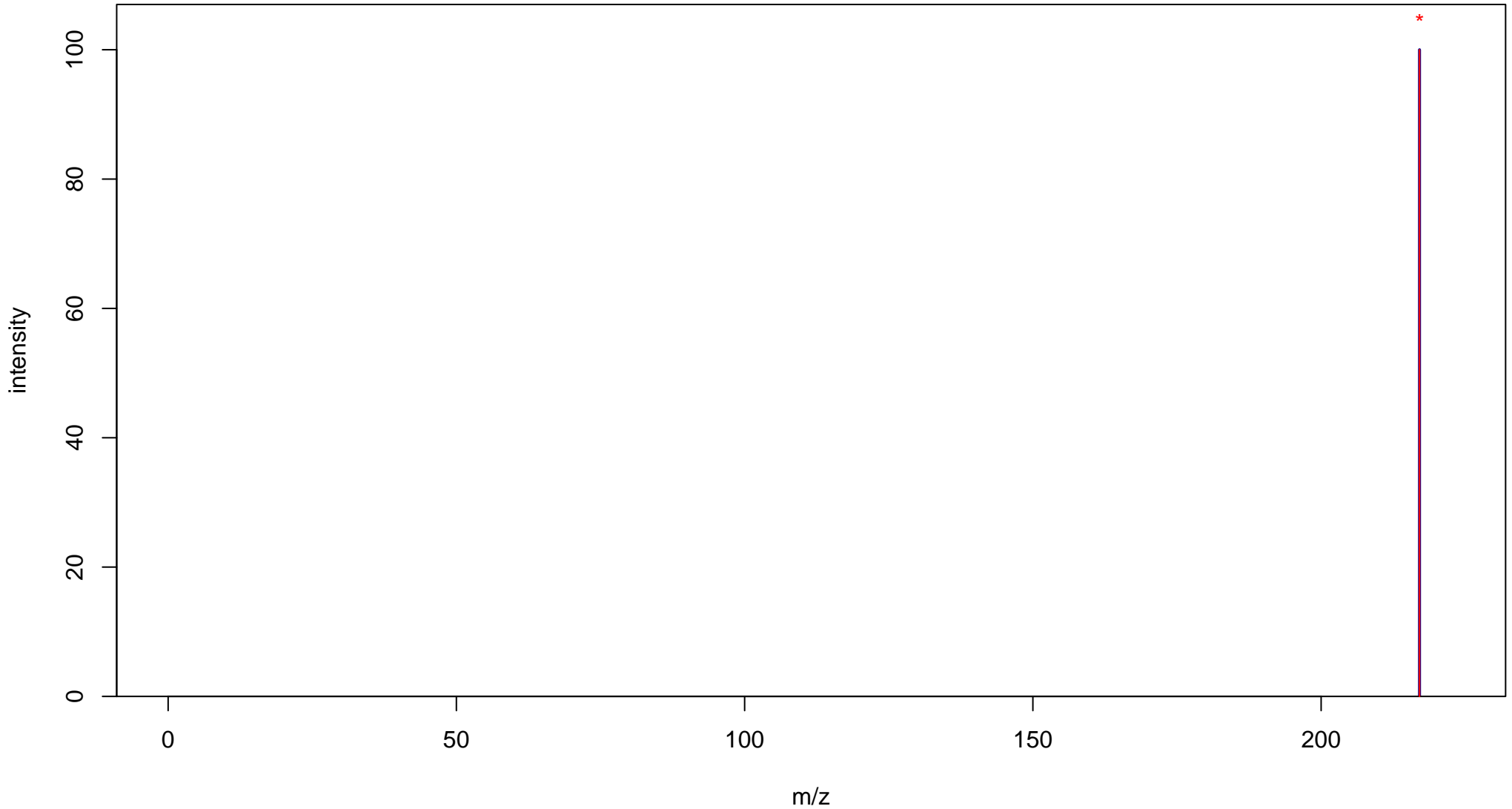
1-Hydroxypyrene

Mass: 218.0732 Formula: C₁₆H₁₀O

mode: - collisionE: 10V

METLIN ID: 64943 SIGMA Prod: 361518

http://metlin.scripps.edu/metabo_info.php?molid=64943



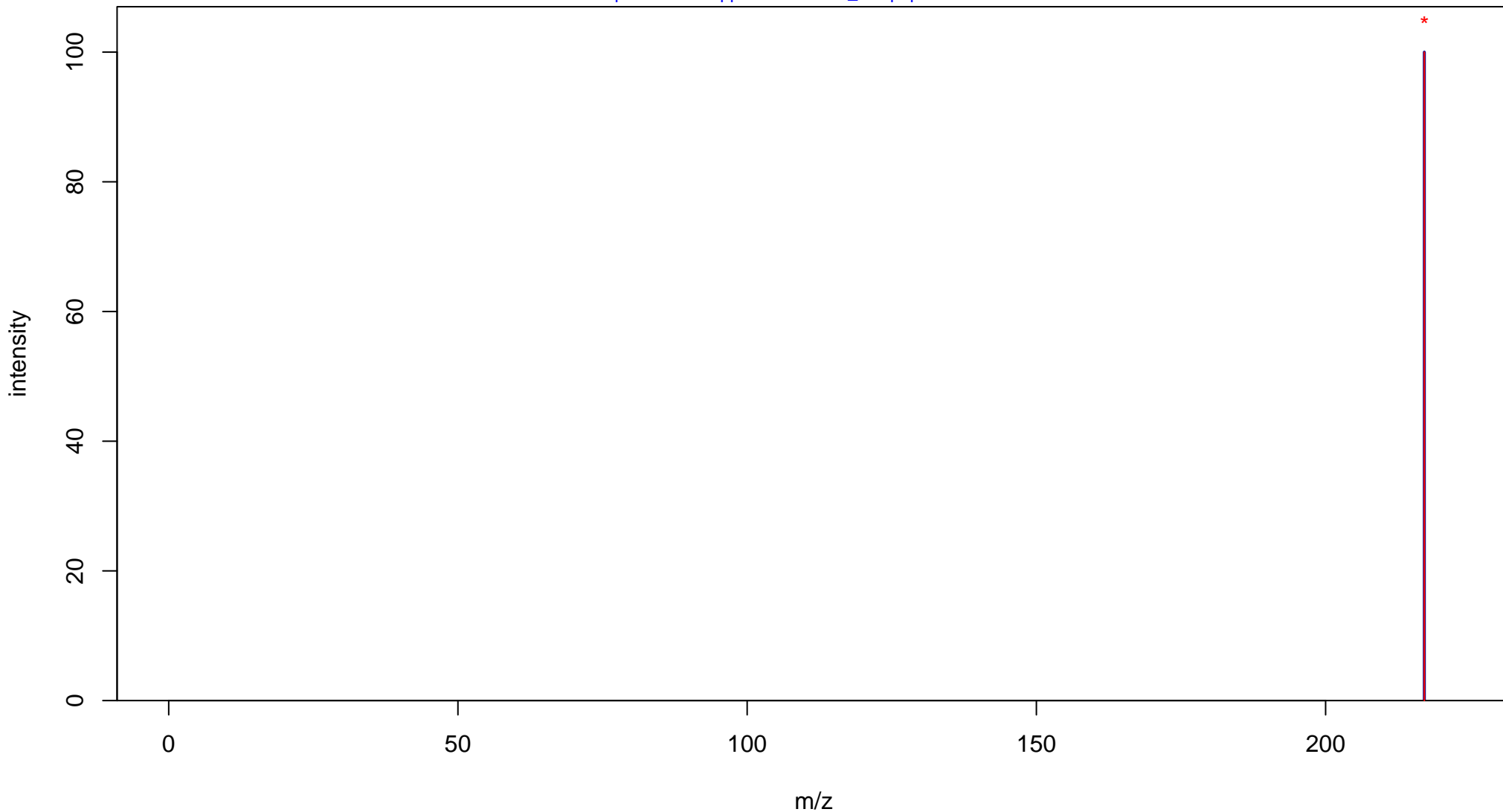
1-Hydroxypyrene

Mass: 218.0732 Formula: C₁₆H₁₀O

mode: - collisionE: 20V

METLIN ID: 64943 SIGMA Prod: 361518

http://metlin.scripps.edu/metabo_info.php?molid=64943



1-Hydroxypyrene

Mass: 218.0732 Formula: C₁₆H₁₀O

mode: - collisionE: 40V

METLIN ID: 64943 SIGMA Prod: 361518

http://metlin.scripps.edu/metabo_info.php?molid=64943

