

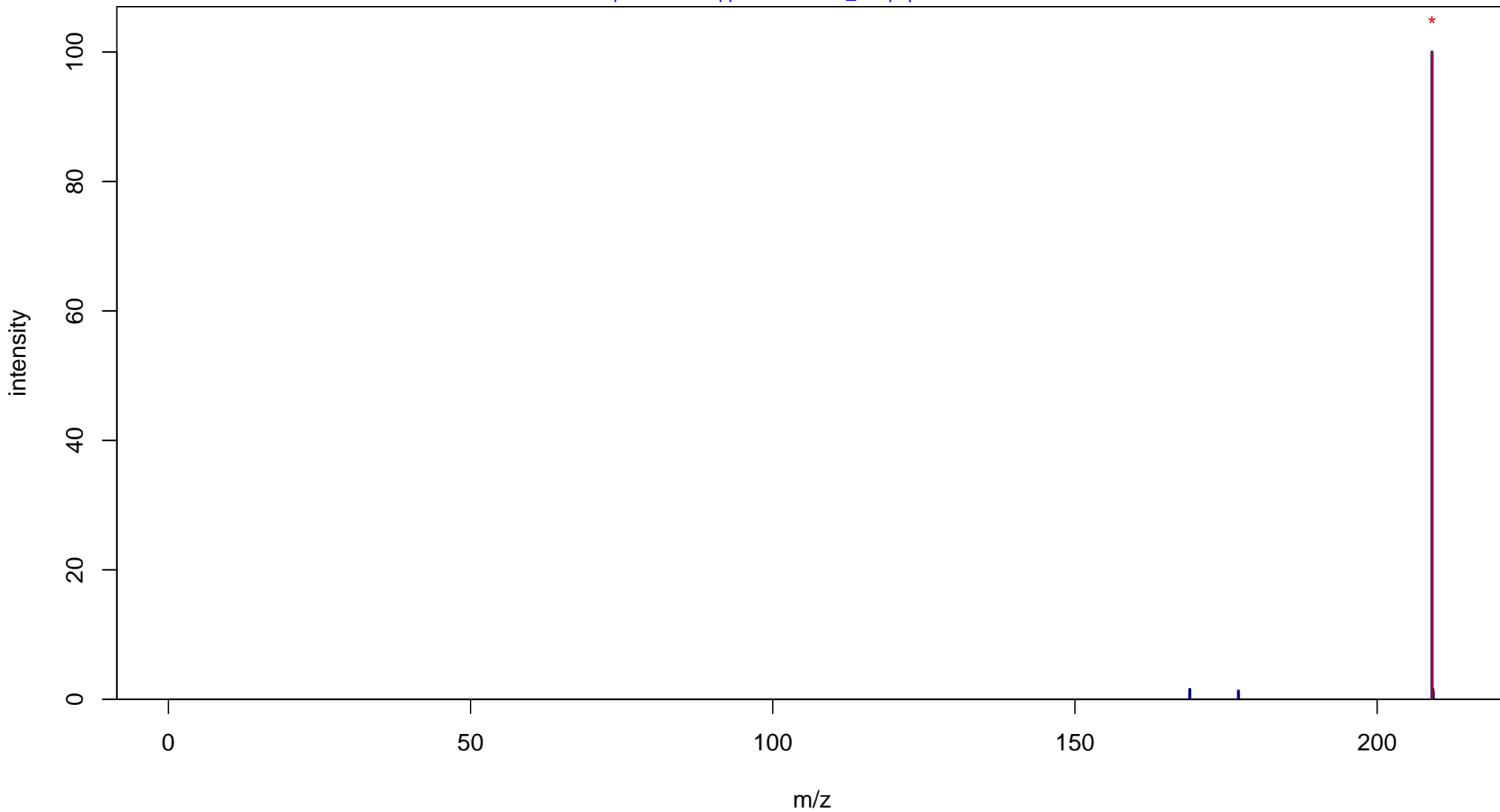
Sinapyl aldehyde

Mass: 208.0736 Formula: C₁₁H₁₂O₄

mode: + collisionE: 0V

METLIN ID: 44806 SIGMA Prod: 382159

http://metlin.scripps.edu/metabo_info.php?molid=44806



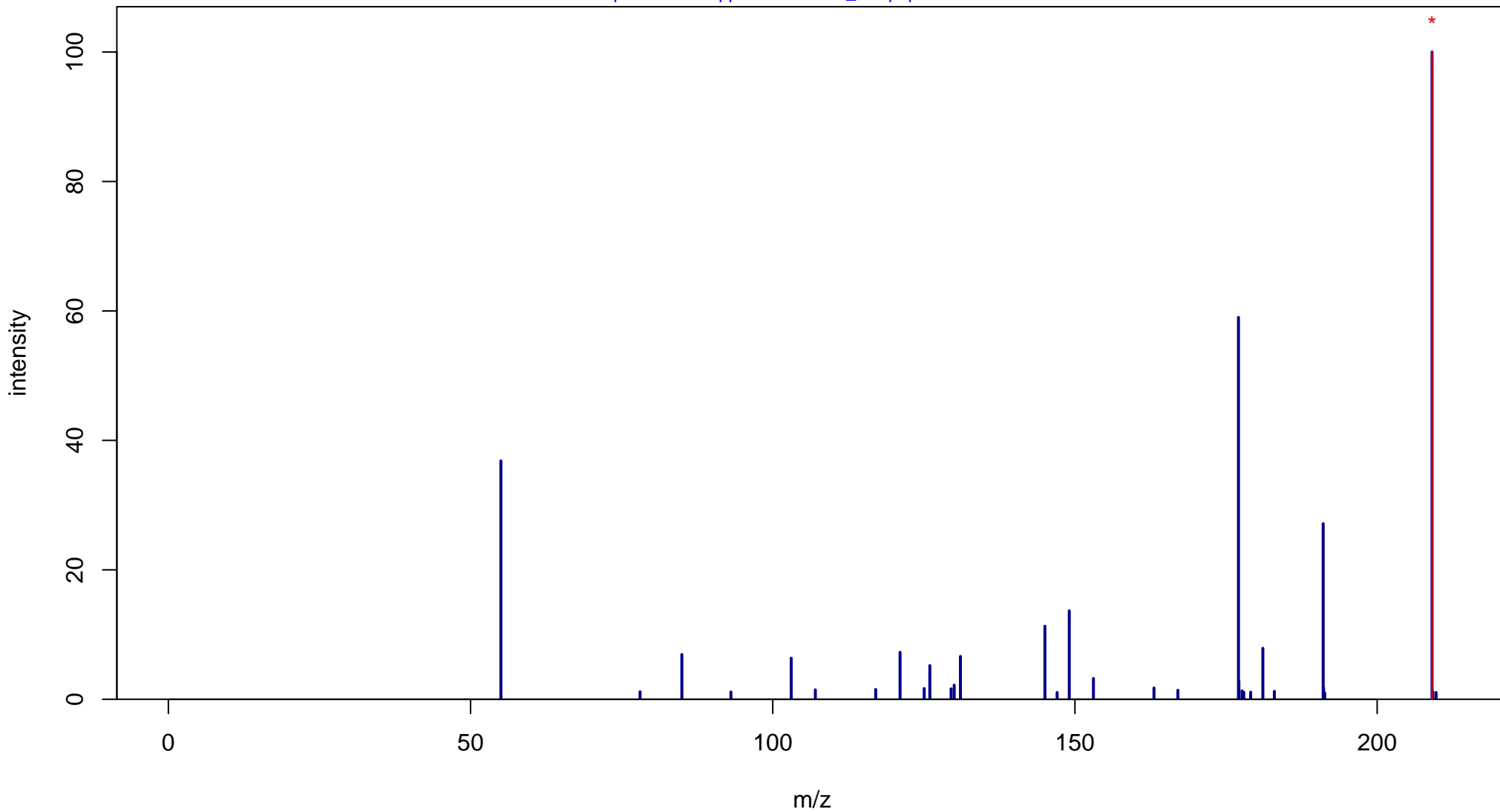
Sinapyl aldehyde

Mass: 208.0736 Formula: C₁₁H₁₂O₄

mode: + collisionE: 10V

METLIN ID: 44806 SIGMA Prod: 382159

http://metlin.scripps.edu/metabo_info.php?molid=44806



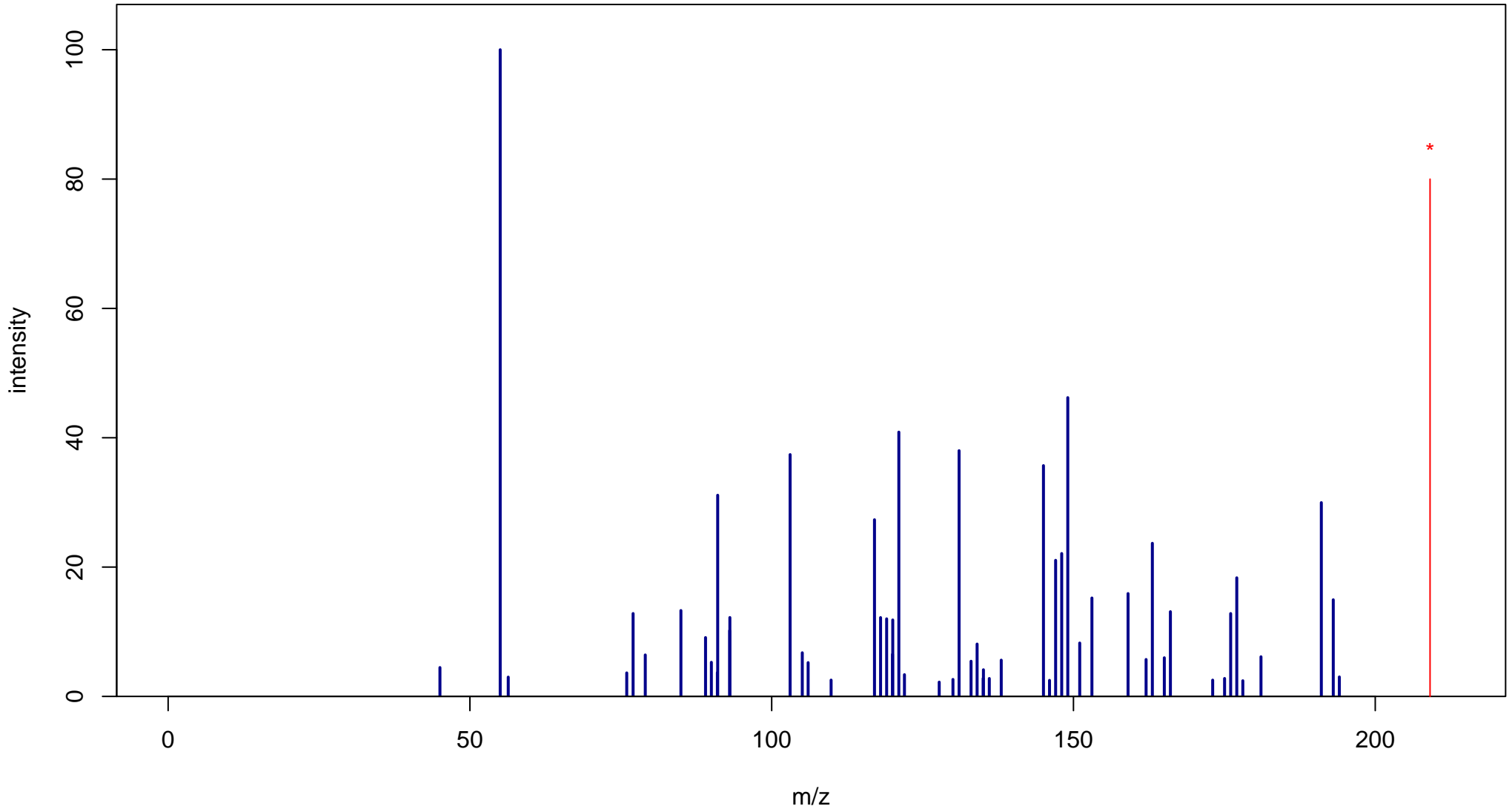
Sinapyl aldehyde

Mass: 208.0736 Formula: C₁₁H₁₂O₄

mode: + collisionE: 20V

METLIN ID: 44806 SIGMA Prod: 382159

http://metlin.scripps.edu/metabo_info.php?molid=44806



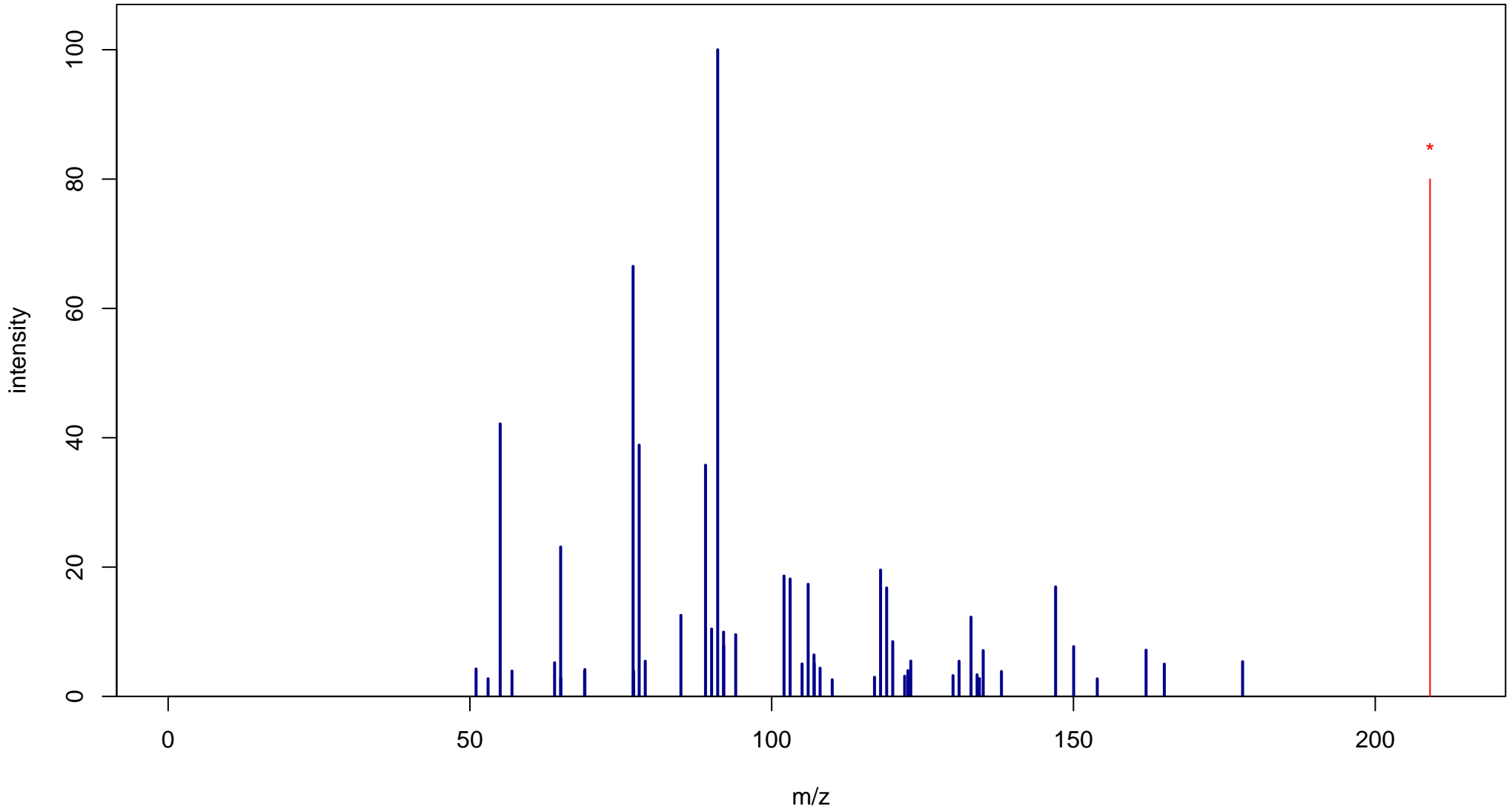
Sinapyl aldehyde

Mass: 208.0736 Formula: C₁₁H₁₂O₄

mode: + collisionE: 40V

METLIN ID: 44806 SIGMA Prod: 382159

http://metlin.scripps.edu/metabo_info.php?molid=44806



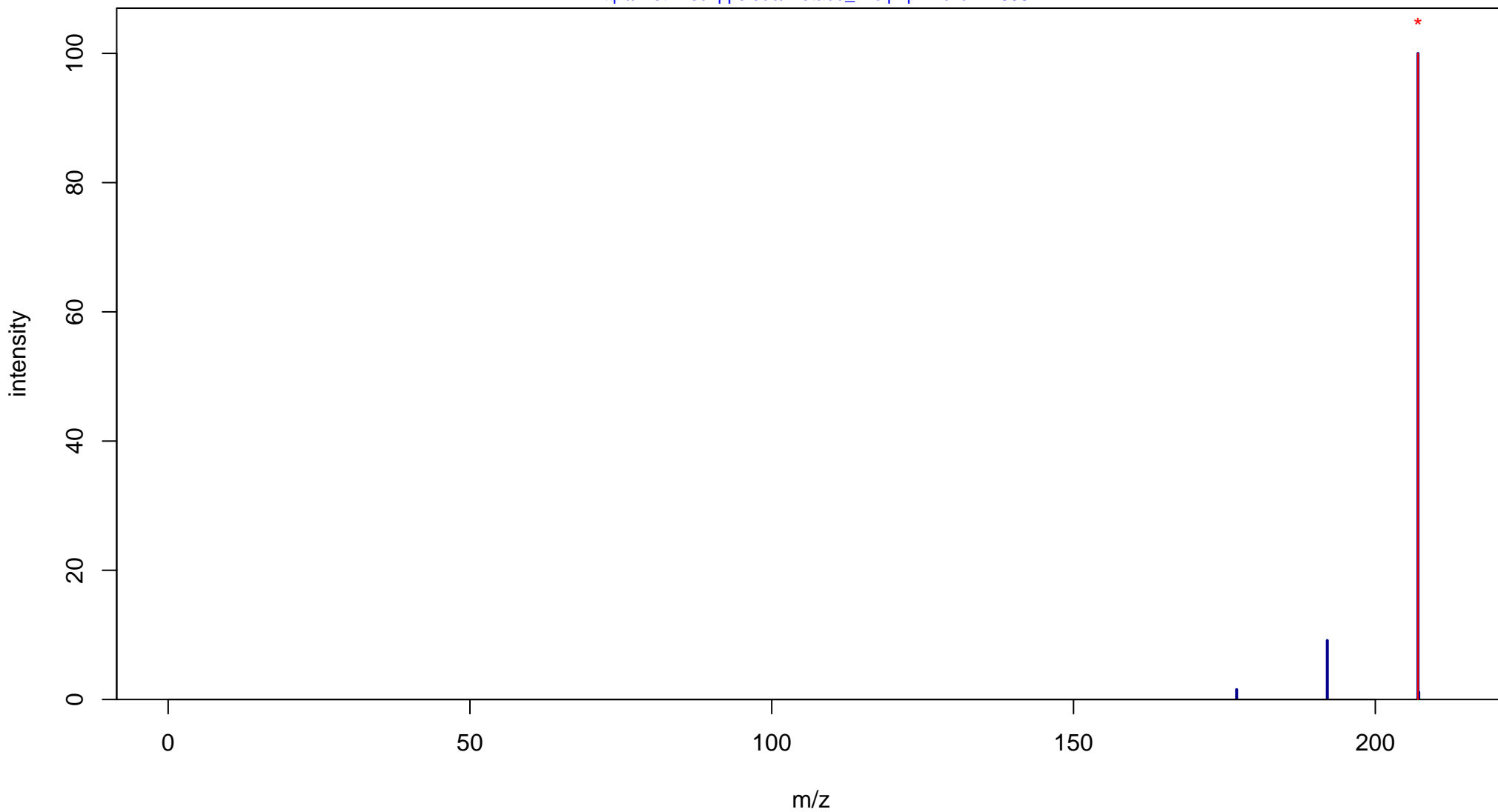
Sinapyl aldehyde

Mass: 208.0736 Formula: C₁₁H₁₂O₄

mode: - collisionE: 0V

METLIN ID: 44806 SIGMA Prod: 382159

http://metlin.scripps.edu/metabo_info.php?molid=44806



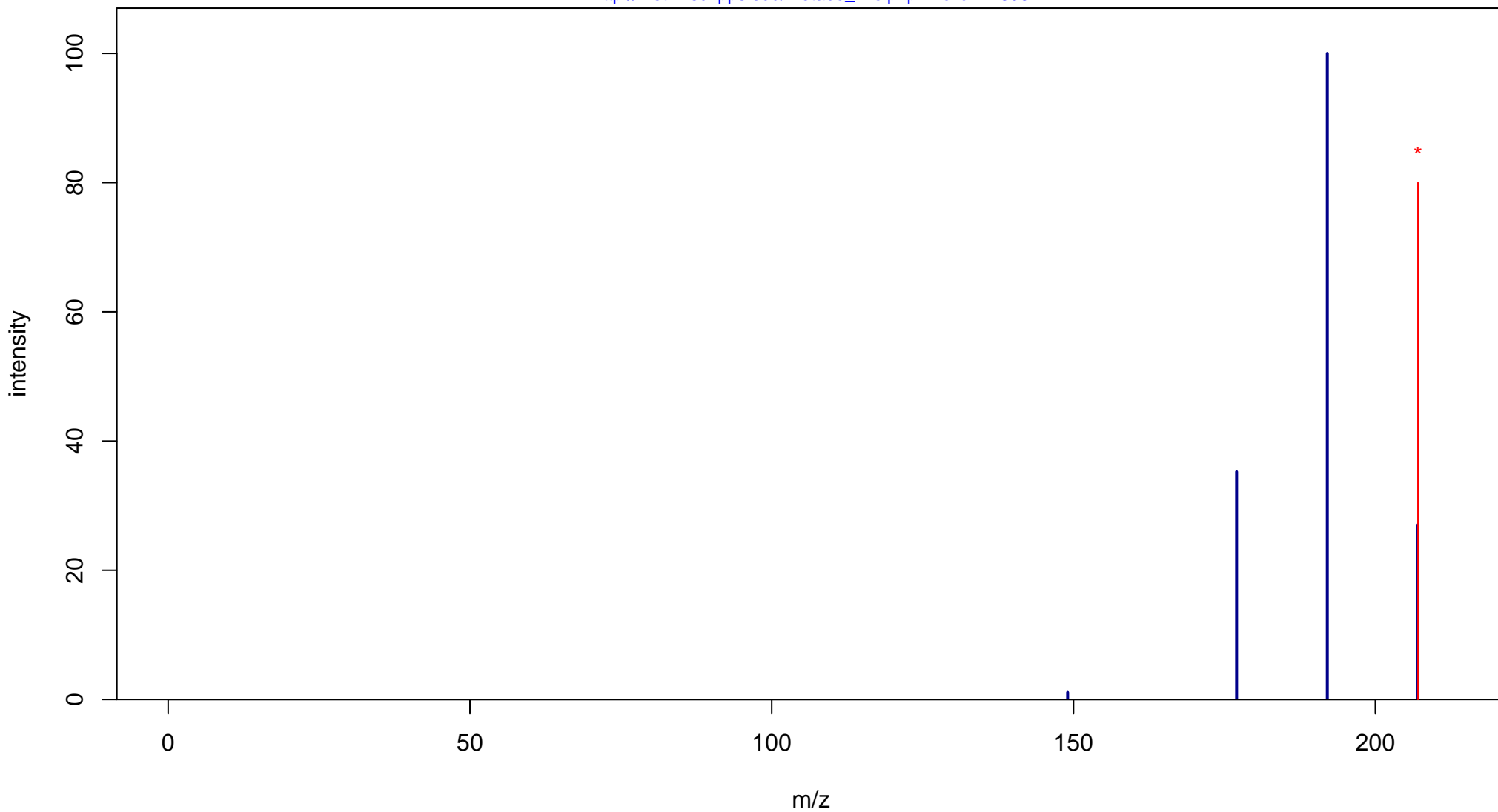
Sinapyl aldehyde

Mass: 208.0736 Formula: C₁₁H₁₂O₄

mode: - collisionE: 10V

METLIN ID: 44806 SIGMA Prod: 382159

http://metlin.scripps.edu/metabo_info.php?molid=44806



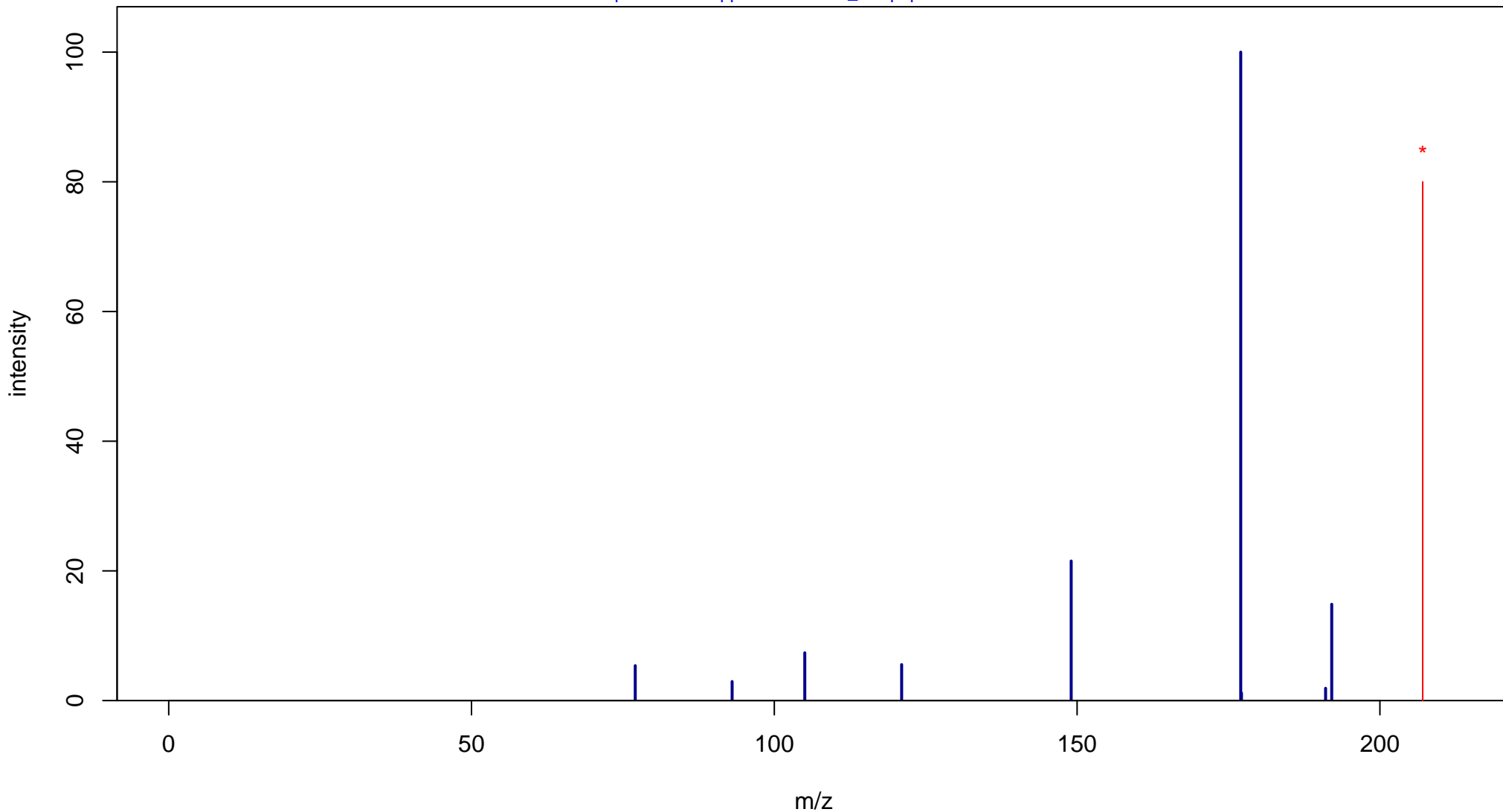
Sinapyl aldehyde

Mass: 208.0736 Formula: C₁₁H₁₂O₄

mode: - collisionE: 20V

METLIN ID: 44806 SIGMA Prod: 382159

http://metlin.scripps.edu/metabo_info.php?molid=44806



Sinapyl aldehyde

Mass: 208.0736 Formula: C₁₁H₁₂O₄

mode: - collisionE: 40V

METLIN ID: 44806 SIGMA Prod: 382159

http://metlin.scripps.edu/metabo_info.php?molid=44806

