

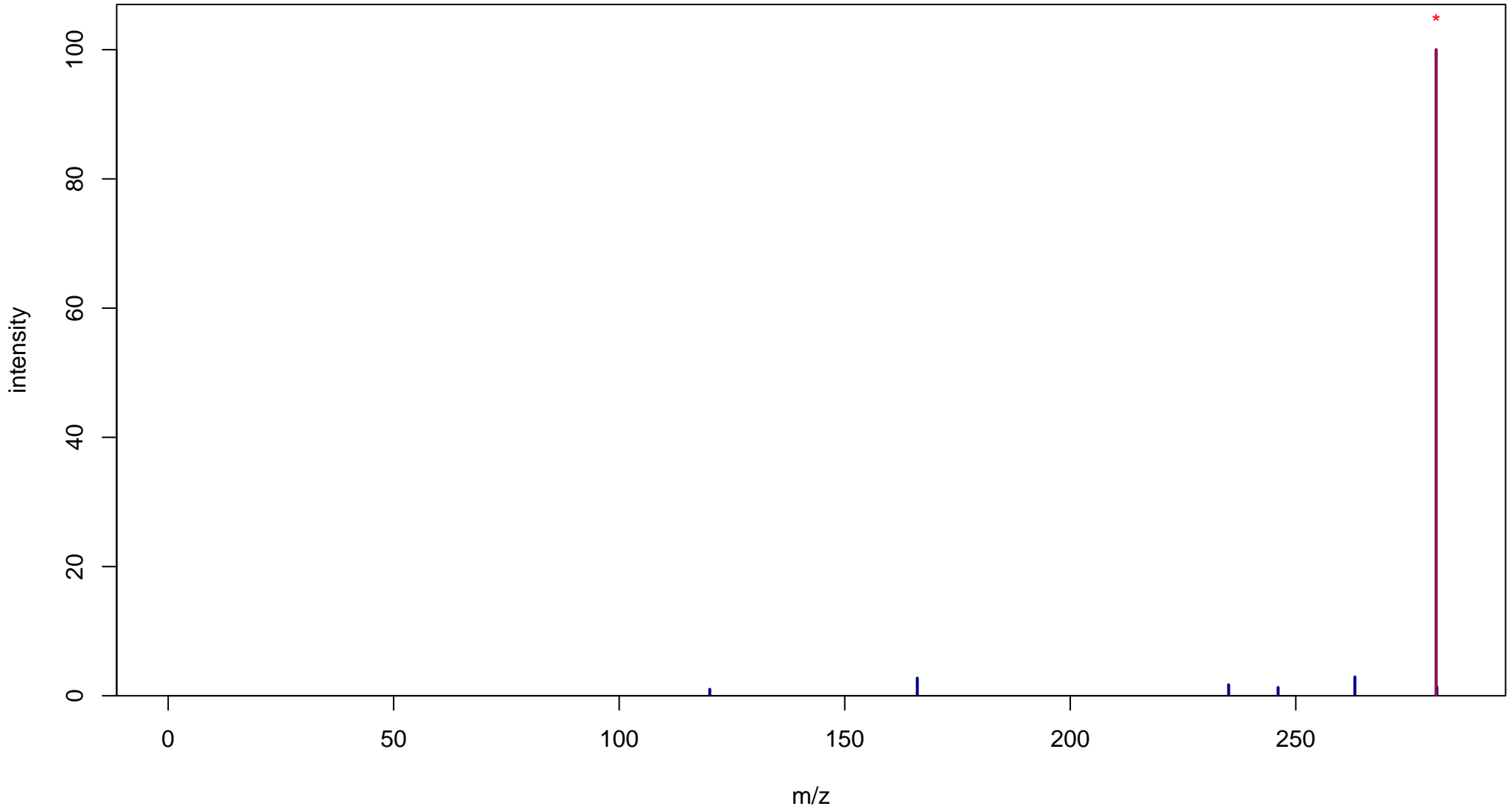
Asp-Phe

Mass: 280.1059 Formula: C₁₃H₁₆N₂O₅

mode: + collisionE: 0V

METLIN ID: 64957 SIGMA Prod: 421669

http://metlin.scripps.edu/metabo_info.php?molid=64957



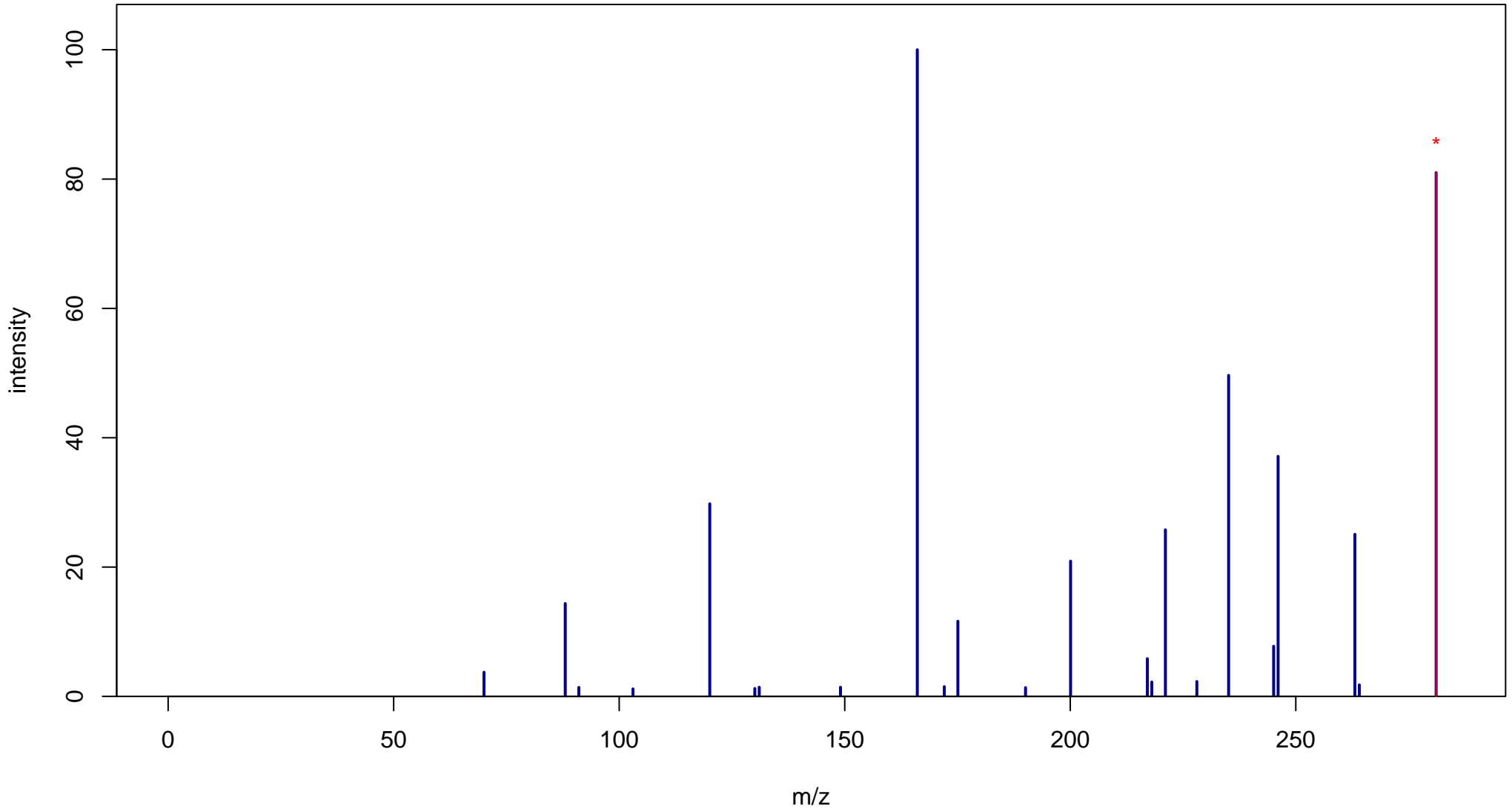
Asp-Phe

Mass: 280.1059 Formula: C₁₃H₁₆N₂O₅

mode: + collisionE: 10V

METLIN ID: 64957 SIGMA Prod: 421669

http://metlin.scripps.edu/metabo_info.php?molid=64957



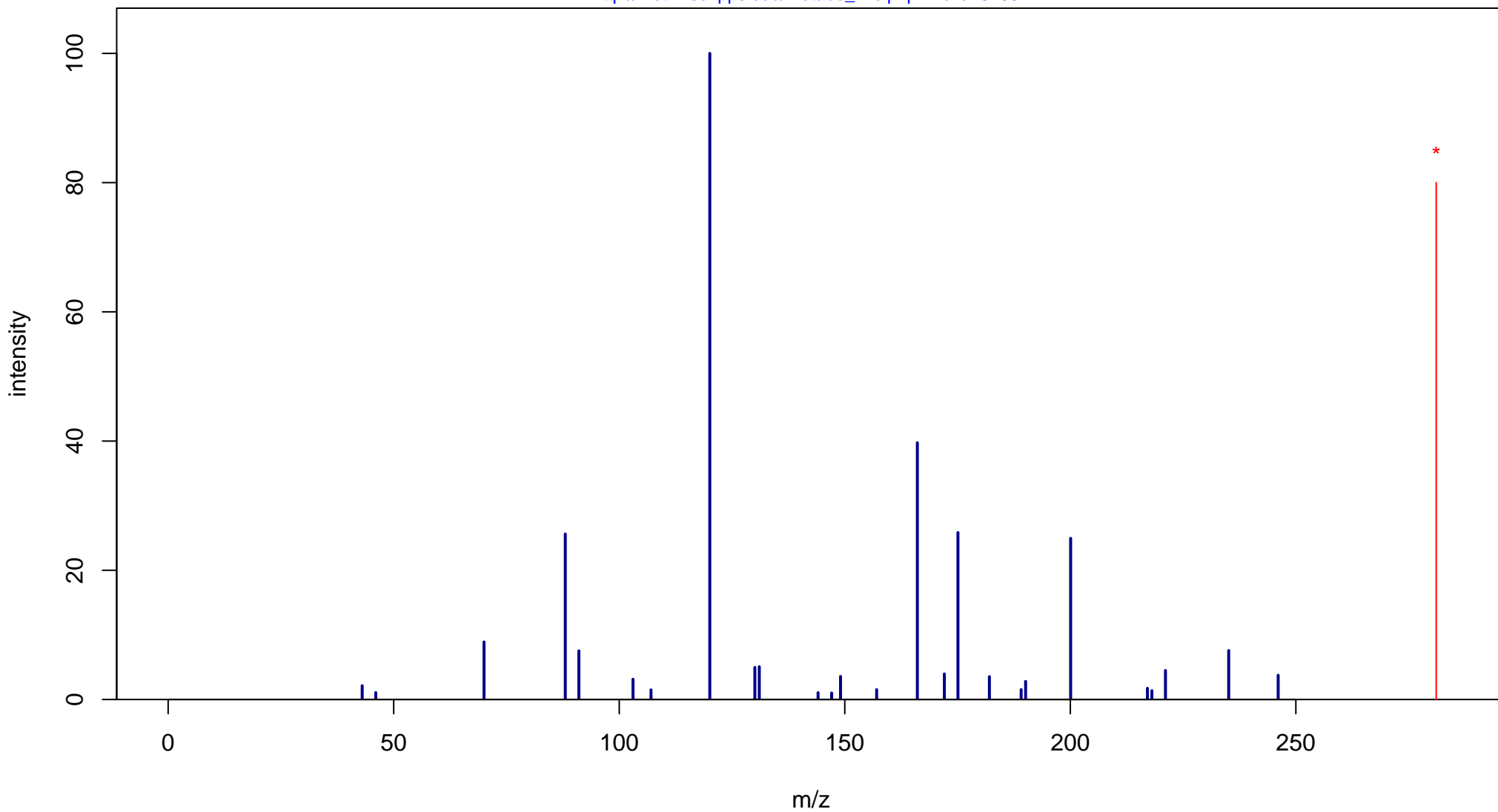
Asp-Phe

Mass: 280.1059 Formula: C₁₃H₁₆N₂O₅

mode: + collisionE: 20V

METLIN ID: 64957 SIGMA Prod: 421669

http://metlin.scripps.edu/metabo_info.php?molid=64957



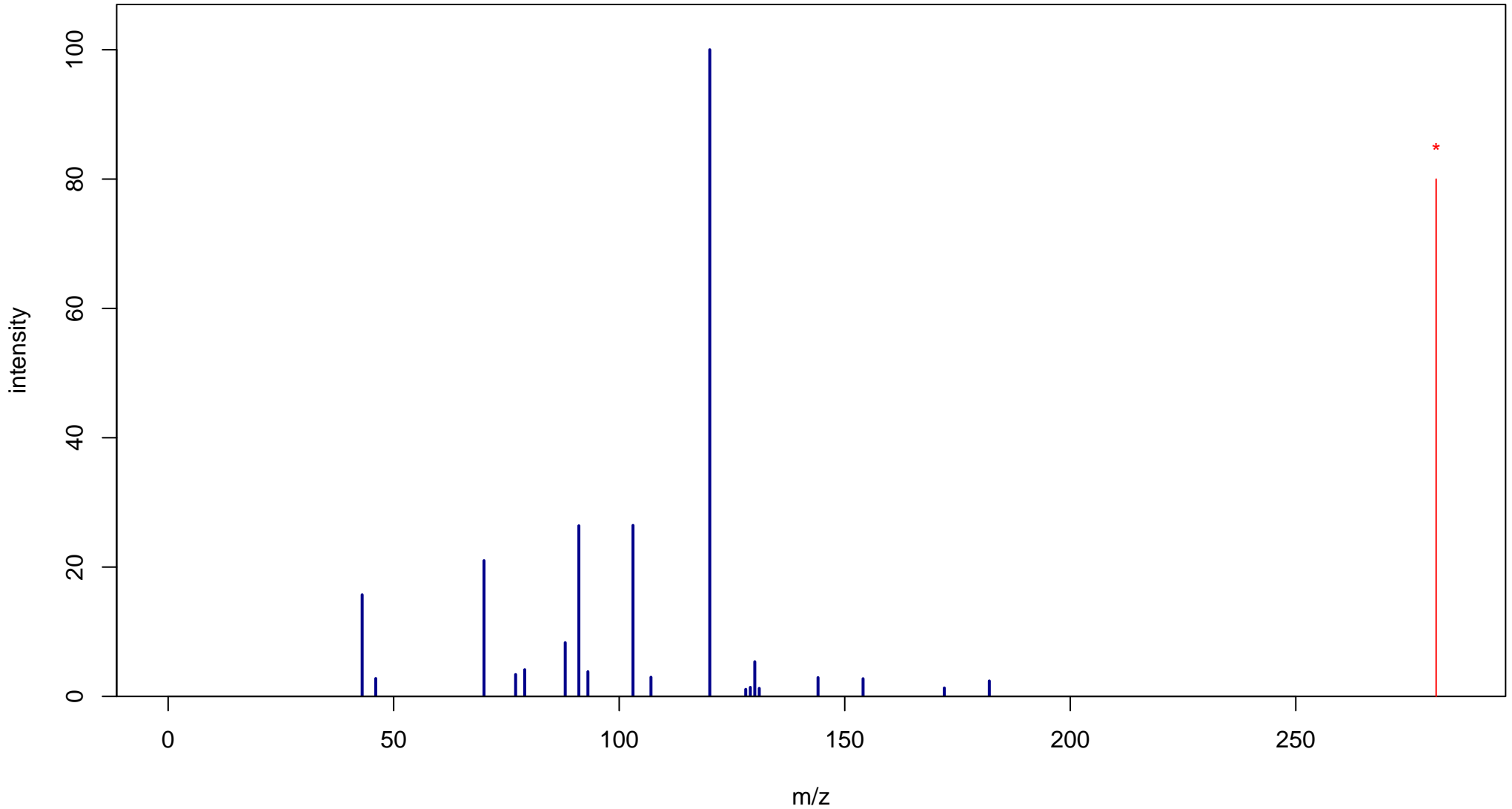
Asp-Phe

Mass: 280.1059 Formula: C₁₃H₁₆N₂O₅

mode: + collisionE: 40V

METLIN ID: 64957 SIGMA Prod: 421669

http://metlin.scripps.edu/metabo_info.php?molid=64957



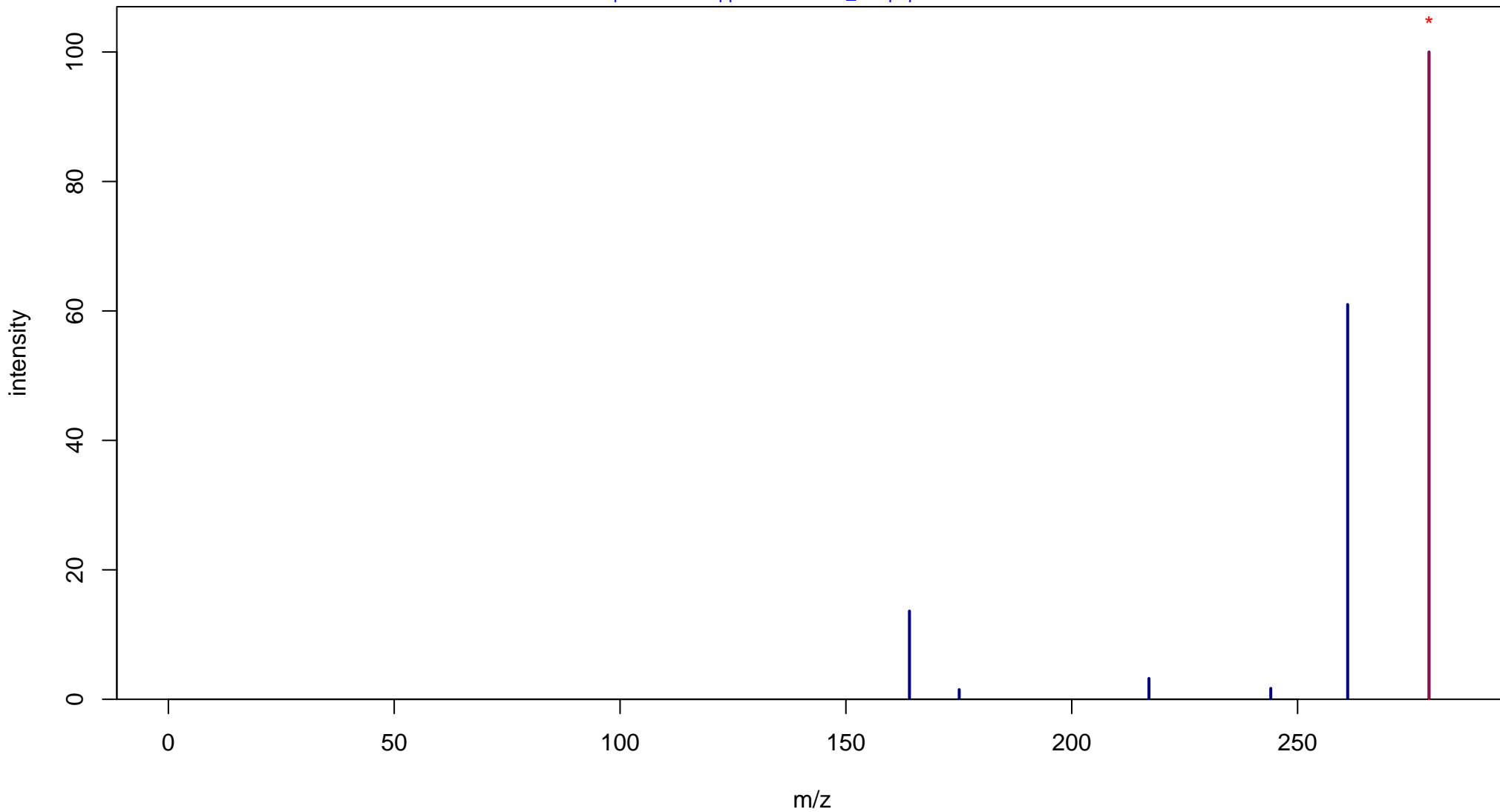
Asp-Phe

Mass: 280.1059 Formula: C₁₃H₁₆N₂O₅

mode: - collisionE: 0V

METLIN ID: 64957 SIGMA Prod: 421669

http://metlin.scripps.edu/metabo_info.php?molid=64957



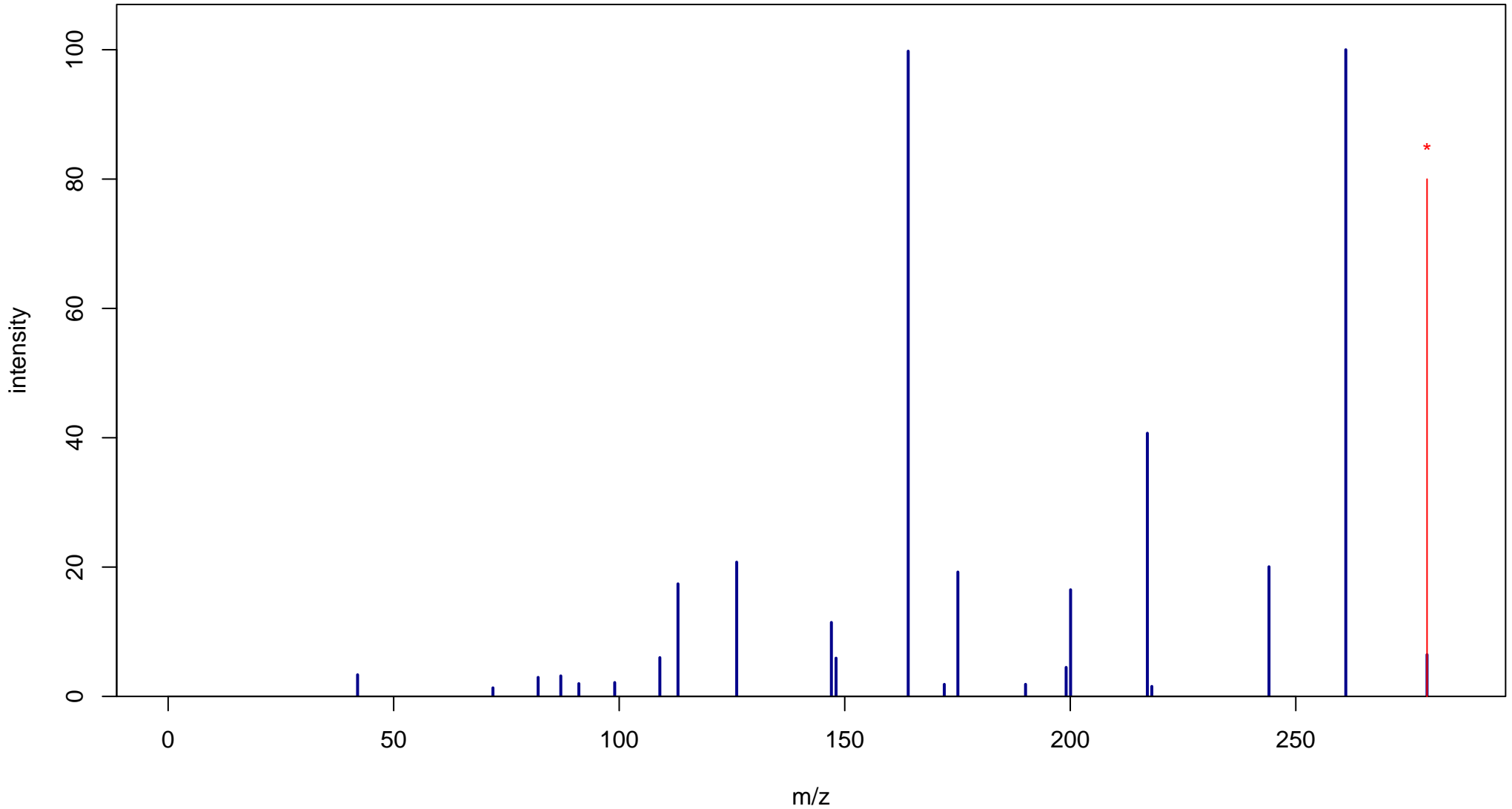
Asp-Phe

Mass: 280.1059 Formula: C₁₃H₁₆N₂O₅

mode: - collisionE: 10V

METLIN ID: 64957 SIGMA Prod: 421669

http://metlin.scripps.edu/metabo_info.php?molid=64957



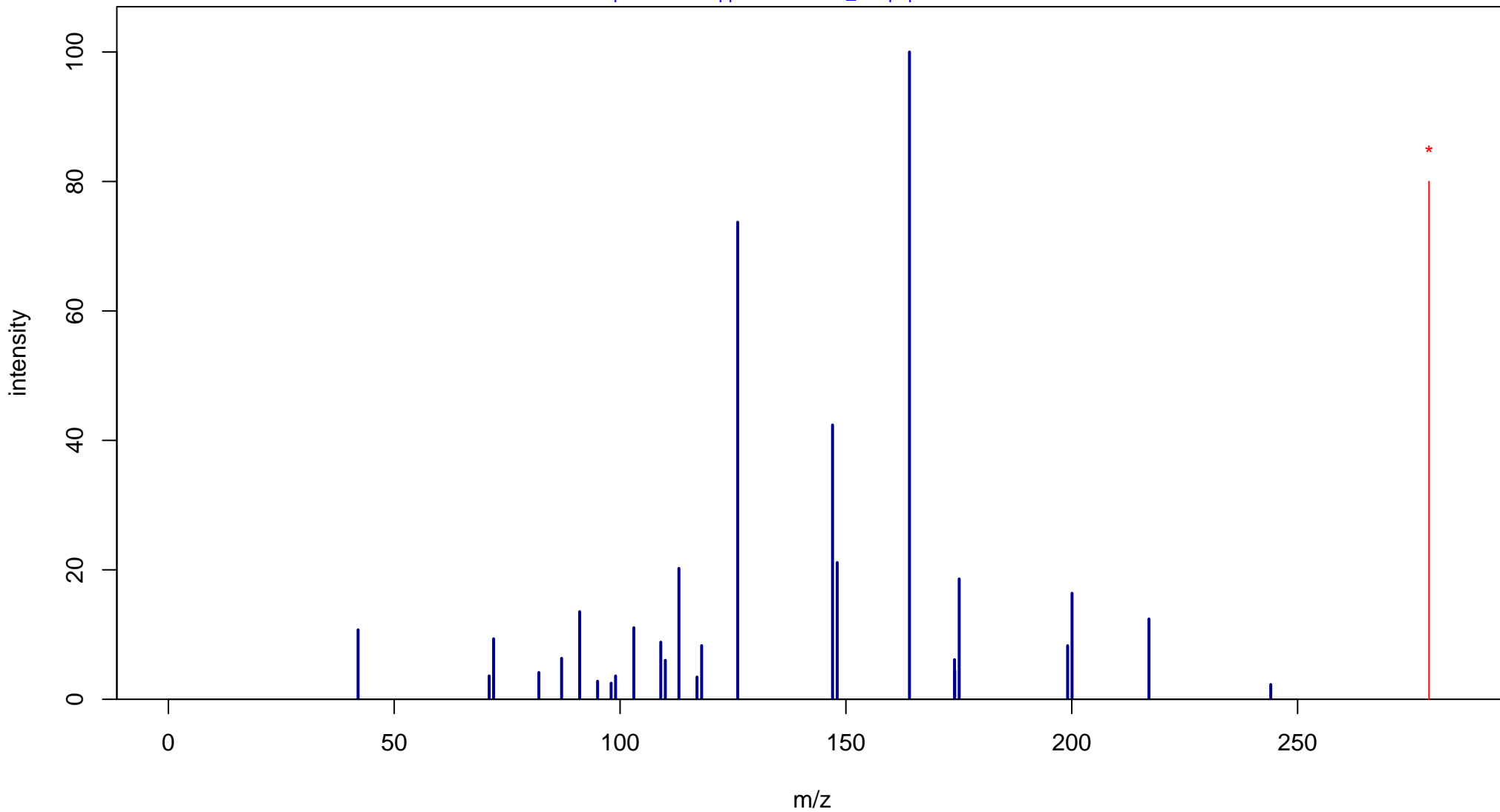
Asp-Phe

Mass: 280.1059 Formula: C₁₃H₁₆N₂O₅

mode: - collisionE: 20V

METLIN ID: 64957 SIGMA Prod: 421669

http://metlin.scripps.edu/metabo_info.php?molid=64957



Asp-Phe

Mass: 280.1059 Formula: C₁₃H₁₆N₂O₅

mode: - collisionE: 40V

METLIN ID: 64957 SIGMA Prod: 421669

http://metlin.scripps.edu/metabo_info.php?molid=64957

