

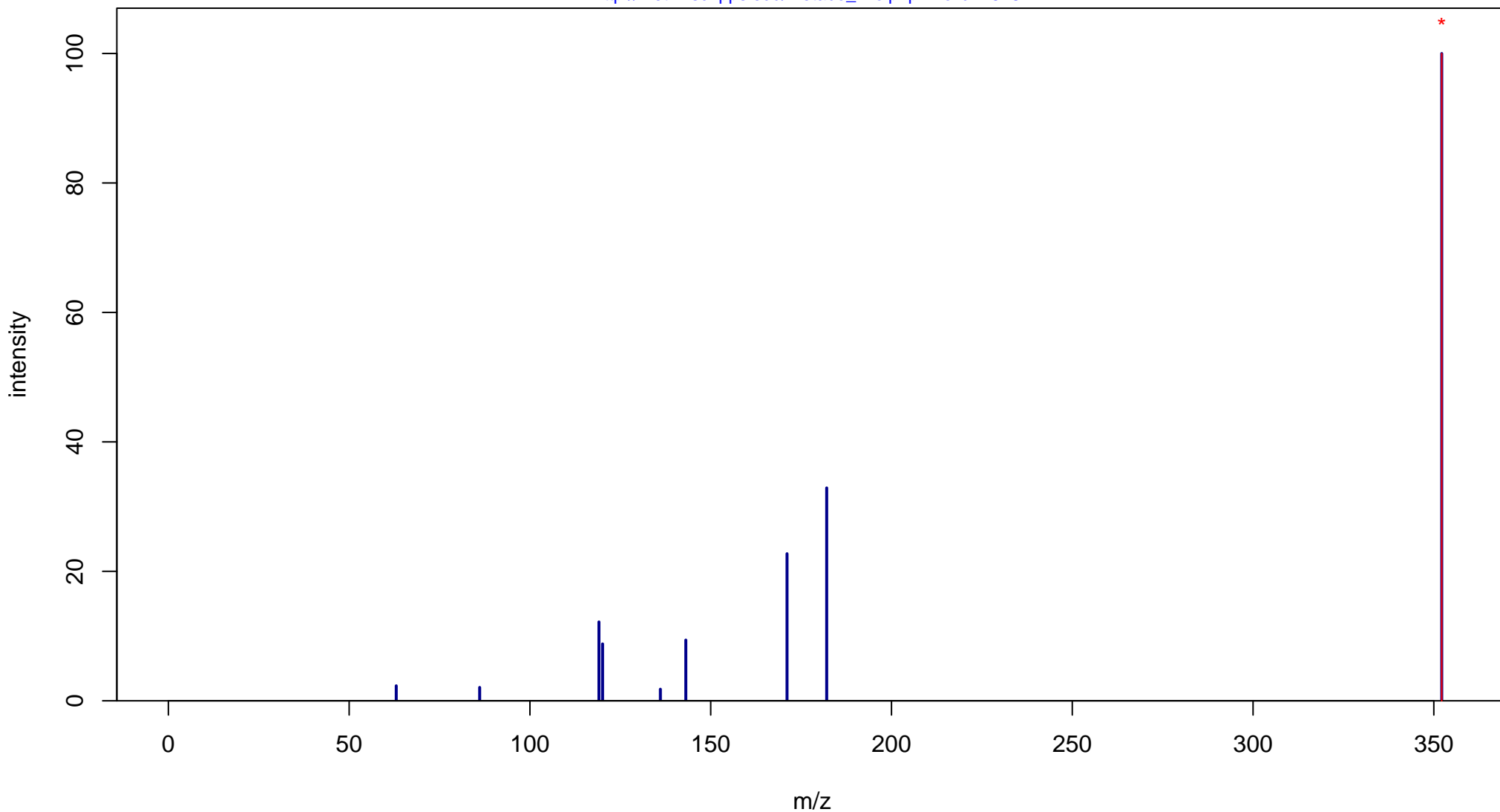
Gly-Leu-Tyr

Mass: 351.1794 Formula: C₁₇H₂₅N₃O₅

mode: + collisionE: 0V

METLIN ID: 15784 SIGMA Prod: 50340

http://metlin.scripps.edu/metabo_info.php?molid=15784



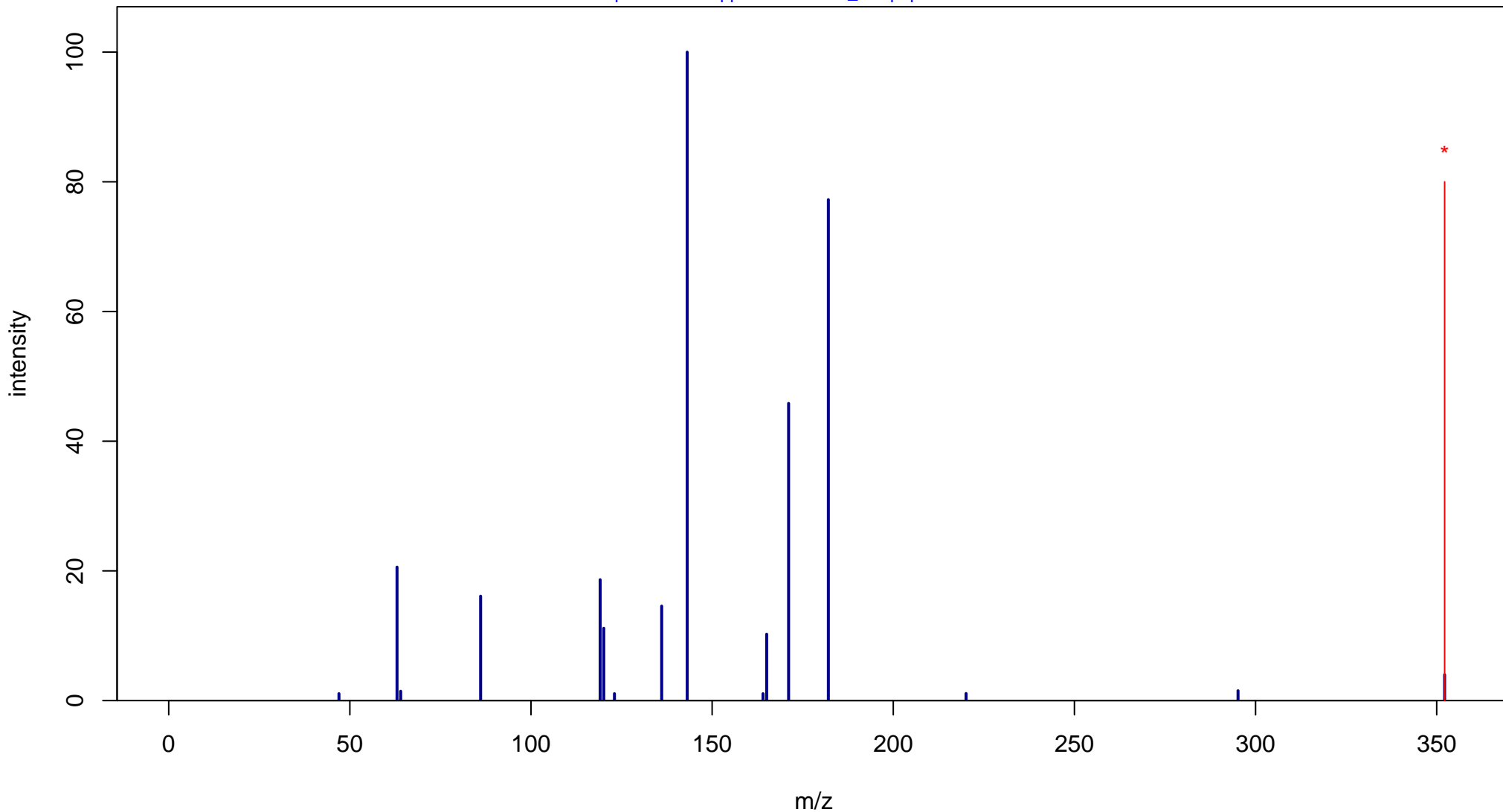
Gly-Leu-Tyr

Mass: 351.1794 Formula: C₁₇H₂₅N₃O₅

mode: + collisionE: 10V

METLIN ID: 15784 SIGMA Prod: 50340

http://metlin.scripps.edu/metabo_info.php?molid=15784



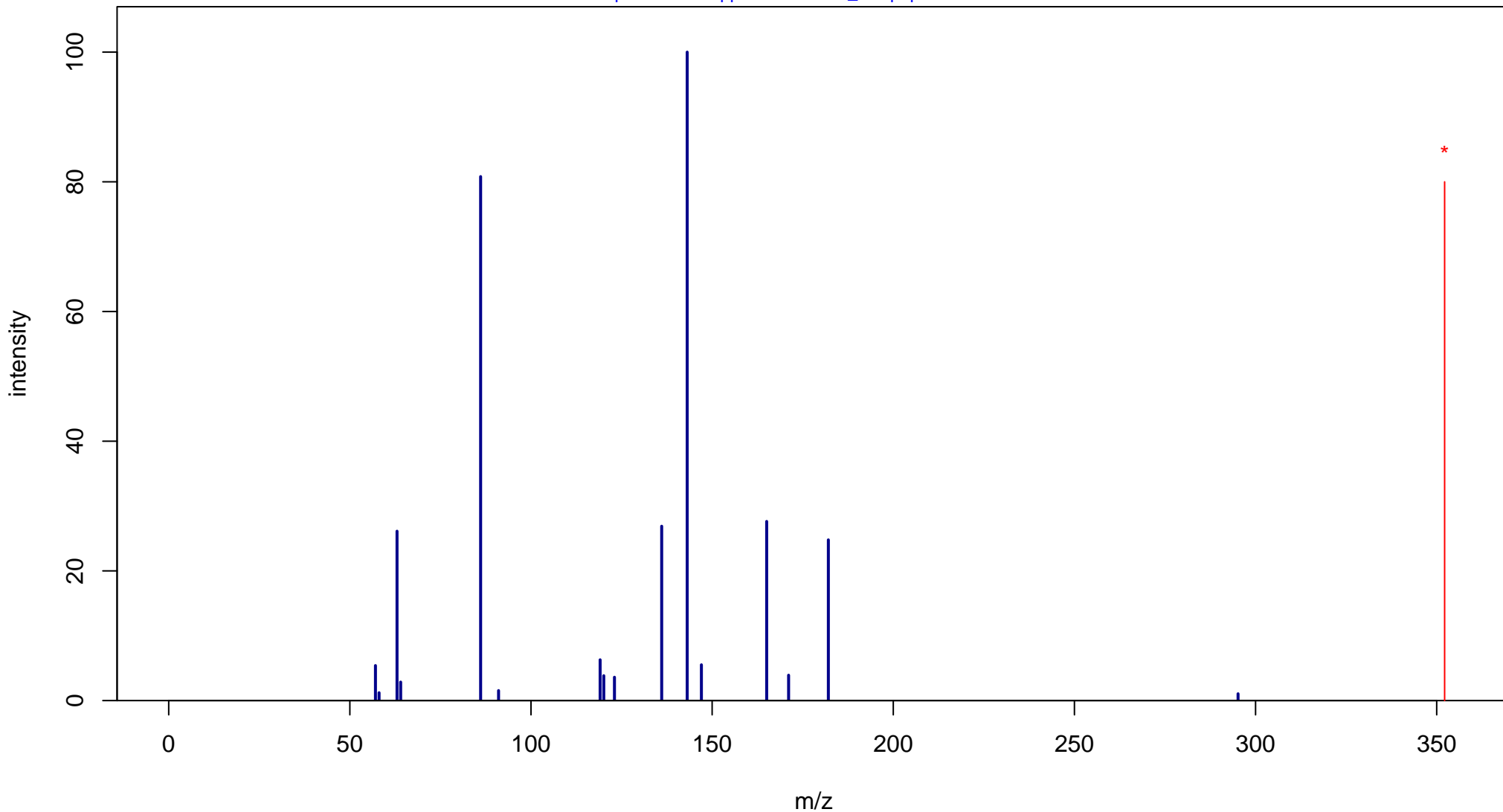
Gly-Leu-Tyr

Mass: 351.1794 Formula: C₁₇H₂₅N₃O₅

mode: + collisionE: 20V

METLIN ID: 15784 SIGMA Prod: 50340

http://metlin.scripps.edu/metabo_info.php?molid=15784



Gly-Leu-Tyr

Mass: 351.1794 Formula: C₁₇H₂₅N₃O₅

mode: + collisionE: 40V

METLIN ID: 15784 SIGMA Prod: 50340

http://metlin.scripps.edu/metabo_info.php?molid=15784

