

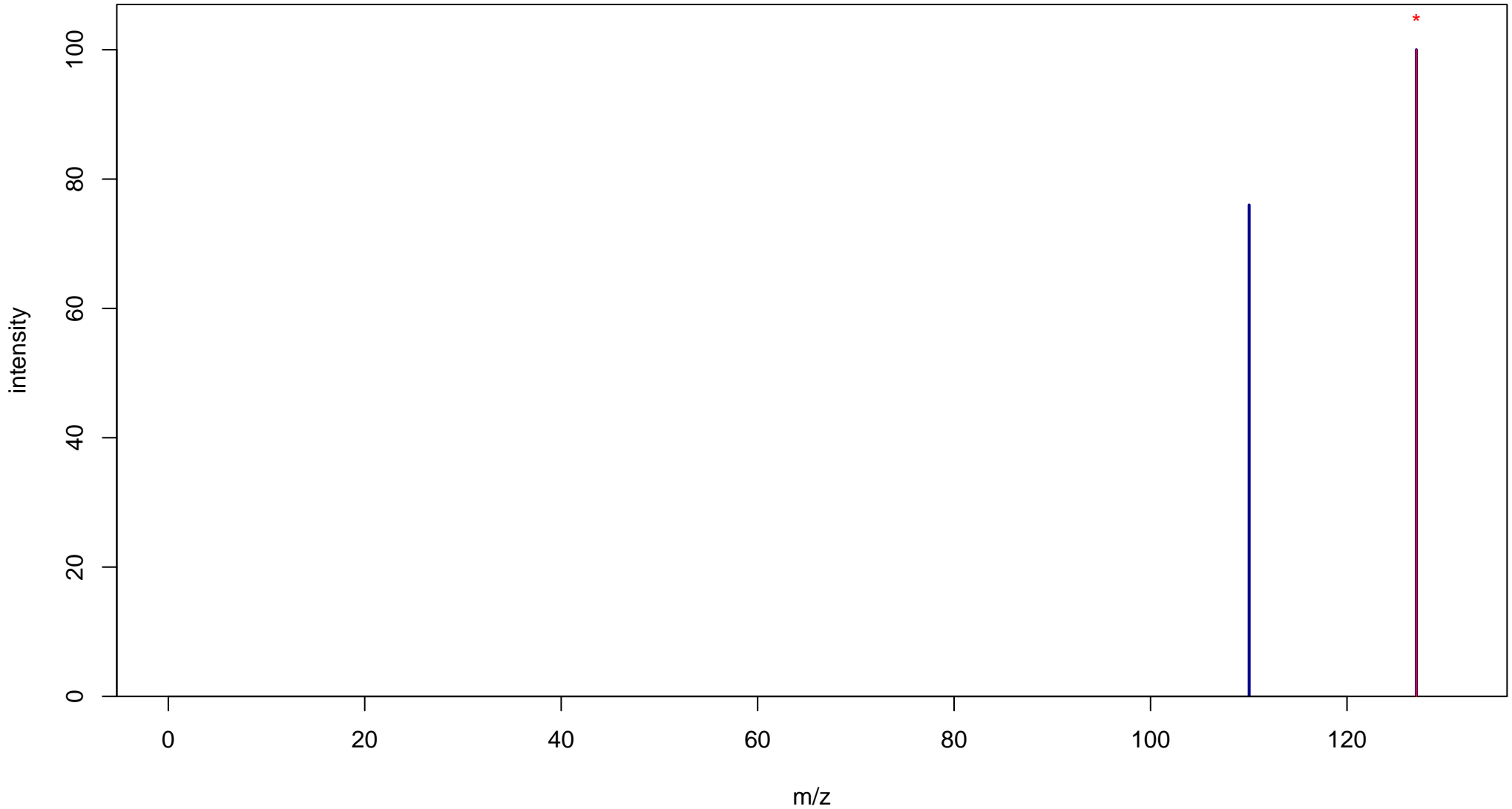
5-Amino-4-imidazolecarboxamide

Mass: 126.0542 Formula: C₄H₆N₄O

mode: + collisionE: 0V

METLIN ID: 629 SIGMA Prod: 552410

http://metlin.scripps.edu/metabo_info.php?molid=629



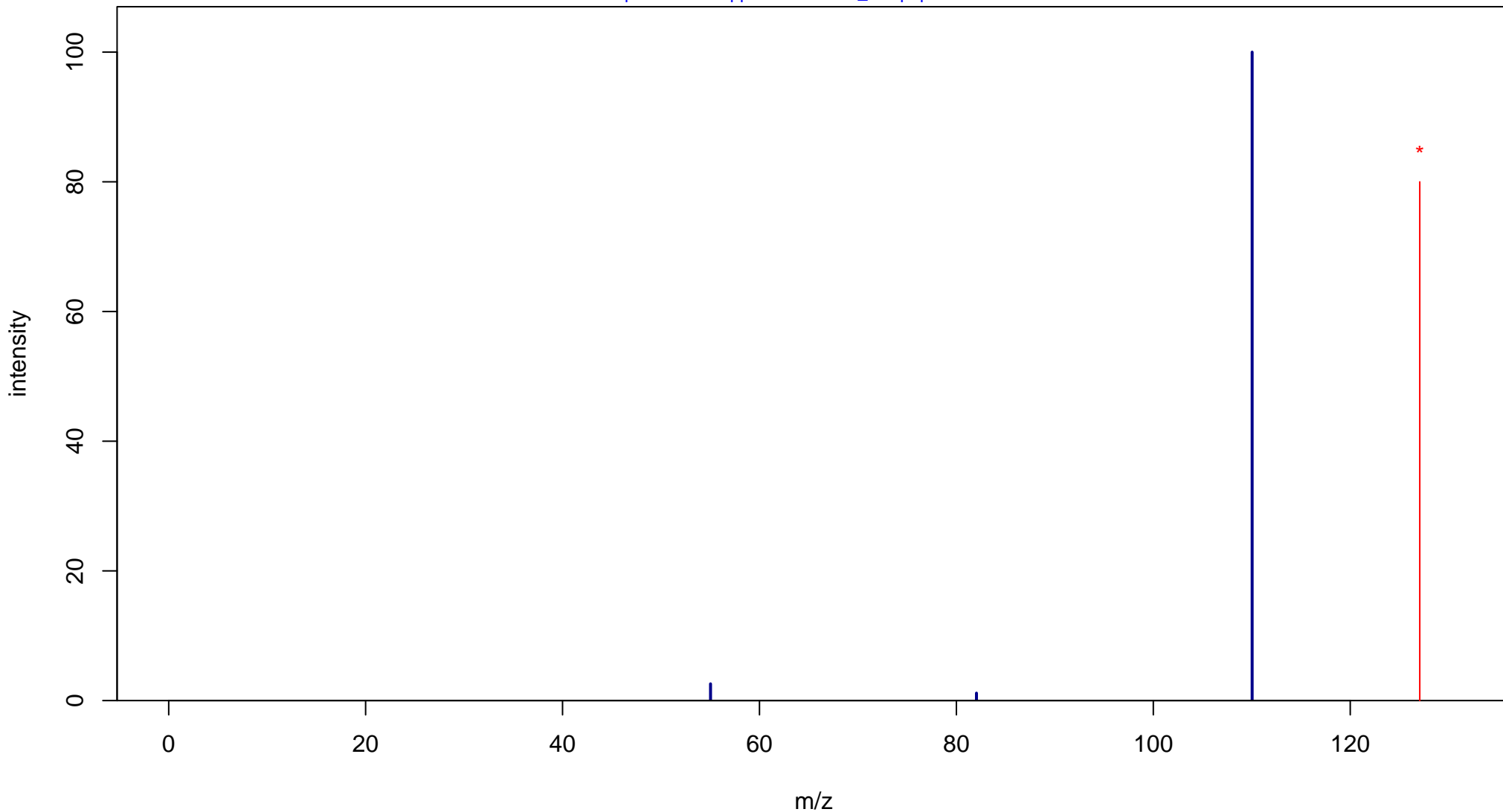
5-Amino-4-imidazolecarboxamide

Mass: 126.0542 Formula: C₄H₆N₄O

mode: + collisionE: 10V

METLIN ID: 629 SIGMA Prod: 552410

http://metlin.scripps.edu/metabo_info.php?molid=629



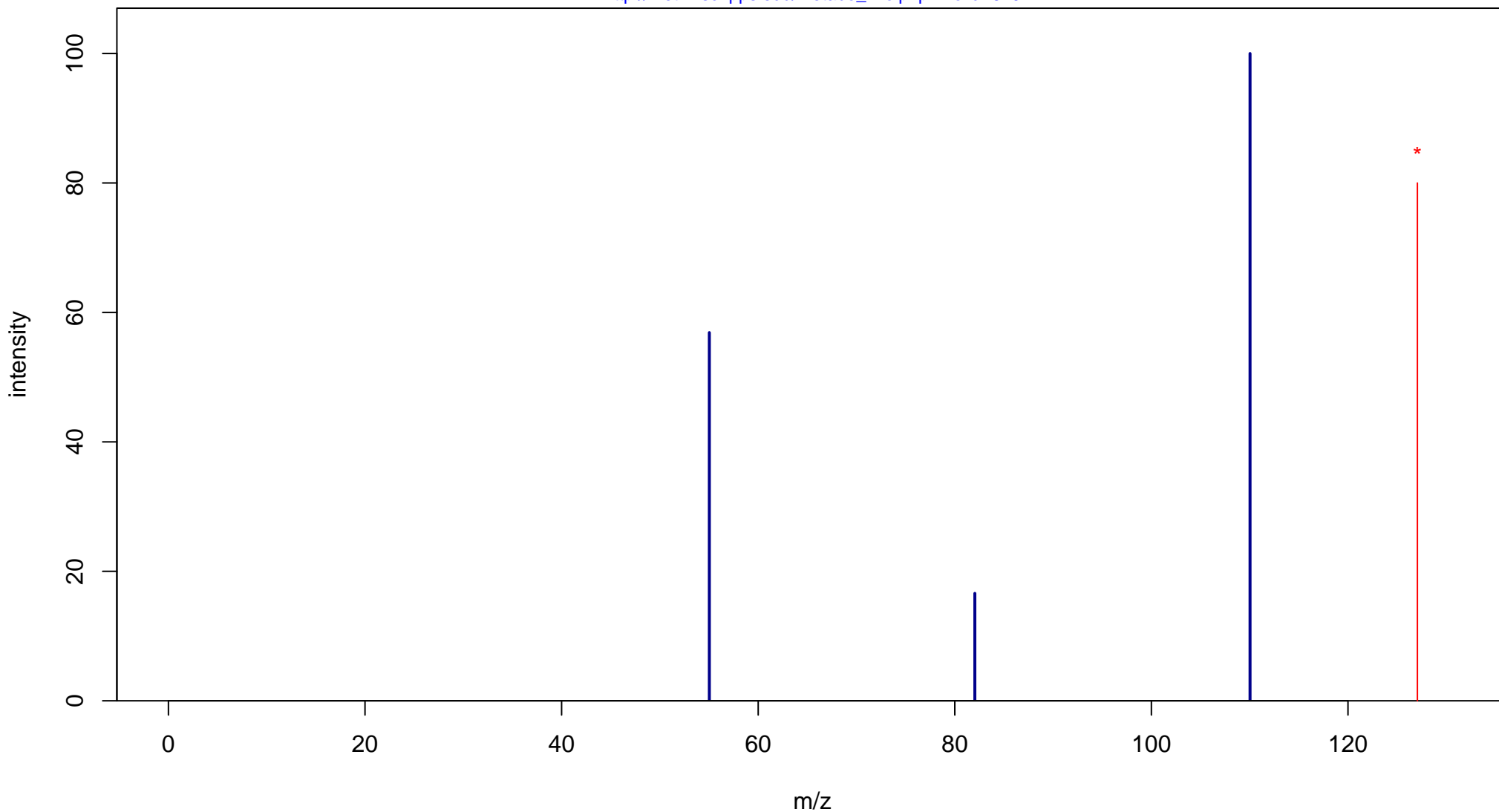
5-Amino-4-imidazolecarboxamide

Mass: 126.0542 Formula: C₄H₆N₄O

mode: + collisionE: 20V

METLIN ID: 629 SIGMA Prod: 552410

http://metlin.scripps.edu/metabo_info.php?molid=629



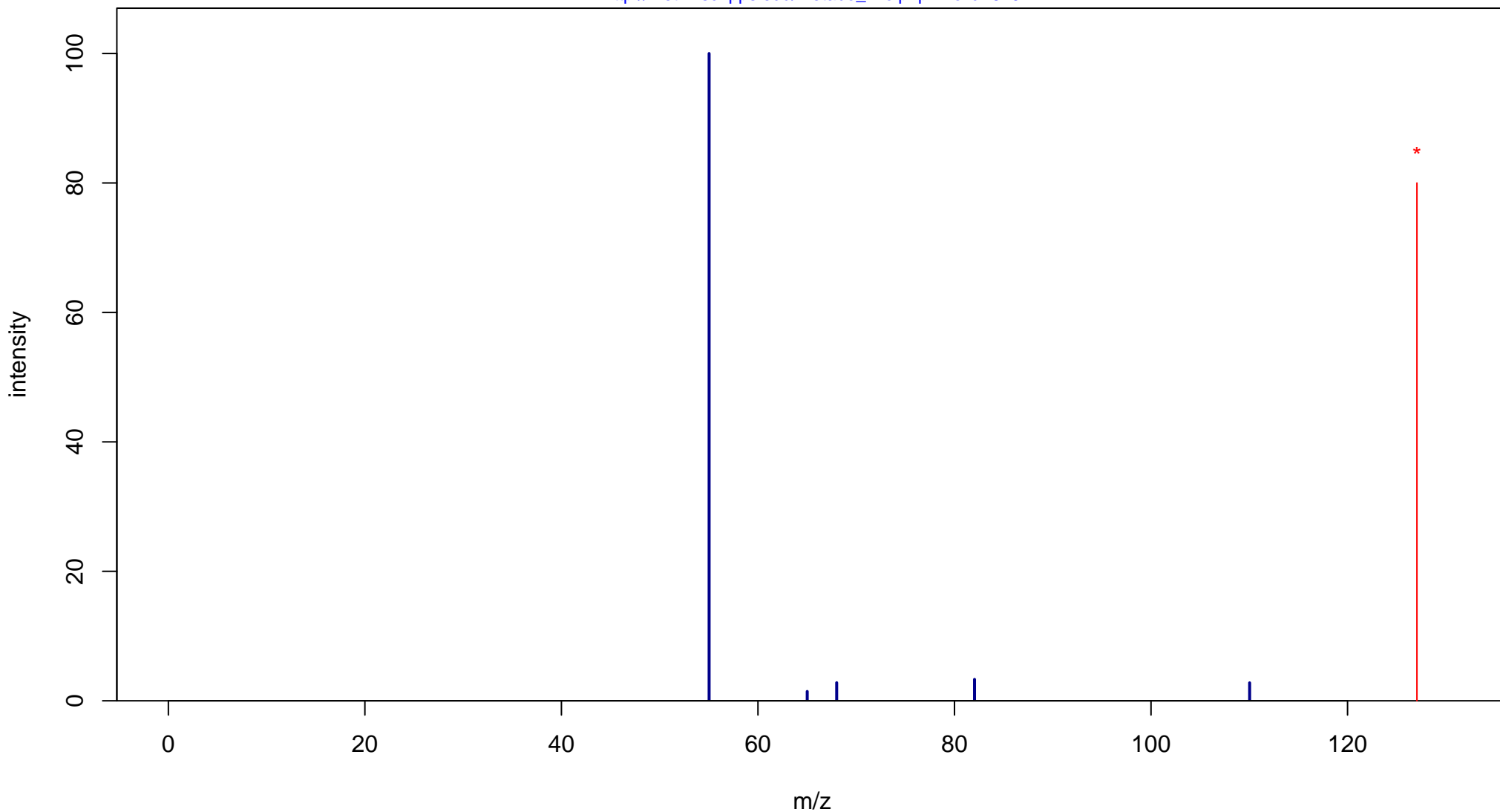
5-Amino-4-imidazolecarboxamide

Mass: 126.0542 Formula: C₄H₆N₄O

mode: + collisionE: 40V

METLIN ID: 629 SIGMA Prod: 552410

http://metlin.scripps.edu/metabo_info.php?molid=629



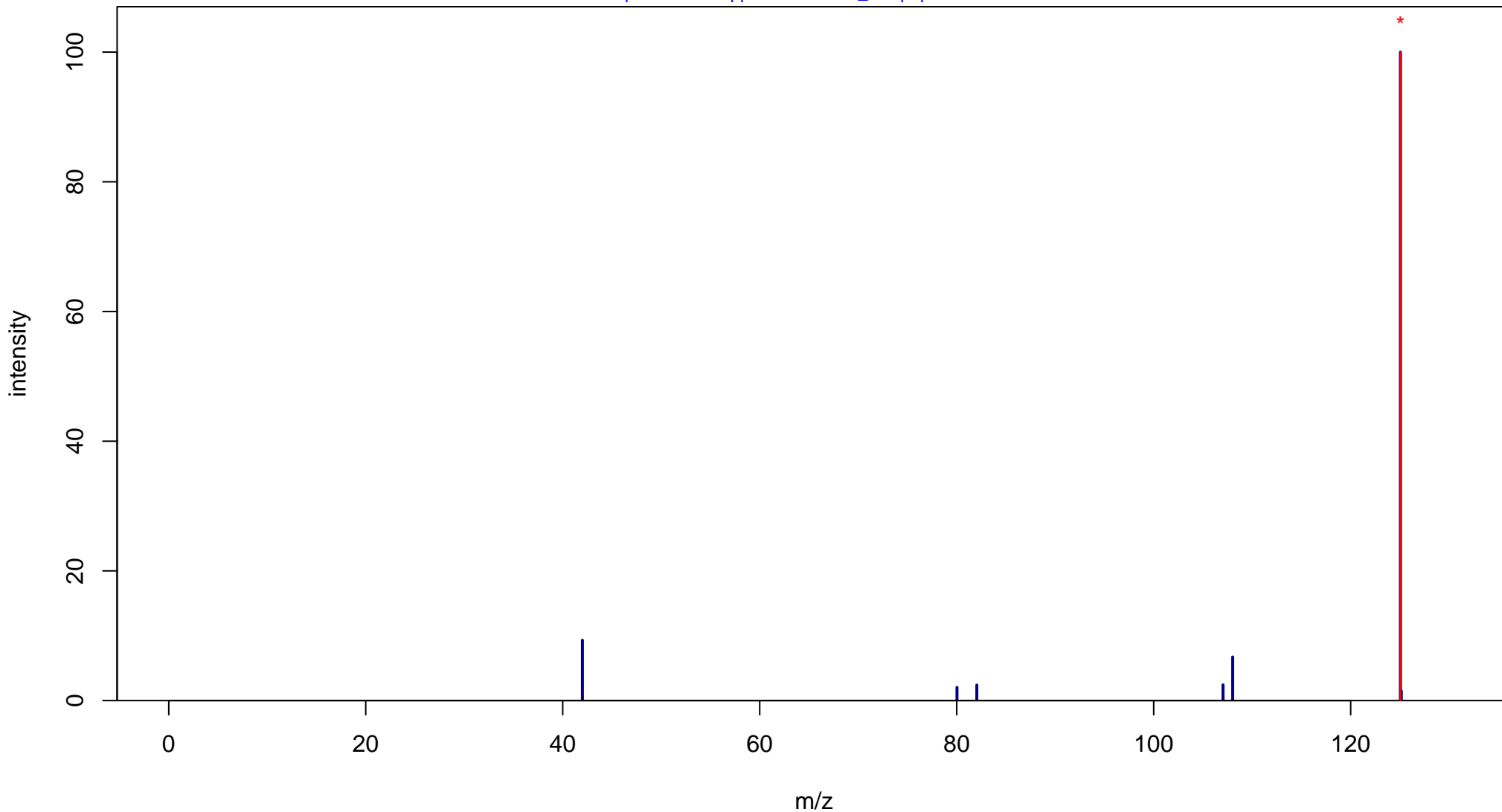
5-Amino-4-imidazolecarboxamide

Mass: 126.0542 Formula: C₄H₆N₄O

mode: - collisionE: 0V

METLIN ID: 629 SIGMA Prod: 552410

http://metlin.scripps.edu/metabo_info.php?molid=629



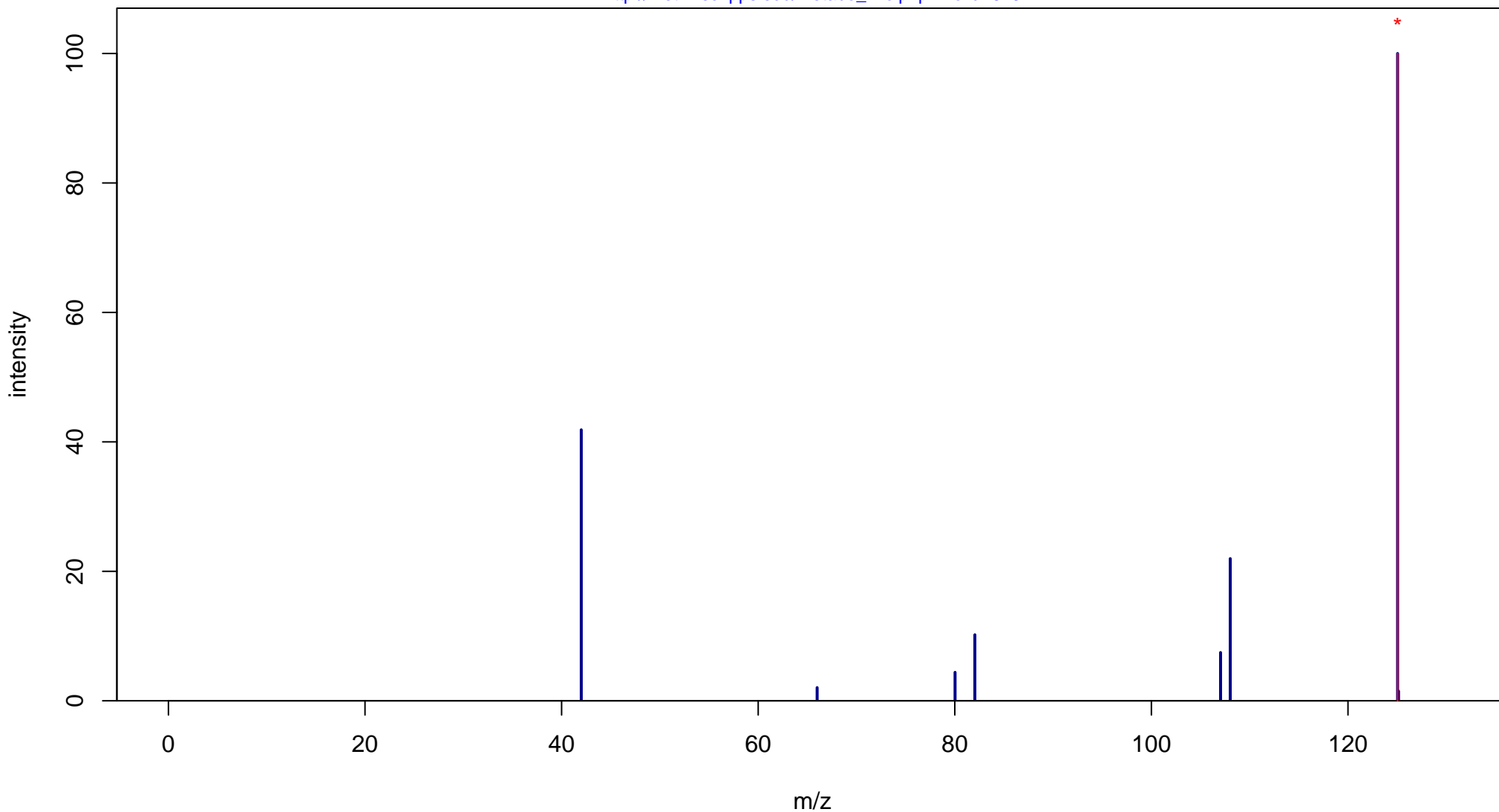
5-Amino-4-imidazolecarboxamide

Mass: 126.0542 Formula: C₄H₆N₄O

mode: - collisionE: 10V

METLIN ID: 629 SIGMA Prod: 552410

http://metlin.scripps.edu/metabo_info.php?molid=629



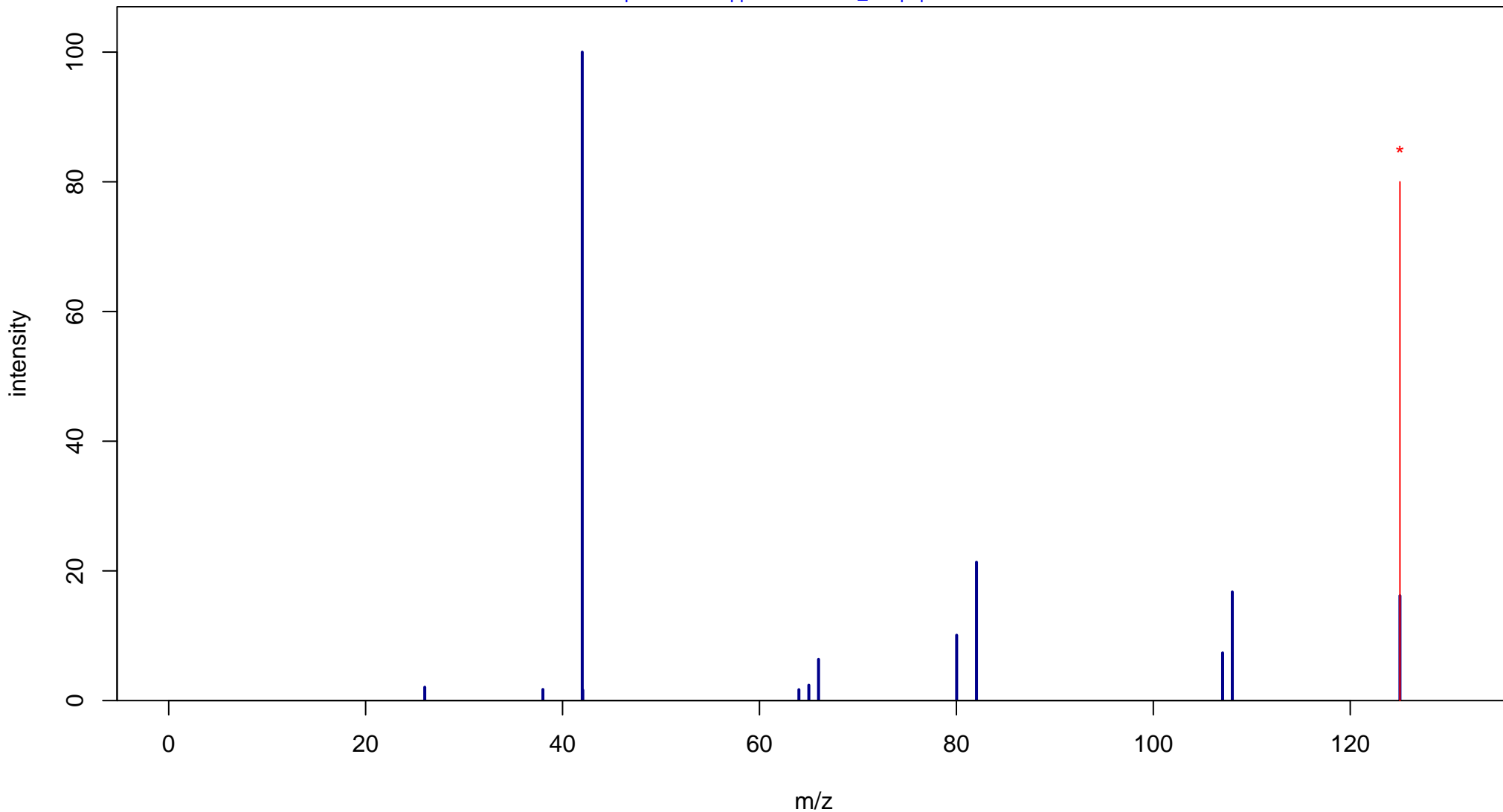
5-Amino-4-imidazolecarboxamide

Mass: 126.0542 Formula: C₄H₆N₄O

mode: - collisionE: 20V

METLIN ID: 629 SIGMA Prod: 552410

http://metlin.scripps.edu/metabo_info.php?molid=629



5-Amino-4-imidazolecarboxamide

Mass: 126.0542 Formula: C₄H₆N₄O

mode: - collisionE: 40V

METLIN ID: 629 SIGMA Prod: 552410

http://metlin.scripps.edu/metabo_info.php?molid=629

