

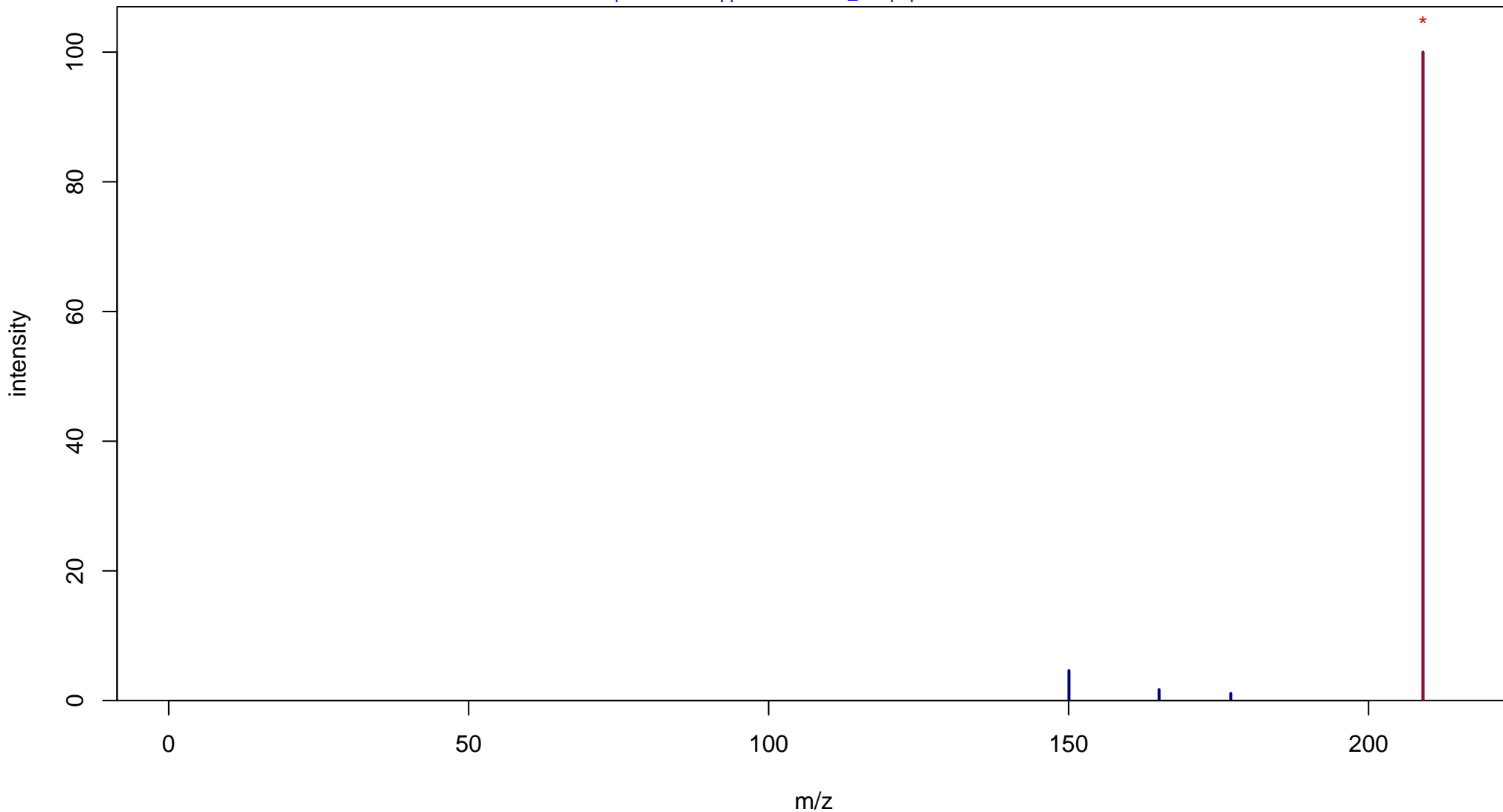
# 3-(2,5-Dimethoxyphenyl)propionic acid

Mass: 210.0892 Formula: C<sub>11</sub>H<sub>14</sub>O<sub>4</sub>

mode: - collisionE: 0V

METLIN ID: 24106 SIGMA Prod: 575658

[http://metlin.scripps.edu/metabo\\_info.php?molid=24106](http://metlin.scripps.edu/metabo_info.php?molid=24106)



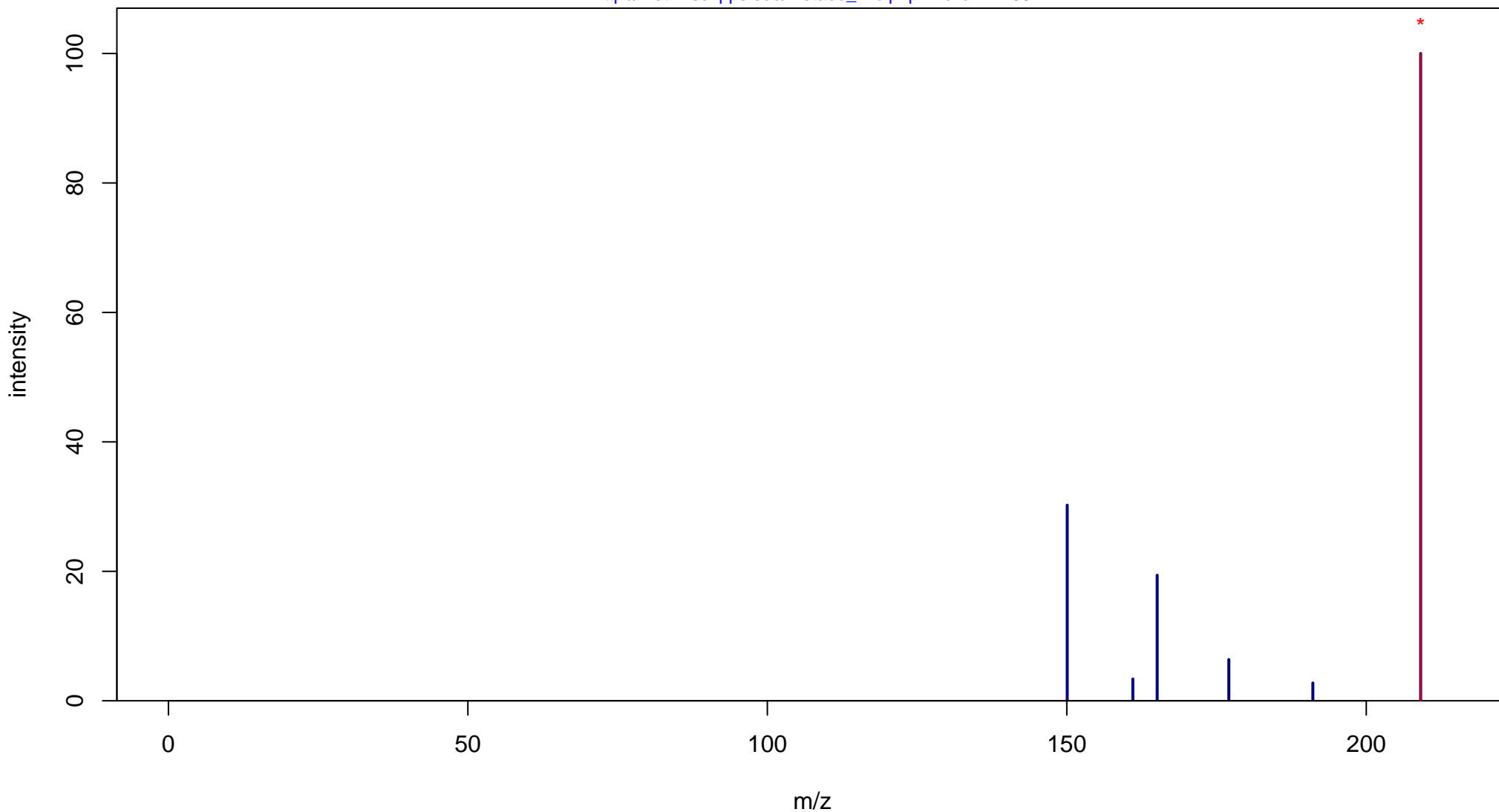
# 3-(2,5-Dimethoxyphenyl)propionic acid

Mass: 210.0892 Formula: C<sub>11</sub>H<sub>14</sub>O<sub>4</sub>

mode: - collisionE: 10V

METLIN ID: 24106 SIGMA Prod: 575658

[http://metlin.scripps.edu/metabo\\_info.php?molid=24106](http://metlin.scripps.edu/metabo_info.php?molid=24106)



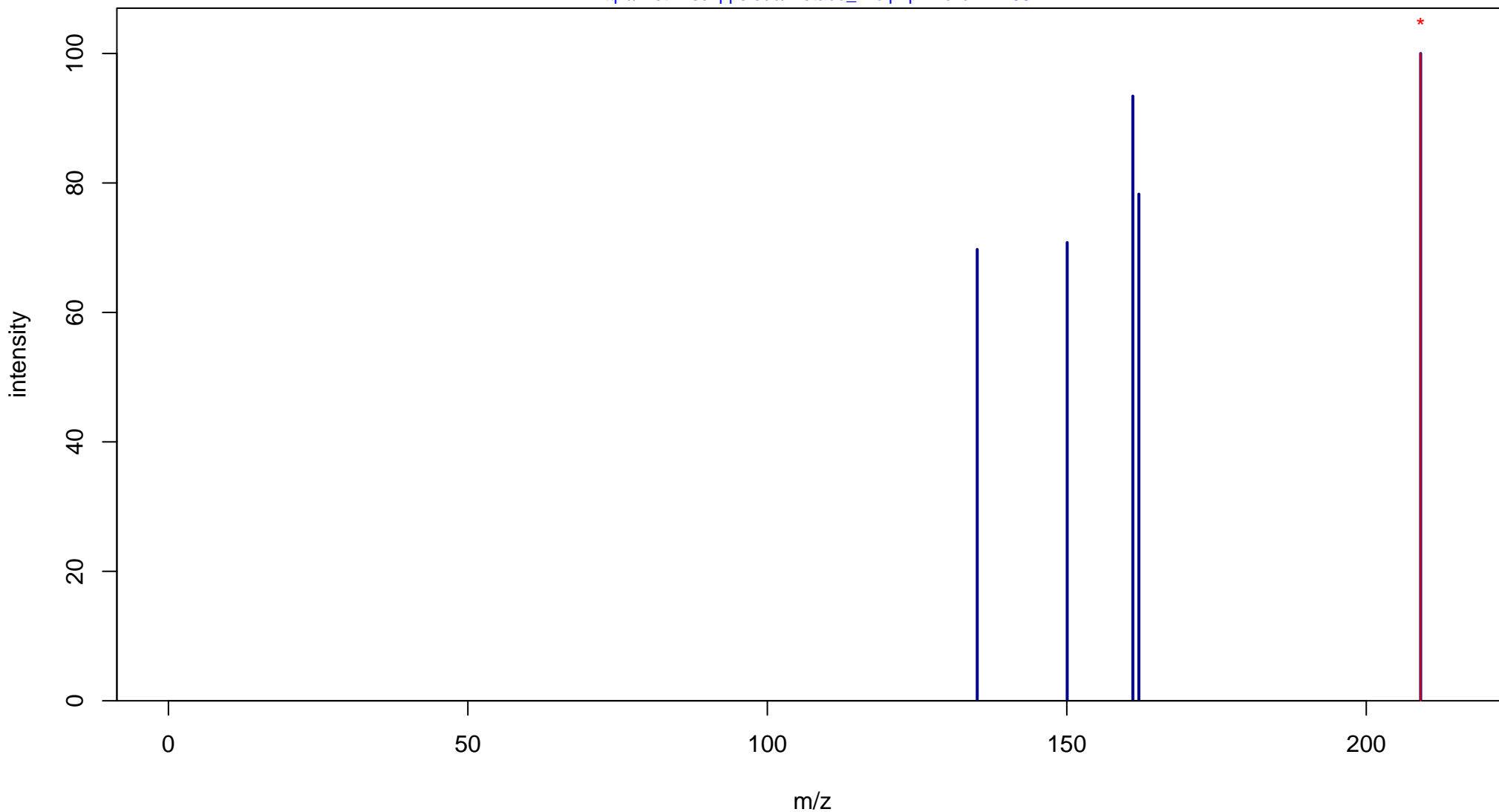
# 3-(2,5-Dimethoxyphenyl)propionic acid

Mass: 210.0892 Formula: C<sub>11</sub>H<sub>14</sub>O<sub>4</sub>

mode: - collisionE: 20V

METLIN ID: 24106 SIGMA Prod: 575658

[http://metlin.scripps.edu/metabo\\_info.php?molid=24106](http://metlin.scripps.edu/metabo_info.php?molid=24106)



# 3-(2,5-Dimethoxyphenyl)propionic acid

Mass: 210.0892 Formula: C<sub>11</sub>H<sub>14</sub>O<sub>4</sub>

mode: - collisionE: 40V

METLIN ID: 24106 SIGMA Prod: 575658

[http://metlin.scripps.edu/metabo\\_info.php?molid=24106](http://metlin.scripps.edu/metabo_info.php?molid=24106)

